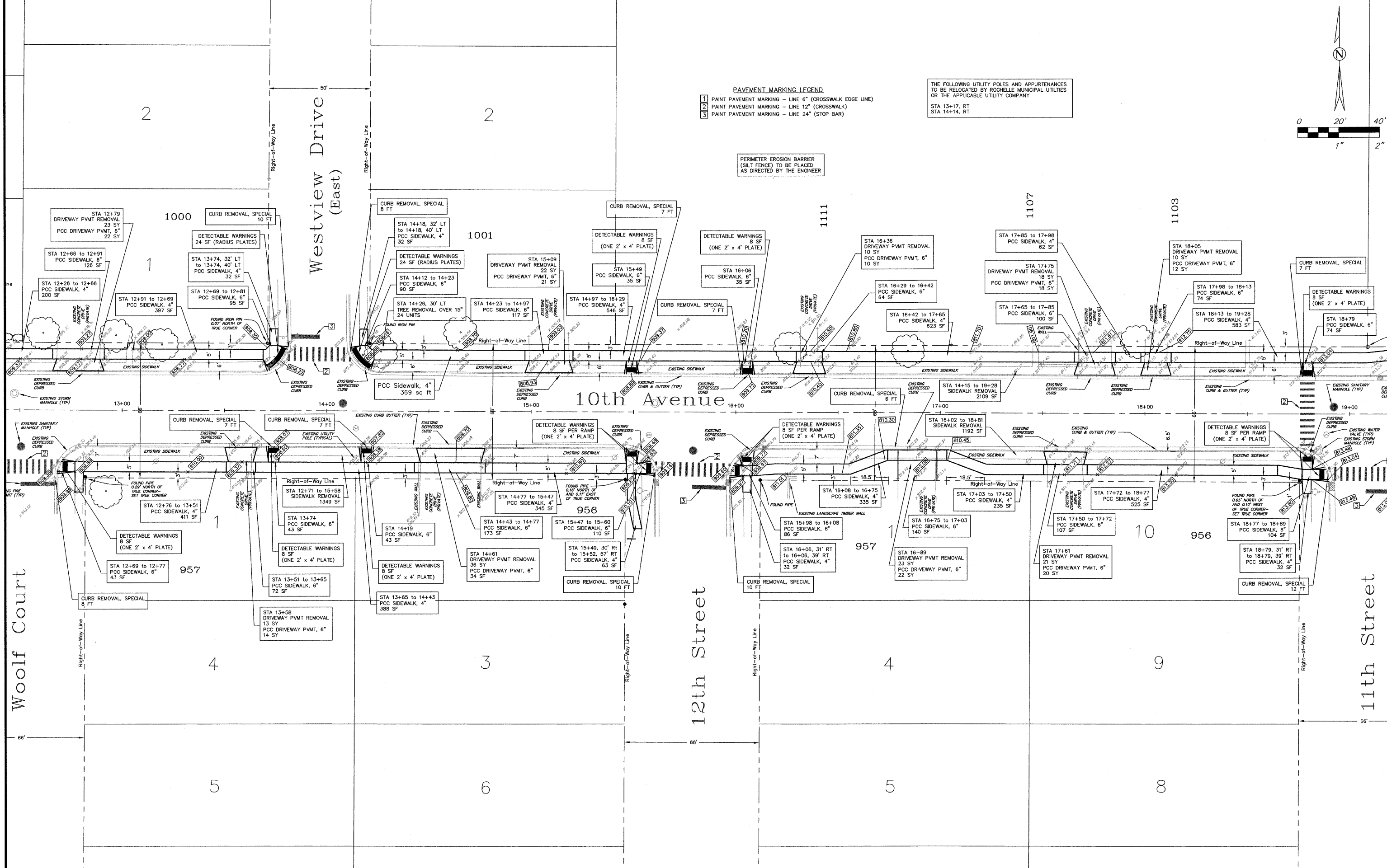


- PAVEMENT MARKING LEGEND**
- 1 PAINT PAVEMENT MARKING - LINE 6" (CROSSWALK EDGE LINE)
 - 2 PAINT PAVEMENT MARKING - LINE 12" (CROSSWALK)
 - 3 PAINT PAVEMENT MARKING - LINE 24" (STOP BAR)
- THE FOLLOWING UTILITY POLES AND APPURTENANCES TO BE RELOCATED BY ROCHELLE MUNICIPAL UTILITIES OR THE APPLICABLE UTILITY COMPANY:
 STA 13+17, RT
 STA 14+14, RT

PERIMETER EROSION BARRIER (SILT FENCE) TO BE PLACED AS DIRECTED BY THE ENGINEER



REVISIONS			
REV	DESCRIPTION	DATE	APPROVED
1	Per IDOT Review	3/23/09	SCT
2	Per IDOT Review	3/30/09	SCT