

F.A. RTE.	SECTION	COUNTY	TOTAL SHEETS	SHEET NO.
653	06-00085-00-LT	LaSALLE	10	1
FED. ROAD DIST. NO.	ILLINOIS	CONTRACT NO. 87334		

**STATE OF ILLINOIS**  
**DEPARTMENT OF TRANSPORTATION**  
**DIVISION OF HIGHWAYS**  
**PLANS FOR PROPOSED**  
**LOCAL AGENCY IMPROVEMENT**

SHEET NO.	INDEX TO SHEETS
1	COVER SHEET
2	SUMMARY AND SCHEDULE OF QUANTITIES
3-4	TYPICAL CROSS SECTIONS, LEGEND, AND GENERAL NOTES
5-8	STREETSCAPE IMPROVEMENT PLAN
9	CONTROL AND SURVEY TIES
10	MISCELLANEOUS DETAILS

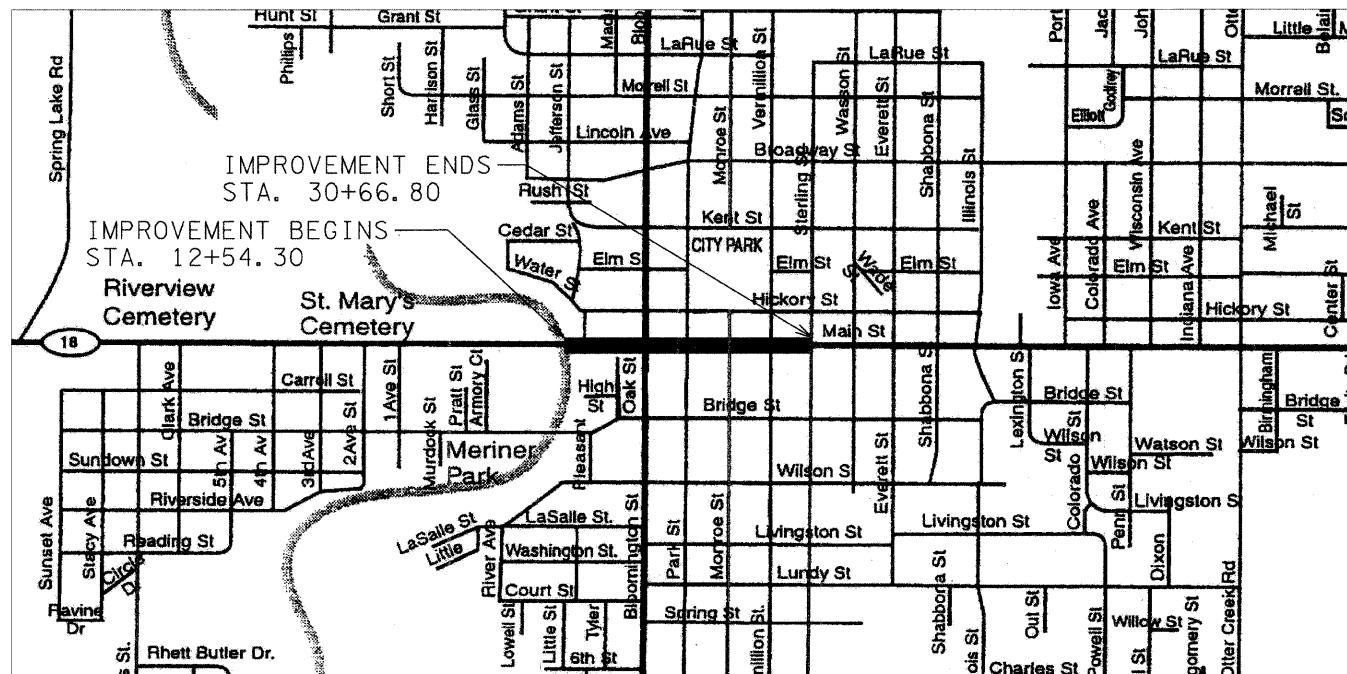
**STATE STANDARD DETAILS**

000001-05	STANDARD SYMBOLS, ABBREVIATIONS AND PATTERNS
701006-03	OFF-RD OPERATIONS, 2L, 2W, 15' (4.5 m) TO 24" (600 mm) FROM PAVEMENT EDGE
701011-02	OFF-RD MOVING OPERATIONS, 2L, 2W, DAY ONLY
701301-03	LANE CLOSURE, 2L, 2W, SHORT TIME OPERATIONS
701501-05	URBAN LANE CLOSURE, 2L, 2W, UNDIVIDED
701601-06	URBAN LANE CLOSURE, MULTILANE, 1W OR 2W WITH NONTRAVERSABLE MEDIAN
701701-06	URBAN LANE CLOSURE, MULTILANE INTERSECTION
701801-04	LANE CLOSURE MULTILANE 1W OR 2W CROSSWALK OR SIDEWALK CLOSURE
701901-01	TRAFFIC CONTROL DEVICES

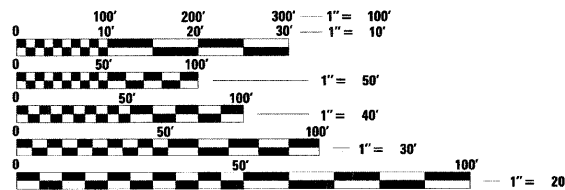
**BENCHMARKS:**

- A. TFH - SE CORNER OF MAIN ST. AND STERLING ST. (ELEV=100.00)
- B. TFH - S. SIDE OF MAIN ST. BETWEEN STERLING ST. AND VERMILLION ST. (ELEV=99.86)
- C. TFH - S. SIDE OF MAIN ST. BETWEEN VERMILLION ST. AND MONROE ST. (ELEV=100.32)
- D. TFH - S. SIDE OF MAIN ST. BETWEEN MONROE ST. AND PARK ST. (ELEV=101.53)
- E. TFH - SW CORNER OF MAIN ST. AND OAK ST. (ELEV=100.67)

**CITY OF STREATOR**  
**LaSALLE COUNTY**  
**PROJECT NO. TE- 00D3 (52)**  
**JOB C-93-015-07**  
**ILLINOIS ROUTE 18 (FAP 653)**  
**STREETSCAPE DESIGN**  
**(FROM VERMILION RIVER BRIDGE**  
**TO STERLING STREET)**  
**SECTION 06-00085-00-LT**



LOCATION MAP - CITY OF STREATOR  
TOTAL LENGTH OF PROJECT = 1,812.5 FEET = 0.343 MILES  
NET LENGTH OF PROJECT = 1,812.5 FEET = 0.343 MILES



FULL SIZE PLANS HAVE BEEN PREPARED USING STANDARD ENGINEERING SCALES. REDUCED SIZED PLANS WILL NOT CONFORM TO STANDARD SCALES. IN MAKING MEASUREMENTS ON REDUCED PLANS, THE ABOVE SCALES MAY BE USED.

**J.U.L.I.E.**  
**JOINT UTILITY LOCATION INFORMATION FOR EXCAVATION**  
**1-800-892-0123**  
**OR 811**

**CONTRACT NO. 87334**



*Joseph M. Mulhobby* DATE: 3/27/09  
SIGNATURE EXPIRATION 11/30/2009

STATE OF ILLINOIS  
DEPARTMENT OF TRANSPORTATION  
DIVISION OF HIGHWAYS

APPROVED 3-27 2009  
*Ray Schmidt*  
LOCAL AGENCY REPRESENTATIVE

PASSED MARCH 31 2009  
*Kenneth R. Lopez*  
DISTRICT 3 ENGINEER OF LOCAL ROADS AND STREETS

RELEASING MARCH 31 2009  
FOR BID  
BASED ON *George F. Ryan*  
LIMITED REVIEW DEPUTY DIRECTOR OF HIGHWAYS  
REGION TWO ENGINEER

**PRINTED BY THE AUTHORITY**  
**OF THE STATE OF ILLINOIS**