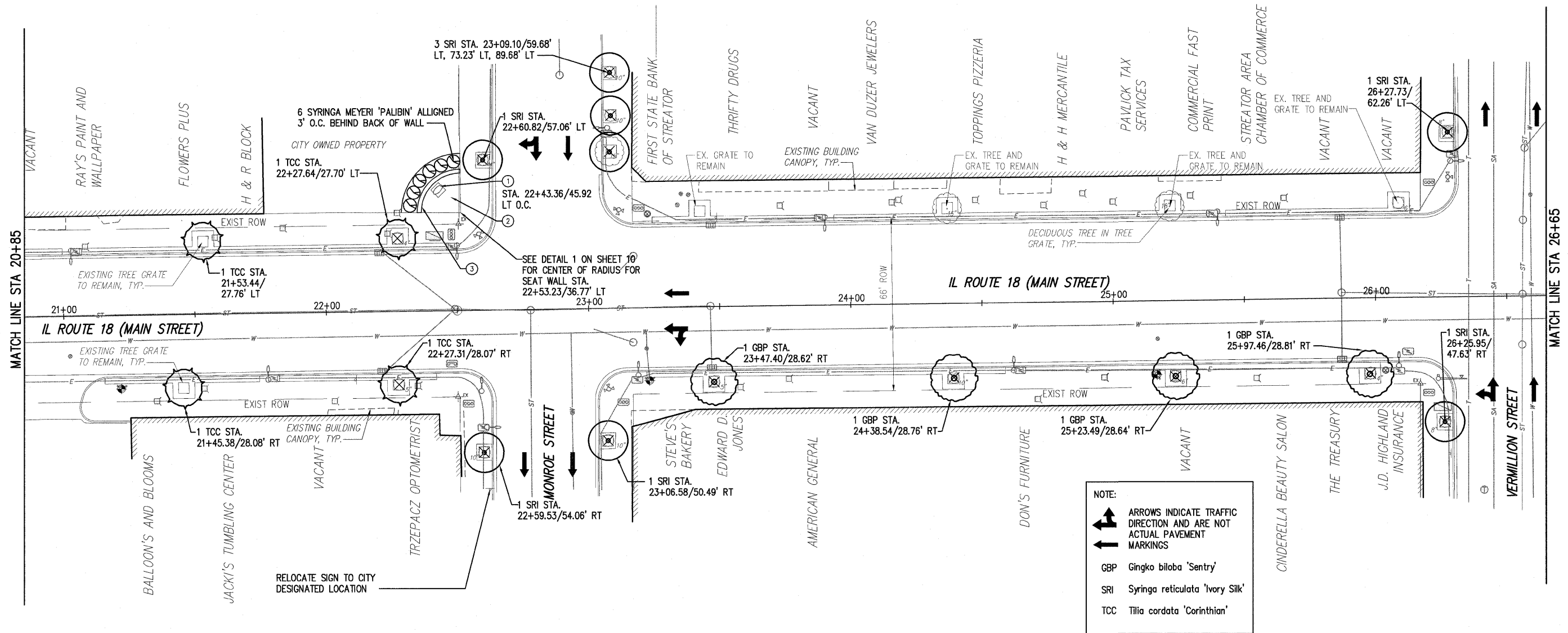


SECTION 24, TOWNSHIP 31 N, RANGE 03 E

SECTION 36, TOWNSHIP 31 N, RANGE 03 E

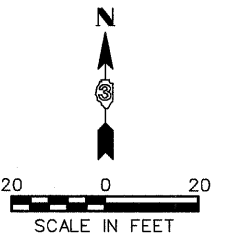


NOTE:

- ARROWS INDICATE TRAFFIC DIRECTION AND ARE NOT ACTUAL PAVEMENT MARKINGS
- GBP Ginkgo biloba 'Sentry'
- SRI Syringa reticulata 'Ivory Silk'
- TCC Tilia cordata 'Corinthian'

KEYNOTES

- 1 STREET CLOCK ELEVATION DETAIL, SEE DETAIL 2/10
- 2 STREET CLOCK PLAZA PLAN, SEE DETAIL 1/10
- 3 SEATWALL CROSS SECTION DETAIL, SEE DETAIL 4/10



P:\2007\007008100-Strvector II, Route 18 Streetscape Design\Phase 2\Draw

FILE NAME = \$FILEL\$	USER NAME = \$USER\$	DESIGNED -- BRD	REVISED -- 03/27/09	STATE OF ILLINOIS DEPARTMENT OF TRANSPORTATION	STREETScape IMPROVEMENT PLAN	F.A.P. RTE. 653	SECTION 06-00085-00-LT	COUNTY LaSALLE	TOTAL SHEETS 10	SHEET NO. 07	
PLOT SCALE = \$SCALE\$	CHECKED -- BAB	DRAWN -- STH	REVISED -- ---			SCALE: 1" = 20'	SHEET NO. 07 OF 10 SHEETS	FED. ROAD DIST. NO. ILLINOIS FED. AID PROJECT		CONTRACT NO. 87334	
PLOT DATE = \$DATE\$	DATE -- 02/27/09	REVISOR -- ---	REVISED -- ---			STA. 20+85.00 TO STA. 26+65.00					
		REVISOR -- ---	REVISED -- ---								