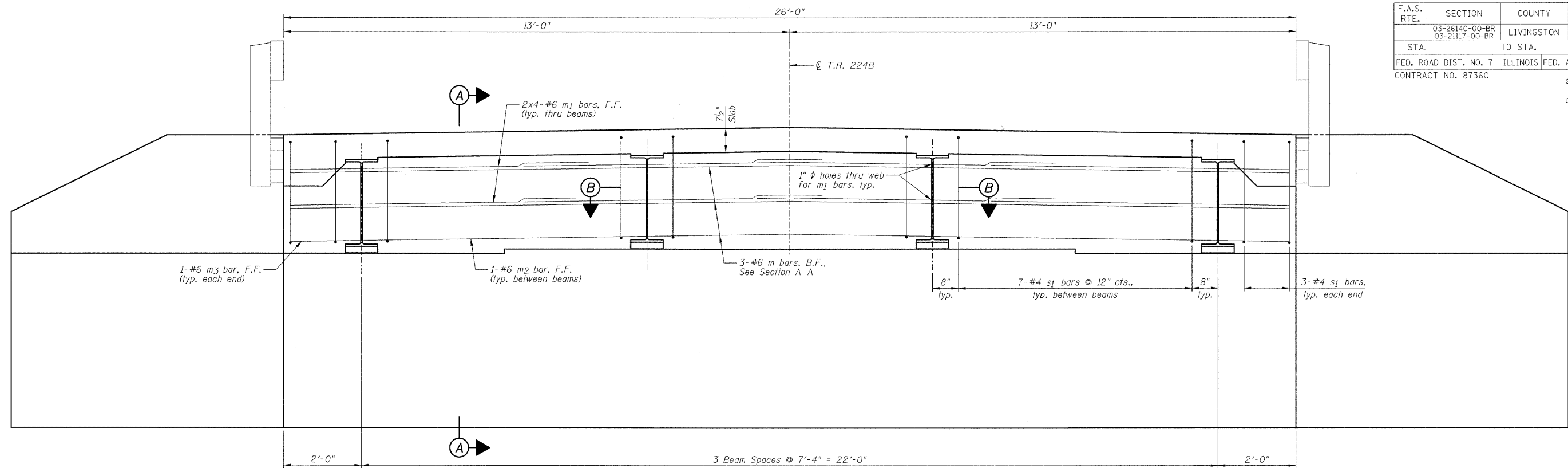
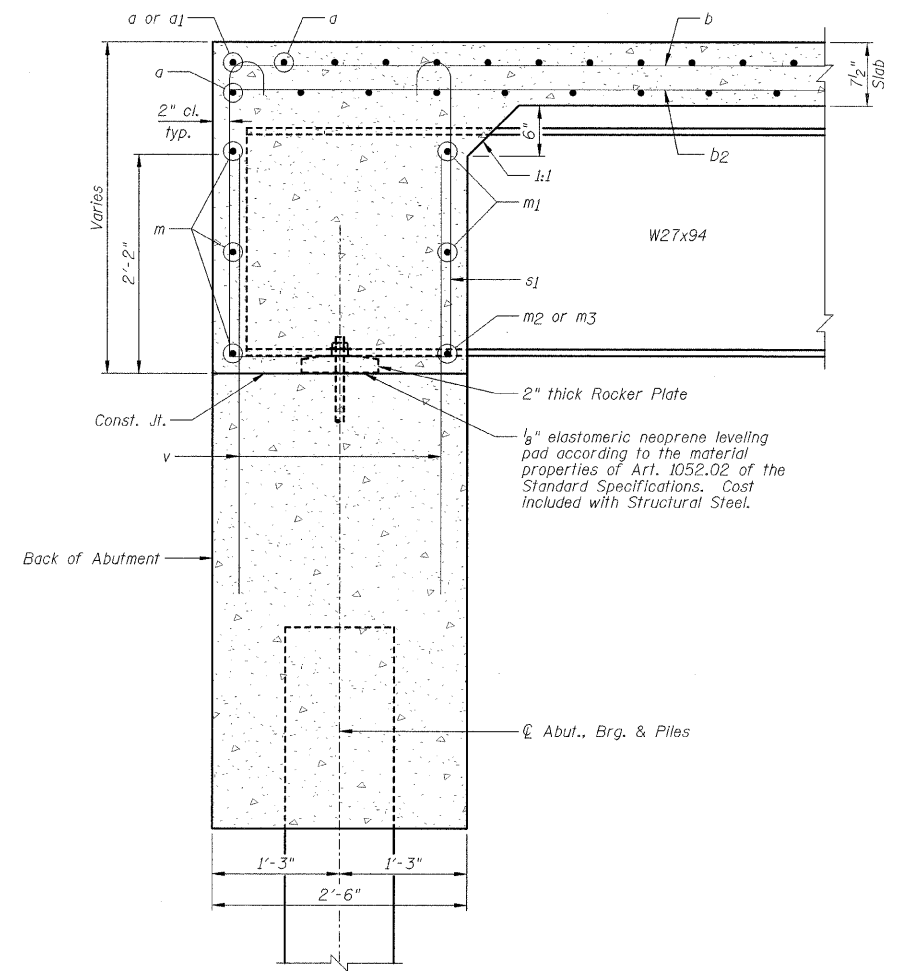


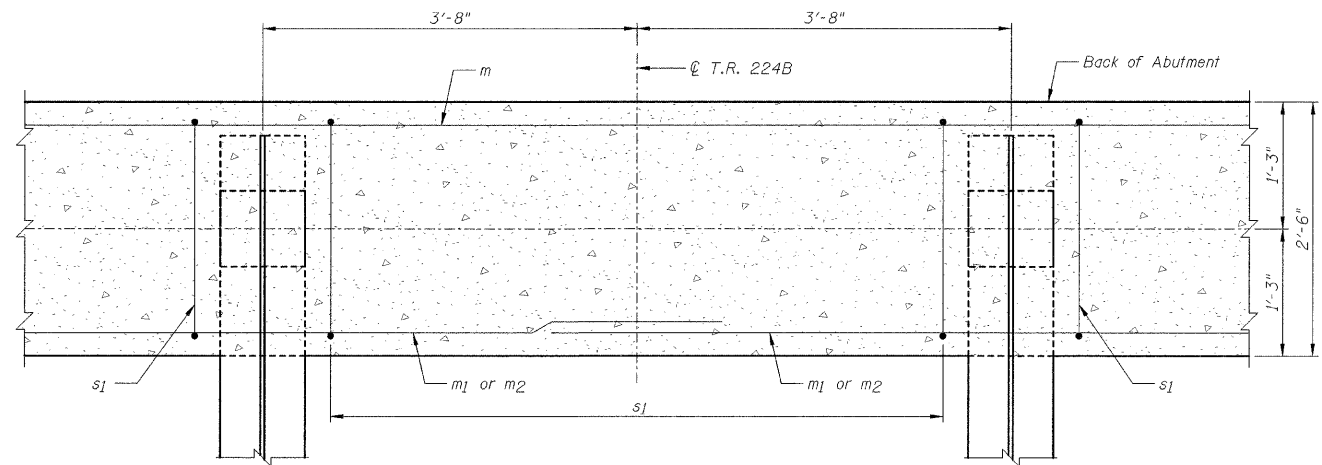
|                       |                                  |                              |              |           |
|-----------------------|----------------------------------|------------------------------|--------------|-----------|
| F.A.S. RTE.           | SECTION                          | COUNTY                       | TOTAL SHEETS | SHEET NO. |
|                       | 03-26140-00-BR<br>03-21117-00-BR | LIVINGSTON                   | 28           | 14        |
| STA.                  | TO STA.                          |                              |              |           |
| FED. ROAD DIST. NO. 7 | ILLINOIS                         | FED. AID PROJECT*            |              |           |
| CONTRACT NO. 87360    |                                  | SHEET NO. B7<br>OF 17 SHEETS |              |           |



ELEVATION OF DIAPHRAGM AT ABUTMENT



SECTION A-A



SECTION B-B

- NOTES:**
- 1.) Work this sheet with Sheets B6, B10 & B13.
  - 2.) Quantities for reinforcing steel & concrete superstructure in the diaphragm shall be included with the superstructure. See Sheet B6.
  - 3.) F.F. denotes Front Face, B.F. denotes Back Face.
  - 4.) Minimum bar lap #6 = 2'-10".

|   |                       |
|---|-----------------------|
| SECTION 03-26140-00-BR<br>SECTION 03-21117-00-BR<br>LIVINGSTON COUNTY |                       |
| DIAPHRAGM DETAILS   |                       |
| DESIGNED BY<br>S.D.H.   | FILE NO.<br>24-7191   |
| DRAWN BY<br>D.J.M.  | DATE<br>03/17/09      |
| CHECKED BY<br>M.S.W.  | SHEET NO.<br>14 of 28 |

**Farnsworth GROUP**  
2700 McGraw Drive  
Bloomington, Illinois 61704  
309/333-8436, 309/333-1871 fax