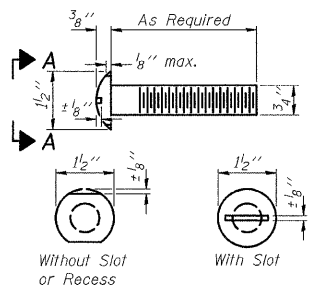
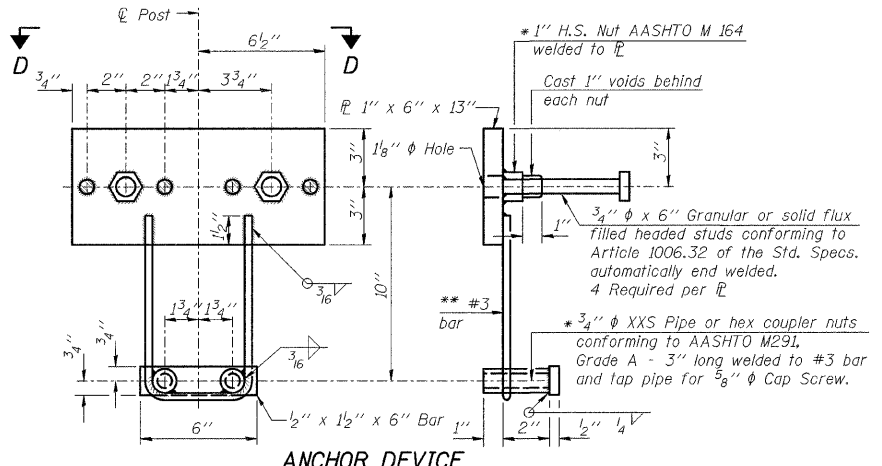
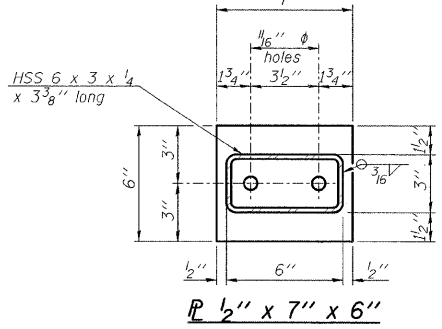
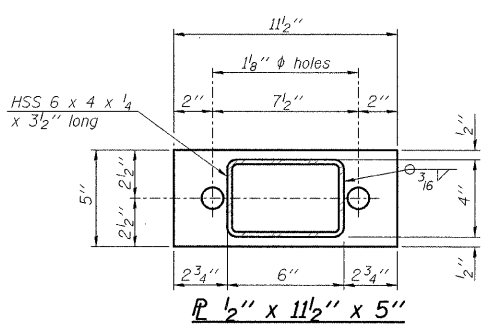


F.A.S. RTE.	SECTION	COUNTY	TOTAL SHEETS	SHEET NO.
	03-26140-00-BR 03-21117-00-BR	LIVINGSTON	28	15
STA.	TO STA.			
FED. ROAD DIST. NO. 7	ILLINOIS	FED. AID PROJECT		
CONTRACT NO. 87360		SHEET NO. B8		

OF 17 SHEETS



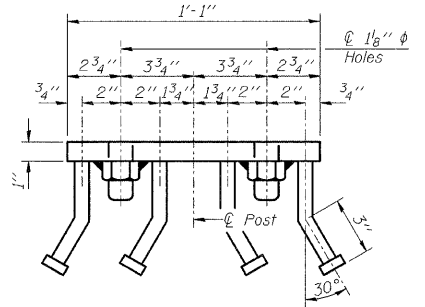
**VIEW A-A
ROUND HEAD BOLT**



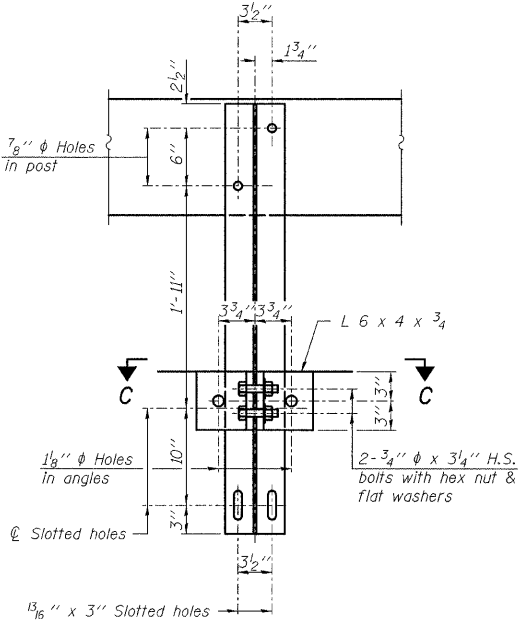
ANCHOR DEVICE

- * Threaded areas shall be plugged or blocked off during casting of beam.
- ** Whenever the lower insert assemblies interfere with strand locations, the #3 bars shall be cut and adjusted in order to allow raising or lowering of the lower inserts. Maximum adjustment not to exceed 1/2".

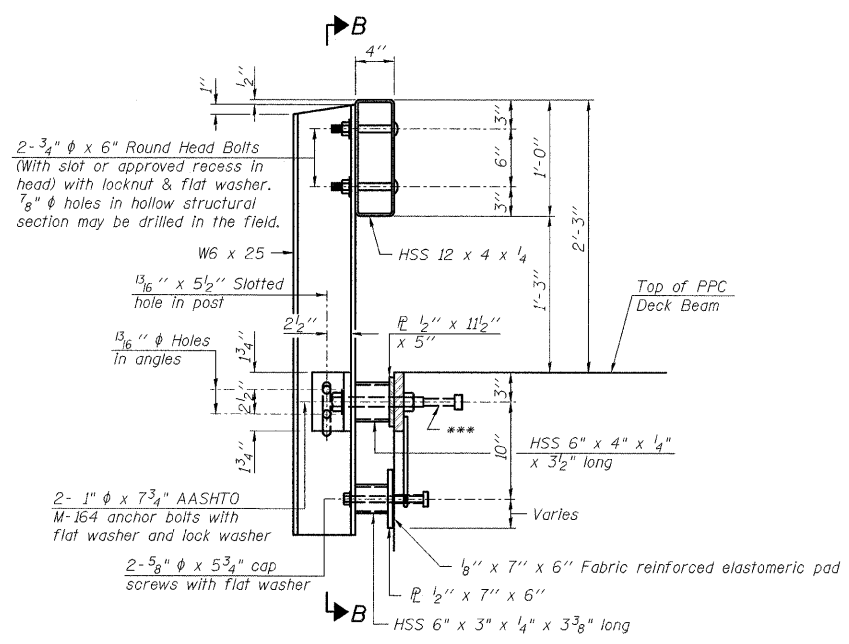
Notes:
All field drilled holes shall be coated with an approved zinc rich paint before erection.
For multi-span bridges, sufficient 1/4" x 6" x 1'-2" galvanized steel shims shall be provided to align rail between adjacent spans. Cost included with Steel Railing, Type S-1.
All steel rail elements shall be galvanized according to Article 509.05 of the Standard Specifications.
*** The studs of the anchor devices shall be placed below the top reinforcement bars and the outermost longitudinal reinforcement bar shall be placed directly above the studs of the rail post anchor device.



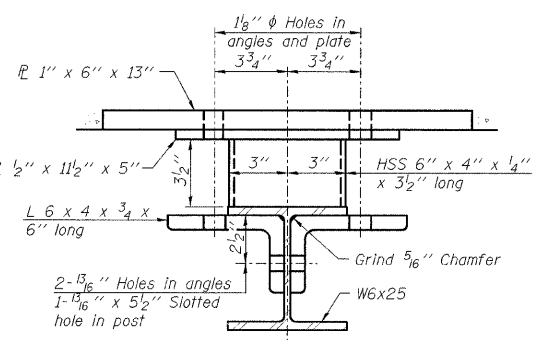
VIEW D-D



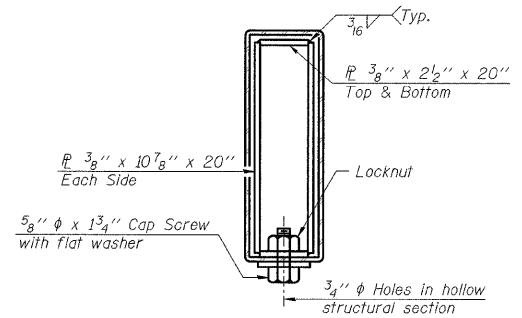
SECTION B-B



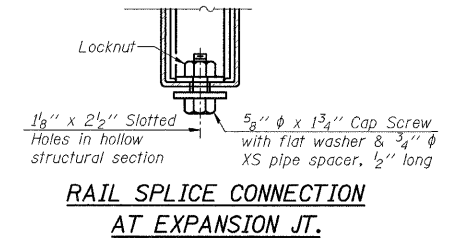
SECTION AT RAILING POST



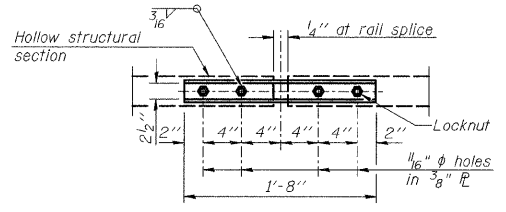
SECTION C-C



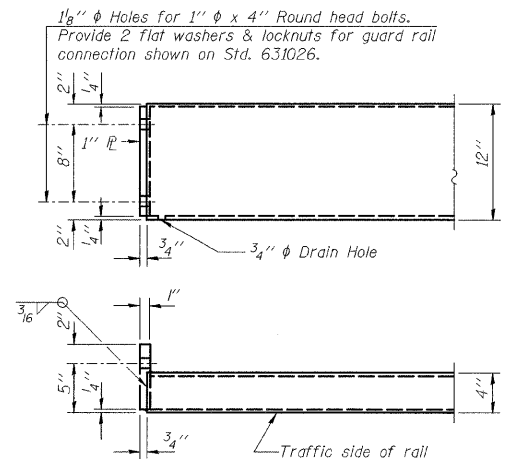
SECTIONS AT RAIL SPLICE



**RAIL SPLICE CONNECTION
AT EXPANSION JT.**



**PLAN-BOTT. SPLICE R
TYPICAL**



END OF RAIL DETAILS

BILL OF MATERIAL

Item	Unit	Quantity
Steel Railing, Type S-1	Foot	328

SECTION 03-26140-00-BR
SECTION 03-21117-00-BR
LIVINGSTON COUNTY

STEEL RAILING, TYPE S-1

DESIGNED BY S.D.H.	<p>2700 McGraw Drive Bloomington, Illinois 61704 309/263-8436, 309/883-1671 fax</p>	FILE NO. 24-7191
DRAWN BY D.J.M.		DATE 03/17/09
CHECKED BY M.S.W.		SHEET NO. 15 of 28