

TYSON ENGINEERING, INC.
 CONSULTING CIVIL ENGINEERS
 367 SOUTH SCHUYLER AVENUE
 KANKAKEE, ILLINOIS 60901
 PHONE (815) 952-7406

This document and the ideas and designs incorporated herein, as an instrument of professional service, is the property of Tyson Engineering Inc. and is not to be used in whole or in part, for any other project without written authorization of Tyson Engineering Inc.

Do not scale drawings. Use dimensions only. Contractor shall be responsible for verifying all dimensions.

Information hereon and herein is confidential.

REVISIONS				
NO.	DATE	BY	DESCRIPTION	
1	3/13/09	NRD	PER IDOT REVIEW	

PLAN & PROFILE
 STA. 40+50 TO STA. 51+50

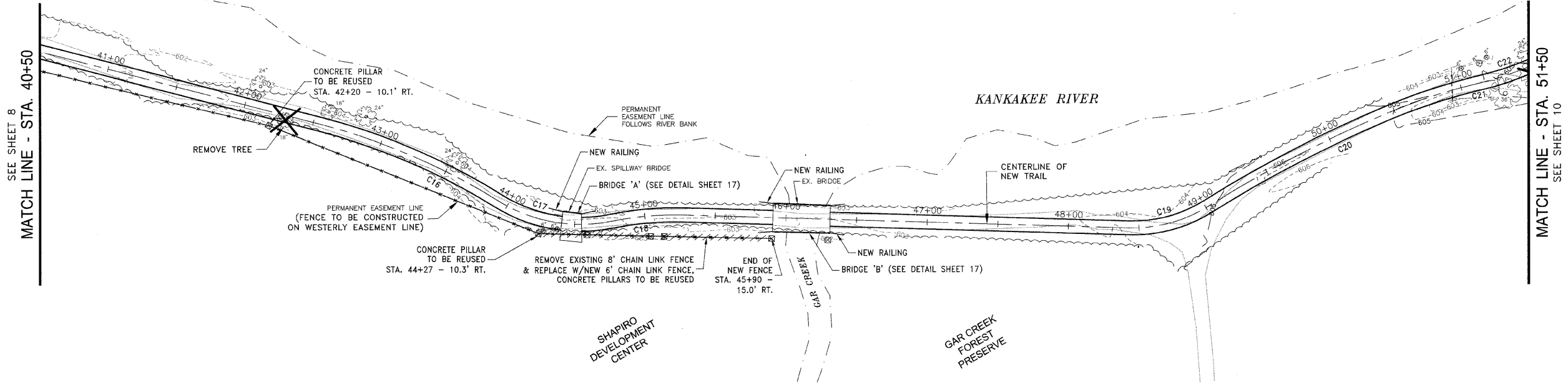
IMPROVEMENTS TO SERVE RIVERFRONT TRAIL PHASE 1

SECTION
 06-0001-00-BT

DATE: DATE JOB NO. E07093
 SCALE: HORZ.: 1"=40' FILE NO.
 VERT.: 1"=4' SHEET
 DRAWN BY: NRD SHEET 9
 CHECKED BY: SRM OF 18

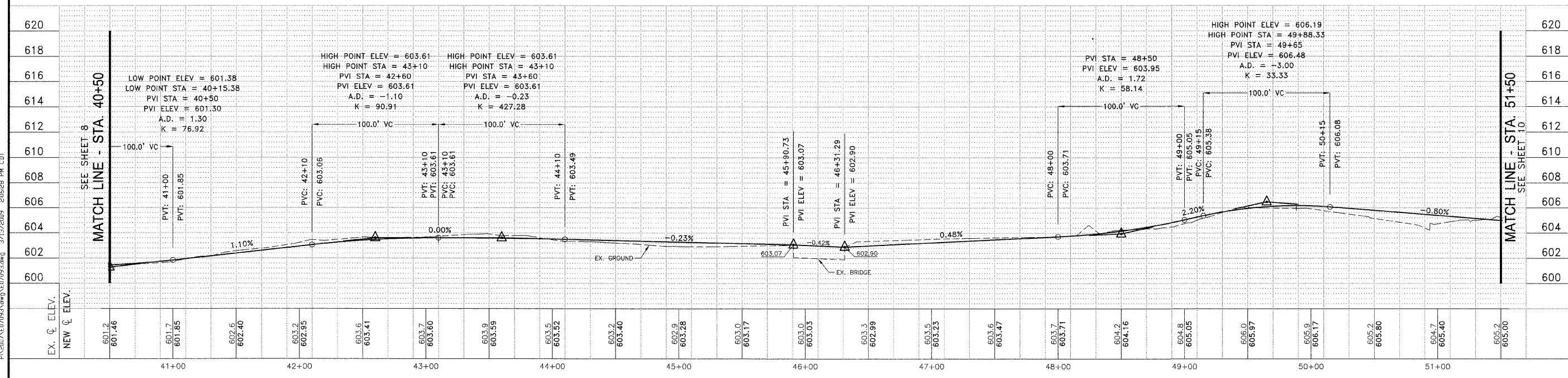
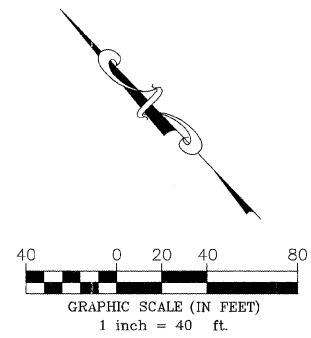
SEE SHEET 8
 MATCH LINE - STA. 40+50

MATCH LINE - STA. 51+50
 SEE SHEET 10



CURVE TABLE					
CURVE	LENGTH	RADIUS	TANGENT	DELTA ANGLE	P.I. STATION
C1	10.63	10.00	5.88	60°52'44"	9+91.58
C2	104.84	100.00	57.82	60°04'13"	11+78.74
C3	82.34	100.00	43.67	47°10'43"	12+69.43
C4	554.58	2000.00	279.08	15°53'15"	15+87.18
C5	60.79	150.00	30.82	23°13'17"	18+93.50
C6	58.15	200.00	29.28	16°39'35"	19+52.75
C7	115.06	100.00	65.27	86°16'08"	20+93.03
C8	88.34	100.00	47.28	50°36'46"	21+90.69
C9	94.79	100.00	51.30	54°18'41"	23+67.53
C10	72.53	100.00	37.94	41°33'16"	24+48.96
C11	78.72	500.00	39.44	9°01'15"	28+66.88
C12	72.16	200.00	36.48	20°40'19"	29+42.64
C13	148.68	125.00	84.55	68°08'57"	31+70.64
C14	164.29	101.00	106.80	93°12'00"	33+41.57
C15	439.15	600.00	229.93	41°56'09"	38+17.30
C16	136.97	450.00	69.02	17°26'24"	43+24.52
C17	83.84	110.00	44.07	43°40'07"	44+36.54
C18	51.10	220.00	25.67	13°18'34"	45+01.98
C19	58.65	100.00	30.20	33°36'22"	48+73.19
C20	142.85	900.00	71.58	9°05'49"	49+73.22
C21	66.34	400.00	33.25	9°30'10"	50+77.75
C22	56.48	227.85	28.39	14°12'11"	51+42.72
C23	51.89	300.00	26.01	9°54'39"	54+24.63
C24	53.69	200.00	27.01	15°22'53"	54+77.52
C25	51.80	450.00	25.93	6°35'44"	56+12.99
C26	50.98	700.00	25.50	4°10'22"	56+74.31
C27	57.03	250.00	26.64	13°04'16"	58+26.72
C28	52.25	200.00	26.27	14°58'07"	58+94.84
C29	79.59	500.00	39.88	9°07'13"	59+73.15
C30	56.22	1200.00	28.12	2°41'04"	61+01.33
C31	94.63	300.00	47.71	18°04'24"	63+59.67
C32	50.59	400.00	25.33	7°14'47"	64+65.47
C33	51.96	150.00	26.21	18°36'30"	65+47.63
C34	85.35	100.00	45.47	48°54'02"	67+14.52
C35	68.67	100.00	35.75	39°20'36"	67+90.15

- NOTES:**
- ON THE GAR CREEK BRIDGE AND SPILLWAY BRIDGE, THE AREAS OF EXPOSED REBAR SHALL BE CLEANED OF LOOSE CONCRETE AND RUST ON BARS. A CONCRETE PATCH SHALL BE INSTALLED AND TROWELED TO MATCH ADJACENT CONCRETE. (PAID AS STRUCTURAL REPAIR OF CONCRETE)
 - ON THE SPILLWAY BRIDGE, AREAS OF POCKETED LIMESTONE FOUNDATION SHALL BE FILLED WITH CONCRETE (PAID AS CLASS S1 CONCRETE). RIPRAP CLASS A4 SHALL BE PLACED ALONG THE FOUNDATION.



P:\2017\07093\Drawings\07093.dwg 3/13/2009 2:05:28 PM CDT