

TYSON ENGINEERING, INC.
 CONSULTING CIVIL ENGINEERS
 AND SURVEYORS
 DESIGN FIRM LICENSE #194-001136
 367 SOUTH SCHUYLER AVENUE
 KANKAKEE, ILLINOIS 60901
 PHONE (815) 932-7406

This document and the ideas and designs incorporated herein, as an instrument of professional service, is the property of Tyson Engineering Inc. and is not to be used in whole or in part, for any other project without written authorization of Tyson Engineering Inc.

Do not scale drawings. Use dimensions only. Contractor shall be responsible for verifying all dimensions.
 Information hereon and herein is confidential.

REVISIONS

NO.	DATE	BY	DESCRIPTION
1	3/13/09	NRD	PER IDOT REVIEW

PLAN & PROFILE
 STA. 51+50 TO STA. 62+50

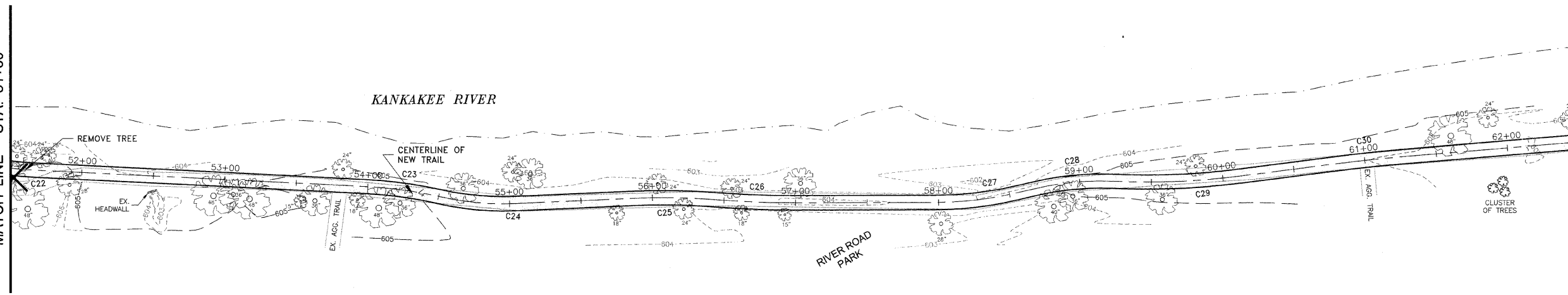
IMPROVEMENTS TO SERVE RIVERFRONT TRAIL PHASE 1

SECTION
 06-00001-00-BT

DATE:	DATE:	JOB NO. E07093
SCALE: HORZ.: 1"=40'	FILE NO.	
VERT.: 1"=4'		
DRAWN BY: NRD	SHEET	10
CHECKED BY: SRM	OF 18	

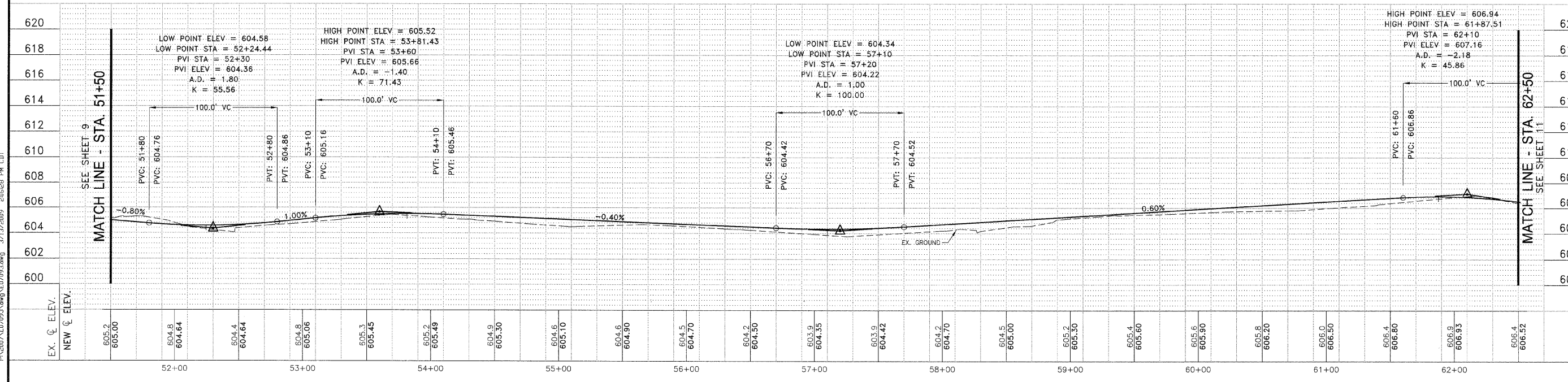
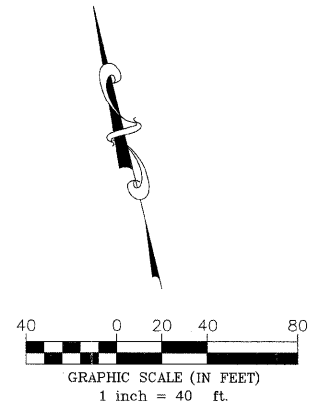
SEE SHEET 9
 MATCH LINE - STA. 51+50

MATCH LINE - STA. 62+50
 SEE SHEET 11



KANKAKEE COMMUNITY COLLEGE

CURVE	LENGTH	RADIUS	TANGENT	DELTA ANGLE	P.I. STATION
C1	10.63	10.00	5.88	60°52'44"	9+91.59
C2	104.84	100.00	57.82	60°04'13"	11+78.74
C3	82.34	100.00	43.67	47°10'43"	12+69.43
C4	554.58	2000.00	279.08	15°53'15"	15+87.18
C5	60.79	150.00	30.82	23°13'17"	18+93.50
C6	58.15	200.00	29.28	16°39'35"	19+52.75
C7	115.66	100.00	65.27	66°16'05"	20+93.03
C8	88.34	100.00	47.28	50°38'45"	21+90.89
C9	94.79	100.00	51.90	54°18'41"	23+67.53
C10	72.53	100.00	37.94	41°33'16"	24+48.98
C11	78.72	500.00	39.44	9°01'15"	28+66.88
C12	72.16	200.00	36.48	20°40'19"	29+42.64
C13	148.68	125.00	84.55	68°08'57"	31+70.64
C14	164.29	101.00	106.80	93°12'00"	33+41.57
C15	439.15	600.00	229.93	41°58'09"	38+17.30
C16	136.97	450.00	69.02	17°26'24"	43+24.52
C17	83.84	110.00	44.07	43°40'07"	44+36.54
C18	51.10	220.00	25.67	13°18'34"	45+01.98
C19	58.65	100.00	30.20	33°36'22"	48+73.19
C20	142.05	900.00	71.56	9°05'40"	49+73.22
C21	66.34	400.00	33.25	9°30'10"	50+77.76
C22	56.48	227.85	28.39	14°12'11"	51+42.72
C23	51.89	300.00	26.01	9°54'39"	54+24.63
C24	53.69	200.00	27.01	15°22'53"	54+77.52
C25	51.80	450.00	25.93	6°35'44"	56+12.99
C26	50.98	700.00	25.50	4°10'22"	56+74.31
C27	57.03	250.00	28.64	13°04'16"	58+26.72
C28	52.25	200.00	26.27	14°58'07"	58+94.94
C29	79.59	500.00	39.88	9°07'13"	59+73.15
C30	56.22	1200.00	28.12	2°41'04"	61+01.33
C31	94.63	300.00	47.71	16°04'24"	63+59.67
C32	50.59	400.00	25.33	7°14'47"	64+05.47
C33	51.96	160.00	26.21	18°36'30"	65+47.83
C34	85.35	100.00	45.47	48°54'02"	67+14.52
C35	68.67	100.00	35.75	39°20'36"	67+90.15



P:\2007\ED07093\dwg\ED07093.dwg 3/13/09 2:06:28 PM CDT