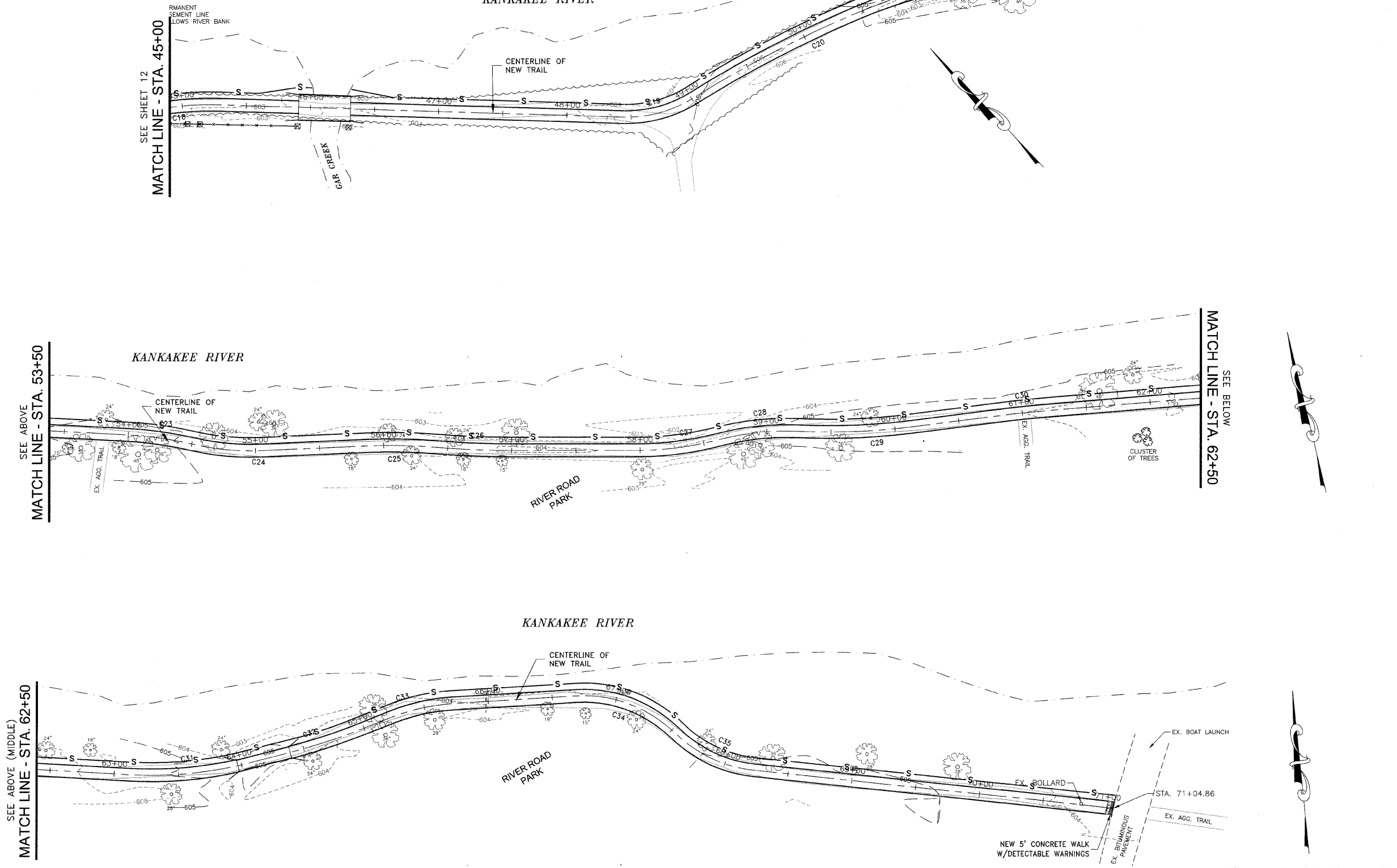


EROSION CONTROL LEGEND			
■	NEW INLET	□	INLET AND PIPE PROTECTION
●	NEW MANHOLE	U	CULVERT INLET PROTECTION
▲	NEW FLARED END SECTION	— S —	PERIMETER EROSION BARRIER
▨	NEW CURB AND GUTTER	▨	EROSION CONTROL BLANKET; INSTALL DITCH CHECKS IN ACCORDANCE WITH PLACEMENT OF TEMPORARY STRAW BALE DITCH CHECK IN DRAINAGEWAY DETAIL
▨	RIP RAP		
◇	TEMPORARY DITCH CHECK		



SEE BELOW (MIDDLE)
MATCH LINE - STA. 53+50

SEE BELOW
MATCH LINE - STA. 62+50

FAU. RTE.	SECTION	COUNTY	TOTAL SHEETS	SHEET NO.
*	**	KANKAKEE	17	13

CONTRACT NO. 87390

FED. ROAD DIST. NO. ILLINOIS FED. AID PROJECT

*06-00001-00-BT

TYSON ENGINEERING, INC.
 CONSULTING CIVIL ENGINEERS
 AND SURVEYORS
 DESIGN FIRM LICENSE # 164-001136
 367 SOUTH SCHUYLER AVENUE
 KANKAKEE, ILLINOIS 60901
 PHONE (815) 952-7406

This document and the ideas and designs incorporated herein, as an instrument of professional service, is the property of Tyson Engineering Inc. and is not to be used in whole or in part, for any other project without written authorization of Tyson Engineering Inc.

Do not scale drawings. Use dimensions only. Contractor shall be responsible for verifying all dimensions.

Information hereon and herein is confidential.

REVISIONS			
NO.	DATE	BY	DESCRIPTION
1	3/13/09	NRD	PER IDOT REVIEW

STORM WATER POLLUTION PREVENTION PLAN
 STA. 45+00 TO STA. 71+14.05

IMPROVEMENTS TO SERVE RIVERFRONT TRAIL PHASE 1

SECTION 06-00001-00-BT

DATE:	DATE	JOB NO.
SCALE:	1"=40'	E07093
DRAWN BY:	NRD	FILE NO.
CHECKED BY:	SRM	SHEET
		13
		OF 18