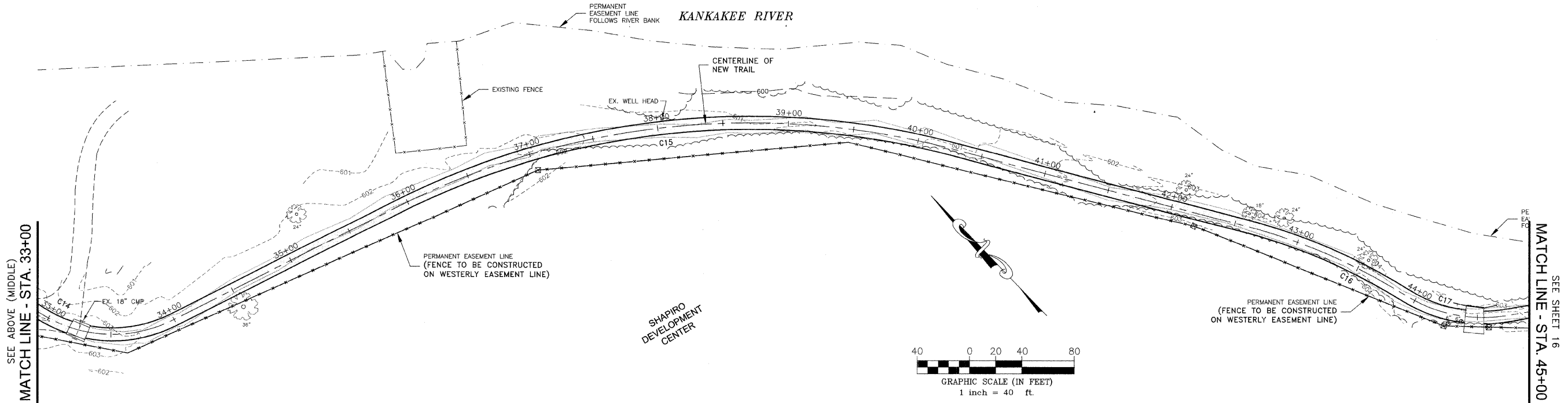
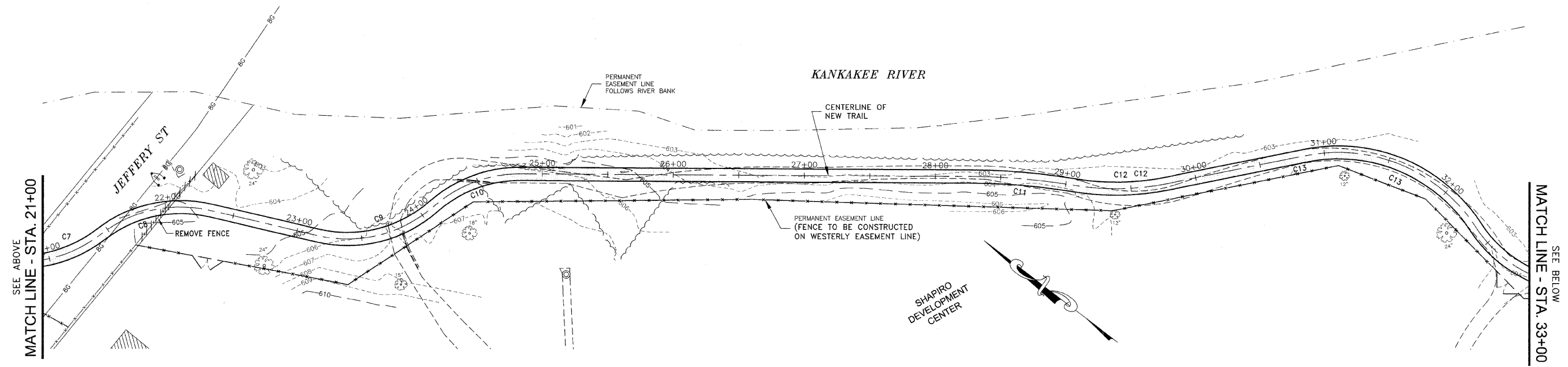
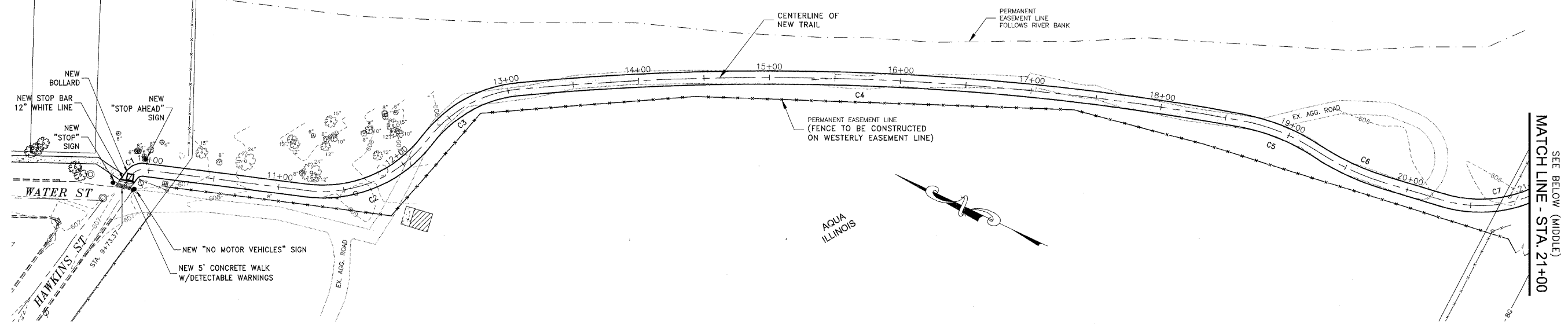


KANKAKEE RIVER



SEE BELOW (MIDDLE)  
MATCH LINE - STA. 21+00

SEE BELOW  
MATCH LINE - STA. 33+00

SEE SHEET 16  
MATCH LINE - STA. 45+00

FAU. RITE.	SECTION	COUNTY	TOTAL SHEETS	SHEET NO.
*	**	KANKAKEE	17	15

CONTRACT NO. 87390  
FED. ROAD DIST. NO. ILLINOIS FED. AID PROJECT

\*\*06-00001-00-BT

**TYSON ENGINEERING, INC.**  
CONSULTING CIVIL ENGINEERS AND SURVEYORS  
DESIGN FIRM LICENSE #164-001136  
367 SOUTH SCHUYLER AVENUE  
KANKAKEE, ILLINOIS 60901  
PHONE (815) 932-7406

This document and the ideas and designs incorporated herein, as an instrument of professional service, is the property of Tyson Engineering Inc. and is not to be used in whole or in part, for any other project without written authorization of Tyson Engineering Inc.

Do not scale drawings. Use dimensions only. Contractor shall be responsible for verifying all dimensions.

Information hereon and herein is confidential.

REVISIONS			
NO.	DATE	BY	DESCRIPTION
1	3/13/09	NRD	PER IDOT REVIEW

**STRIPING AND SIGNAGE PLAN**  
STA. 9+73.37 TO STA. 45+00

**IMPROVEMENTS TO SERVE RIVERFRONT TRAIL PHASE 1**

SECTION  
06-00001-00-BT

DATE:	DATE	JOB NO.
SCALE:	1"=40'	FILE NO.
DRAWN BY:	NRD	SHEET
CHECKED BY:	SRM	<b>15</b>
		OF 18

P:\2007\ED7093.dwg 3/13/2009 2:06:58 PM CDT