

INDEX OF SHEETS

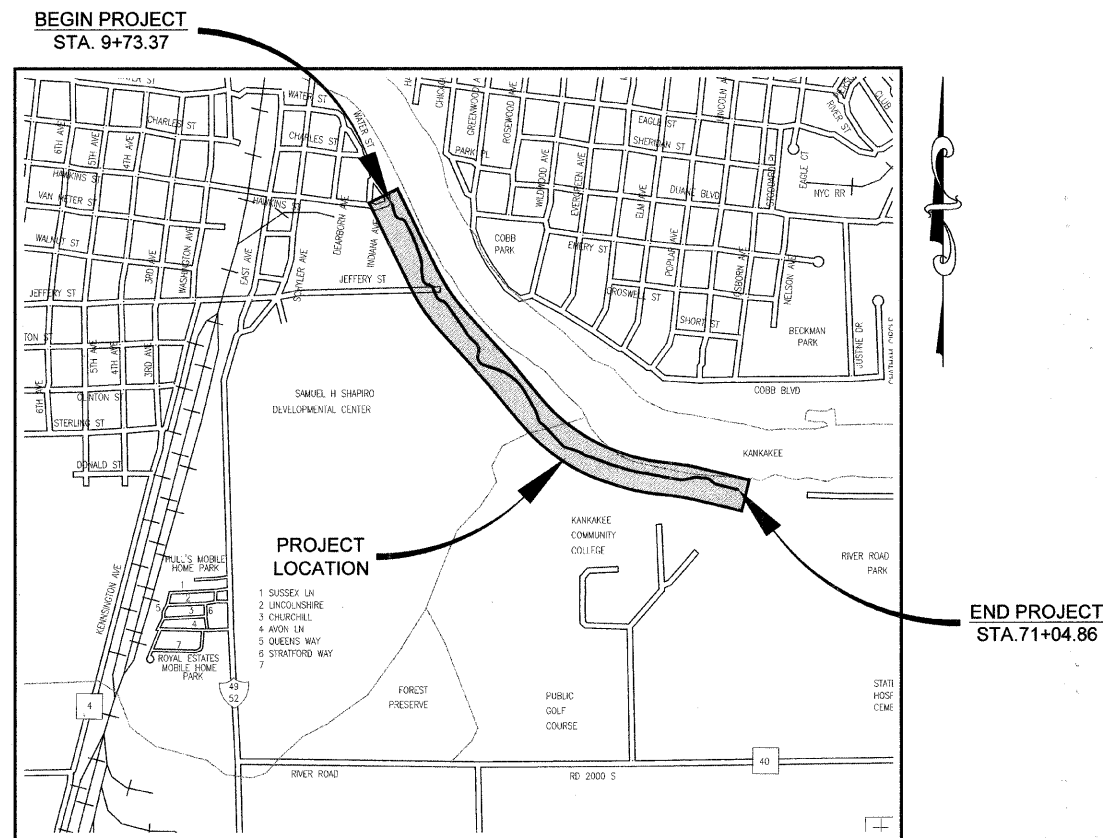
- 1 COVER SHEET, INDEX OF SHEETS & STANDARDS
- 2 GENERAL NOTES, PAVEMENT DESIGN & LEGEND
- 3 SUMMARY OF QUANTITIES
- 4 TYPICAL ROADWAY CROSS SECTIONS
- 5 SCHEDULE OF QUANTITIES
- 6-11 PLAN AND PROFILE
- 12-13 STORM WATER POLLUTION PREVENTION PLAN
- 14 STORM WATER POLLUTION PREVENTION DETAILS
- 15-16 STRIPING AND SIGNAGE PLAN
- 17 BRIDGE DETAILS
- 18 RAILING DETAILS

STATE OF ILLINOIS
 DEPARTMENT OF TRANSPORTATION
 DIVISION OF HIGHWAYS
**PLANS FOR PROPOSED
 IMPROVEMENTS TO TRAIL**

CITY OF KANKAKEE
 RIVERFRONT TRAIL PHASE 1
 SECTION 06-00001-00-BT
 PROJECT NO. HPP-4101(003)
 JOB NO. C-93-100-09

STANDARDS

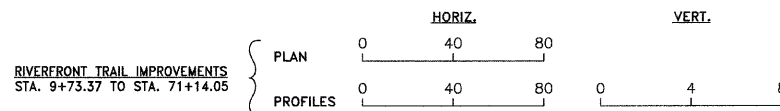
- 000001-05 STANDARD SYMBOLS, ABBREVIATIONS AND PATTERNS
- 280001-04 TEMPORARY EROSION CONTROL SYSTEMS
- 424001-05 CURB RAMPS FOR SIDEWALKS
- 664001-02 CHAIN LINK FENCE
- 701901-01 TRAFFIC CONTROL DEVICES
- 720001-01 SIGN PANEL MOUNTING DETAILS
- 720006-02 SIGN PANEL ERECTION DETAILS
- 720011-01 METAL POSTS FOR SIGNS, MARKERS, AND DELINEATORS
- 729001-01 APPLICATIONS OF TYPE 'A' AND 'B' METAL POSTS (FOR SIGNS & MARKERS)
- 780001-02 TYPICAL PAVEMENT MARKINGS



LOCATION MAP
NOT TO SCALE

GROSS LENGTH OF IMPROVEMENT = 6131.49 FEET = 1.161 MILES
 NET LENGTH OF IMPROVEMENT = 6131.49 FEET = 1.161 MILES

STANDARD SCALES



DESIGN DESIGNATION - PATH

DESIGN SPEED = 20 MPH
 STA. 9+73 TO STA. 71+04
 2009 ADT = 20 PEDS 0 BIKES
 DESIGN 2029 ADT = 50 PEDS 150 BIKES
 SEE SHEET 2 FOR PAVEMENT DESIGN



STATE OF ILLINOIS
 DEPARTMENT OF TRANSPORTATION
 DIVISION OF HIGHWAYS

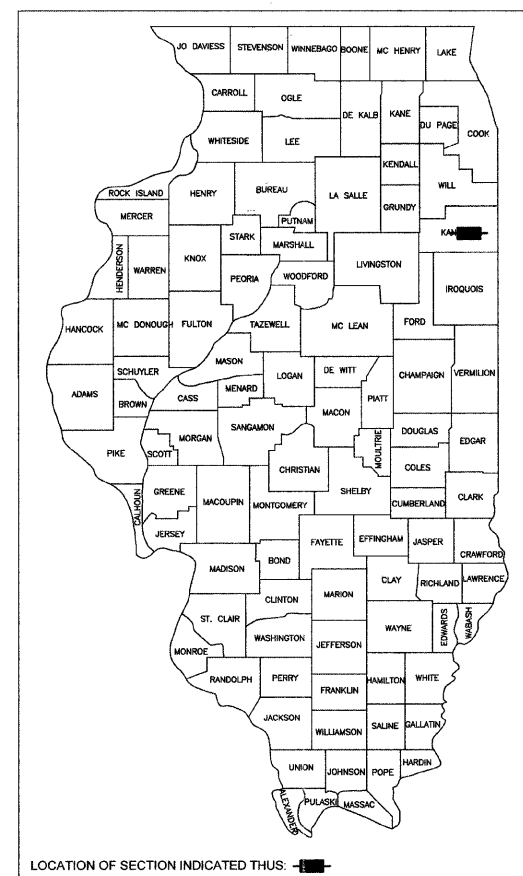
APPROVED: *David E. Kie* 3-16-09 20 09
 MAYOR, CITY OF KANKAKEE
 PASSED: *Kenneth R. Long* 4/02/09 20 09
 DISTRICT 3 ENGINEER OF LOCAL ROADS & STREETS
 RELEASING FOR BID BASED ON LIMITED REVIEW: *Mary F. Ryan* 4/02/09 20 09
 DEPUTY DIRECTOR OF HIGHWAYS REGION 2 ENGINEER

Steven R. McBurney 3-16-09
 STEVEN R. MCBURNEY P.E.# 062-058252 DATE
 EXPIRATION DATE OF P.E. LICENSE: 11-30-09

REVISIONS				
NO.	DATE	BY	GENERAL DESCRIPTION	SHEETS CHANGED
1	3/13/09	NRD	PER IDOT REVIEW	ALL

SECTION 06-00001-00-BT		
DATE:	DATE	JOB NO. E07093
SCALE:	N/A	FILE NO.
DRAWN BY:	NRD	SHEET 1
CHECKED BY:	SRM	OF 18

CALL J.U.L.I.E. BEFORE YOU DIG
 (Joint Utility Locating Information For Excavators)
 PH.# 1-800-892-0123



LOCATION OF SECTION INDICATED THIS: [Black Box]

FALL: RFE. SECTION COUNTY TOTAL SHEETS SHEET NO.
 ** KANKAKEE 17 1
 CONTRACT NO. 87390
 FED. ROAD DIST. NO. ILLINOIS FED. AID PROJECT
 **06-00001-00-BT
TYSON ENGINEERING, INC.
 CONSULTING CIVIL ENGINEERS
 LAND SURVEYORS
 DESIGN FIRM LICENSE #184-001136
 367 SOUTH SCHUYLER AVENUE
 KANKAKEE, ILLINOIS 60901
 PHONE (815) 932-7406
 This document and the ideas and designs incorporated herein, as an instrument of professional service, is the property of Tyson Engineering Inc. and is not to be used in whole or in part, for any other project without written authorization of Tyson Engineering Inc.
 Do not scale drawings. Use dimensions only. Contractor shall be responsible for verifying all dimensions.
 Information hereon and herein is confidential.
 REVISIONS

NO.	DATE	BY	DESCRIPTION
1	3/13/09	NRD	PER IDOT REVIEW

COVER SHEET

IMPROVEMENTS TO SERVE
RIVERFRONT TRAIL
 PHASE 1

GENERAL NOTES

THE WORK UNDER THIS CONTRACT CONSISTS OF THE FOLLOWING:

- DATUM USED FOR SURVEY IS U.S.G.S.
- ALL STATIONING IS ALONG CENTERLINE OF PATH, EXCEPT AS OTHERWISE NOTED.
- NO MULTI-UNIT VEHICLES SHALL BE USED ON OR ALONG THE PATH.
- THE THICKNESS OF BITUMINOUS MIXTURES SHOWN ON THE PLANS IS THE NOMINAL THICKNESS. DEVIATION FROM THE NOMINAL THICKNESS WILL BE PERMITTED WHEN SUCH DEVIATIONS OCCUR DUE TO IRREGULARITIES IN THE EXISTING SURFACE OR BASE ON WHICH THE BITUMINOUS MIXTURE IS PLACED.
- EXCEPT AS NOTED IN THE PLANS, PAVEMENT GRADES SHOWN ARE AT THE TOP OF PAVEMENT SURFACES.
- THE ENGINEER SHALL BE THE SOLE JUDGE CONCERNING CURING TIME FOR THE VARIOUS BITUMINOUS LIFTS.
- ONLY THOSE TREES DESIGNATED BY THE ENGINEER OR LISTED IN THE TREE REMOVAL SCHEDULE SHALL BE REMOVED. THE CONTRACTOR WILL PROTECT ALL REMAINING TREES FROM DAMAGE DUE TO HIS OPERATIONS.
- ALL SAWCUTTING OF EXISTING PAVEMENT SHALL BE CONSIDERED INCIDENTAL TO THE CONTRACT. THE MINIMUM SAW CUT DEPTH IN THE PAVEMENT SHALL BE 2 INCHES, UNLESS OTHERWISE SPECIFIED IN A DETAIL IN THE PLANS.
- THE CONTRACTOR SHALL PROVIDE TEMPORARY DRAINAGE.
- ALL REQUIRED SAW CUTTING SHALL BE INCIDENTAL TO THE REMOVAL PAY ITEM INVOLVED.
- FOR NEW CONSTRUCTION, PLACE SIDEWALK RAMPS FOR THE HANDICAPPED (STD 2356) AT ALL LOCATIONS WHERE PROPOSED SIDEWALK ABUTS CURB AT STREET ENTRANCES.
- THE EXISTING ROAD SIGNS THAT INTERFERE WITH CONSTRUCTION SHALL BE REMOVED OR RELOCATED AS DIRECTED BY THE ENGINEER. AFTER THE CONSTRUCTION IS COMPLETED, THE CONTRACTOR SHALL REPLACE THE SIGNS AS DIRECTED BY THE ENGINEER, THIS WORK WILL NOT BE PAID FOR SEPARATELY BUT SHALL BE CONSIDERED INCIDENTAL TO THE CONTRACT AND NO COMPENSATION WILL BE ALLOWED.
- ABANDONED UNDERGROUND UTILITY ITEMS WHICH CONFLICT WITH CONSTRUCTION SHALL BE DISPOSED OUTSIDE THE LIMITS OF THE RIGHT OF WAY ACCORDING TO ARTICLE 202.03 OF THE STANDARD SPECIFICATIONS, AND AS DIRECTED BY THE ENGINEER. THIS WORK WILL NOT BE PAID FOR SEPARATELY BUT SHALL BE CONSIDERED INCIDENTAL TO EARTH EXCAVATION AND NO ADDITIONAL COMPENSATION WILL BE ALLOWED.
- ANY REFERENCE TO A STANDARD IN THESE PLANS SHALL BE INTERPRETED TO MEAN THE EDITION AS INDICATED BY THE SUB-NUMBER LISTED IN THE INDEX OF SHEETS, OR THE COPY OF THE STANDARD INCLUDED IN THESE PLANS.
- THE CONTRACTOR SHALL BE RESPONSIBLE FOR PROTECTING UTILITY PROPERTY FROM CONSTRUCTION OPERATIONS AS OUTLINED IN ARTICLE 107.31 OF THE STANDARD SPECIFICATIONS. THE JULIE NUMBER IS 1-800-892-0123. A MINIMUM OF FORTY EIGHT (48) HOURS ADVANCE NOTICE IS REQUIRED.
- ALL WATER MAINS SHALL BE PROTECTED FROM CONTAMINATION. STATE CODE SECTION 653.119 EXPLAINS THE METHODS OF PROTECTION AND WHEN THEY ARE REQUIRED.
- THERMOPLASTIC PAVEMENT MARKINGS AND PAINT STRIPING QUANTITIES ARE APPROXIMATE ONLY. PAYMENT WILL BE MADE FOR ACTUAL QUANTITIES USED AS MEASURED IN THE FIELD.
- THE FOLLOWING UTILITY COMPANIES HAVE UTILITIES WITHIN THE LIMITS OF CONSTRUCTION. ADJUSTMENT OF UTILITY LOCATIONS WILL BE MADE BY THE OWNER, UNLESS OTHERWISE NOTED ON THE PLANS.

LEGEND

- EXIST. POWER POLE
- EXIST. BALLARD
- EXIST. WATER METER
- EXIST. INLET
- EXIST. MANHOLE
- EXIST. TREE/BUSH
- EXIST. CONCRETE FENCE PILLAR
- GRADE
- NEW BALLARD
- NEW SIGN
- NEW SPOT ELEVATION
- EXIST. EDGE OF AGGREGATE
- EXIST. WATERS EDGE
- EXIST. TREE LINE
- EXIST. FENCE
- EXIST. EDGE OF PAVEMENT & SIDEWALK
- EXIST. CURB & GUTTER
- CENTER LINE OF ROAD/PATH
- NEW FENCE
- NEW EASEMENT
- OBJECT DEMOLITION
- NEW BITUMINOUS TRAIL
- REMOVE OBJECT

F.A.U. NO.	SECTION	COUNTY	TOTAL SHEETS	SHEET NO.
*	**	KANKAKEE	17	2

CONTRACT NO. 87390
 FED. ROAD DIST. NO. ILLINOIS FED. AID PROJECT

**06-00001-00-BT

TYSON ENGINEERING, INC.
 CONSULTING CIVIL ENGINEERS
 LAND SURVEYORS
 DESIGN FIRM LICENSE #184-001136
 367 SOUTH SCHUYLER AVENUE
 KANKAKEE, ILLINOIS 60901
 PHONE (815) 932-7406

This document and the ideas and designs incorporated herein, as an instrument of professional service, is the property of Tyson Engineering Inc. and is not to be used in whole or in part, for any other project without written authorization of Tyson Engineering Inc.

Do not scale drawings. Use dimensions only.
 Contractor shall be responsible for verifying all dimensions.
 Information hereon and herein is confidential.

REVISIONS			
NO.	DATE	BY	DESCRIPTION
1	3/13/09	NRD	PER IDOT REVIEW

PAVEMENT DESIGN

RIVERFRONT TRAIL
 STA. 9+73 to STA. 71+04

Shared use path
 D.P. - 20 years
 Design Traffic
 Existing ADT: 20% ped/bike
 Proposed ADT: 50/150 ped/bike
 Critical subgrade Eri: 3ksi

Subgrade support rating: fair
 mixture temperature: 78.5

USE: 3" HMA, 8" AGG

UTILITY	STATUS OF RELOCATION		
		DATE	
POWER COMMONWEALTH EDISON CO. 2500 SOUTH GOVERNORS HIGHWAY UNIVERSITY PARK, IL 60466	PRELIMINARY PLANS SET	3/11/08	NONE REQUIRED
	FINAL PLAN SET	_____	
TELEPHONE AT&T 65 WEST WEBSTER JOLIET, IL 60431	PRELIMINARY PLANS SET	3/11/08	NONE REQUIRED
	FINAL PLAN SET	_____	
CABLE TV COMCAST 17700 HOFFMAN WAY HOMWOOD, IL 60430	PRELIMINARY PLANS SET	3/11/08	NONE REQUIRED
	FINAL PLAN SET	_____	
GAS NORTHERN ILLINOIS GAS CO. 1844 FERRY ROAD NAPERVILLE, IL 60563	PRELIMINARY PLANS SET	3/11/08	NONE REQUIRED
	FINAL PLAN SET	_____	
WATER AQUA ILLINOIS 1000 SOUTH SCHUYLER AVE. KANKAKEE, IL 60901	PRELIMINARY PLANS SET	3/11/08	NONE REQUIRED
	FINAL PLAN SET	_____	

	HMA Level Binder	HMA Surface
PG Grade	PG58-22	PG58-22
Max % RAP Allowable**	30%	30%
Design Air Voids	3.0% @ N30	3.0% @ N30L
Mixture Composition	IL 9.5L	IL 9.5L
Friction Aggregate	-	Mixture C
Density Test Method	CORES	CORES

** Material shall be compacted to 93.0 - 97.4 percent of the maximum theoretical density, except that when placed as first lift on an unimproved subgrade the minimum percent compaction shall be 92.0 percent. The maximum theoretical density shall be determined from the moving average as specified in the QC/QA Specification.

** When more than 20% RAP is used, a softer asphalt binder (PG58-22) may be required as determined by the Engineer.

GENERAL NOTES
 PAVEMENT DESIGN
 LEGEND

IMPROVEMENTS TO SERVE
 RIVERFRONT TRAIL
 PHASE 1

SECTION 06-00001-00-BT		
DATE:	DATE	JOB NO. E07093
SCALE:	N/A	FILE NO.
DRAWN BY:	NRD	SHEET 2
CHECKED BY:	SRM	OF 18

TYSON ENGINEERING, INC.
 CONSULTING CIVIL ENGINEERS
 AND SURVEYORS
 DESIGN FIRM LICENSE # 161-001136
 367 SOUTH SCHUYLER AVENUE
 KANKAKEE, ILLINOIS 60901
 PHONE (815) 932-7406

This document and the ideas and designs incorporated herein, as an instrument of professional service, is the property of Tyson Engineering Inc. and is not to be used in whole or in part, for any other project without written authorization of Tyson Engineering Inc.

Do not scale drawings. Use dimensions only. Contractor shall be responsible for verifying all dimensions.

Information hereon and herein is confidential.

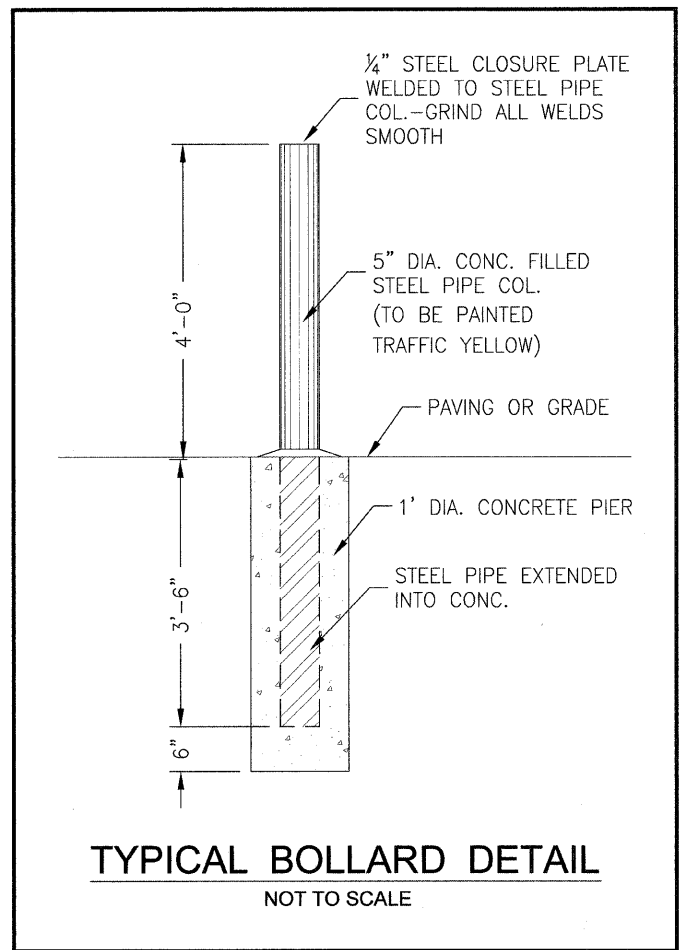
REVISIONS			
NO.	DATE	BY	DESCRIPTION
1	3/13/09	NRD	PER IDOT REVIEW

SUMMARY OF QUANTITIES

IMPROVEMENTS TO SERVE RIVERFRONT TRAIL PHASE 1

SECTION 06-00001-00-BT

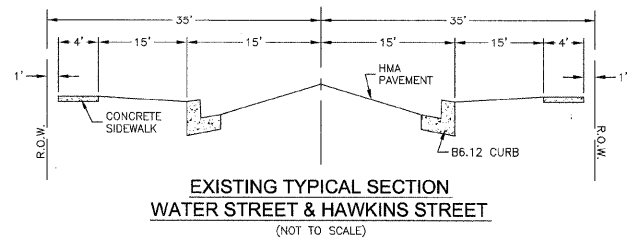
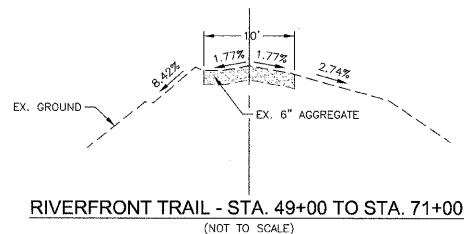
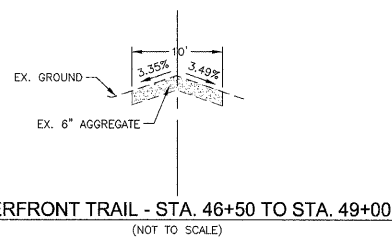
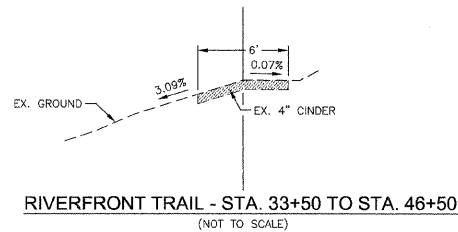
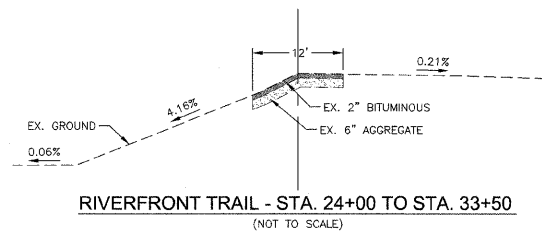
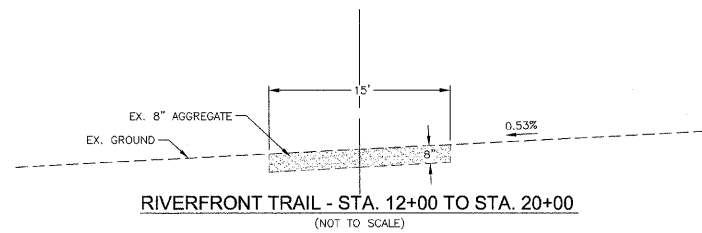
DATE:	DATE:	JOB NO. E07093
SCALE:	N/A	FILE NO.
DRAWN BY:	NRD	SHEET 3
CHECKED BY:	SRM	OF 18



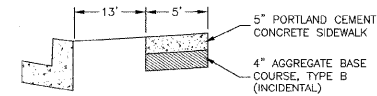
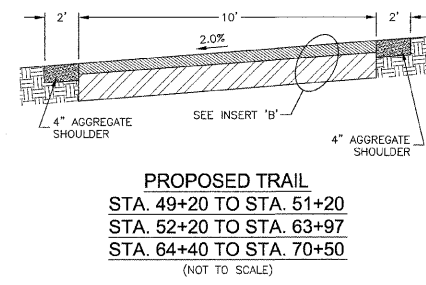
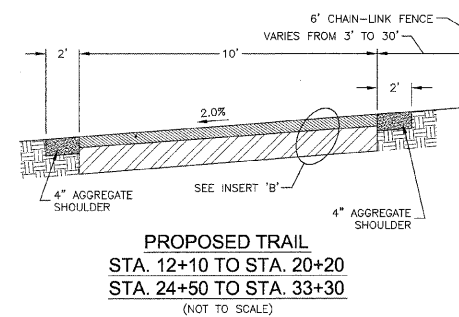
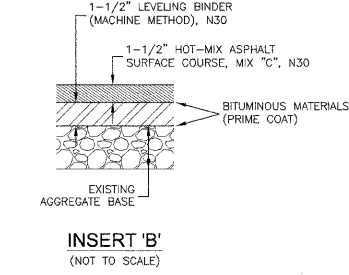
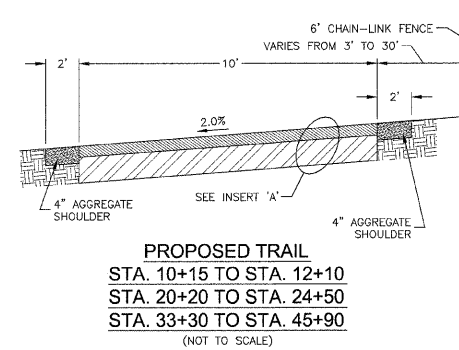
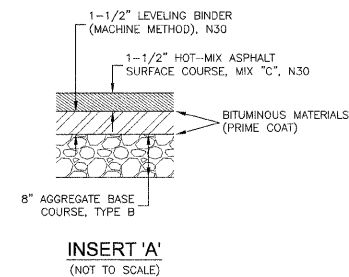
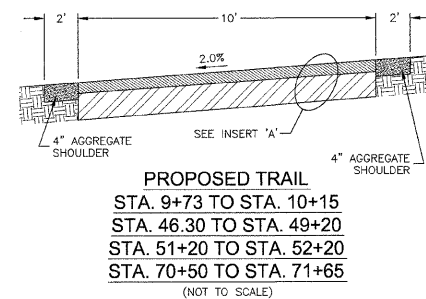
SUMMARY OF QUANTITIES			
PAY ITEM NUMBER	Item	Plan Quantity	Unit
20100110	Tree Removal (6-15 Units Diameter)	244	UNIT
20100210	Tree Removal (Over 15 Units Diameter)	78	UNIT
20200100	Earth Excavation	1,022	CU YD
21101615	Topsoil Furnish and Place, 4"	1,407	SQ YD
25000115	Seeding, Class 1B	0.35	ACRE
25100115	Mulch, Method 2	0.35	ACRE
28000400	Perimeter Erosion Barrier	6,132	FOOT
28000500	Inlet and Pipe Protection	1	EACH
28100107	Stone Riprap, Class A4	22	SQ YD
28200200	Filter Fabric	22	SQ YD
35102000	Aggregate Base Course, Type B 8"	2,636	SQ YD
35800100	Preparation of Base	4,086	SQ YD
35800200	Aggregate Base Repair	414	TON
40600100	Bituminous Materials (Prime Coat)	4,034	GALLON
40600615	Leveling Binder (Machine Method), N30	579	TON
40603305	Hot-Mix Asphalt Surface Course, Mix "C", N30	579	TON
42400200	Portland Cement Concrete Sidewalk 5 inch	1,080	SQ FT
42400800	Detectable Warnings	36	SQ FT
48101498	Aggregate shoulders, Type, B 4"	2,688	SQ YD
50900605	Handrail Removal	80	FOOT
50901720	Bicycle Railing	194	FOOT
66400305	Chain Link Fence, 6'	3,510	FOOT
66408200	Chain Link Gates, 6' x 24' Double	3	EACH
66410300	Chain Link Fence Removal	285	FOOT
67100100	Mobilization	1.00	L SUM
70101700	Traffic Control and Protection	1.00	L SUM
72000100	Sign Panel - Type 1	14.75	SQ FT
72900110	Metal Post - Type A	5	EACH
78000200	Thermoplastic Pavement Marking - Line 4"	1,530.0	FOOT
78000600	Thermoplastic Pavement Marking - Line 12"	10	FOOT
A2001316	Tree, Acer Saccharinum (Silver Maple) 2" Caliper, Balled and Burlapped	6	EACH
X0322671	Stabilized Construction Entrance	125	SQ YD
X0325279	Class SI Concrete (miscellaneous)	3	CU YD
X0325305	Structural Repair of Concrete (depth equal to or less than 5 inches)	18	SQ FT
X0350800	Bollards	2	EACH

* See Special Provisions
 ** RC-70 shall be used between HMA layers and MC-30 on Aggregate
 Δ Specialty Item
 + No RAP is allowed
 Construction Code: Y-047

**TYPICAL EXISTING ROADWAY
CROSS SECTIONS**



**TYPICAL PROPOSED ROADWAY
CROSS SECTIONS**



FAU. NO.	SECTION	COUNTY	TOTAL SHEETS	SHEET NO.								
*	**	KANKAKEE	17	4								
CONTRACT NO. 87390												
FED. ROAD DIST. NO.	ILLINOIS	FED. AID PROJECT										
**06-00001-00-BT												
<p>TYSON ENGINEERING, INC. CONSULTING CIVIL ENGINEERS LAND SURVEYORS DESIGN FIRM LICENSE #184-001135 367 SOUTH SCHUYLER AVENUE KANKAKEE, ILLINOIS 60901 PHONE (815) 932-7406</p>												
<p>This document and the ideas and designs incorporated herein, as an instrument of professional service, is the property of Tyson Engineering Inc. and is not to be used in whole or in part, for any other project without written authorization of Tyson Engineering Inc.</p> <p>Do not scale drawings. Use dimensions only. Contractor shall be responsible for verifying all dimensions.</p> <p>Information herein and hereon is confidential.</p>												
<p>REVISIONS</p> <table border="1"> <thead> <tr> <th>NO.</th> <th>DATE</th> <th>BY</th> <th>DESCRIPTION</th> </tr> </thead> <tbody> <tr> <td>1</td> <td>3/13/09</td> <td>NRD</td> <td>PER IDOT REVIEW</td> </tr> </tbody> </table>					NO.	DATE	BY	DESCRIPTION	1	3/13/09	NRD	PER IDOT REVIEW
NO.	DATE	BY	DESCRIPTION									
1	3/13/09	NRD	PER IDOT REVIEW									


TYPICAL ROADWAY
CROSS SECTIONS

IMPROVEMENTS TO SERVE
RIVERFRONT TRAIL
PHASE 1

SECTION
06-00001-00-BT

DATE:	DATE	JOB NO. E07093
SCALE:	N/A	FILE NO.
DRAWN BY:	NRD	SHEET 4
CHECKED BY:	SRM	OF 18

**06-00001-00-BT



TYSON ENGINEERING, INC.
 CONSULTING CIVIL ENGINEERS
 LAND SURVEYORS
 DESIGN FIRM LICENSE #184-001136

367 SOUTH SCHUYLER AVENUE
 KANKAKEE, ILLINOIS 60901
 PHONE (815) 932-7406

This document and the ideas and designs incorporated herein, as an instrument of professional service, is the property of Tyson Engineering Inc. and is not to be used in whole or in part, for any other project without written authorization of Tyson Engineering Inc.

Do not scale drawings. Use dimensions only. Contractor shall be responsible for verifying all dimensions.

Information hereon and herein is confidential.

REVISIONS			
NO.	DATE	BY	DESCRIPTION
1	3/13/09	NRD	PER IDOT REVIEW

SCHEDULE OF QUANTITIES

IMPROVEMENTS TO SERVE RIVERFRONT TRAIL PHASE 1

PROJECT: SECTION 06-00001-00-BT

DATE:	DATE	JOB NO. E07093
SCALE:	N/A	FILE NO.
DRAWN BY:	NRD	SHEET 5
CHECKED BY:	SRM	OF 18

PAVEMENT SCHEDULE							
LOCATION	AGGREGATE BASE COURSE TYPE B 8" (SQ YD)	PREPARATION OF BASE (SQ YD)	AGGREGATE BASE REPAIR (TON)	AGGREGATE SHOULDERS TYPE A 4" (SQ YD)	HOT-MIX ASPHALT SURFACE COURSE MIX "C", N30 (TON)	LEVELING BINDER (MACHINE METHOD), N30 (TON)	BITUMINOUS MATERIALS (PRIME COAT) (GALLON)
STA 9+73 TO 10+15	47			19	4	4	28
STA 10+15 TO 12+10	217			87	19	19	130
STA 12+10 TO 20+20		900	91	360	78	78	540
STA 20+20 TO 24+50	478			191	41	41	287
STA 24+50 TO 33+30		978	99	391	84	84	587
STA 33+30 TO 45+90	1400			560	121	121	840
STA 46+30 TO 49+20	322			129	27	27	193
STA 49+20 TO 51+20		222	23	89	19	19	133
STA 51+20 TO 52+20	111			44	10	10	67
STA 52+20 TO 63+97		1308	132	523	113	113	785
STA 64+40 TO 70+50		678	69	271	58	58	407
STA 70+50 TO 71+05	61			24	5	5	37
TOTAL	2636	4086	414	2688	579	579	4,034

TREES SCHEDULE			
LOCATION	REMOVAL (6 TO 15 UNITS) (UNITS)	REMOVAL (OVER 15 UNITS) (UNITS)	SILVER MAPLE 2" CALIPER (EACH)
STA 10+45 - 2 LT	6		
STA 10+72 - 2 RT	8		
STA 10+81 - 4 RT	12		
STA 10+89 - 2 RT	12		
STA 10+90 - 5 RT	8		
STA 10+92 - 1 RT	6		
STA 10+99 - 5 LT	6		
STA 11+16 - 1 RT	6		
STA 11+18 - 1 RT	12		
STA 11+23 - 2 RT	8		
STA 11+24 - 3 RT	8		
STA 11+25 - 1 RT	8		
STA 11+25 - 5 RT	8		
STA 11+26 - 2 LT	8		
STA 11+44 - 1 RT	10		
STA 11+45 - 6 RT	12		
STA 11+47 - 1 RT	12		
STA 11+57 - 2 RT	6		
STA 11+58 - 3 RT	6		
STA 11+66 - 5 LT	6		
STA 11+70 - 1 RT	8		
STA 11+70 - 7 LT	8		
STA 11+71	10		
STA 11+71 - 2 LT	8		
STA 11+74 - 6 LT	10		
STA 11+77 - 3 RT	12		
STA 11+80	10		
STA 11+83 - 6 LT	10		
STA 42+30 - 4 RT		18	
STA 51+52 - 6 RT		36	
STA 65+28 - 3 RT		24	
STA 68+00 - 15 RT			1
STA 68+50 - 15 RT			1
STA 69+00 - 15 RT			1
STA 69+50 - 15 RT			1
STA 70+25 - 15 LT			1
STA 70+50 - 15 RT			1
TOTAL	244	78	6

EARTH EXCAVATION SCHEDULE	
LOCATION	EARTH EXCAVATION (CU YD)
WATER STREET SIDEWALK	27
STA 9+73 TO 10+15	18
STA 10+15 TO 12+10	82
STA 20+20 TO 24+50	180
STA 33+30 TO 45+90	529
STA 46+30 TO 49+20	121
STA 51+20 TO 52+20	42
STA 70+50 TO 71+05	23
TOTAL	1022

FENCE AND RAILING SCHEDULE			
LOCATION	BICYCLE RAILING (FOOT)	CHAIN LINK FENCE 6' (FOOT)	CHAIN LINK GATES 6'x24' DOUBLE (EACH)
STA 10+15 TO 20+80 - RT		1065	
STA 20+90 - RT			1
STA 21+00 TO 22+30 - RT		130	
STA 22+40 - RT			1
STA 22+50 TO 32+85 - RT		1015	
STA 32+75 - RT			1
STA 32+90 TO 45+90 - RT		1300	
STA 44+30 TO 44+64 - LT	34		
STA 45+80 TO 46+40 - RT	60		
STA 45+80 TO 46+40 - LT	60		
STA 63+87 TO 63+97 - RT	10		
STA 63+87 TO 63+97 - LT	10		
STA 64+40 TO 64+50 - RT	10		
STA 64+40 TO 64+50 - LT	10		
TOTAL	194	3510	3

REMOVALS SCHEDULE		
LOCATION	HANDRAIL REMOVAL (FOOT)	CHAIN LINK FENCE REMOVAL (FOOT)
STA 10+20		30
STA 20+75		40
STA 22+00		50
STA 44+25 TO 45+90 RT		165
STA 45+90 TO 46+30 RT	40	
STA 45+90 TO 46+30 LT	40	
TOTAL	80	285

MISCELLANEOUS SCHEDULE			
LOCATION	BOLLARDS (EACH)	STRUCTURAL REPAIR OF CONCRETE (DEPTH EQUAL TO OR LESS THAN 5 INCHES) (SQ FT)	CLASS SI CONCRETE (CU YD)
STA 9+78	1		
STA 44+50		6	3
STA 46+10		12	
STA 71+00	1		
TOTAL	2	18	3

SIGNS SCHEDULE			
LOCATION	SIGN PANEL TYPE 1 (SQ FT)	METAL POST TYPE A (EACH)	DESCRIPTION
STA 9+78 - 8 LT	2.25	1	STOP SIGN (R1-1) (18"X18")
STA 9+78 - 8 RT	4	1	NO MOTOR VEHICLES (R5-3) (24"X24")
STA 10+00 - 8 LT	2.25	1	STOP AHEAD SIGN (W3-1) (18"X18")
STA 71+00 - 8 LT	4	1	NO MOTOR VEHICLES (R5-3) (24"X24")
STA 70+00 - 8 RT	2.25	1	STOP SIGN (R1-1) (18"X18")
TOTAL	14.75	5	

EROSION CONTROL SCHEDULE					
LOCATION	PERIMETER EROSION BARRIER (FOOT)	INLET AND PIPE PROTECTION (EACH)	STONE RIPRAP CLASS A4 (SQ YD)	FILTER FABRIC (SQ YD)	STABILIZED CONSTRUCTION ENTRANCE (SQ YD)
STA 9+73					125
STA 9+73 TO 71+05	6132				
STA 52+50		1			
STA 44+50			22	22	
TOTAL	6132	1	22	22	125

PAVEMENT MARKING SCHEDULE			
LOCATION	THERMOPLASTIC PAVEMENT MARKING LINE 4" (FOOT)	THERMOPLASTIC PAVEMENT MARKING LINE 12" (FOOT)	DESCRIPTION
STA 9+78 TO 71+00	1530		SKIP DASH YELLOW
STA 9+78		5	STOP BAR WHITE
STA 71+00		5	STOP BAR WHITE
TOTAL	1530	10	

SIDEWALK SCHEDULE		
LOCATION	PORTLAND CEMENT CONCRETE SIDEWALK 5" (SQ FT)	DETECTABLE WARNINGS (SQ FT)
ALONG WATER STREET	980	
STA 9+73 TO 9+78	50	18
STA 71+00 TO 71+05	50	18
TOTAL	1080	36

TURF ESTABLISHMENT SCHEDULE			
LOCATION	TOPSOIL 4" (SQ YD)	SEEDING CLASS 1B (ACRE)	MULCH METHOD 2 (ACRE)
WATER STREET SIDEWALK	44	0.05	0.05
STA 9+73 TO 71+05	1363	0.30	0.30
TOTAL	1407.00	0.35	0.35

TYSON ENGINEERING, INC.
 CONSULTING CIVIL ENGINEERS
 LAND SURVEYORS
 DESIGN FIRM LICENSE #19-001136
 367 SOUTH SCHUYLER AVENUE
 KANKAKEE, ILLINOIS 60901
 PHONE (815) 932-7406

This document and the ideas and designs incorporated herein, as an instrument of professional service, is the property of Tyson Engineering Inc. and is not to be used in whole or in part, for any other project without written authorization of Tyson Engineering Inc.

Do not scale drawings. Use dimensions only.
 Contractor shall be responsible for verifying all dimensions.

Information herein and herein is confidential.

REVISIONS

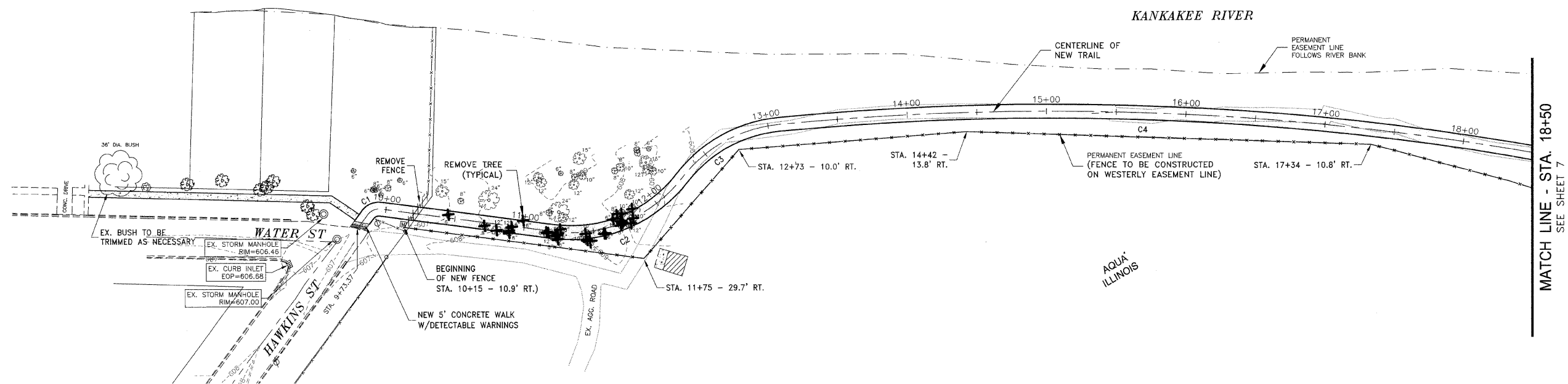
NO.	DATE	BY	DESCRIPTION
1	3/13/09	NRD	PER IDOT REVIEW

PLAN & PROFILE
 STA. 9+73.37 TO
 STA. 18+50

IMPROVEMENTS TO SERVE RIVERFRONT TRAIL PHASE 1

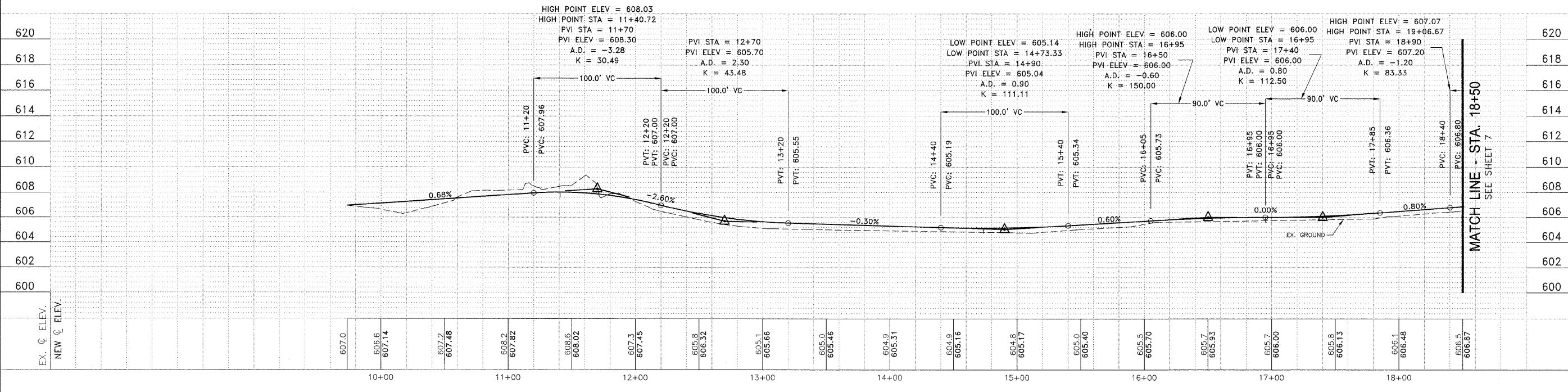
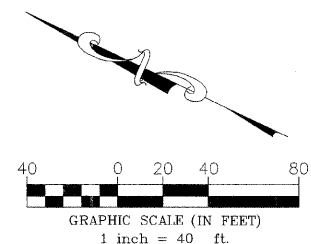
SECTION 06-00001-00-BT

DATE: DATE JOB NO. E07093
 SCALE: HORZ.: 1"=40' FILE NO.
 VERT.: 1"=4'
 DRAWN BY: NRD SHEET
 CHECKED BY: SRM SHEET 6
 OF 18

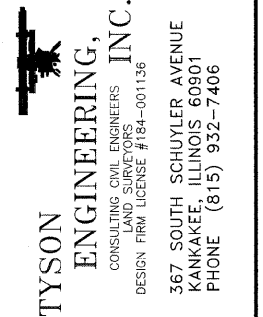


CURVE TABLE

CURVE	LENGTH	RADIUS	TANGENT	DELTA ANGLE	P.I. STATION
C1	10.63	10.00	5.88	60°52'44"	9+91.59
C2	104.84	100.00	57.82	60°04'13"	11+78.74
C3	82.34	100.00	43.67	47°10'43"	12+89.43
C4	554.58	2000.00	279.06	15°53'15"	15+87.18
C5	60.79	150.00	30.82	23°13'17"	18+93.50
C6	58.15	200.00	29.28	16°39'35"	19+52.75
C7	115.66	100.00	65.27	65°16'05"	20+53.03
C8	88.34	100.00	47.28	50°36'45"	21+30.89
C9	94.79	100.00	51.30	54°18'41"	23+67.53
C10	72.53	100.00	37.94	41°33'16"	24+48.96
C11	78.72	500.00	39.44	9°01'15"	28+66.88
C12	72.16	200.00	36.48	20°40'19"	29+42.64
C13	148.68	125.00	84.55	68°08'57"	31+70.64
C14	164.29	101.00	106.80	93°12'00"	33+41.57
C15	439.15	600.00	229.93	41°56'09"	38+17.30
C16	136.97	450.00	69.02	17°26'24"	43+24.52
C17	83.84	110.00	44.07	43°40'07"	44+36.54
C18	51.10	220.00	25.67	13°18'34"	45+01.98
C19	58.65	100.00	30.20	33°36'22"	48+73.19
C20	142.85	300.00	71.58	9°05'40"	49+73.22
C21	66.34	400.00	33.26	9°30'10"	50+77.75
C22	56.48	227.85	28.39	14°12'11"	51+42.72
C23	51.89	300.00	26.01	9°54'39"	54+24.63
C24	53.69	200.00	27.01	15°22'53"	54+77.52
C25	51.80	450.00	25.93	6°35'44"	56+12.99
C26	50.98	700.00	25.50	4°10'22"	56+74.31
C27	57.03	250.00	28.64	13°04'16"	58+26.72
C28	52.25	200.00	26.27	14°58'07"	58+94.94
C29	79.59	500.00	39.88	9°07'13"	59+73.15
C30	56.22	1200.00	28.12	2°41'04"	61+01.33
C31	94.63	300.00	47.71	18°04'24"	63+59.67
C32	50.59	400.00	25.33	7°14'47"	64+55.47
C33	51.96	160.00	26.21	18°36'30"	65+47.83
C34	85.35	100.00	45.47	48°54'02"	67+14.52
C35	68.67	100.00	35.75	39°20'36"	67+90.15



P:\2007\ED7093\dwg\ED7093.dwg 3/13/09 2:06:38 PM CDT



This document and the ideas and designs incorporated herein, as an instrument of professional service, is the property of Tyson Engineering, Inc. and is not to be used in whole or in part, for any other project without written authorization of Tyson Engineering, Inc.

Do not scale drawings. Use dimensions only. Contractor shall be responsible for verifying all dimensions.

Information herein and herein is confidential.

REVISIONS

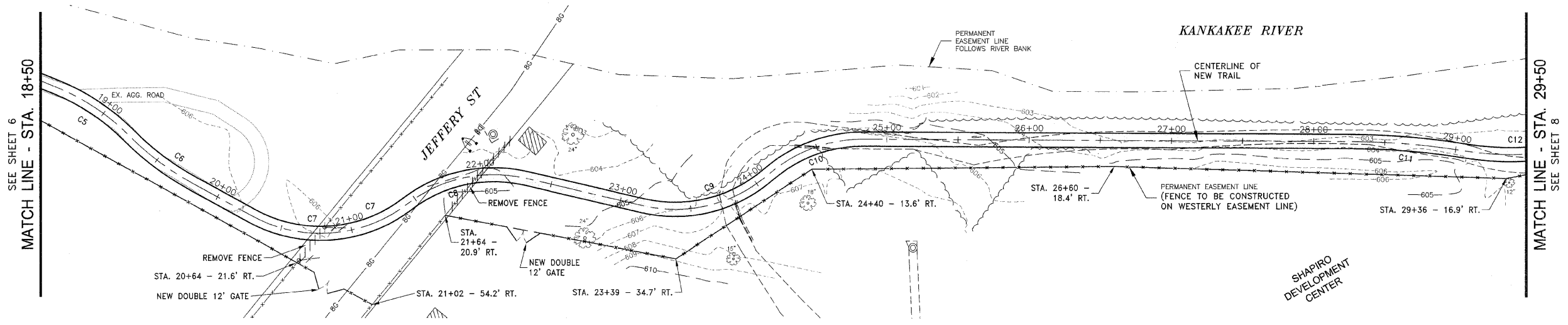
NO.	DATE	BY	DESCRIPTION
1	3/13/09	NRD	PER IDOT REVIEW

PLAN & PROFILE
STA. 18+50 TO
STA. 29+50

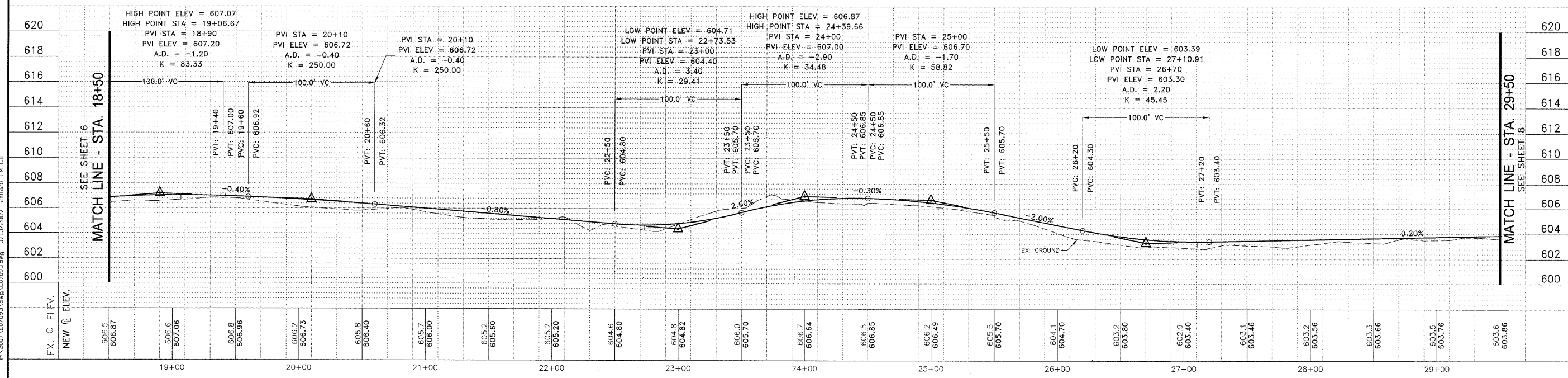
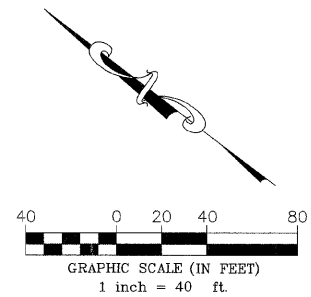
IMPROVEMENTS TO SERVE RIVERFRONT TRAIL PHASE 1

SECTION 06-00001-00-BT

DATE:	DATE	JOB NO. E07093
SCALE:	HORZ.: 1"=40' VERT.: 1"=4'	FILE NO.
DRAWN BY:	NRD	SHEET 7
CHECKED BY:	SRM	OF 18



CURVE	LENGTH	RADIUS	TANGENT	DELTA ANGLE	P.I. STATION
C1	10.63	10.00	5.88	60°52'44"	9+91.59
C2	104.84	100.00	57.82	60°04'13"	11+78.74
C3	82.34	100.00	43.67	47°10'43"	12+68.43
C4	564.58	2000.00	278.08	15°53'15"	15+87.18
C5	60.79	150.00	30.82	23°13'17"	18+93.50
C6	58.15	200.00	29.28	16°39'35"	19+52.75
C7	115.66	100.00	65.27	66°16'05"	20+93.03
C8	88.34	100.00	47.28	50°36'45"	21+90.69
C9	94.79	100.00	51.30	64°18'41"	23+67.53
C10	72.53	100.00	37.94	41°33'16"	24+48.96
C11	78.72	500.00	39.44	9°01'15"	28+66.88
C12	72.16	200.00	36.48	20°40'19"	29+42.64
C13	148.68	125.00	84.55	68°08'57"	31+70.84
C14	164.29	101.00	106.80	93°12'00"	33+41.57
C15	439.15	600.00	229.93	41°56'09"	38+17.30
C16	136.97	450.00	69.02	17°26'24"	43+24.52
C17	83.84	110.00	44.07	43°40'07"	44+36.54
C18	51.10	220.00	25.67	13°18'34"	45+01.98
C19	58.65	100.00	30.20	33°36'22"	48+73.19
C20	142.85	900.00	71.58	9°05'40"	49+73.22
C21	66.34	400.00	33.28	9°30'10"	50+77.75
C22	56.48	227.85	28.39	14°12'11"	51+42.72
C23	51.89	300.00	26.01	9°54'39"	54+24.63
C24	53.69	200.00	27.01	15°22'53"	54+77.52
C25	51.80	450.00	25.93	8°35'44"	56+12.99
C26	50.98	700.00	25.50	4°10'22"	56+74.31
C27	57.03	250.00	28.64	13°04'16"	58+26.72
C28	52.25	200.00	26.27	14°58'07"	58+94.94
C29	79.59	500.00	39.88	9°07'13"	59+73.15
C30	56.22	1200.00	28.12	2°41'04"	61+01.33
C31	94.63	300.00	47.71	18°04'24"	63+59.67
C32	50.59	400.00	25.33	7°14'47"	64+65.47
C33	51.98	160.00	26.21	18°36'30"	65+47.63
C34	85.35	100.00	45.47	48°54'02"	67+14.52
C35	68.67	100.00	35.75	39°20'36"	67+90.15



P:\2007\107093\107093.dwg 3/13/2009 2:06:28 PM CDT

TYSON ENGINEERING, INC.
 CONSULTING CIVIL ENGINEERS AND SURVEYORS
 DESIGN FIRM LICENSE #164-001136
 367 SOUTH SCHUYLER AVENUE
 KANKAKEE, ILLINOIS 60901
 PHONE (815) 932-7406

This document and the ideas and designs incorporated herein, as an instrument of professional service, is the property of Tyson Engineering Inc. and is not to be used in whole or in part, for any other project without written authorization of Tyson Engineering Inc.

Do not scale drawings. Use dimensions only. Contractor shall be responsible for verifying all dimensions.

Information hereon and herein is confidential.

REVISIONS

NO.	DATE	BY	DESCRIPTION
1	3/13/09	NRD	PER IDGT REVIEW

PLAN & PROFILE
 STA. 29+50 TO STA. 40+50

IMPROVEMENTS TO SERVE RIVERFRONT TRAIL PHASE 1

PROJECT: 06-00001-00-BT

SECTION

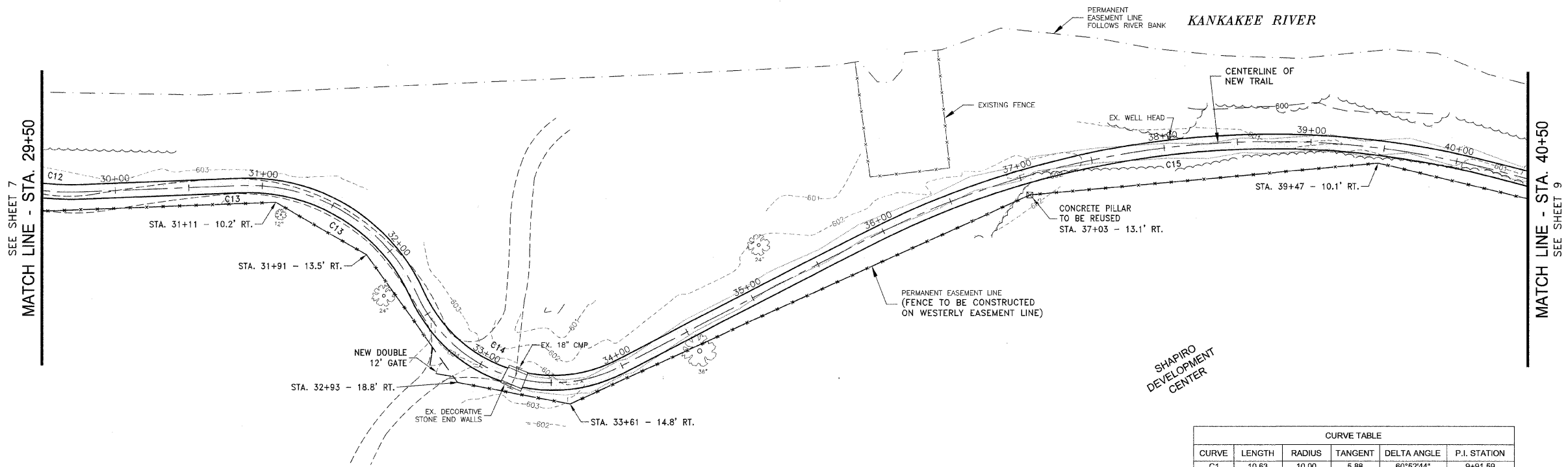
DATE: DATE JOB NO. E07093

SCALE: HORZ.: 1"=40' FILE NO.

VERT.: 1"=4'

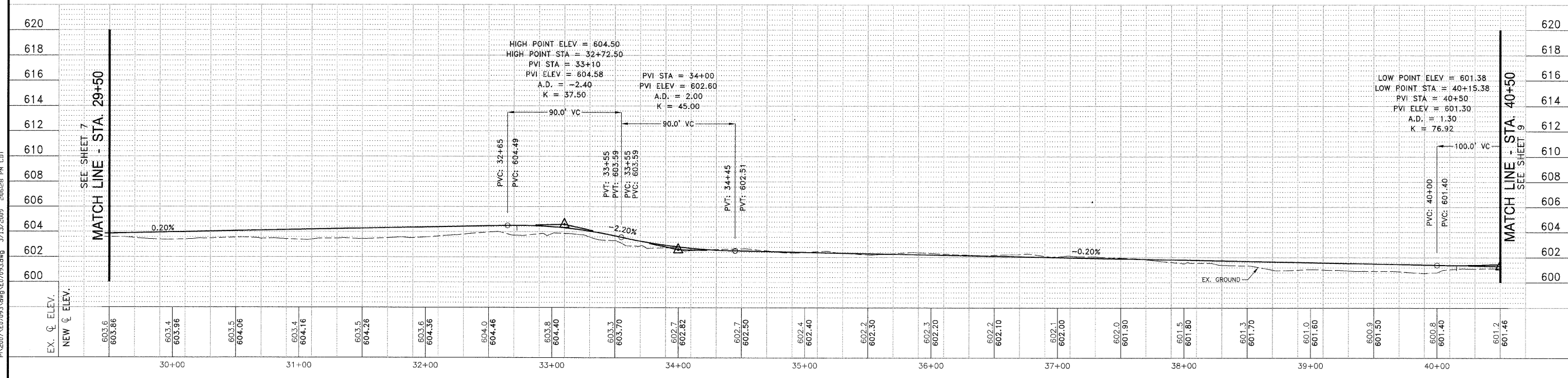
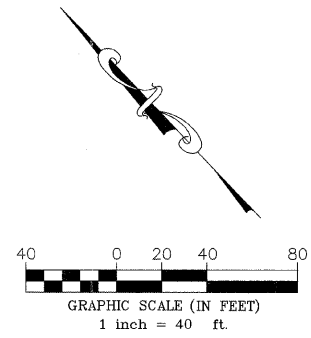
DRAWN BY: NRD SHEET 8

CHECKED BY: SRM OF 18



CURVE TABLE

CURVE	LENGTH	RADIUS	TANGENT	DELTA ANGLE	P.I. STATION
C1	10.63	10.00	5.88	60°52'44"	9+91.59
C2	104.84	100.00	57.82	60°04'13"	11+78.74
C3	82.34	100.00	43.67	47°10'43"	12+69.43
C4	554.58	2000.00	279.08	15°53'15"	15+87.18
C5	60.79	150.00	30.82	23°13'17"	18+93.50
C6	58.15	200.00	29.28	16°39'35"	19+52.75
C7	115.66	100.00	65.27	66°16'05"	20+93.03
C8	88.34	100.00	47.28	50°36'45"	21+90.69
C9	94.79	100.00	51.30	54°18'41"	23+67.53
C10	72.53	100.00	37.94	41°33'16"	24+48.96
C11	78.72	500.00	39.44	9°01'15"	28+66.88
C12	72.16	200.00	36.48	20°40'19"	29+42.64
C13	148.88	125.00	84.55	89°09'57"	31+70.64
C14	164.29	101.00	106.80	93°12'00"	33+41.57
C15	439.15	600.00	229.93	41°56'09"	38+17.30
C16	136.97	450.00	69.02	17°26'24"	43+24.52
C17	83.84	110.00	44.07	43°40'07"	44+36.54
C18	51.10	220.00	25.67	13°18'34"	46+01.98
C19	58.85	100.00	30.20	33°36'22"	48+73.19
C20	142.85	900.00	71.58	9°05'40"	49+73.22
C21	66.34	400.00	33.25	9°30'10"	50+77.75
C22	56.48	227.85	28.39	14°12'11"	51+42.72
C23	51.89	300.00	26.01	9°54'39"	54+24.63
C24	53.69	200.00	27.01	15°22'53"	54+77.32
C25	51.90	450.00	25.93	6°35'44"	58+12.98
C26	50.98	700.00	25.50	4°10'22"	58+74.31
C27	57.03	250.00	28.64	13°04'16"	58+26.72
C28	52.25	200.00	26.27	14°58'07"	58+94.94
C29	79.59	500.00	39.88	9°07'13"	59+73.15
C30	56.22	1200.00	28.12	2°41'04"	61+01.33
C31	94.63	300.00	47.71	18°04'24"	63+59.67
C32	50.59	400.00	25.33	7°14'47"	64+65.47
C33	51.96	160.00	26.21	18°36'30"	66+47.63
C34	85.35	100.00	45.47	48°54'02"	67+14.52
C35	68.67	100.00	35.75	39°20'36"	67+90.15



P:\2007\ED07093\dwg\ED07093.dwg 3/13/2009 2:06:28 PM EDT

TYSON ENGINEERING, INC.
 CONSULTING CIVIL ENGINEERS
 367 SOUTH SCHUYLER AVENUE
 KANKAKEE, ILLINOIS 60901
 PHONE (815) 952-7406

This document and the ideas and designs incorporated herein, as an instrument of professional service, is the property of Tyson Engineering Inc. and is not to be used in whole or in part, for any other project without written authorization of Tyson Engineering Inc.

Do not scale drawings. Use dimensions only. Contractor shall be responsible for verifying all dimensions.

Information hereon and herein is confidential.

NO.	DATE	BY	DESCRIPTION
1	3/13/09	NRD	PER IDOT REVIEW

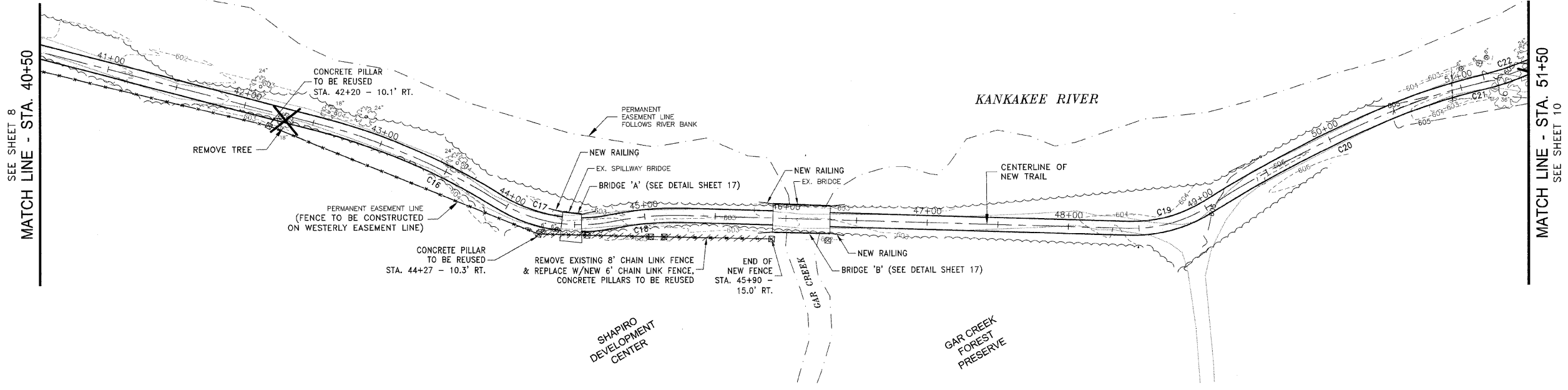
PLAN & PROFILE
 STA. 40+50 TO STA. 51+50

IMPROVEMENTS TO SERVE RIVERFRONT TRAIL PHASE 1

DATE:	DATE	JOB NO. E07093
SCALE: HORZ.: 1"=40'	VERT.: 1"=4'	FILE NO.
DRAWN BY: NRD		SHEET 9
CHECKED BY: SRM		OF 18

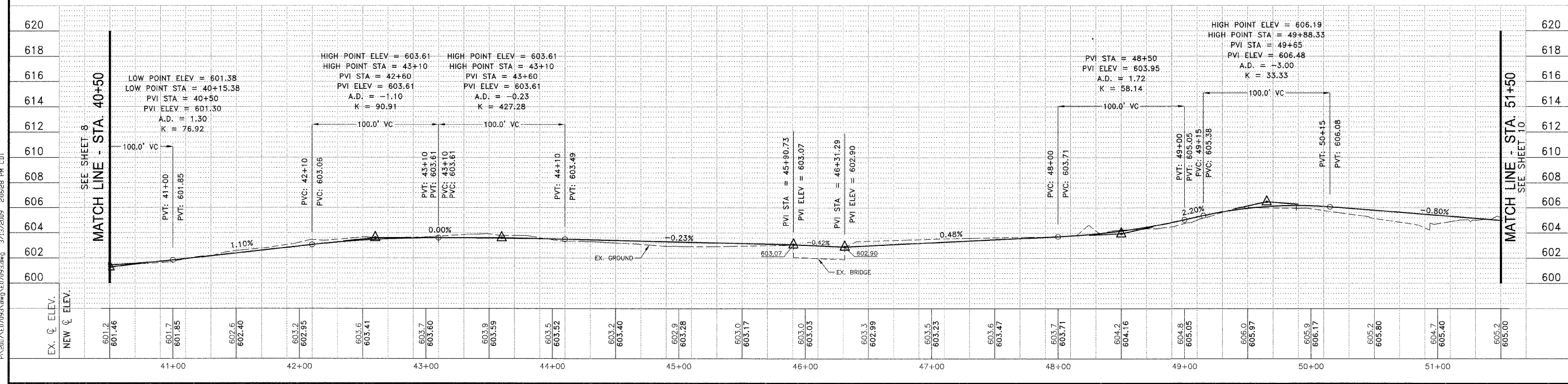
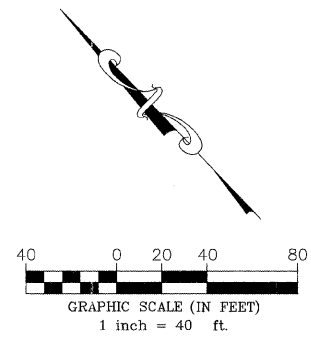
SEE SHEET 8
 MATCH LINE - STA. 40+50

MATCH LINE - STA. 51+50
 SEE SHEET 10



CURVE	LENGTH	RADIUS	TANGENT	DELTA ANGLE	P.I. STATION
C1	10.63	10.00	5.88	60°52'44"	9+91.58
C2	104.84	100.00	57.82	60°04'13"	11+78.74
C3	82.34	100.00	43.67	47°10'43"	12+69.43
C4	554.58	2000.00	279.08	15°53'15"	15+87.18
C5	60.79	150.00	30.82	23°13'17"	18+93.50
C6	58.15	200.00	29.28	16°39'35"	19+52.75
C7	115.06	100.00	65.27	86°16'08"	20+93.03
C8	88.34	100.00	47.28	50°36'46"	21+90.69
C9	94.79	100.00	51.30	54°18'41"	23+67.53
C10	72.53	100.00	37.94	41°33'16"	24+48.96
C11	78.72	500.00	39.44	9°01'15"	28+66.88
C12	72.16	200.00	36.48	20°40'19"	29+42.64
C13	148.68	125.00	84.55	68°08'57"	31+70.64
C14	164.29	101.00	106.80	93°12'00"	33+41.57
C15	439.15	600.00	229.93	41°56'09"	38+17.30
C16	136.97	450.00	69.02	17°26'24"	43+24.52
C17	83.84	110.00	44.07	43°40'07"	44+36.54
C18	51.10	220.00	25.67	13°18'34"	45+01.98
C19	58.65	100.00	30.20	33°36'22"	48+73.19
C20	142.85	900.00	71.58	9°05'49"	49+73.22
C21	66.34	400.00	33.25	9°30'10"	50+77.75
C22	56.48	227.85	28.39	14°12'11"	51+42.72
C23	51.89	300.00	26.01	9°54'39"	54+24.63
C24	53.69	200.00	27.01	15°22'53"	54+77.52
C25	51.80	450.00	25.93	6°35'44"	56+12.99
C26	50.98	700.00	25.50	4°10'22"	56+74.31
C27	57.03	250.00	26.64	13°04'16"	58+26.72
C28	52.25	200.00	26.27	14°58'07"	58+94.84
C29	79.59	500.00	39.88	9°07'13"	59+73.15
C30	56.22	1200.00	28.12	2°41'04"	61+01.33
C31	94.63	300.00	47.71	18°04'24"	63+59.67
C32	50.59	400.00	25.33	7°14'47"	64+65.47
C33	51.96	150.00	26.21	18°36'30"	65+47.63
C34	85.35	100.00	45.47	48°54'02"	67+14.52
C35	68.67	100.00	35.75	39°20'36"	67+90.15

- NOTES:**
- ON THE GAR CREEK BRIDGE AND SPILLWAY BRIDGE, THE AREAS OF EXPOSED REBAR SHALL BE CLEANED OF LOOSE CONCRETE AND RUST ON BARS. A CONCRETE PATCH SHALL BE INSTALLED AND TROWELED TO MATCH ADJACENT CONCRETE. (PAID AS STRUCTURAL REPAIR OF CONCRETE)
 - ON THE SPILLWAY BRIDGE, AREAS OF POCKETED LIMESTONE FOUNDATION SHALL BE FILLED WITH CONCRETE (PAID AS CLASS S1 CONCRETE). RIPRAP CLASS A4 SHALL BE PLACED ALONG THE FOUNDATION.



TYSON ENGINEERING, INC.
 CONSULTING CIVIL ENGINEERS
 AND SURVEYORS
 DESIGN FIRM LICENSE #194-001136
 367 SOUTH SCHUYLER AVENUE
 KANKAKEE, ILLINOIS 60901
 PHONE (815) 932-7406

This document and the ideas and designs incorporated herein, as an instrument of professional service, is the property of Tyson Engineering Inc. and is not to be used in whole or in part, for any other project without written authorization of Tyson Engineering Inc.

Do not scale drawings. Use dimensions only. Contractor shall be responsible for verifying all dimensions.
 Information hereon and herein is confidential.

REVISIONS			
NO.	DATE	BY	DESCRIPTION
1	3/13/09	NRD	PER IDOT REVIEW

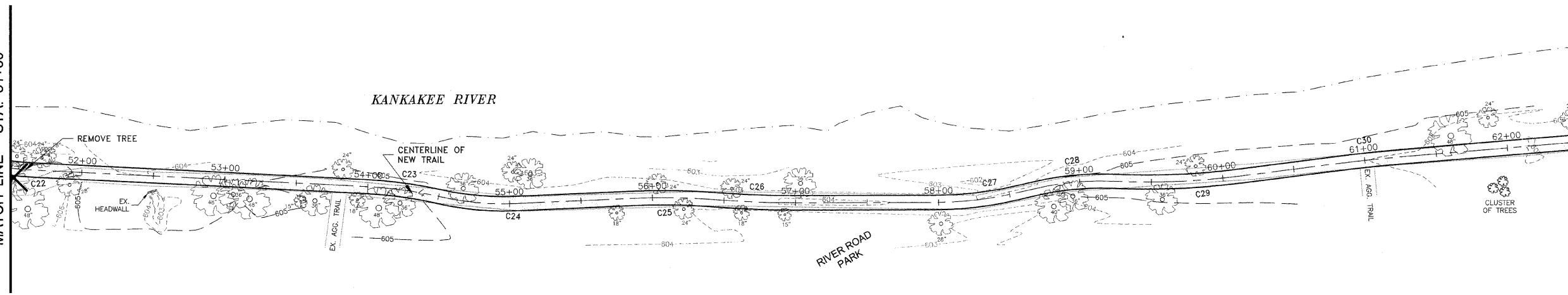
PLAN & PROFILE
 STA. 51+50 TO
 STA. 62+50

IMPROVEMENTS TO SERVE RIVERFRONT TRAIL PHASE 1

PROJECT:	SECTION	DATE:	DATE	JOB NO.
	06-00001-00-BT			E07093
SCALE:	HORZ.: 1"=40'	DRAWN BY:	FILE NO.	
	VERT.: 1"=4'	NRD		
CHECKED BY:	SRM	SHEET	10	
		OF 18		

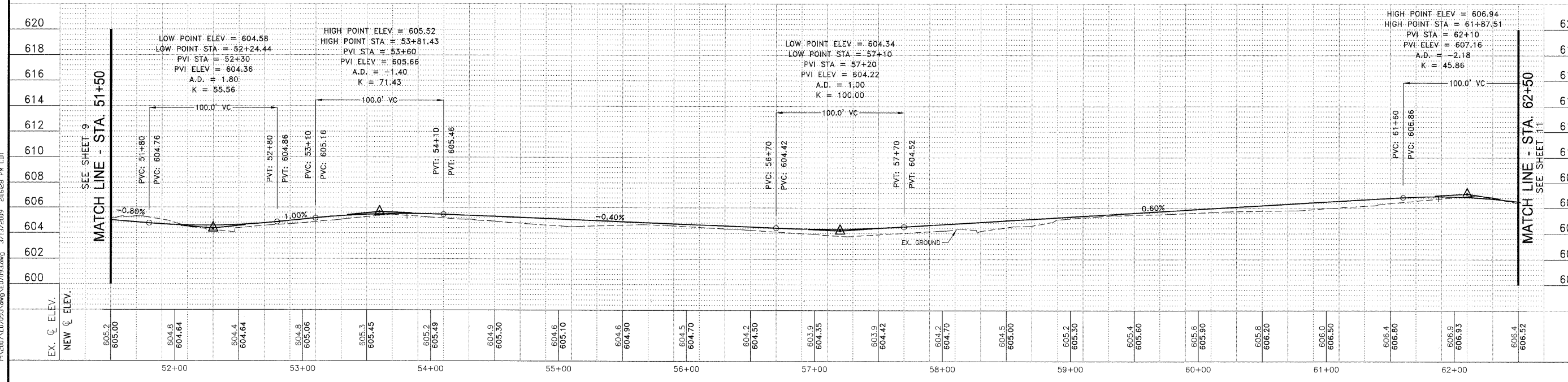
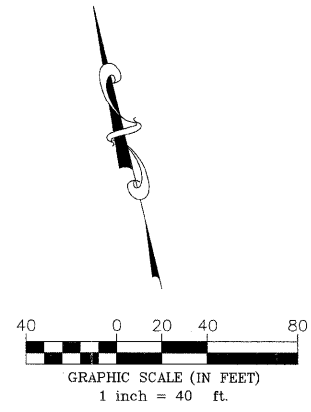
SEE SHEET 9
 MATCH LINE - STA. 51+50

MATCH LINE - STA. 62+50
 SEE SHEET 11



KANKAKEE
 COMMUNITY
 COLLEGE

CURVE TABLE					
CURVE	LENGTH	RADIUS	TANGENT	DELTA ANGLE	P.I. STATION
C1	10.63	10.00	5.88	60°52'44"	9+91.59
C2	104.84	100.00	57.82	60°04'13"	11+78.74
C3	82.34	100.00	43.67	47°10'43"	12+69.43
C4	554.58	2000.00	279.08	15°53'15"	15+87.18
C5	60.79	150.00	30.82	23°13'17"	18+93.50
C6	58.15	200.00	29.28	16°39'35"	19+52.75
C7	115.66	100.00	65.27	66°16'05"	20+93.03
C8	88.34	100.00	47.28	50°38'45"	21+90.89
C9	94.79	100.00	51.90	54°18'41"	23+67.53
C10	72.53	100.00	37.94	41°33'16"	24+48.98
C11	78.72	500.00	39.44	9°01'15"	28+66.88
C12	72.16	200.00	36.48	20°40'19"	29+42.64
C13	148.68	125.00	84.55	68°08'57"	31+70.64
C14	164.29	101.00	106.80	93°12'00"	33+41.57
C15	439.15	600.00	229.93	41°58'09"	38+17.30
C16	136.97	450.00	69.02	17°26'24"	43+24.52
C17	83.84	110.00	44.07	43°40'07"	44+36.54
C18	51.10	220.00	25.67	13°18'34"	45+01.98
C19	58.65	100.00	30.20	33°36'22"	48+73.19
C20	142.05	900.00	71.56	9°05'40"	49+73.22
C21	66.34	400.00	33.25	9°30'10"	50+77.76
C22	56.48	227.85	28.39	14°12'11"	51+42.72
C23	51.89	300.00	26.01	9°54'39"	54+24.63
C24	53.69	200.00	27.01	15°22'53"	54+77.52
C25	51.80	450.00	25.93	6°35'44"	56+12.99
C26	50.98	700.00	25.50	4°10'22"	56+74.31
C27	57.03	250.00	28.64	13°04'16"	58+26.72
C28	52.25	200.00	26.27	14°58'07"	58+94.94
C29	79.59	500.00	39.88	9°07'13"	59+73.15
C30	56.22	1200.00	28.12	2°41'04"	61+01.33
C31	94.63	300.00	47.71	16°04'24"	63+59.67
C32	50.59	400.00	25.33	7°14'47"	64+05.47
C33	51.96	160.00	26.21	18°36'30"	65+47.83
C34	85.35	100.00	45.47	48°54'02"	67+14.52
C35	68.67	100.00	35.75	39°20'36"	67+90.15



P:\2007\07093\dwg\07093.dwg 3/13/09 2:06:29 PM CDT

TYSON ENGINEERING, INC.
 CONSULTING CIVIL ENGINEERS AND SURVEYORS
 DESIGN FIRM LICENSE #161-001136
 367 SOUTH SCHUYLER AVENUE
 KANKAKEE, ILLINOIS 60901
 PHONE (815) 932-7406

This document and the ideas and designs incorporated herein, as an instrument of professional service, is the property of Tyson Engineering Inc. and is not to be used in whole or in part, for any other project without written authorization of Tyson Engineering Inc.

Do not scale drawings. Use dimensions only. Contractor shall be responsible for verifying all dimensions.

Information hereon and herein is confidential.

NO.	DATE	BY	DESCRIPTION
1	3/13/09	NRD	PER IDOT REVIEW

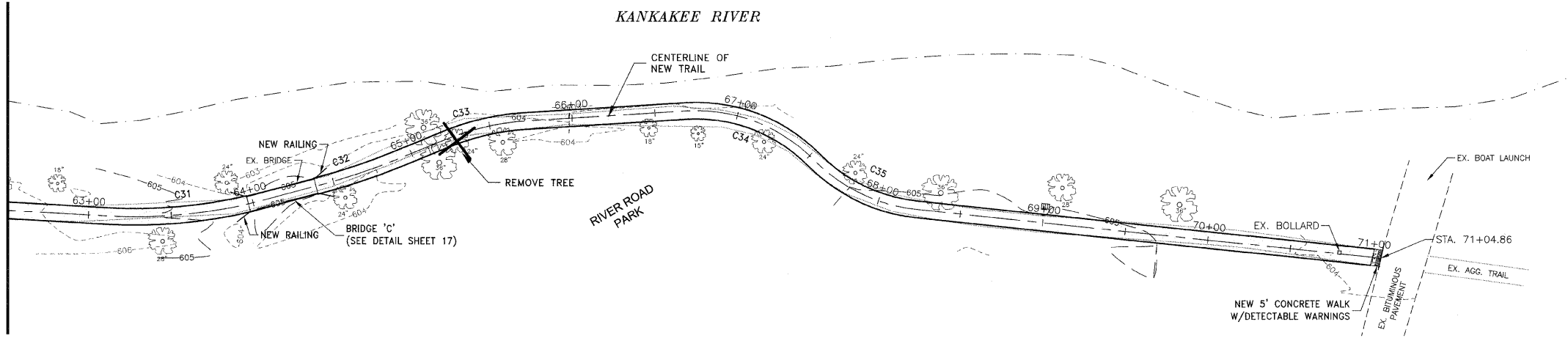
PLAN & PROFILE
 STA. 62+50 TO STA. 71+02.23

IMPROVEMENTS TO SERVE RIVERFRONT TRAIL PHASE 1

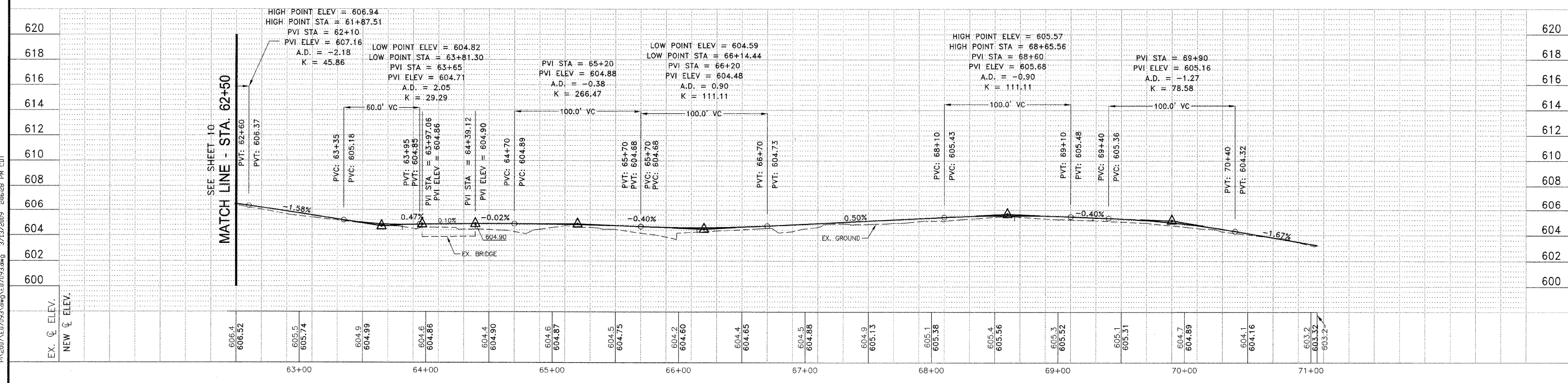
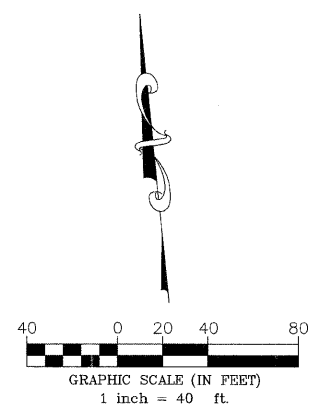
SECTION 06-00001-00-BT

DATE: DATE JOB NO. E07093
 SCALE: HORZ.: 1"=40' FILE NO.
 VERT.: 1"=4'
 DRAWN BY: NRD SHEET 11
 CHECKED BY: SRM OF 18

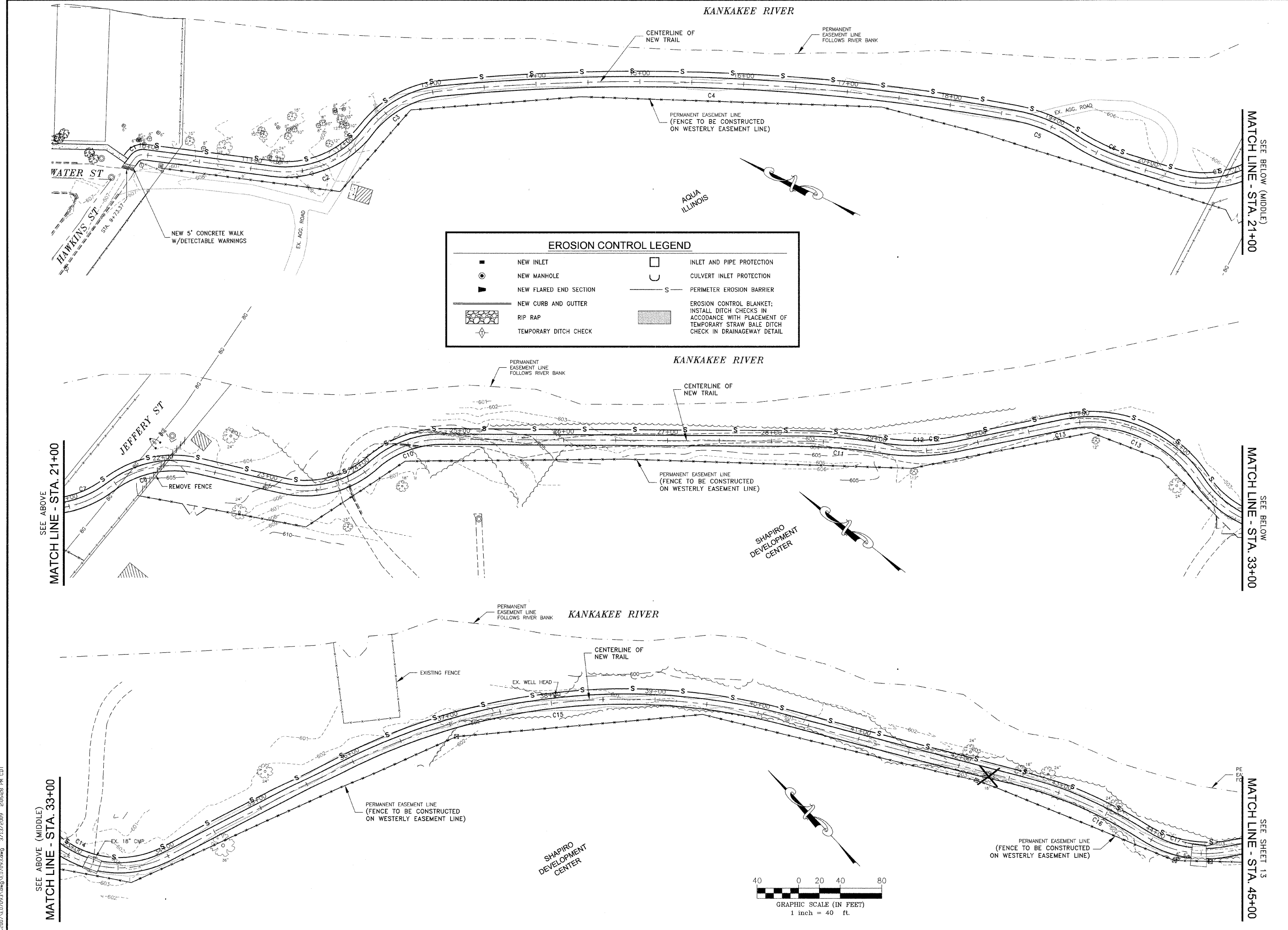
SEE SHEET 10
 MATCH LINE - STA. 62+50



CURVE	LENGTH	RADIUS	TANGENT	DELTA ANGLE	P.I. STATION
C1	10.63	10.00	5.88	60°52'44"	61+81.59
C2	104.84	100.00	57.82	60°04'13"	61+78.74
C3	82.34	100.00	43.87	47°10'43"	62+69.43
C4	554.58	2000.00	279.08	15°53'15"	65+87.18
C5	60.79	150.00	30.82	23°13'17"	66+93.50
C6	58.15	200.00	29.28	16°39'35"	67+52.75
C7	115.66	100.00	65.27	66°18'05"	68+93.03
C8	88.34	100.00	47.28	50°36'45"	69+90.69
C9	94.79	100.00	51.30	54°18'41"	70+67.53
C10	72.53	100.00	37.94	41°33'16"	71+48.96
C11	78.72	500.00	39.44	9°01'15"	72+66.88
C12	72.16	200.00	36.48	20°40'19"	73+42.84
C13	148.88	125.00	84.55	68°08'57"	74+70.84
C14	184.29	101.00	106.80	93°12'00"	75+41.57
C15	439.15	800.00	229.93	41°56'09"	78+17.30
C16	138.97	450.00	89.02	17°26'24"	80+24.52
C17	83.84	110.00	44.07	43°40'07"	81+36.54
C18	51.10	220.00	25.67	13°18'34"	82+01.98
C19	58.65	100.00	30.20	33°36'22"	82+73.19
C20	142.85	900.00	71.58	9°05'40"	83+73.22
C21	66.34	400.00	33.25	9°30'10"	84+77.75
C22	66.48	227.85	28.39	14°12'11"	85+42.72
C23	51.89	300.00	26.01	9°54'39"	86+24.63
C24	53.69	200.00	27.01	15°22'53"	87+77.52
C25	51.80	450.00	25.93	6°35'44"	88+12.99
C26	50.98	700.00	25.50	4°10'22"	88+74.31
C27	57.03	250.00	28.84	13°04'16"	89+26.72
C28	52.25	200.00	26.27	14°58'07"	89+94.94
C29	79.59	500.00	39.88	9°07'13"	90+73.15
C30	56.22	1200.00	28.12	2°41'04"	91+01.33
C31	94.63	300.00	47.71	18°04'24"	91+59.67
C32	50.59	400.00	25.33	7°14'47"	92+65.47
C33	51.96	160.00	26.21	18°36'30"	93+47.63
C34	85.35	100.00	45.47	48°54'02"	94+14.52
C35	68.67	100.00	35.75	39°20'36"	94+90.15



E:\2007\07093\dwg\07093.dwg 3/13/2009 2:06:28 PM CDT



EROSION CONTROL LEGEND			
■	NEW INLET	□	INLET AND PIPE PROTECTION
●	NEW MANHOLE	⌋	CULVERT INLET PROTECTION
▶	NEW FLARED END SECTION	— S —	PERIMETER EROSION BARRIER
—	NEW CURB AND GUTTER	▨	EROSION CONTROL BLANKET: INSTALL DITCH CHECKS IN ACCORDANCE WITH PLACEMENT OF TEMPORARY STRAW BALE DITCH CHECK IN DRAINAGEWAY DETAIL
▨	RIP RAP	◆	TEMPORARY DITCH CHECK

F.A.L. NO.	SECTION	COUNTY	TOTAL SHEETS	SHEET NO.
*	**	KANKAKEE	17	12

CONTRACT NO. 87390
FED. ROAD DIST. NO. ILLINOIS FED. AID PROJECT

*06-00001-00-BT

TYSON ENGINEERING, INC.
CONSULTING CIVIL ENGINEERS
AND SURVEYORS
DESIGN FIRM LICENSE #164-001136
367 SOUTH SCHUYLER AVENUE
KANKAKEE, ILLINOIS 60901
PHONE (815) 932-7406

This document and the ideas and designs incorporated herein, as an instrument of professional service, is the property of Tyson Engineering Inc. and is not to be used in whole or in part, for any other project without written authorization of Tyson Engineering Inc.
Do not scale drawings. Use dimensions only. Contractor shall be responsible for verifying all dimensions.
Information herein and herein is confidential.

REVISIONS			
NO.	DATE	BY	DESCRIPTION
1	3/13/09	NRD	PER IDOT REVIEW

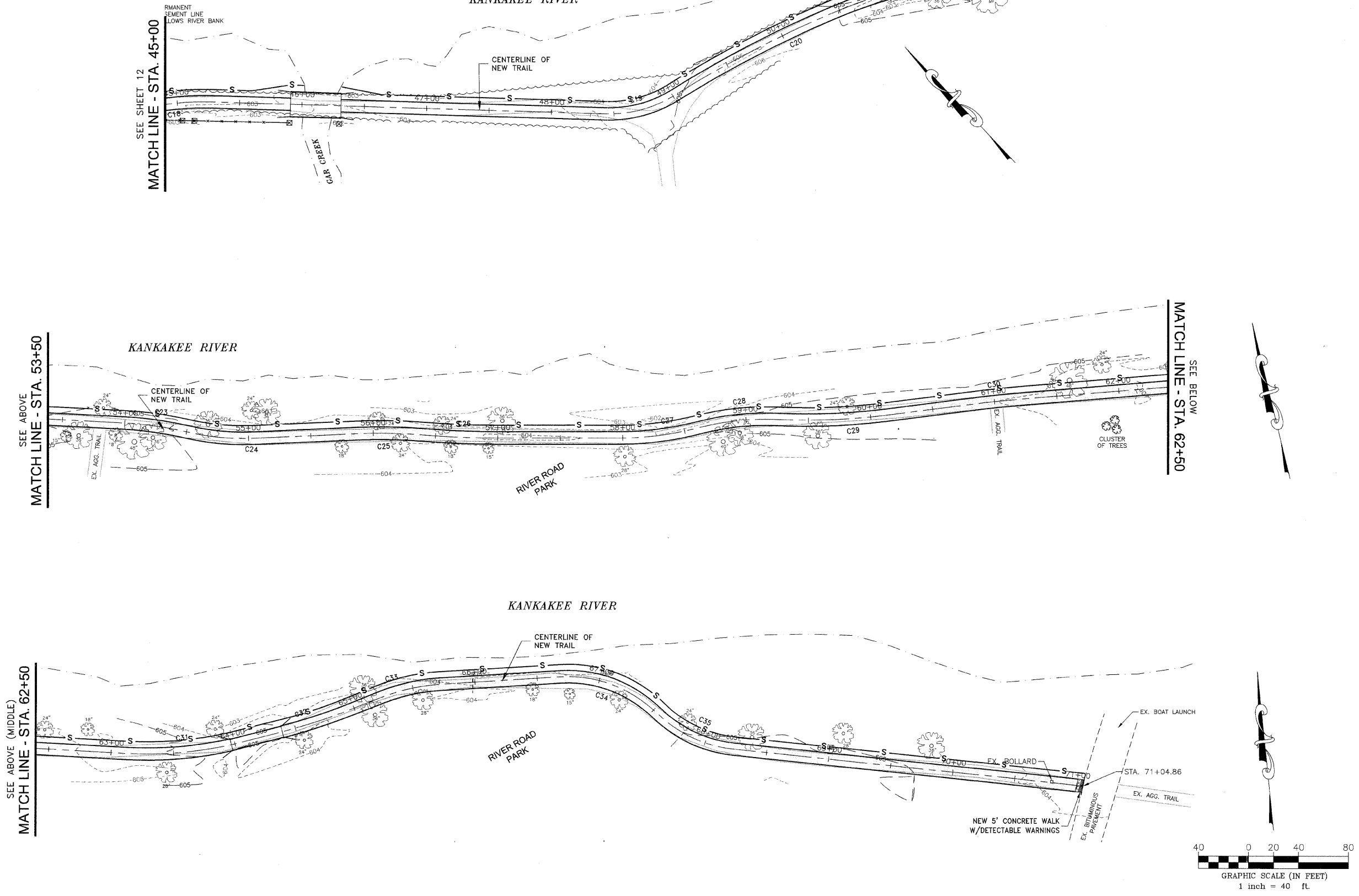
STORM WATER POLLUTION PREVENTION PLAN
STA. 9+73.37 TO STA. 45+00

IMPROVEMENTS TO SERVE RIVERFRONT TRAIL PHASE 1

SECTION 06-00001-00-BT		
DATE:	DATE	JOB NO. E07093
SCALE:	1"=40'	FILE NO.
DRAWN BY:	NRD	SHEET 12
CHECKED BY:	SRM	OF 18

P:\2007\E07093\dwg\E07093.dwg 3/13/2009 2:06:58 PM CDT

EROSION CONTROL LEGEND			
■	NEW INLET	□	INLET AND PIPE PROTECTION
●	NEW MANHOLE	U	CULVERT INLET PROTECTION
▲	NEW FLARED END SECTION	— S —	PERIMETER EROSION BARRIER
▨	NEW CURB AND GUTTER	▨	EROSION CONTROL BLANKET; INSTALL DITCH CHECKS IN ACCORDANCE WITH PLACEMENT OF TEMPORARY STRAW BALE DITCH CHECK IN DRAINAGEWAY DETAIL
▨	RIP RAP		
◇	TEMPORARY DITCH CHECK		



SEE BELOW (MIDDLE)
MATCH LINE - STA. 53+50

SEE BELOW
MATCH LINE - STA. 62+50

SEE SHEET 12
MATCH LINE - STA. 45+00

SEE ABOVE
MATCH LINE - STA. 53+50

SEE ABOVE (MIDDLE)
MATCH LINE - STA. 62+50

FAU. RTE.	SECTION	COUNTY	TOTAL SHEETS	SHEET NO.
*	**	KANKAKEE	17	13

CONTRACT NO. 87390

FED. ROAD DIST. NO.	ILLINOIS	FED. AID PROJECT
*06-00001-00-BT		

TYSON ENGINEERING, INC.
CONSULTING CIVIL ENGINEERS AND SURVEYORS
DESIGN FIRM LICENSE # 164-001136
367 SOUTH SCHUYLER AVENUE
KANKAKEE, ILLINOIS 60901
PHONE (815) 952-7406

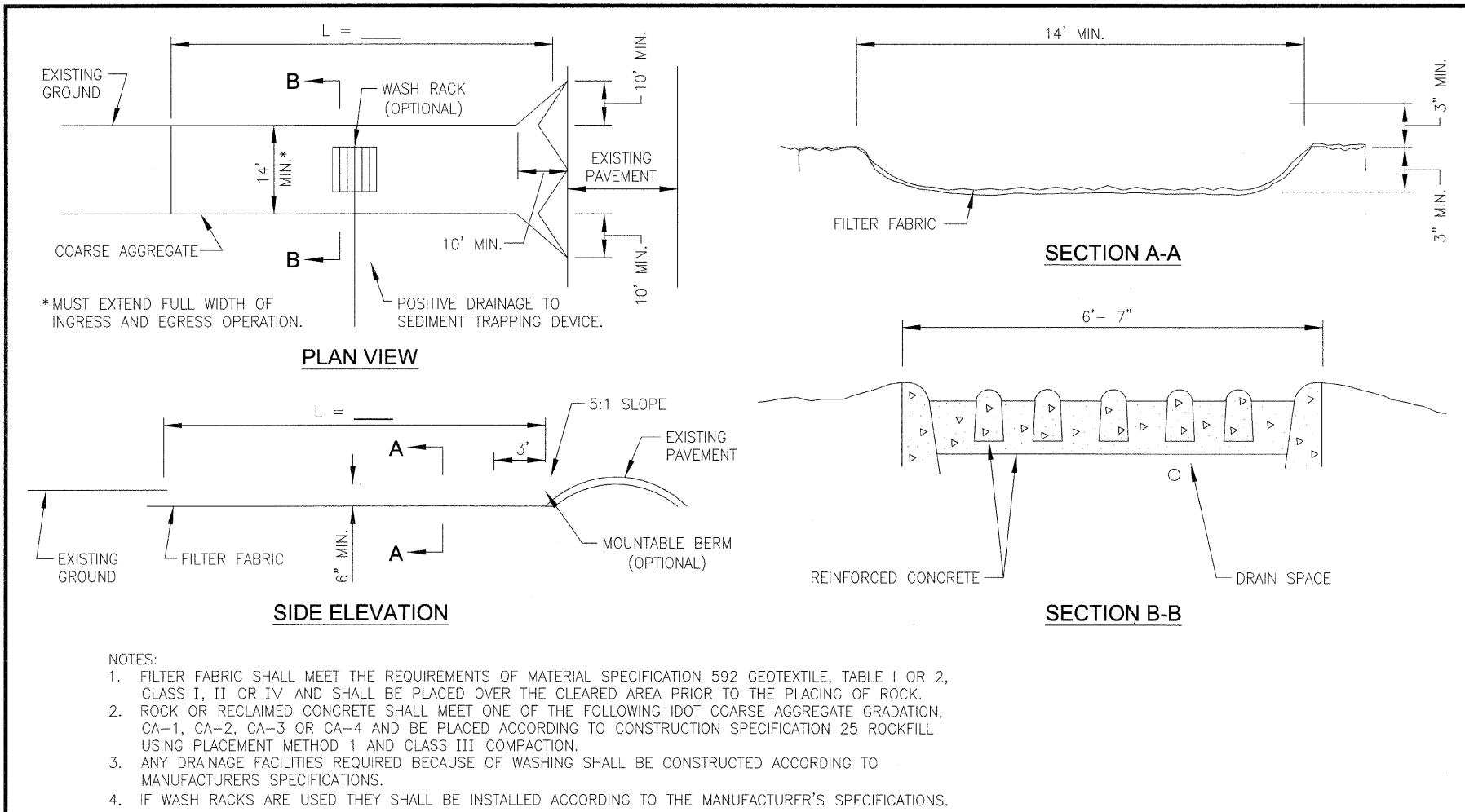
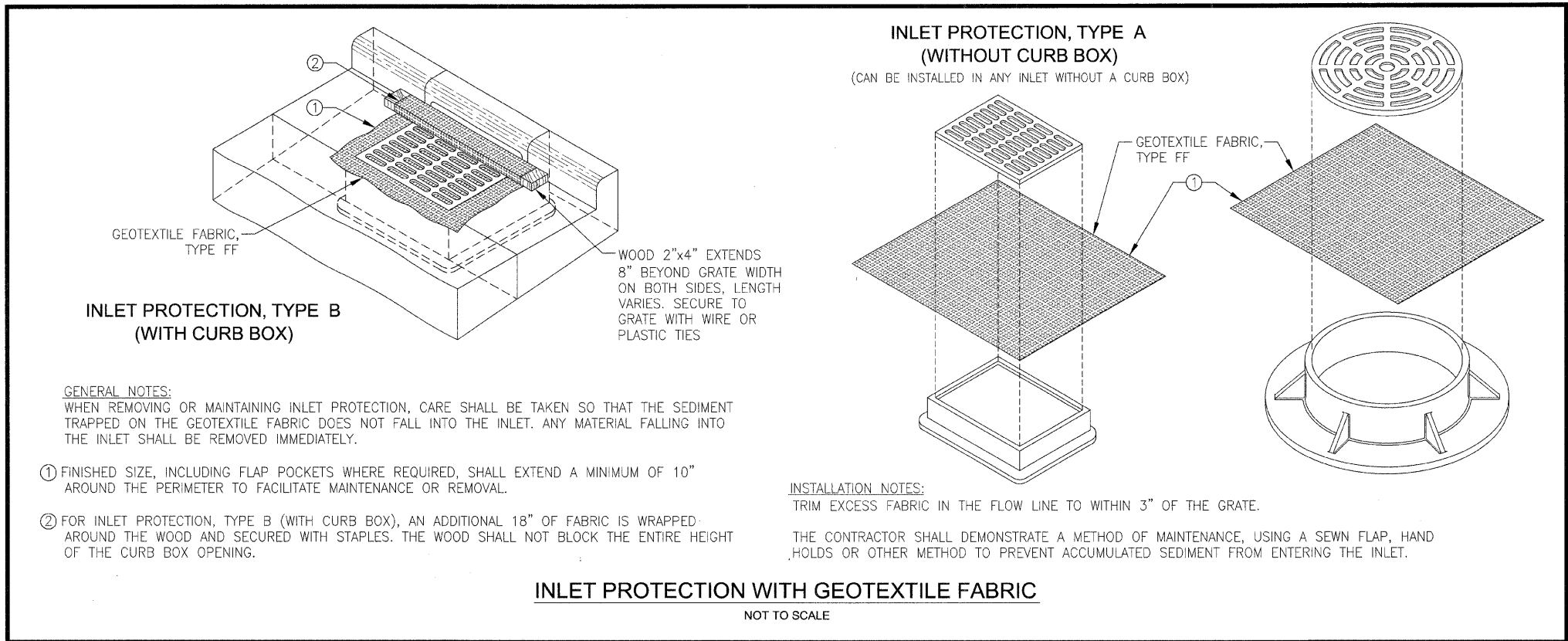
This document and the ideas and designs incorporated herein, as an instrument of professional service, is the property of Tyson Engineering Inc. and is not to be used in whole or in part, for any other project without written authorization of Tyson Engineering Inc.
Do not scale drawings. Use dimensions only. Contractor shall be responsible for verifying all dimensions.
Information hereon and herein is confidential.

REVISIONS			
NO.	DATE	BY	DESCRIPTION
1	3/13/09	NRD	PER IDOT REVIEW

PROJECT:
STORM WATER POLLUTION PREVENTION PLAN
STA. 45+00 TO STA. 71+14.05

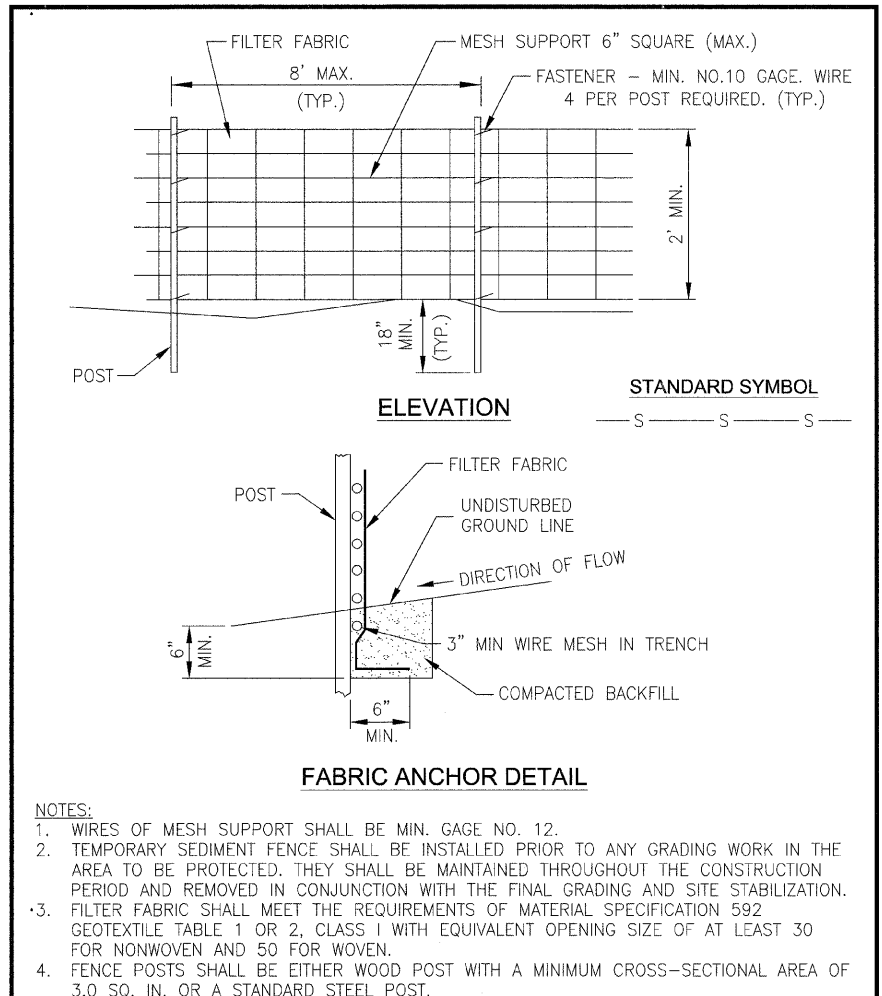
IMPROVEMENTS TO SERVE RIVERFRONT TRAIL PHASE 1

SECTION 06-00001-00-BT	
DATE:	DATE
SCALE:	1"=40'
DRAWN BY:	NRD
CHECKED BY:	SRM
JOB NO. E07093	FILE NO.
SHEET 13	OF 18



STABILIZED CONSTRUCTION ENTRANCE PLAN
NOT TO SCALE

NRCS STANDARD DWG. NO. **IL-630**
Natural Resources Conservation Service DATE 8-18-94



SILTS FENCE WITH WIRE SUPPORT
NOT TO SCALE

NRCS STANDARD DWG. NO. **IL-ENG-50**
Natural Resources Conservation Service DATE 7/05

FAU. NO.	SECTION	COUNTY	TOTAL SHEETS	SHEET NO.								
*	**	KANKAKEE	17	14								
CONTRACT NO. 87390												
FED. ROAD DIST. NO. ILLINOIS FED. AID PROJECT												
**06-00001-00-BT												
<p>TYSON ENGINEERING, INC. CONSULTING CIVIL ENGINEERS AND SURVEYORS DESIGN FIRM LICENSE #164-001136 367 SOUTH SCHUYLER AVENUE KANKAKEE, ILLINOIS 60901 PHONE (815) 932-7406</p>												
<p>This document and the ideas and designs incorporated herein, as an instrument of professional service, is the property of Tyson Engineering Inc. and is not to be used in whole or in part, for any other project without written authorization of Tyson Engineering Inc.</p> <p>Do not scale drawings. Use dimensions only. Contractor shall be responsible for verifying all dimensions.</p> <p>Information hereon and herein is confidential.</p>												
<p>REVISIONS</p> <table border="1"> <thead> <tr> <th>NO.</th> <th>DATE</th> <th>BY</th> <th>DESCRIPTION</th> </tr> </thead> <tbody> <tr> <td>1</td> <td>3/13/09</td> <td>NRD</td> <td>PER IDOT REVIEW</td> </tr> </tbody> </table>					NO.	DATE	BY	DESCRIPTION	1	3/13/09	NRD	PER IDOT REVIEW
NO.	DATE	BY	DESCRIPTION									
1	3/13/09	NRD	PER IDOT REVIEW									

STORM WATER POLLUTION PREVENTION DETAILS

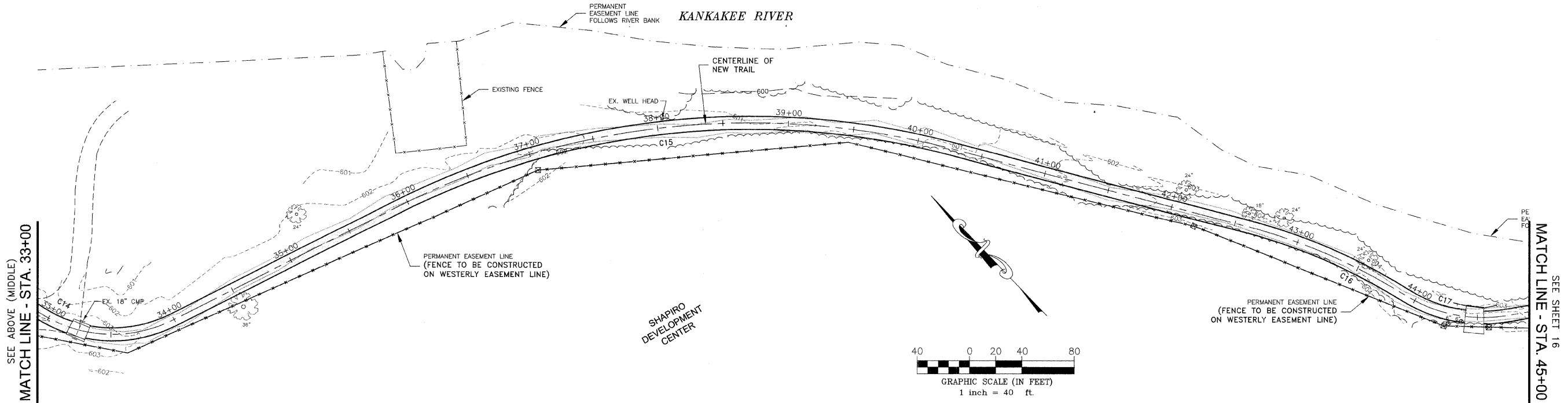
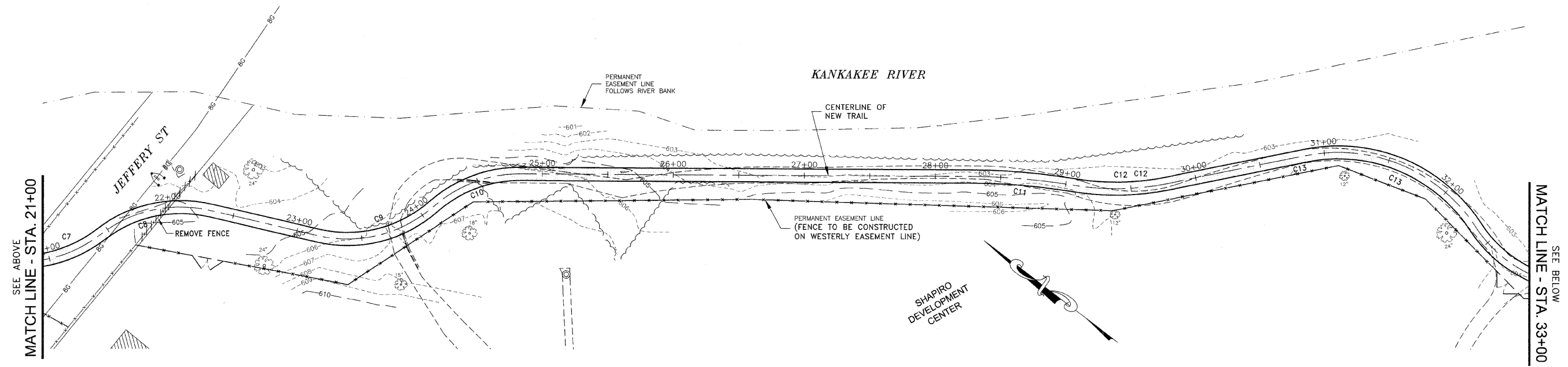
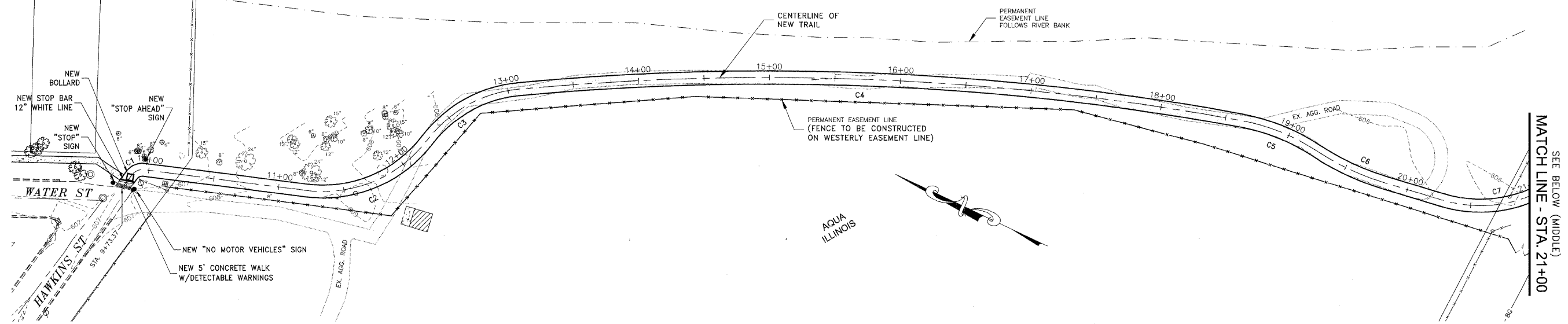
IMPROVEMENTS TO SERVE RIVERFRONT TRAIL PHASE 1

PROJECT: SECTION 06-00001-00-BT

DATE:	DATE	JOB NO. E07093
SCALE:	N/A	FILE NO.
DRAWN BY:	NRD	SHEET 14
CHECKED BY:	SRM	OF 18

PN2007LE7093.dwg 3/13/2009 5:06:28 PM CDT

KANKAKEE RIVER



SEE BELOW (MIDDLE)
MATCH LINE - STA. 21+00

SEE BELOW
MATCH LINE - STA. 33+00

SEE SHEET 16
MATCH LINE - STA. 45+00

FAU. RITE.	SECTION	COUNTY	TOTAL SHEETS	SHEET NO.
*	**	KANKAKEE	17	15

CONTRACT NO. 87390
FED. ROAD DIST. NO. ILLINOIS FED. AID PROJECT

**06-00001-00-BT

TYSON ENGINEERING, INC.
CONSULTING CIVIL ENGINEERS AND SURVEYORS
DESIGN FIRM LICENSE #164-001136
367 SOUTH SCHUYLER AVENUE
KANKAKEE, ILLINOIS 60901
PHONE (815) 932-7406

This document and the ideas and designs incorporated herein, as an instrument of professional service, is the property of Tyson Engineering Inc. and is not to be used in whole or in part, for any other project without written authorization of Tyson Engineering Inc.

Do not scale drawings. Use dimensions only. Contractor shall be responsible for verifying all dimensions.

Information hereon and herein is confidential.

REVISIONS			
NO.	DATE	BY	DESCRIPTION
1	3/13/09	NRD	PER IDOT REVIEW

STRIPING AND SIGNAGE PLAN
STA. 9+73.37 TO STA. 45+00

IMPROVEMENTS TO SERVE RIVERFRONT TRAIL PHASE 1

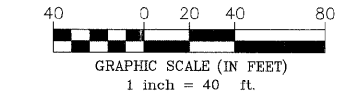
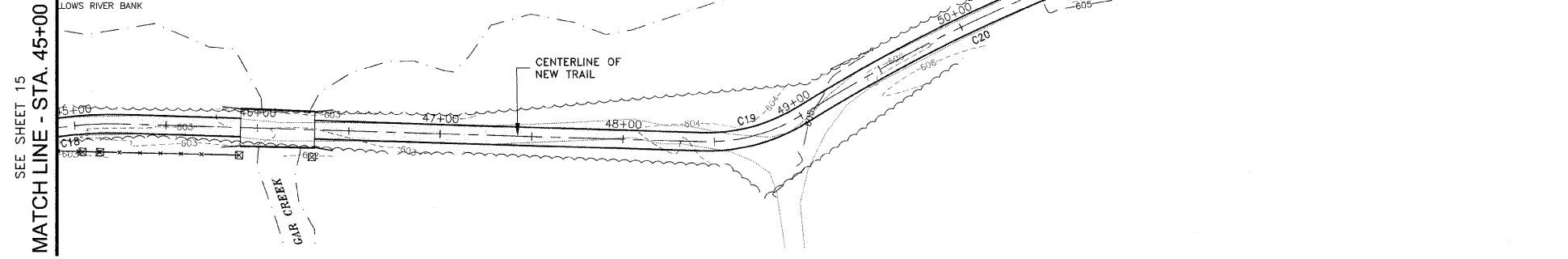
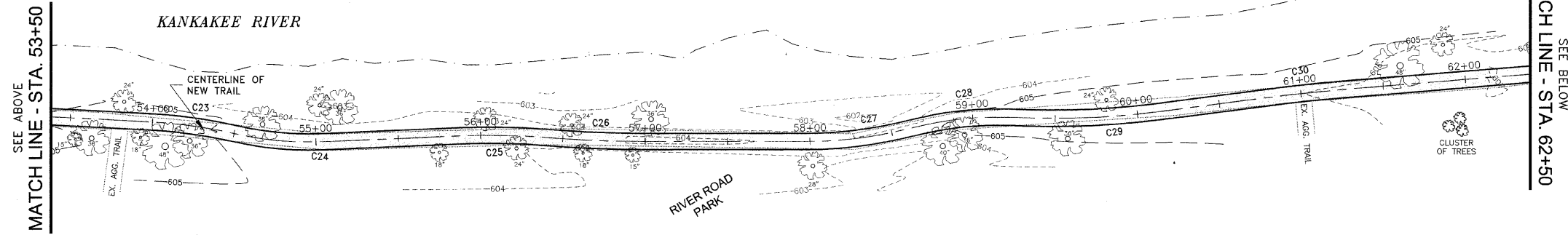
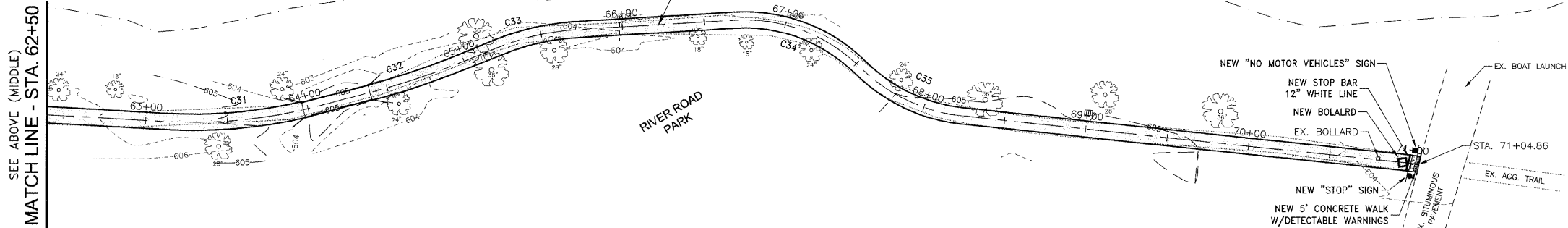
SECTION 06-00001-00-BT		
DATE:	DATE	JOB NO. E07093
SCALE:	1"=40'	FILE NO.
DRAWN BY:	NRD	SHEET 15
CHECKED BY:	SRM	OF 18

PA2007AE07093.dwg 3/13/2009 2:06:28 PM CJT

SEE ABOVE (MIDDLE)
MATCH LINE - STA. 62+50

SEE ABOVE
MATCH LINE - STA. 53+50

SEE SHEET 15
MATCH LINE - STA. 45+00



SEE BELOW
MATCH LINE - STA. 62+50

SEE BELOW (MIDDLE)
MATCH LINE - STA. 53+50

PROJECT:

IMPROVEMENTS TO SERVE RIVERFRONT TRAIL PHASE 1

SECTION
06-00001-00-BT

DATE:	DATE	JOB NO. E07093
SCALE:	1"=40'	FILE NO.
DRAWN BY:	NRD	SHEET 16
CHECKED BY:	SRM	OF 18

STRIPING AND SIGNAGE PLAN
STA. 45+00 TO STA. 71+14.05

REVISIONS

NO.	DATE	BY	DESCRIPTION
1	3/13/09	NRD	PER IDOT REVIEW

This document and the ideas and designs incorporated herein, as an instrument of professional service, is the property of Tyson Engineering Inc. and is not to be used in whole or in part, for any other project without written authorization of Tyson Engineering Inc.

Do not scale drawings. Use dimensions only. Contractor shall be responsible for verifying all dimensions.

Information hereon and herein is confidential.

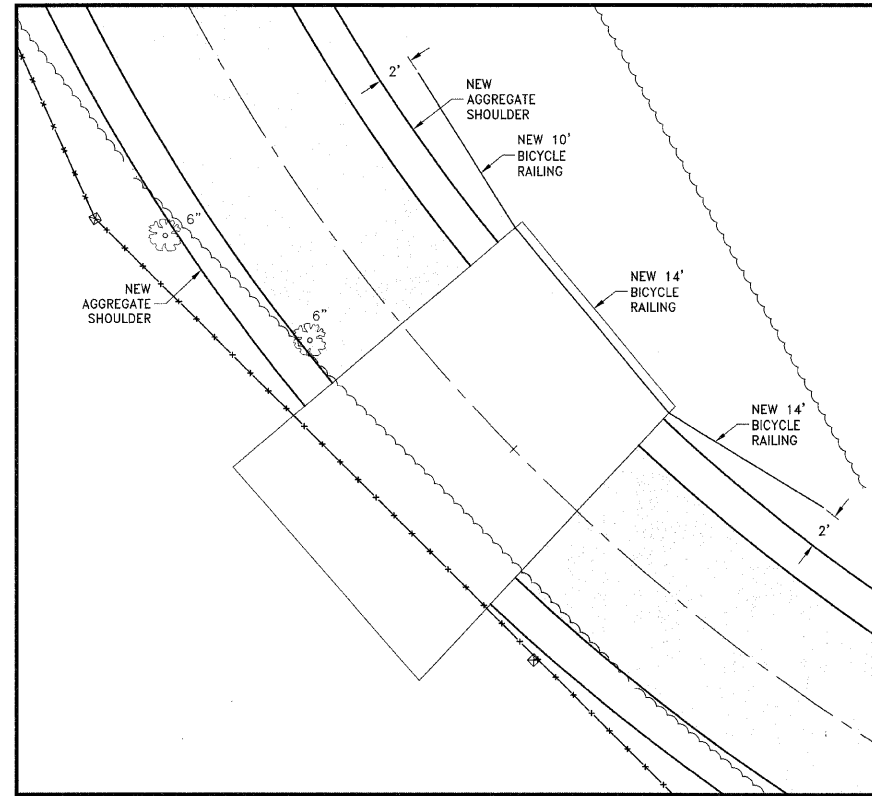
CONTRACT NO. 87390

FED. ROAD DIST. NO. ILLINOIS FED. AID PROJECT

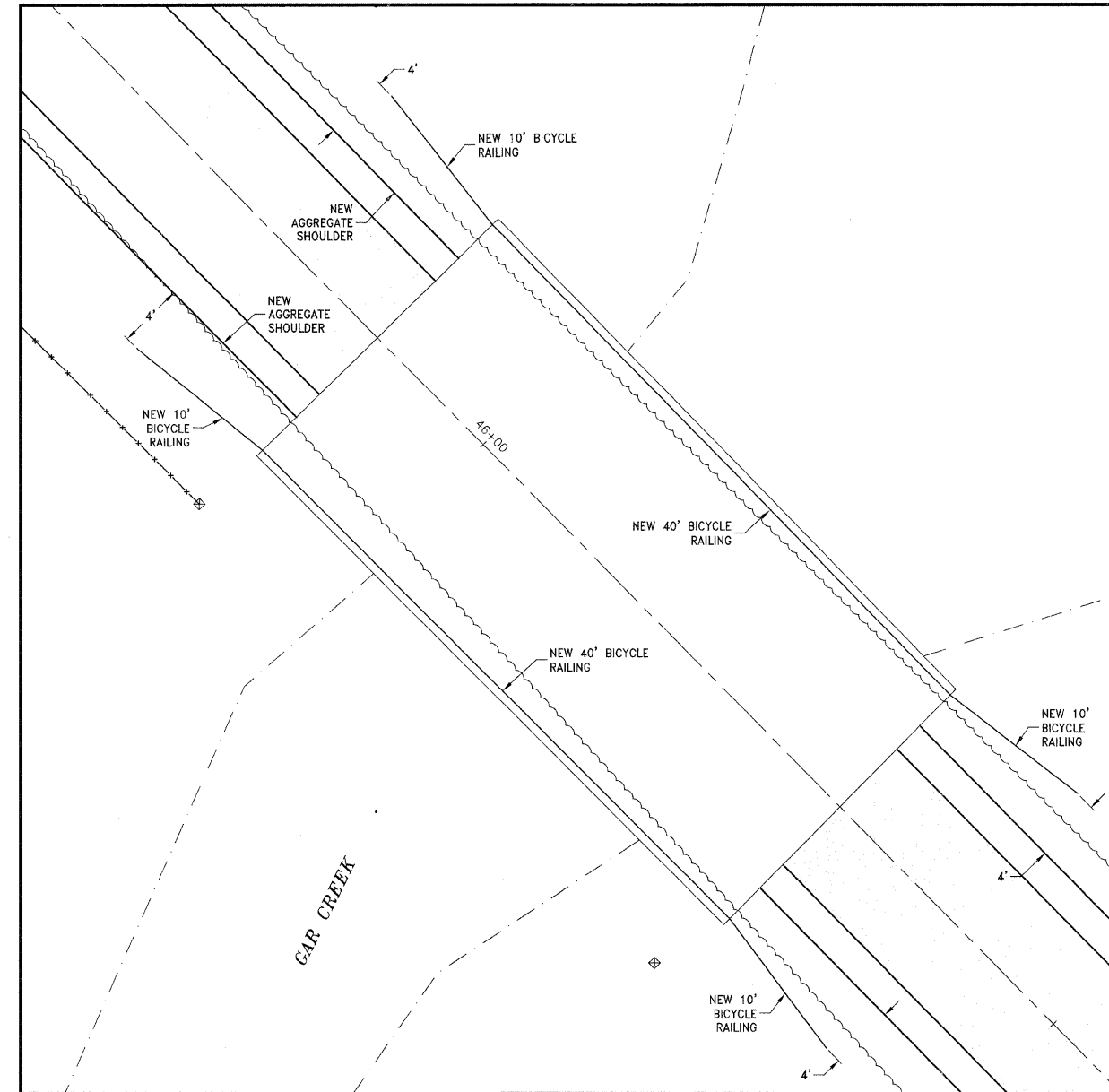
**06-00001-00-BT

TYSON ENGINEERING, INC.
CONSULTING CIVIL ENGINEERS AND SURVEYORS
DESIGN FIRM LICENSE #161-001136

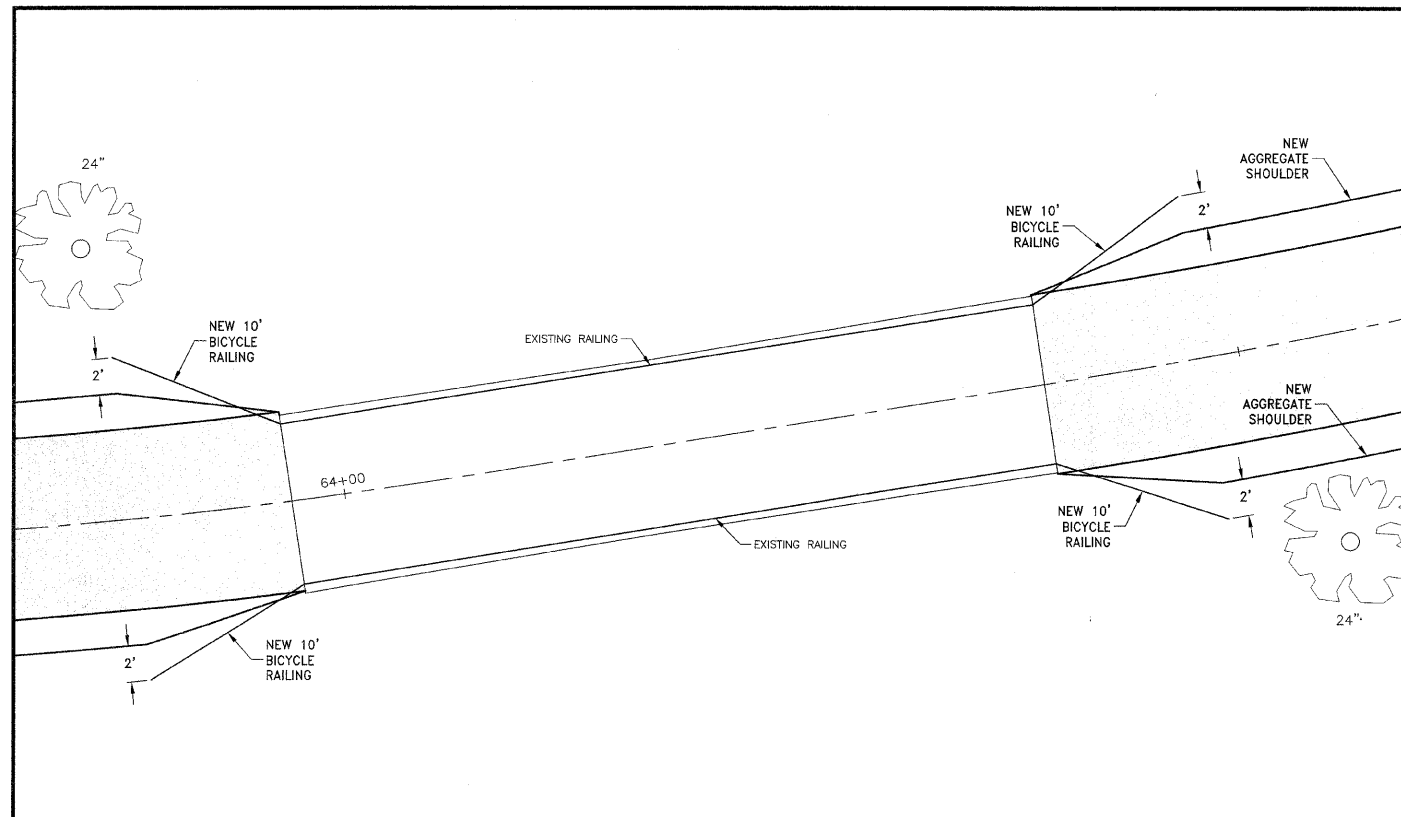
367 SOUTH SCHUYLER AVENUE
KANKAKEE, ILLINOIS 60901
PHONE (815) 932-7406



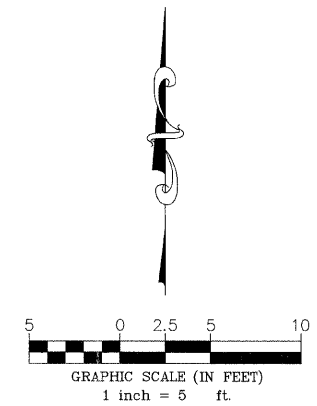
BRIDGE 'A' DETAIL
 STA. 44+40.70 TO STA. 44+54.91
 STRUCTURE: KVPD-003
 (SCALE: 1" = 5')



BRIDGE 'B' DETAIL
 STA. 45+90.73 TO STA. 46+31.29
 STRUCTURE: KVPD-002
 (SCALE: 1" = 5')



BRIDGE 'C' DETAIL
 STA. 63+97.06 TO STA. 64+39.12
 STRUCTURE: KVPD-001
 (SCALE: 1" = 5')



F.A.U. NO.	SECTION	COUNTY	TOTAL SHEETS	SHEET NO.
*	**	KANKAKEE	17	17

CONTRACT NO. 87390
 FED. ROAD DIST. NO. ILLINOIS FED. AID PROJECT

**06-00001-00-BT

TYSON ENGINEERING, INC.
 CONSULTING CIVIL ENGINEERS AND SURVEYORS
 DESIGN FIRM LICENSE #184-001136
 367 SOUTH SCHUYLER AVENUE
 KANKAKEE, ILLINOIS 60901
 PHONE (815) 932-7406

This document and the ideas and designs incorporated herein, as an instrument of professional service, is the property of Tyson Engineering Inc. and is not to be used in whole or in part, for any other project without written authorization of Tyson Engineering Inc.
 Do not scale drawings. Use dimensions only. Contractor shall be responsible for verifying all dimensions.
 Information herein and hereon is confidential.

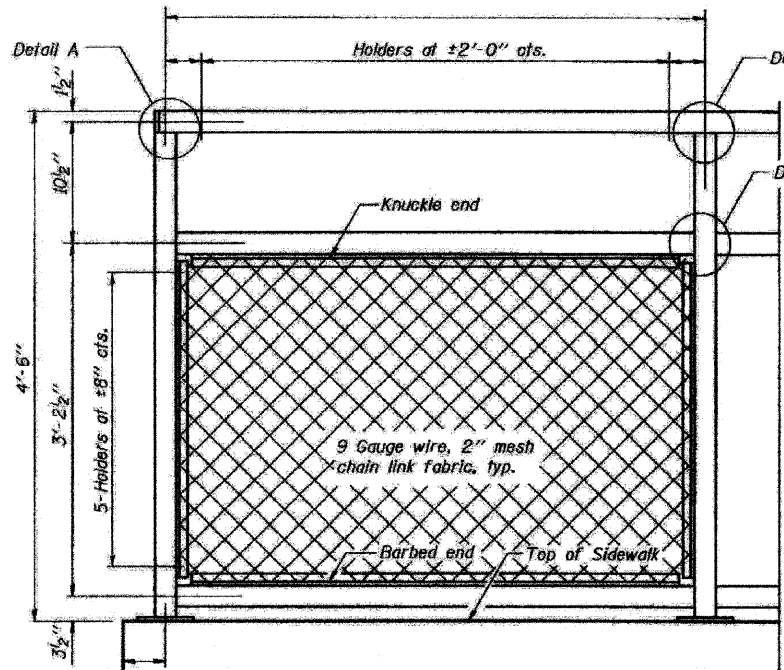
REVISIONS			
NO.	DATE	BY	DESCRIPTION
1	3/13/09	NRD	PER IDOT REVIEW

BRIDGE DETAILS

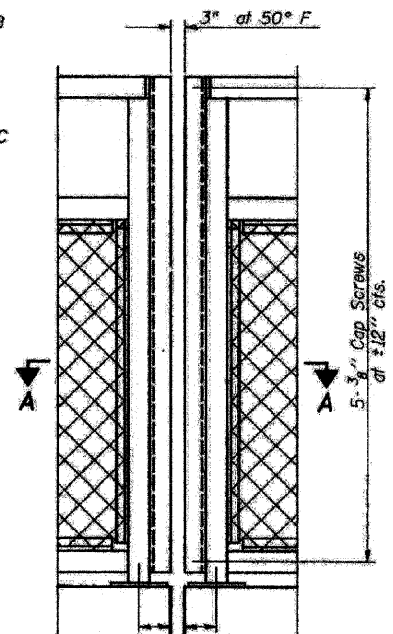
IMPROVEMENTS TO SERVE RIVERFRONT TRAIL PHASE 1

SECTION
 06-00001-00-BT

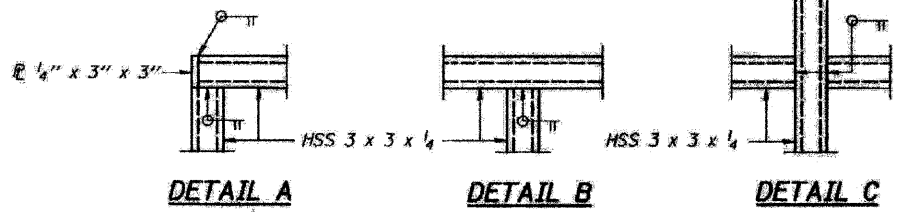
DATE:	DATE	JOB NO. E07093
SCALE:	1"=5'	FILE NO.
DRAWN BY:	NRD	SHEET 17
CHECKED BY:	SRM	OF 18



BICYCLE RAILING ON STRUCTURE

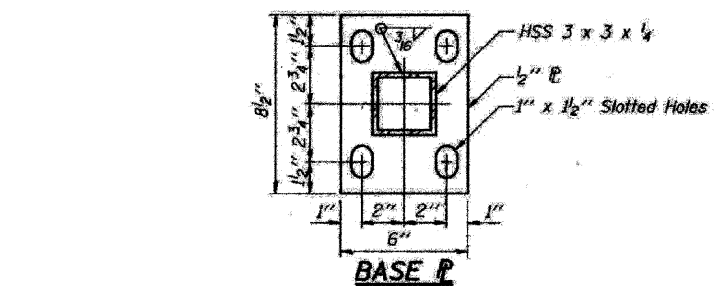
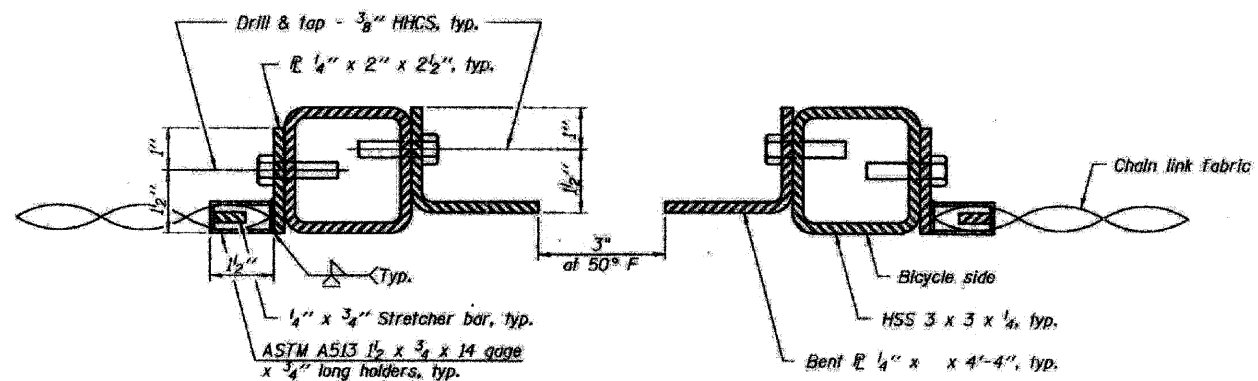


BICYCLE RAILING

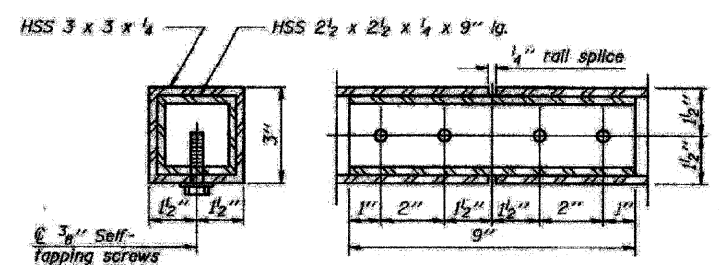


DETAIL A DETAIL B DETAIL C

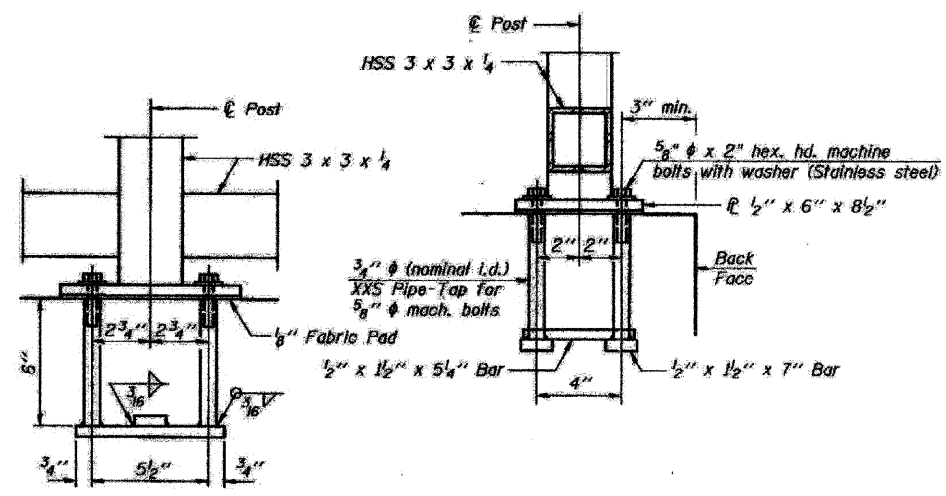
- NOTES:**
- All steel rail elements shall be galvanized according to Article 509.05 of the Standard Specifications.
 - All steel rail elements shall meet grade requirements according to Article 1006.34 of the Standard Specifications.



BASE P

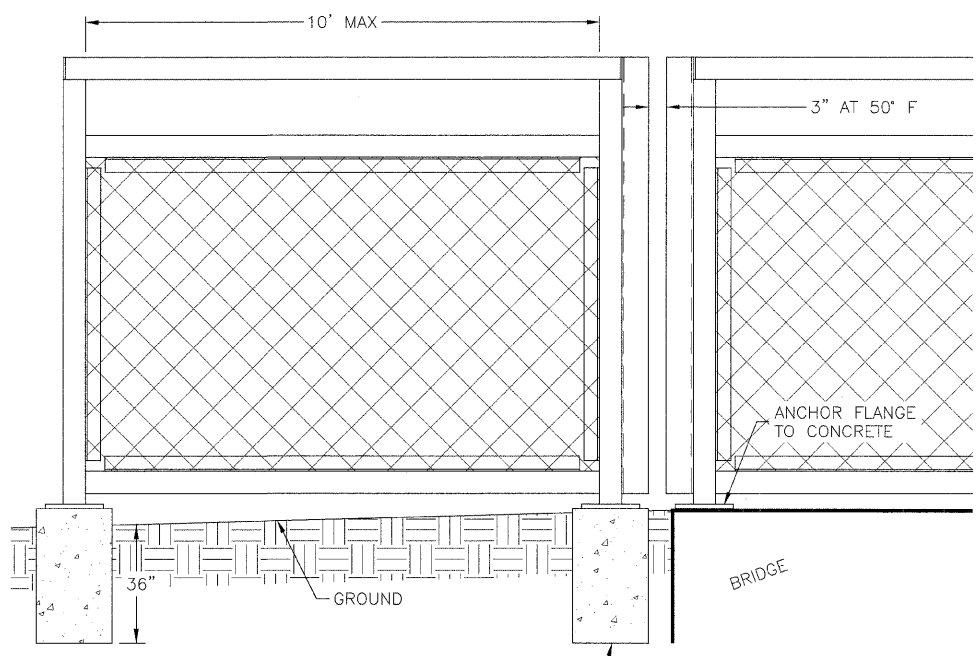


RAIL SPLICE



ANCHOR BOLT DETAILS

In lieu of the cast-in-place anchor device shown, the Contractor has the option of drilling and setting 3/8" anchor rods according to Article 509.06 of the Standard Specifications. Embedment shall be according to the manufacturer's specifications.



BICYCLE RAILING OFF STRUCTURE

12" DIAMETER CONCRETE FOUNDATION FOR RAILING. TOP SAME ELEVATION AS ADJACENT STRUCTURE. INCIDENTAL TO BICYCLE RAILING.

FAU. RITE.	SECTION	COUNTY	TOTAL SHEETS	SHEET NO.
*	**	KANKAKEE	17	17

CONTRACT NO. 87390

FED. ROAD DIST. NO. ILLINOIS FED. AID PROJECT

**06-00001-00-BT

TYSON ENGINEERING, INC.
 CONSULTING CIVIL ENGINEERS
 AND LAND SURVEYORS
 DESIGN FIRM LICENSE #164-001136
 367 SOUTH SCHUYLER AVENUE
 KANKAKEE, ILLINOIS 60901
 PHONE (815) 932-7406

This document and the ideas and designs incorporated herein, as an instrument of professional service, is the property of Tyson Engineering Inc. and is not to be used in whole or in part, for any other project without written authorization of Tyson Engineering Inc.

Do not scale drawings. Use dimensions only. Contractor shall be responsible for verifying all dimensions.

Information herein and herein is confidential.

REVISIONS

NO.	DATE	BY	DESCRIPTION
1	3/13/09	NRD	PER IDOT REVIEW

RAILING DETAILS

IMPROVEMENTS TO SERVE RIVERFRONT TRAIL PHASE 1

PROJECT:

SECTION
06-00001-00-BT

DATE:	DATE	JOB NO. E07093
SCALE:	N/A	FILE NO.
DRAWN BY:	NRD	SHEET 18
CHECKED BY:	SRM	OF 18