

INDEX OF SHEETS

- SHEET 1. COVER SHEET
- SHEET 2. TYPICAL CROSS SECTION, SUMMARY OF QUANTITIES, BUTT JOINT DETAIL, BITUMINOUS MIXTURE TABLE
- SHEET 3. TYPICAL ENTRANCE DETAIL, MAILBOX DETAILS, SIDE ROAD RETURN, GENERAL NOTES

STANDARDS

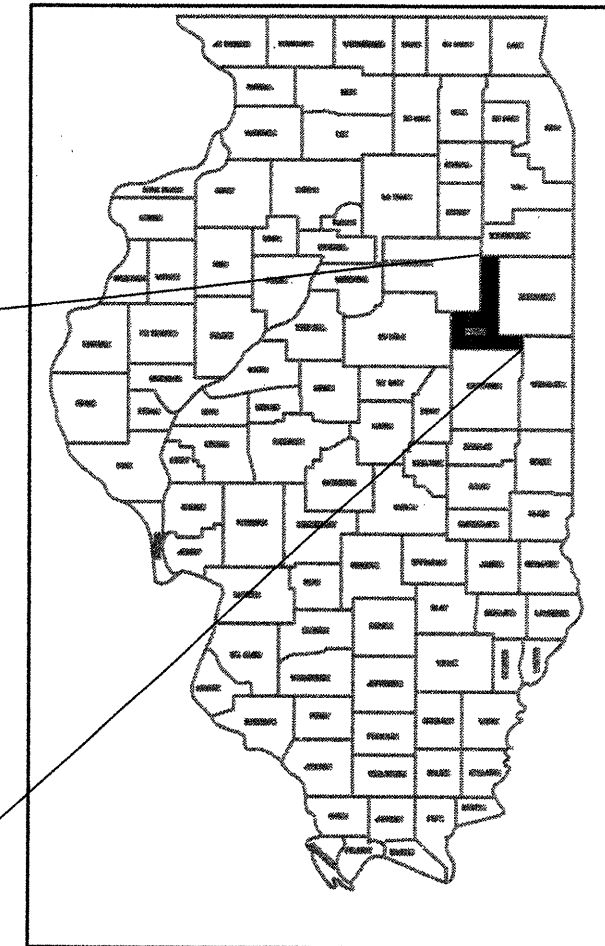
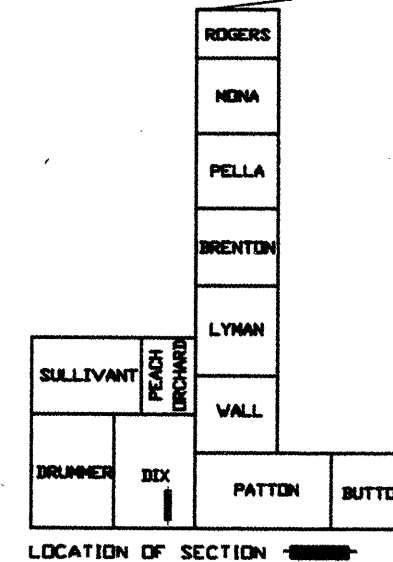
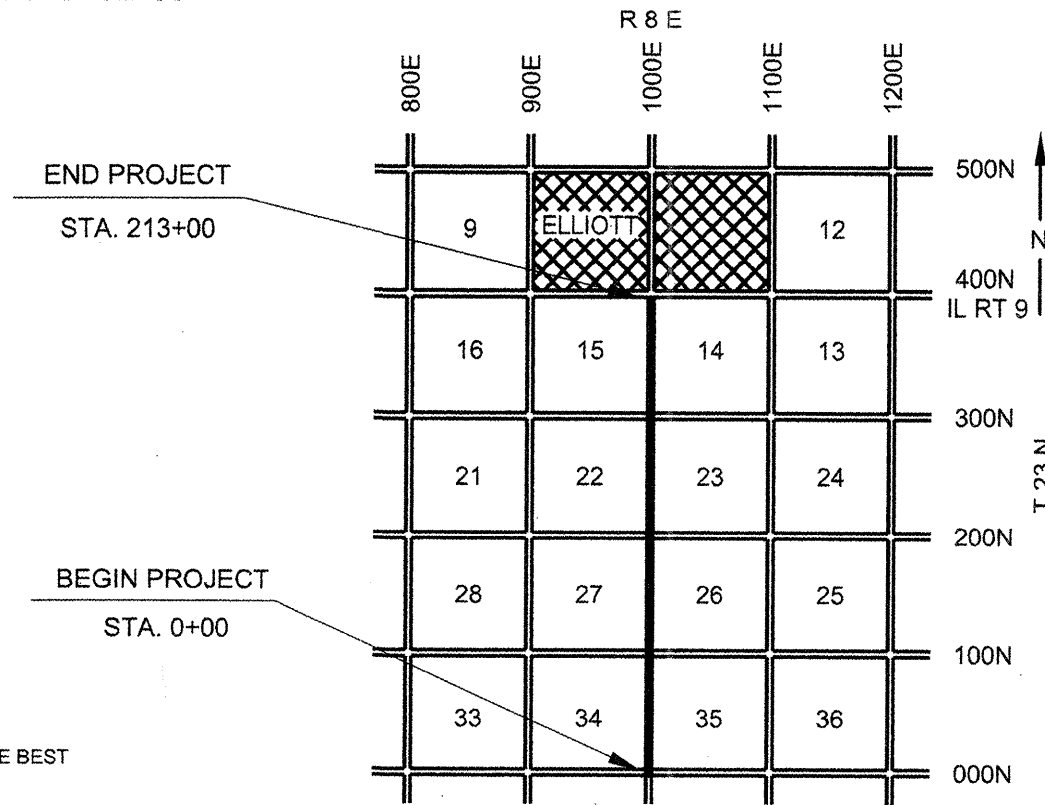
- 701301-03 LANE CLOSURE 2 LANE, 2 WAY, SHORT TIME OPERATIONS
- 701306-02 LANE CLOSURE 2 LANE, 2 WAY, SLOW MOVING OPERATIONS - DAY ONLY FOR SPEEDS \geq 45 MPH
- 701311-03 LANE CLOSURE 2 LANE, 2 WAY, MOVING OPERATIONS - DAY ONLY
- 701901-01 TRAFFIC CONTROL DEVICES
- 780001-02 TYPICAL PAVEMENT MARKINGS

STATE OF ILLINOIS
DEPARTMENT OF TRANSPORTATION
**PLANS FOR
PROPOSED LOCAL AGENCY IMPROVEMENT
FEDERAL-AID SECONDARY PROJECT**

C.H. 4
F.A.S. ROUTE 339 SECTION 09-00113-00-RS FORD COUNTY
PROJECT RS-0339(111)
JOB NO. C-93-110-09

FAS NO.	SECTION	COUNTY	TOTAL SHEETS	SHEET NO.
339	09-00113-00-RS	FORD	3	1

PROJECT RS - 0339(111)
CONTRACT # 87399



UTILITIES

UTILITIES ON THIS SECTION AT VARIOUS LOCATIONS INCLUDES TO THE BEST OF OUR KNOWLEDGE:

- VERIZON TELEPHONE COMPANY (UNDERGROUND)
- OVERHEAD POWER - AMEREN CIPS
- UNDERGROUND GAS - NICOR

CONTRACTORS OR SUBCONTRACTORS SHALL CONTACT J.U.L.I.E. (1-800-892-0123) AT LEAST 72 HOURS PRIOR TO ANY EXCAVATION OR DRIVING FOR UTILITIES LOCATION

JOB NO. C-93-110-09
CONTRACT NO. 87399

GROSS LENGTH = 21,300' = 4.03 MI.
NET LENGTH = 21,300' = 4.03 MI.

THE PLANS FOR THIS SECTION WERE APPROVED BY THE DEPARTMENT AS SECTION 29-Q-1, SECTION 90-00067-00-RS, SECTION 94-00075-00-RS & SECTION 09-00113-00-RS
FUNCTIONAL CLASSIFICATION: MAJOR COLLECTOR

Gregory L. Perkinson
ILLINOIS PROFESSIONAL NO. 062-035801

EXPIRES 11-30-2009

CURRENT (2009) ADT = 1050 - 88% PC
7% SU
5% MU
DESIGN ADT (2019) = 1150
DESIGN SPEED = 50 MPH



THE ACCEPTANCE OF THIS PROJECT IS BASED ON THE MINIMUM DESIGN CRITERIA UNDER 3R GUIDELINES.

APPROVED	<u>3/24/09</u> <i>Gregory L. Perkinson</i> FORD COUNTY, COUNTY ENGINEER
PASSED	<u>MARCH 30, 2009</u> <i>Keneth L. Fry</i> DISTRICT 3 ENGINEER OF LOCAL ROADS & STREETS
Releasing for Bid Based on Limited Review	<u>MARCH 30, 2009</u> <i>George F. Ryan</i> DEPUTY DIRECTOR OF HIGHWAYS, REGION 2 ENGINEER STATE OF ILLINOIS DEPARTMENT OF TRANSPORTATION