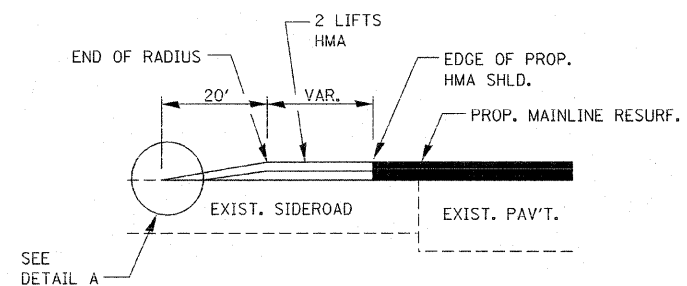
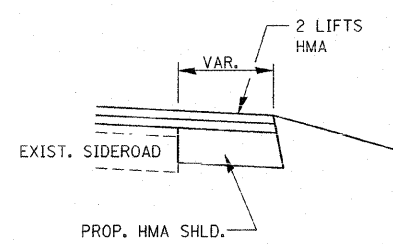


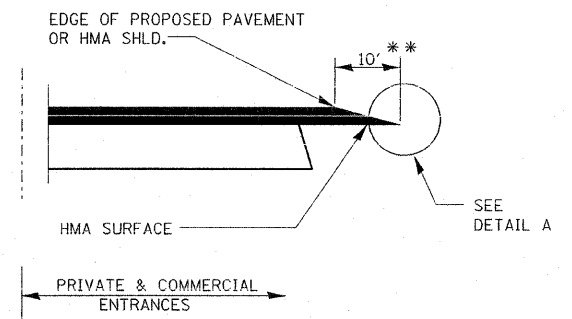
SIDEROAD DETAIL



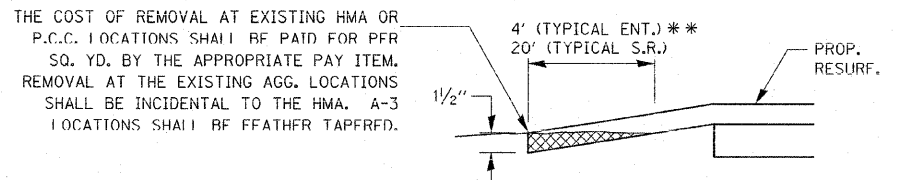
SECTION B-B



SECTION C-C

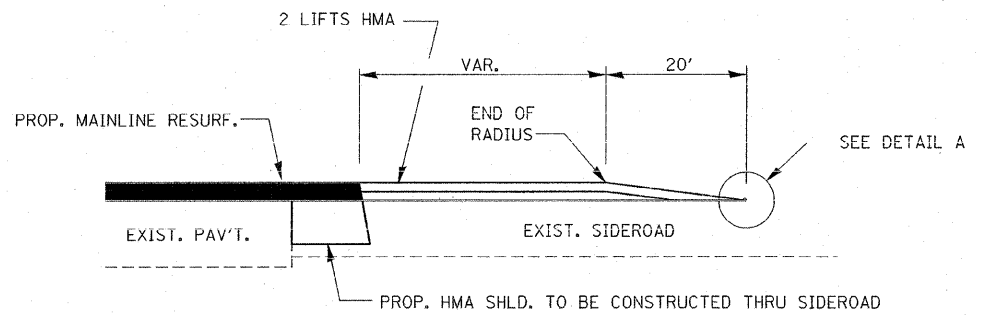


SECTION A-A
DETAILS AT ENTRANCES

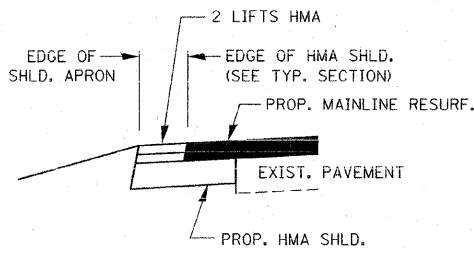


DETAIL A

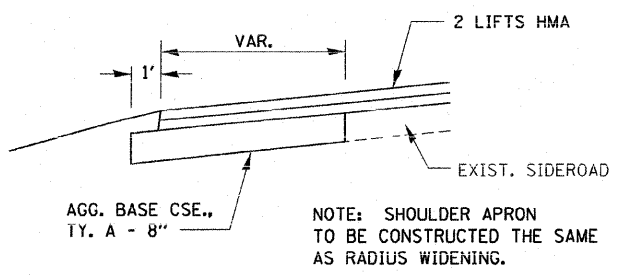
** PROPOSED HMA RESURFACING AT PUBLIC EDUCATIONAL FACILITY ENTRANCES SHALL BE EXTENDED TO THE RIGHT-OF-WAY LIMITS.



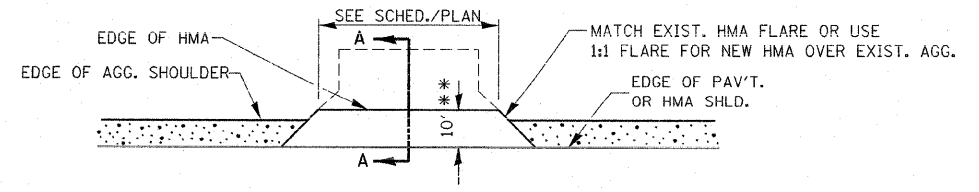
SECTION E-E



SECTION D-D



SECTION F-F



PLAN AT PRIVATE & COMMERCIAL ENTRANCES
(DO NOT RESURFACE FIELD ENTRANCES)

FILE NAME * #FILE#	USER NAME * #USER#	DESIGNED - DRAWN -	REVISED - REVISED -	STATE OF ILLINOIS DEPARTMENT OF TRANSPORTATION	DETAILS				F.A. RTE. 5345	SECTION 09-00139-01-RS	COUNTY DEKALB	TOTAL SHEETS 19	SHEET NO. 17
	PLOT SCALE * #SCALE#	CHECKED -	REVISED -		SCALE:	SHEET NO.	OF	SHEETS	STA.	TO STA.	CONTRACT NO. 87400		
	PLOT DATE * #DATE#	DATE -	REVISED -		FED. ROAD DIST. NO. [ILLINOIS] FED. AID PROJECT								