

INDEX OF SHEETS

- 1. COVER SHEET
- 2. SUMMARY OF QUANTITIES, ROADWAY DETAILS
- 3. PLAN & PROFILE
- 4. GENERAL PLAN & ELEVATION
- 5. SUPERSTRUCTURE
- 6. SUPERSTRUCTURE DETAILS
- 7. BRIDGE RAILING
- 8. WEST ABUTMENT
- 9. EAST ABUTMENT
- 10. PILE DETAIL

- //. CROSS SECTIONS
- 12. EROSION CONTROL PLAN

LIST OF HIGHWAY STANDARDS

- STD.000001-05 Standard Symbols, Abbreviations, and Patterns
- STD.280001-04 Temporary Erosion Control Systems
- STD.515001-03 Name Plate for Bridges
- STD.701006-03 Off Road Operations, ect
- STD.701011-02 Off Road Moving Operations, ect
- STD.701301-03 Lane Closure, 2L 2W, Short time Operations
- STD.701901-01 Traffic Control Devices
- BLR.21-8 Typical Applications of Traffic Control Devices

SCALES:

- PLAN: 1"=N/A
- PROFILE HOR.: 1"=N/A
- PROFILE VERT: 1"=N/A'
- CROSS SECTIONS VERT: 1"=N/A
- CROSS SECTIONS HOR.: 1"=N/A

DESIGN INFORMATION

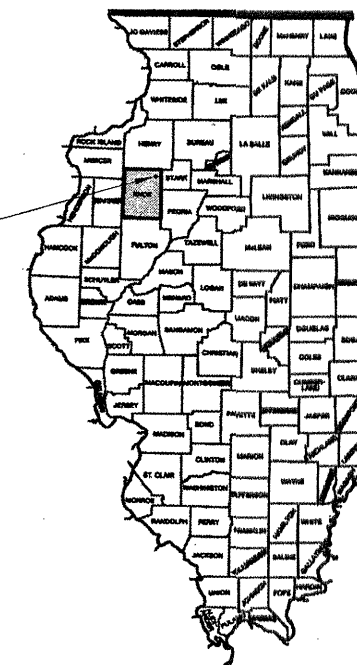
- NET LENGTH OF SECTION: 300.00' (0.057mi)
- ADT= 225
- FUNCTIONAL CLASSIFICATION: LOCAL ROAD
- DESIGN SPEED: 35 MPH
- DESIGN POLICY: RURAL
- VARIANCES GRANTED: NONE
- COMMITMENTS: NONE

CATALOG #033321-00
J.U.L.I.E. 1-800-892-0123

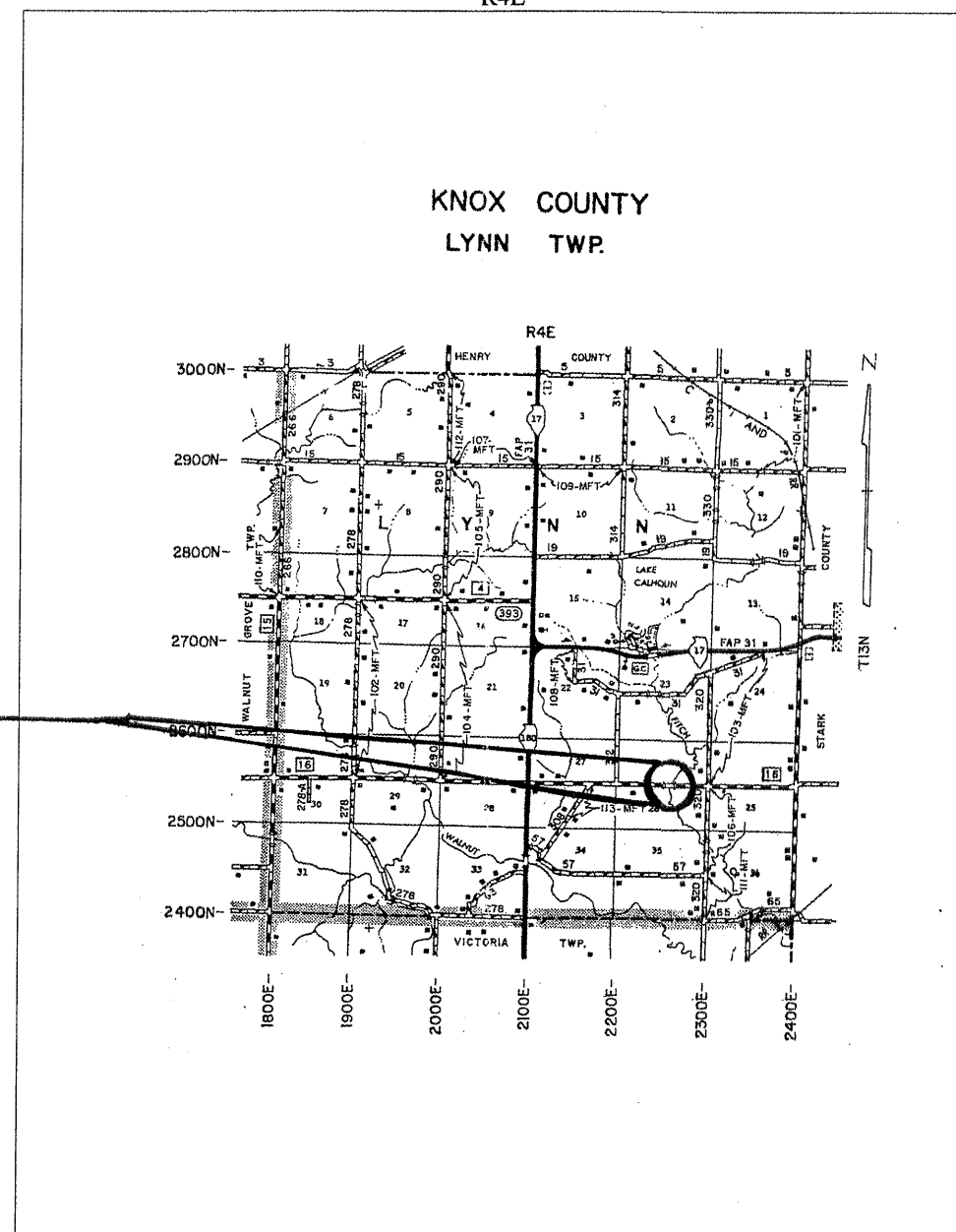
STATE OF ILLINOIS
 DEPARTMENT OF TRANSPORTATION
 BUREAU OF LOCAL ROADS & STREETS
PLANS FOR PROPOSED COUNTY HIGHWAY IMPROVEMENTS

CH-16 OVER FITCH CREEK
 SECTION 05-00096-01-BR
 PROJECT # ARA (0095) 126
 C-94-126-06
 R4E

COUNTY	ROUTE	CONTRACT	SEC.	SHEET
KNOX	CH-16	89427	05-00096-01-BR	1 OF 12



PROJECT
LOCATION



End Construction STA.11+50
 Construct P.P.C. Deck Beam Bridge
 Centerline STA.10+00
 Existing Structure #048-3216
 Proposed Structure #048-3389
 Begin Construction STA.8+50

LYNN TWP

DUANE J. RATERMANN
 62-051696
 REGISTERED
 PROFESSIONAL
 ENGINEER
 ILLINOIS 4/2/09

Duane J. Ratermann
 II. Prof. Eng. #062-051696
 Expires 11-30-09

APPROVED _____ 20____ _____ Road Commissioner
APPROVED <i>April 2 20 09</i> <i>Duane J. Ratermann</i> County Engineer
PASSED <i>April 9 20 09</i> <i>D. C. D.</i> District Four Engineer of Local Roads & Streets
Releasing for Bid Based on <i>APRIL 9 20 09</i> Limited Review <i>[Signature]</i> Deputy Director of Highways, Region Three Engineer
STATE OF ILLINOIS DEPARTMENT OF TRANSPORTATION