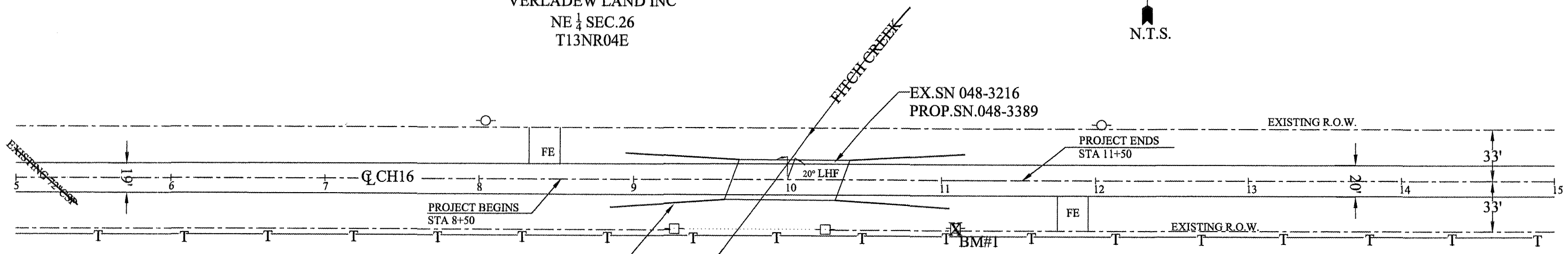
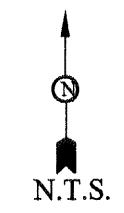


BM- ELEV. 100.0'  
 SPIKE IN TELE. POLE  
 STA. 11+10 RT.

COUNTY	ROUTE	CONTRACT	SHEET
KNOX	CH16	89427	3 of 12

SEC. 05-00096-01-BR

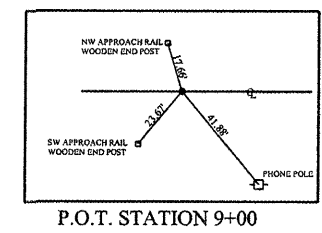
VERLADEW LAND INC  
 NE 1/4 SEC.26  
 T13NR04E



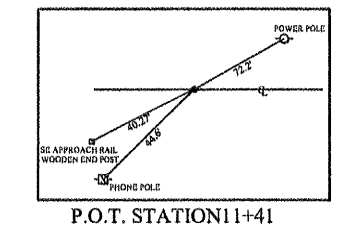
Approach rail on all four corners  
 to be removed and not replace.

**LEGEND**

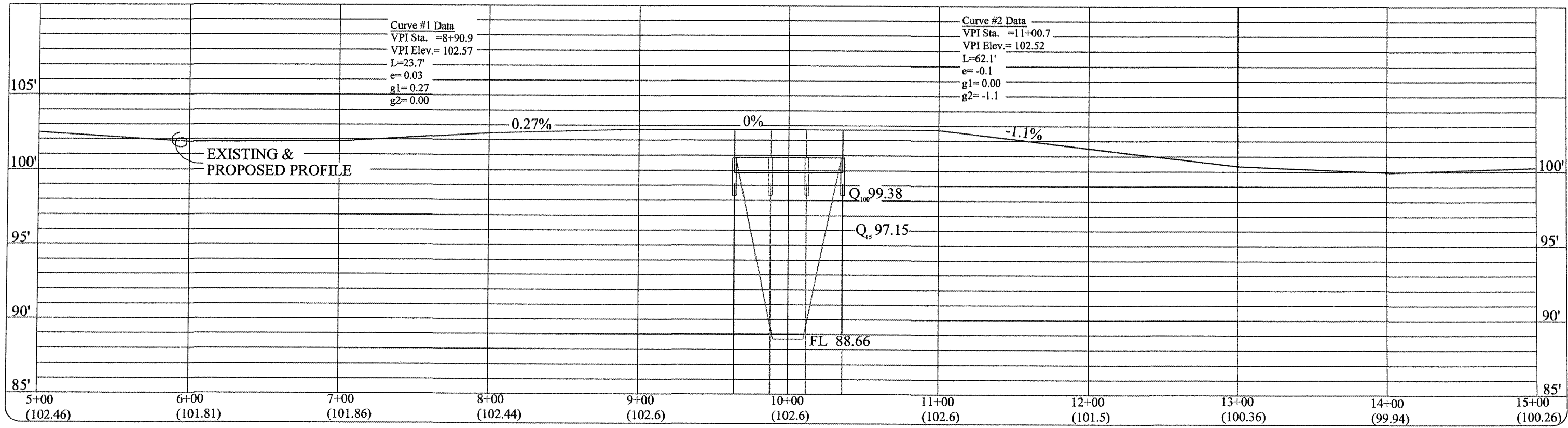
	Phone
	Phone Pole
	Power Pole
	Overhead Phone



**UTILITIES:**  
 Corn Belt Energy 1-800-879-0339  
 Midcentury 800-365-0525



APPROACHES AND PERMANENT SEEDING BY KNOX COUNTY



Not to Scale