

**INDEX OF SHEETS**

1	COVER SHEET
2	GENERAL NOTES, BENCHMARKS, LEGEND
3	SUMMARY OF QUANTITIES
4	TYPICAL SECTION & DRIVEWAY DETAILS
5-13	SCHEDULE OF QUANTITIES
14	HORIZONTAL CONTROL
15-23	COUNTY HIGHWAY #1 - PLAN & PROFILES
24	TR 1700N - INTERSECTION DETAIL
25	COUNTY HIGHWAY #18 - INTERSECTION DETAIL
26	TR 1900N - INTERSECTION DETAIL
27-34	DOUBLE BOX CULVERT PLANS
35-43	TRIPLE BOX CULVERT PLANS
44-45	DETAILS
46-68	COUNTY HIGHWAY #1 - CROSS SECTIONS
69-70	TR 1700N - CROSS SECTIONS
71-72	COUNTY HIGHWAY #18 - CROSS SECTIONS
73-74	TR 1900N - CROSS SECTIONS

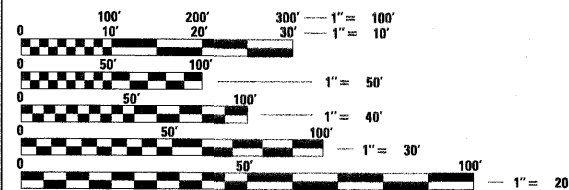
**HIGHWAY STANDARDS**

280001-04	TEMPORARY EROSION CONTROL SYSTEMS
515001-03	NAME PLATES FOR BRIDGES
602401-02	MANHOLE, TYPE A
701901-01	TRAFFIC CONTROL DEVICES
B.L.R. 21-8	TYP. APP. CONST. ON RURAL LOCAL HIGHWAYS
B.L.R. 22-6	TYP. APP. CONST. ON RURAL LOCAL HIGHWAYS (TWO LANE, TWO WAY) (ROAD CLOSED TO THRU TRAFFIC)
B.L.R. 24-2	MAILBOX TURNOUT, LOCAL SYSTEM
540401-D4	PRECAST CONC. BOX CULVERTS, END SECTION, & DROP BOX END SECTION

**UTILITIES**

AMEREN CILCO (GAS & ELECTRIC)  
110 W. MONARCH ST.  
PEORIA, IL 61602  
KENT KOWALSKIE 309-264-5575 (GAS)  
TOM KOEPEL 309-693-4702 (ELECTRIC)

VERIZON WIRELESS (FIBER OPTIC)



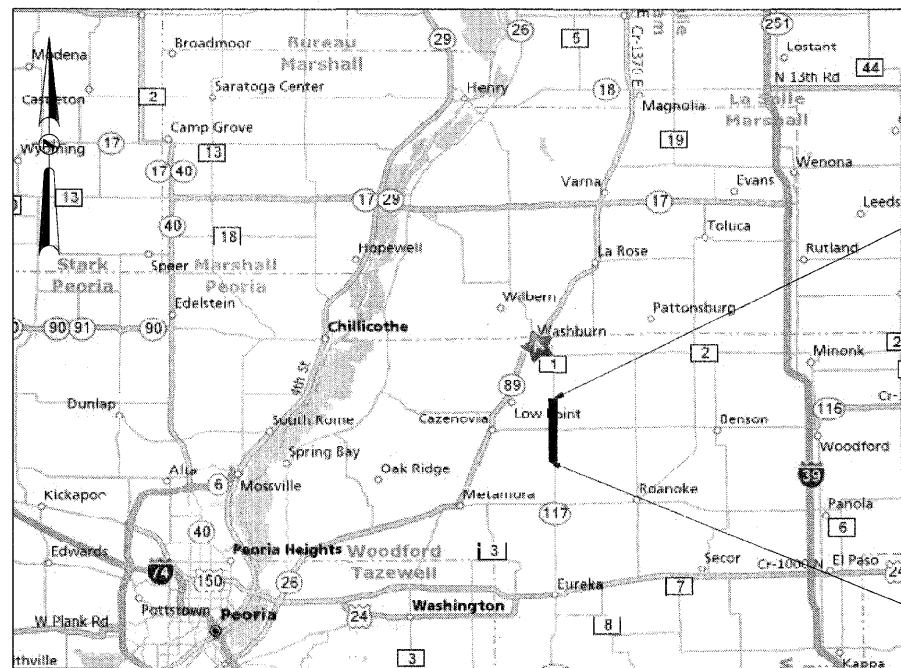
FULL SIZE PLANS HAVE BEEN PREPARED USING STANDARD ENGINEERING SCALES. REDUCED SIZED PLANS WILL NOT CONFORM TO STANDARD SCALES. IN MAKING MEASUREMENTS ON REDUCED PLANS, THE ABOVE SCALES MAY BE USED.

J.U.L.I.E.  
JOINT UTILITY LOCATION INFORMATION FOR EXCAVATION  
1-800-892-0123

**CONTRACT NO. 89477**

**STATE OF ILLINOIS**  
**DEPARTMENT OF TRANSPORTATION**  
**DIVISION OF HIGHWAYS**  
**PLANS FOR PROPOSED**  
**LOCAL AGENCY IMPROVEMENT**  
**FEDERAL-AID SECONDARY PROJECT**

**COUNTY HIGHWAY 1, F.A.S. ROUTE 358**  
**SECTION: 86-00075-00-AS**  
**PROJECT ARA-RS-0358 (102)**  
**WOODFORD COUNTY**  
**C-94-079-07**



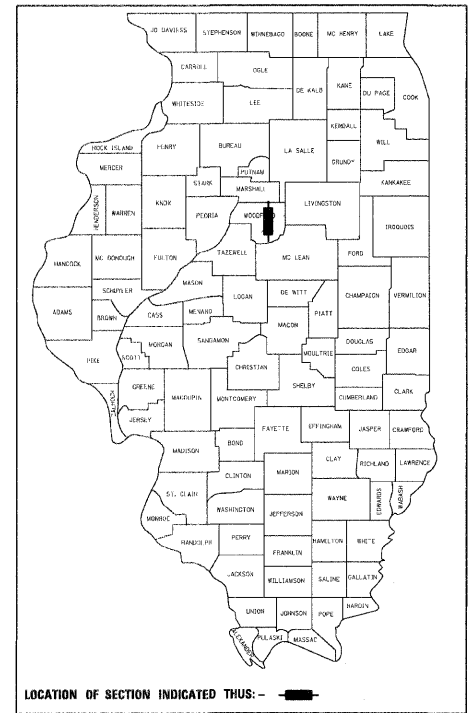
**LOCATION MAP**

(NOT TO SCALE)

LENGTH OF IMPROVEMENT = 11,980 FEET = 2.26 MILE  
FUNCTIONAL CLASSIFICATION: RURAL MAJOR COLLECTOR  
DESIGN SPEED: 50 MPH, POSTED SPEED: 55 MPH  
CURRENT ADT: 850, SU: 7%, MU: 5%  
DESIGN YEAR: 2023, ADT: 1350, DHV: 169, %TRUCKS: 12%

**PROJECT LOCATION**

WEST 1/2 SECTION 6, TOWNSHIP 27 NORTH, RANGE 1 WEST  
EAST 1/2 SECTION 1, TOWNSHIP 27 NORTH, RANGE 2 WEST  
WEST 1/2 SECTIONS 19, 30, 31, TOWNSHIP 28 NORTH, RANGE 1 WEST  
EAST 1/2 SECTIONS 24, 25, 36, TOWNSHIP 28 NORTH, RANGE 2 WEST



LOCATION OF SECTION INDICATED THUS: -



APPROVED 4/08 20 09  
*Kevin Barkman*  
WOODFORD COUNTY ENGINEER

STATE OF ILLINOIS  
DEPARTMENT OF TRANSPORTATION  
PASSED 4/8 20 09  
*John J. Walsh*  
DISTRICT FOUR ENGINEER OF LOCAL ROADS & STREETS  
APRIL 8 20 09  
DEPUTY DIRECTOR OF HIGHWAYS, REGION THREE ENGINEER  
RELEASED FOR BID BASED ON LIMITED REVIEW



*Alicia M. Hermann*  
ALICIA M. HERMANN

04/08/2009 DATE 11/30/2009 EXPIRES



**HERMANN & ASSOCIATES, LLC**  
CONSULTING ENGINEERS

5835 NORTH GALENA ROAD  
PEORIA, ILLINOIS 61614  
PHONE: (309) 687-5566  
FAX: (309) 687-0571  
ILLINOIS PROFESSIONAL DESIGN FIRM NO. 184.004714

PRINTED BY THE AUTHORITY  
OF THE STATE OF ILLINOIS

TRANSPORTATION • MUNICIPAL ENGINEERING • LAND DEVELOPMENT  
ASBESTOS INSPECTION • CONSTRUCTION OBSERVATION