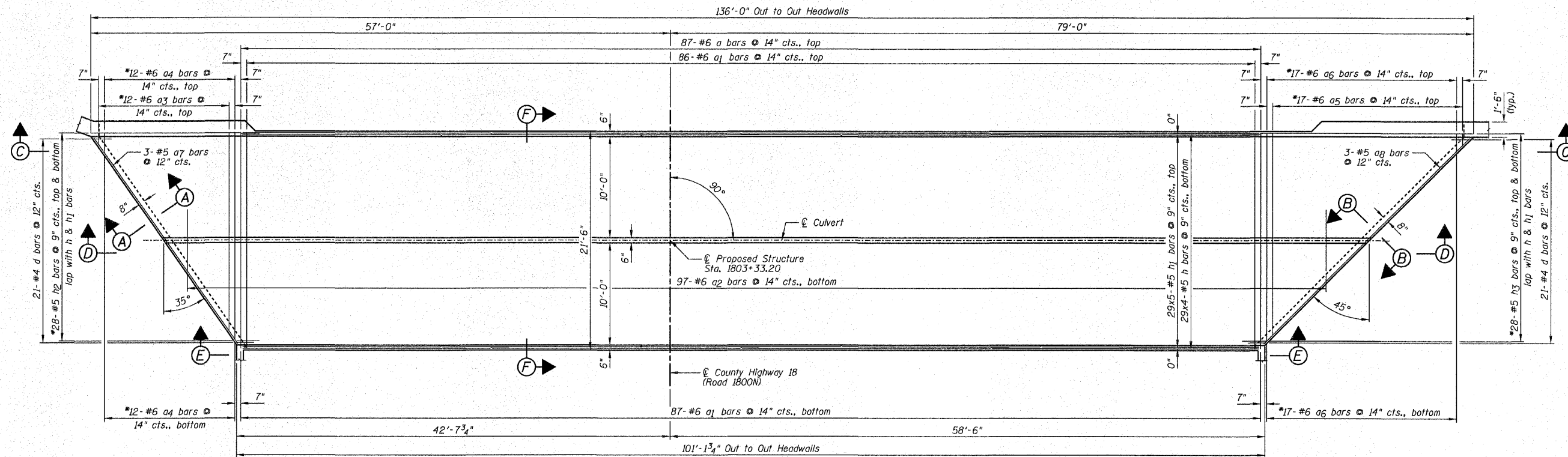
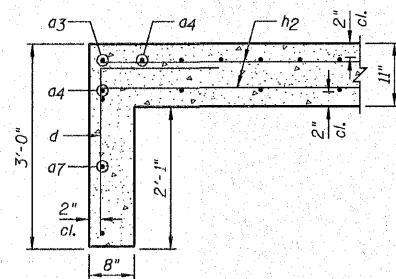


F.A.S. RTE.	SECTION	COUNTY	TOTAL SHEETS	SHEET NO.
358	86-00075-00-AS	WOODFORD	74	29
STA.		TO STA.		
FED. ROAD DIST. NO.	ILLINOIS	FED. AID PROJECT		

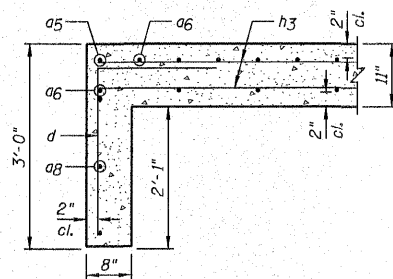


BOTTOM SLAB PLAN

*See Note 2.



SECTION A-A



SECTION B-B

NOTES:

- 1.) Work this sheet with Sheets B1, B2 and B4-B8.
- 2.) Order a3, a4, a5, a6, h2 & h3 bars full length, cut according to the Bar Cutting Diagram on Sheet B2. Use remainder of bars in top slab.
- 3.) For Bill of Material, see Sheet B2.
- 4.) For bar lap length, see the General Notes on Sheet B2.

REVISIONS	
NAME	DATE

BOTTOM SLAB REINFORCEMENT PLAN

F.A.S. 358 (C.H. 18)
SECTION 86-00075-00-AS
WOODFORD COUNTY
STATION 1803+33.20
STRUCTURE NO. 102-5035

DESIGNED BY: MSW DRAWN BY: DJM
DATE: 04/08/09 CHECKED BY: MSW