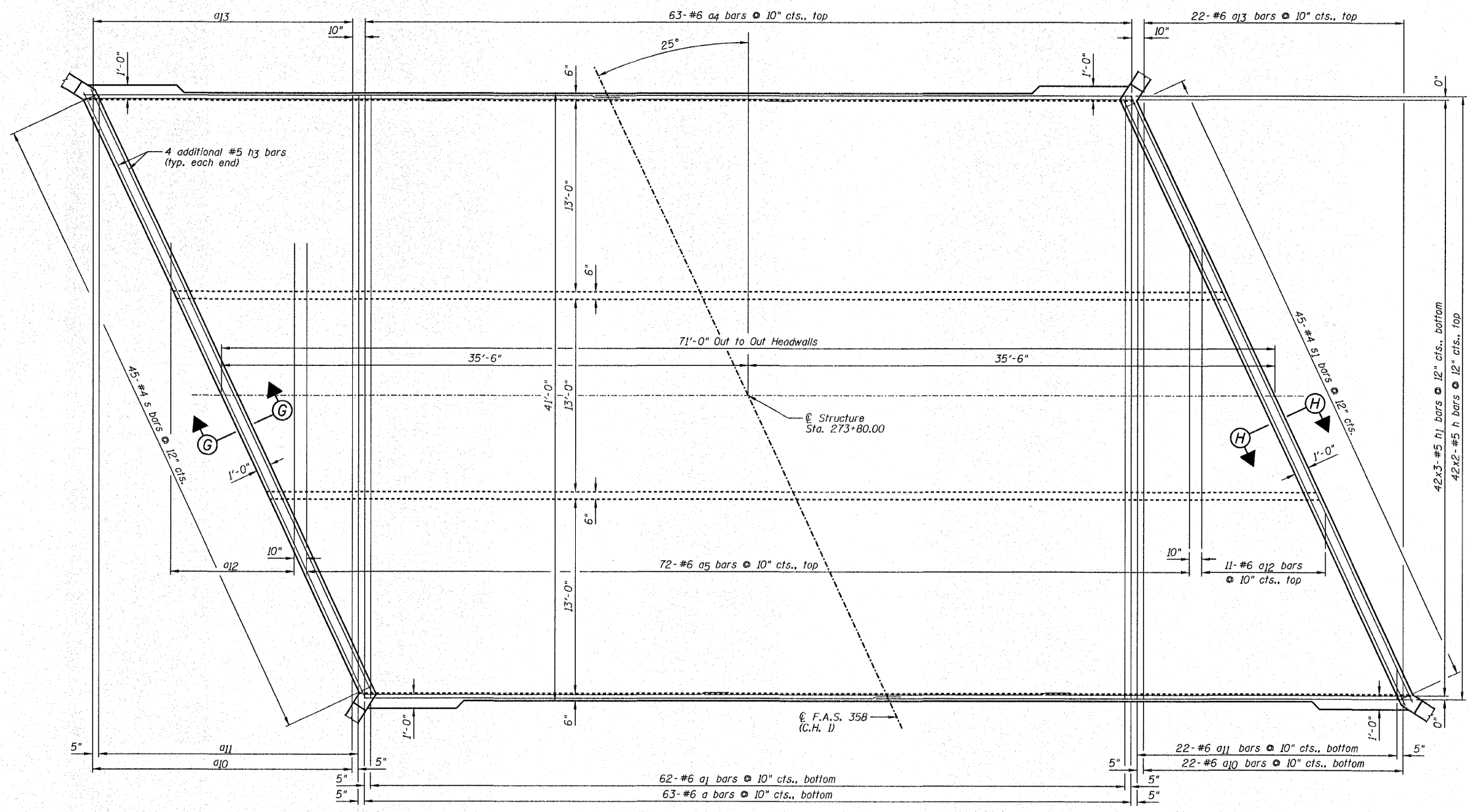
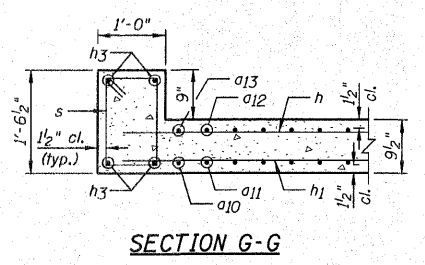


F.A.S. NO.	SECTION	COUNTY	TOTAL SHEETS	SHEET NO.
358	86-00075-00-AS	WOODFORD	74	38
STA.		TO STA.		
FED. ROAD DIST. NO.	ILLINOIS	FED. AID PROJECT		

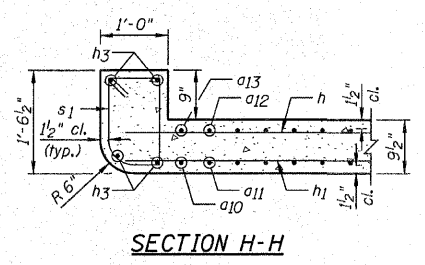
SHEET NO. C4
OF 9 SHEETS



TOP SLAB PLAN



SECTION G-G



SECTION H-H

NOTES:

- 1.) Work this sheet with Sheets C1-C3, C5 & C6.
- 2.) Order a10, a11, a12, a13 bars full length, cut according to the Bar Cutting Diagram on Sheet C2. Use remainder of bars in opposite end.
- 3.) For Bill of Material, see Sheet C2.
- 4.) For bar lap length, see the General Notes on Sheet C2.

REVISIONS	
NAME	DATE

TOP SLAB REINFORCEMENT PLAN
 F.A.S. 358 (C.H. 1) OVER UNNAMED
 TRIBUTARY TO RICHLAND CREEK
 SECTION 86-00075-00-AS
 WOODFORD COUNTY
 STATION 273+80.00 STRUCTURE NO. 102-5034
 DESIGNED BY: BJR DRAWN BY: DJM
 DATE: 04/08/09 CHECKED BY: MSW/JML