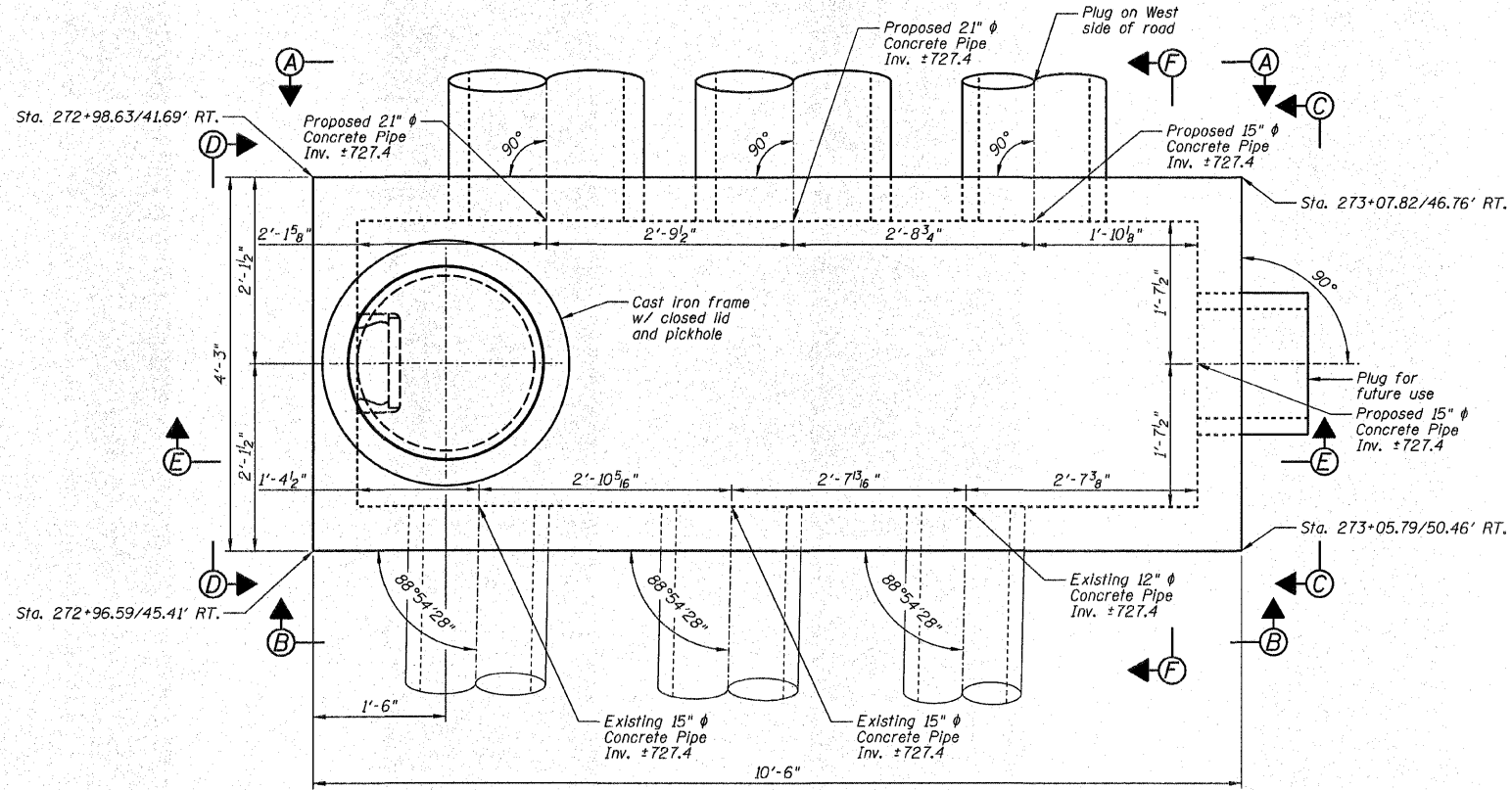
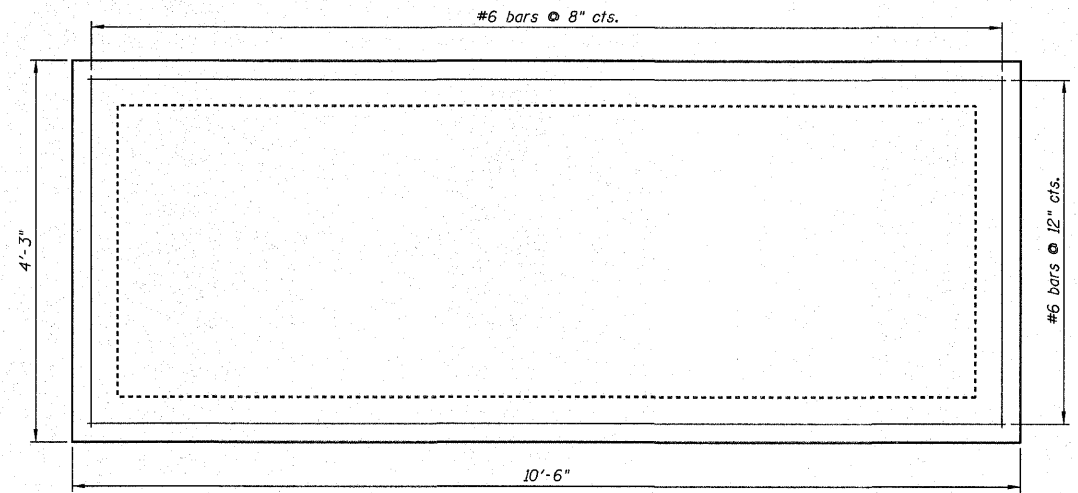


F.A.S. RTE.	SECTION	COUNTY	TOTAL SHEETS	SHEET NO.
358	86-00075-00-AS	WOODFORD	74	42
STA.		TO STA.		
FED. ROAD DIST. NO.		ILLINOIS FED. AID PROJECT		



LAYOUT PLAN



TOP & BOTTOM SLAB REINFORCEMENT PLAN

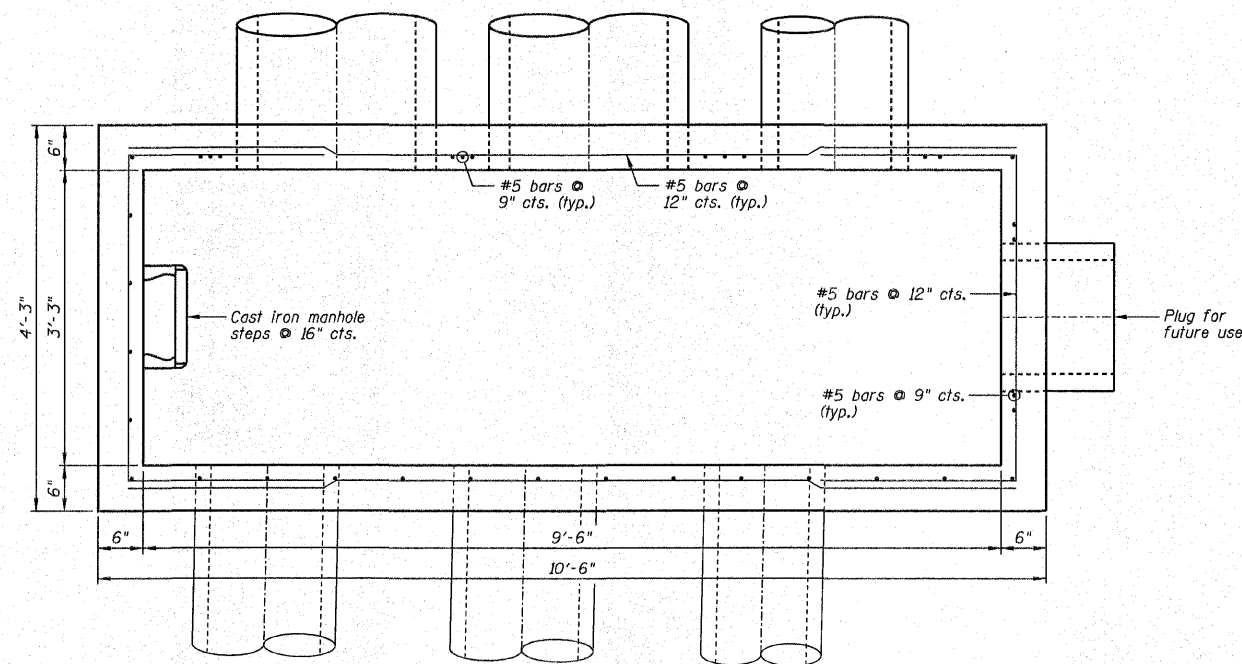
TOTAL BILL OF MATERIAL - JUNCTION BOX

ITEM	UNIT	TOTAL
Pipe Culverts, Class A, Type 2 15"	Foot	100
Pipe Culverts, Class A, Type 2 18"	Foot	220
Pipe Culverts, Class A, Type 2 21"	Foot	198
Field Tile Junction Vaults, 3' Dia.	Each	2
Junction Box	L. Sum	1

GENERAL NOTES

- Exposed edges shall be beveled $\frac{3}{4}$ ".
- Reinforcement Bars shall conform to the requirements of ASTM A706, Grade 60 (IL Modified). See Special Provision.
- For backfilling and embankment, see Standard Specifications and Roadway Plans.
- It shall be the responsibility of the Contractor to divert the stream flow and any storm sewer flow during construction in order to keep the construction areas free of water. The method of water diversion shall be subject to the approval of the Engineer.
- Contractor to field locate all utilities before starting construction and protect all utilities. Contractor to submit information regarding protecting utilities to the Engineer before starting construction.
- There will be no additional compensation should any reinforcement need to be cut or bent in the field.
- Construction Joints shall be bonded in accordance with Section 503.09 (b) of the Standard Specifications.
- Minimum bar lap lengths are as follows, unless noted otherwise.

Bar Size	Min. Lap Length
#4	1'-9"
#5	2'-2"
#6	2'-8"
#7	3'-9"
#8	4'-2"
#9	4'-8"



PLAN WITH TOP SLAB REMOVED

NOTES:

- Work this sheet with Sheets C9.
- Match existing elevations.

REVISIONS	
NAME	DATE

JUNCTION BOX DETAILS

F.A.S. 358 (C.H. 1)
SECTION 06-00075-00-BR
WOODFORD COUNTY
STATION 273+01.83

DESIGNED BY: BJR
DATE: 04/08/09

DRAWN BY: DJM
CHECKED BY: MSW/JML