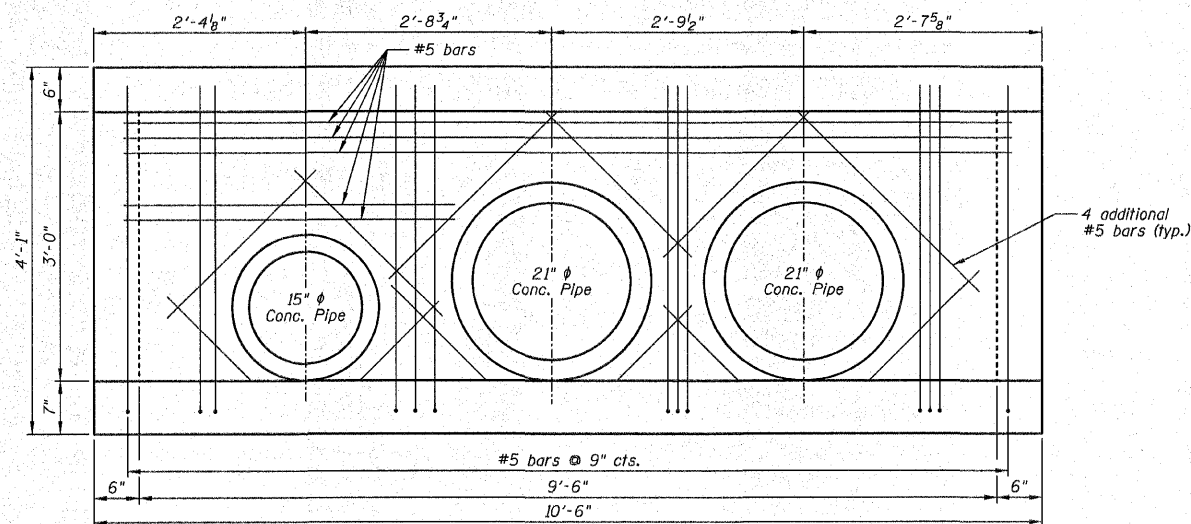
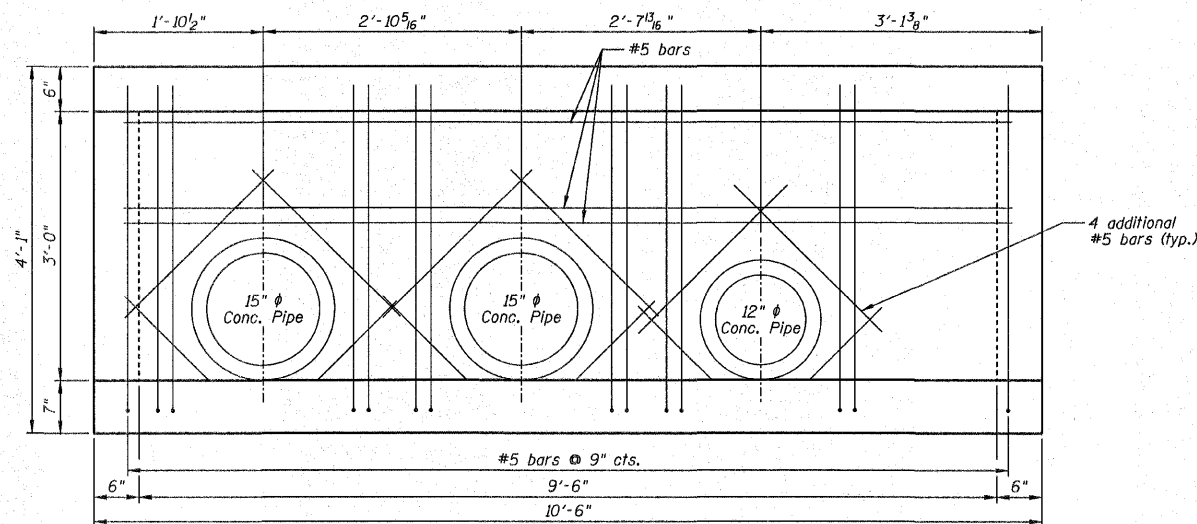


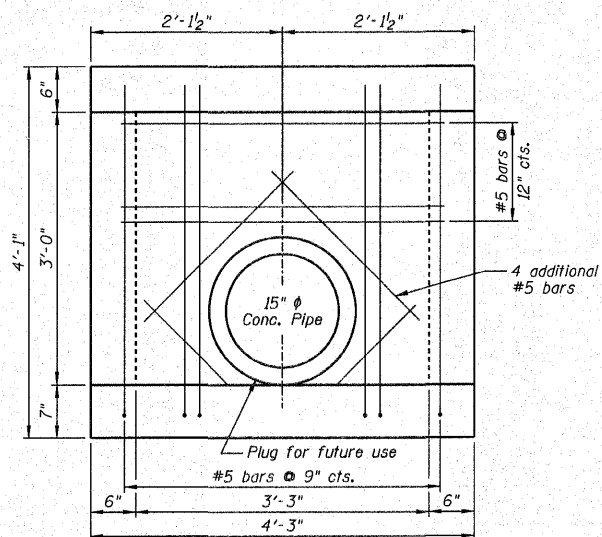
| F.A.S. RTE. | SECTION | COUNTY | TOTAL SHEETS | SHEET NO. |
|---------------------|----------------|------------------|--------------|-----------|
| 358 | 06-00075-00-AS | WOODFORD | 74 | 43 |
| STA. | | TO STA. | | |
| FED. ROAD DIST. NO. | ILLINOIS | FED. AID PROJECT | | |



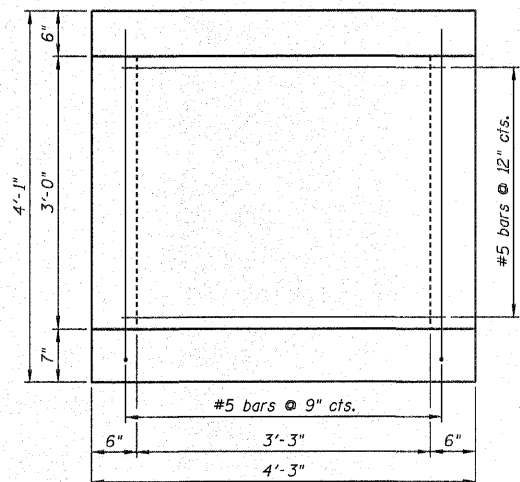
VIEW A-A



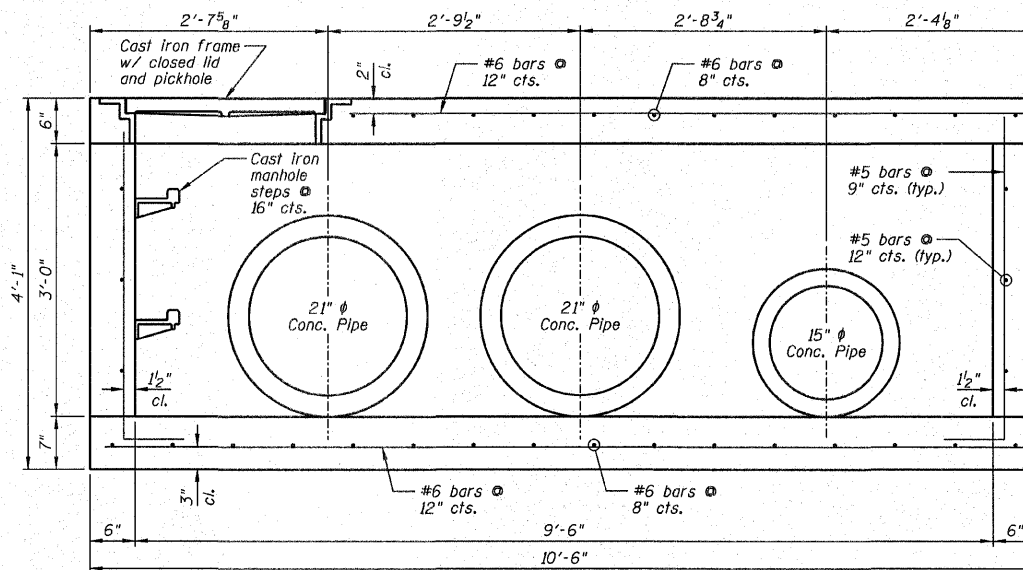
VIEW B-B



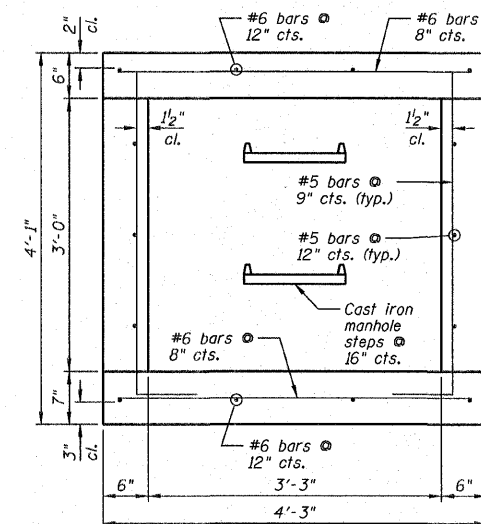
VIEW C-C



VIEW D-D



SECTION E-E



SECTION F-F

NOTES:

- 1.) Work this sheet with Sheets C8.
- 2.) Match existing elevations.

| REVISIONS | |
|-----------|------|
| NAME | DATE |
| | |
| | |
| | |
| | |
| | |
| | |
| | |
| | |
| | |
| | |

JUNCTION BOX DETAILS

F.A.S. 358 (C.H. 1)
SECTION 06-00075-00-BR
WOODFORD COUNTY
STATION 273+01.83

DESIGNED BY: BJR
DATE: 04/08/09

DRAWN BY: DJM
CHECKED BY: MSW/JML