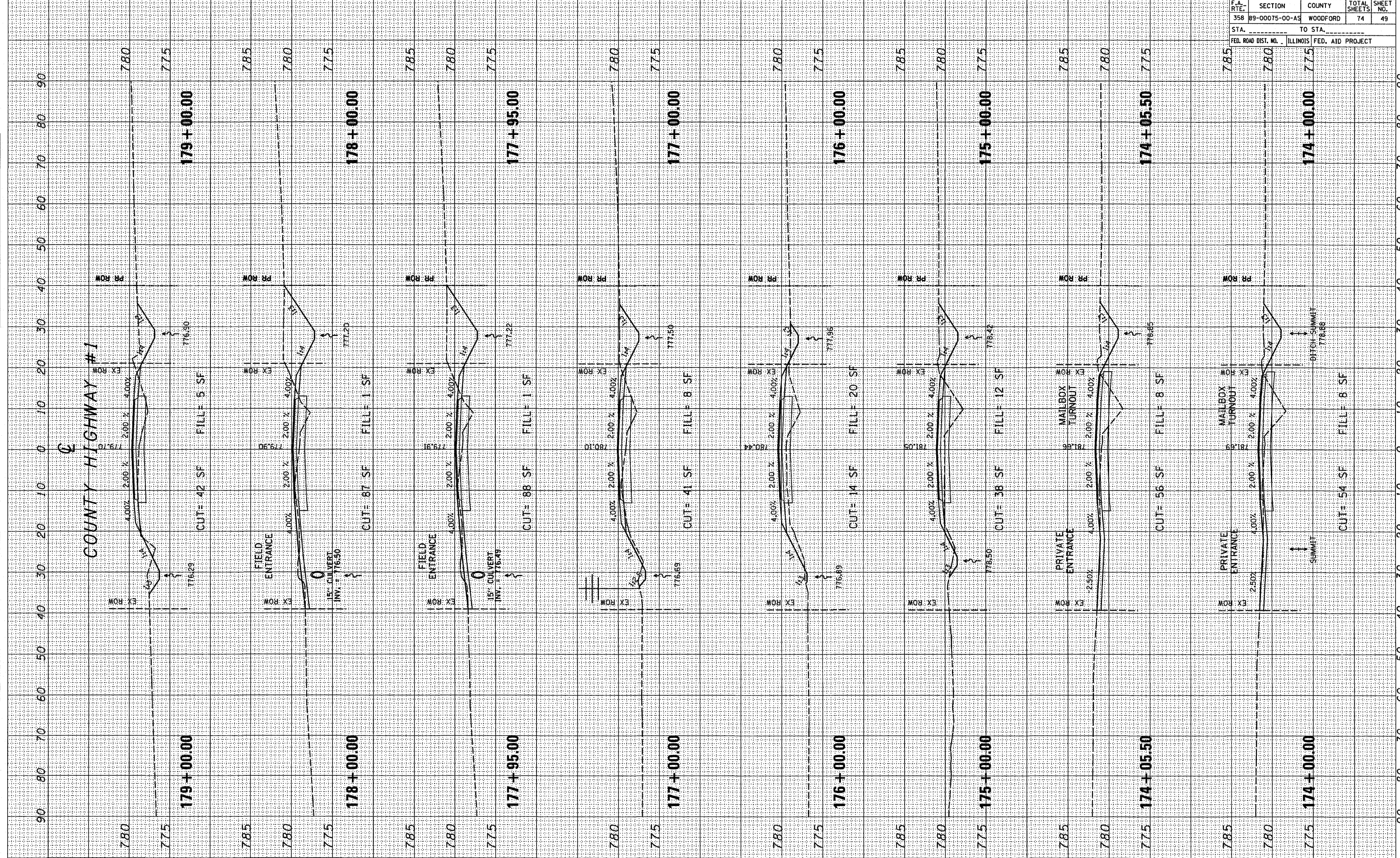


F.A. RTE.	SECTION	COUNTY	TOTAL SHEETS	SHEET NO.
35B	89-00075-00-AS	WOODFORD	74	49
STA.		TO STA.		
FED. ROAD DIST. NO.		ILLINOIS FED. AID PROJECT		

FINAL SURVEY	DATE
SURVEYED	BY
TEMPLATE	
NOTE BOOK	
AREAS CHECKED	
NO.	

ORIGINAL SURVEY	DATE
SURVEYED	BY
TEMPLATE	
NOTE BOOK	
AREAS CHECKED	
NO.	

PLOT DATE = 04/25/08
 FILE NAME = 87LE14
 PLOT SCALE = 85/3248
 USER NAME = JWB/RS



COUNTY HIGHWAY #1 CROSS SECTIONS

lastsheet.dwg 1700-1800.rvt 4/15/2008 2:56:13 PM