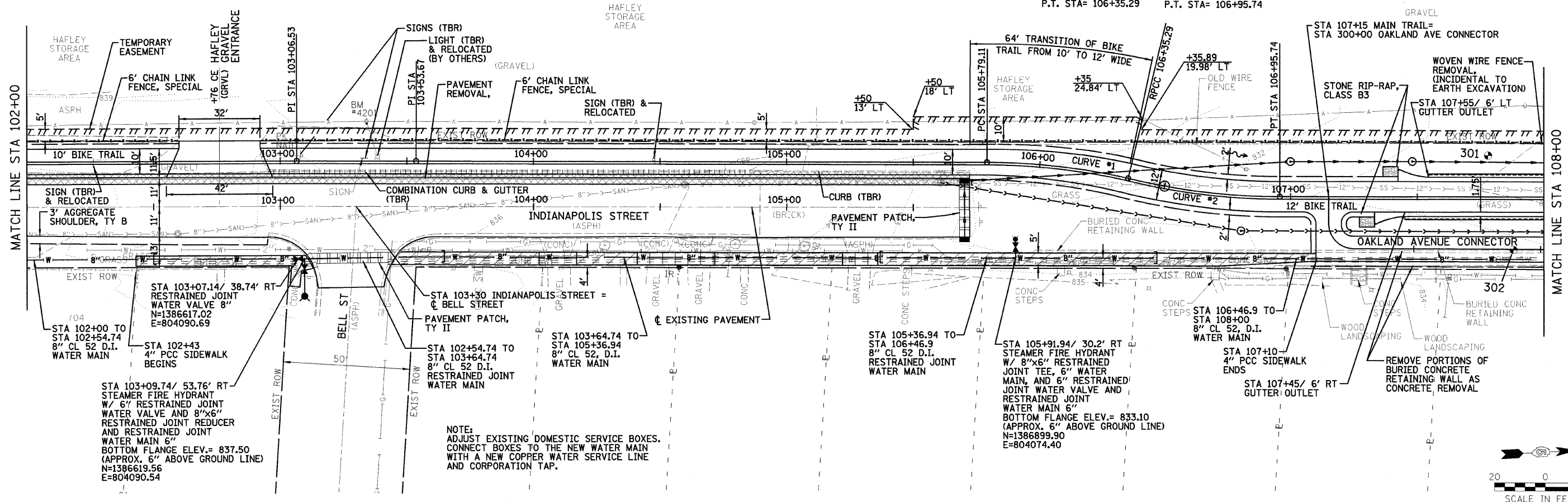


F.A. RTE.	SECTION	COUNTY	TOTAL SHEETS	SHEET NO.
05-00333-00-BT	McLEAN	56	9	
STA. 102+00 TO STA. 108+00				
FED. ROAD DIST. NO. ILLINOIS		FED. AID PROJECT		

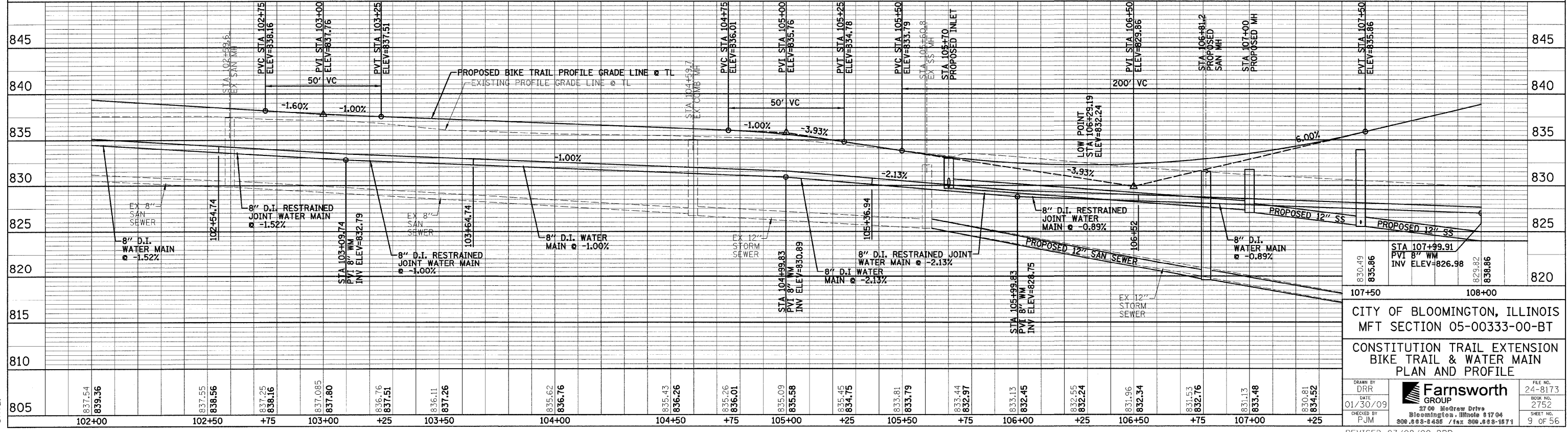
**NOTES:**  
 1. ALL STATIONING AND OFFSETS ARE BASED UPON THE BIKE TRAIL TRANSIT LINE.  
 2. FOR STORM AND SANITARY SEWER INFORMATION, SEE THE STORM & SANITARY SEWER & PROFILE SHEETS.

**CURVE #1**  
 P.I. STA= 106+07.32  
 Δ= 12°52'31"  
 D= 22°55'06"  
 R= 250'  
 T= 28.21'  
 L= 56.18'  
 E= 1.59'  
 S.E.=  
 P.C. STA= 105+79.11  
 P.T. STA= 106+35.29

**CURVE #2**  
 P.I. STA= 106+65.66  
 Δ= 13°51'14"  
 D= 22°55'06"  
 R= 250'  
 T= 30.37'  
 L= 60.45'  
 E= 1.84'  
 S.E.=  
 P.C. STA= 106+35.29  
 P.T. STA= 106+95.74



**NOTE:**  
 ADJUST EXISTING DOMESTIC SERVICE BOXES. CONNECT BOXES TO THE NEW WATER MAIN WITH A NEW COPPER WATER SERVICE LINE AND CORPORATION TAP.



CITY OF BLOOMINGTON, ILLINOIS  
 MFT SECTION 05-00333-00-BT  
 CONSTITUTION TRAIL EXTENSION  
 BIKE TRAIL & WATER MAIN  
 PLAN AND PROFILE

830.49 835.86	830.82 838.86	830.81 834.52	830.49 835.86	830.82 838.86
107+50	108+00		107+50	108+00
DRAWN BY: DRP				
DATE: 01/30/09				
CHECKED BY: PJM				
Farnsworth GROUP				24-8173
2700 Medway Drive Bloomington, Illinois 61704 800.888.4455 / fax 309.888.1871				BOOK NO: 2752
				SHEET NO: 9 OF 56