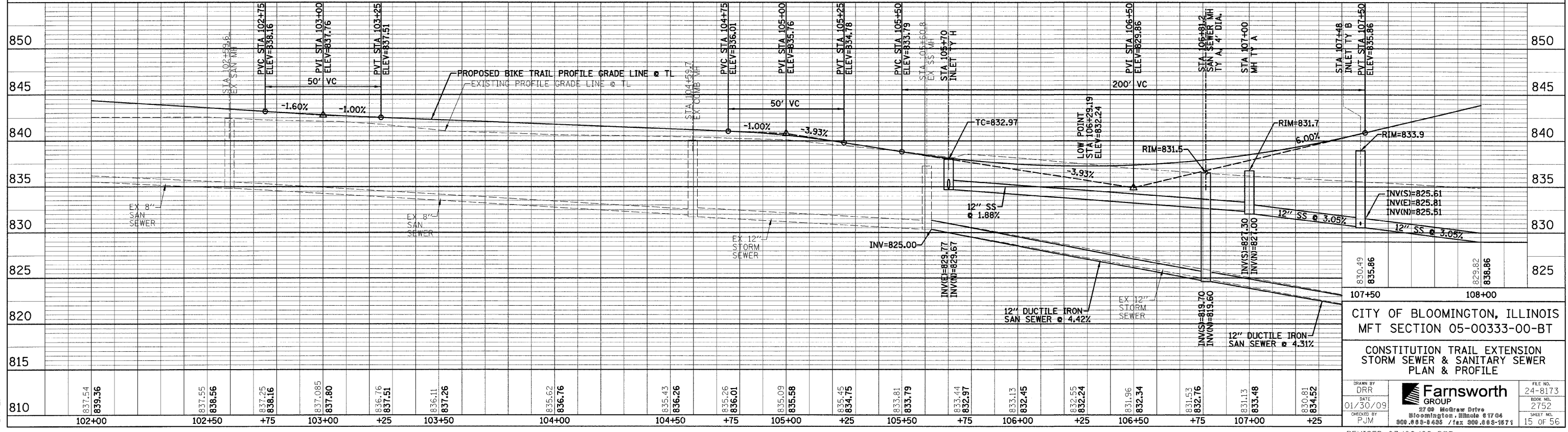
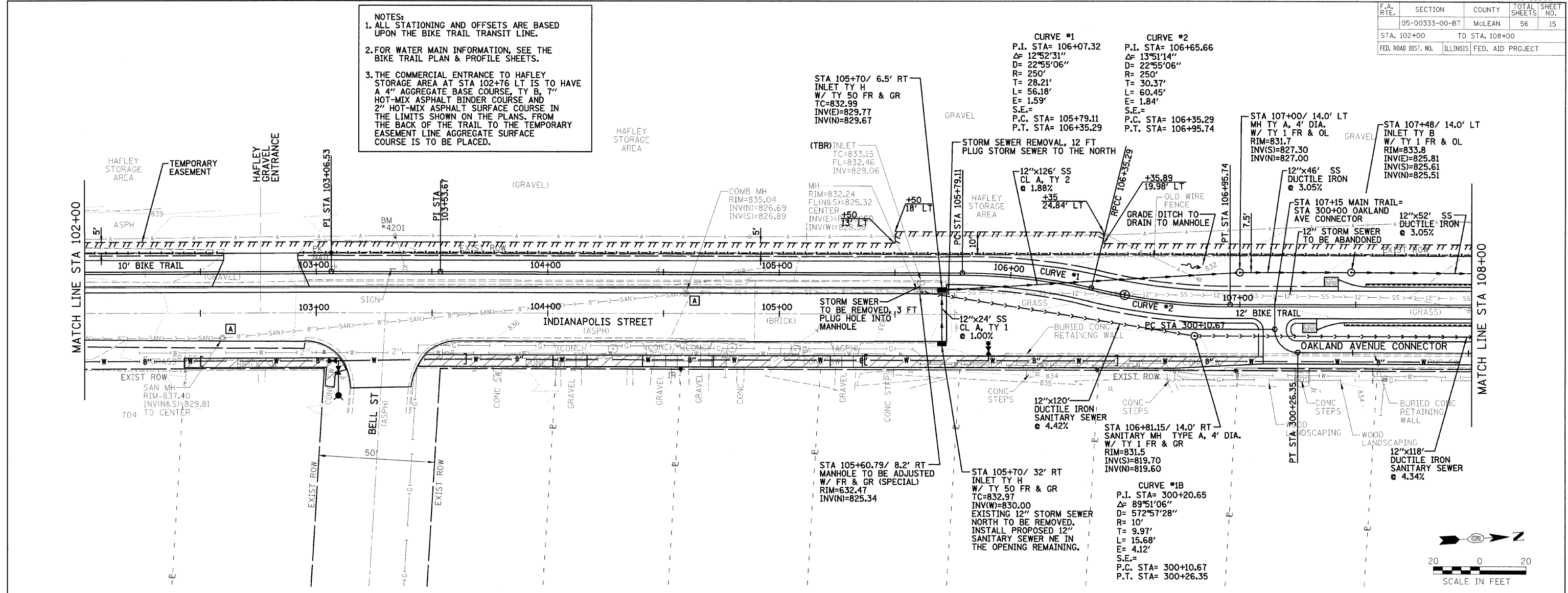


F.A. RTE.	SECTION	COUNTY	TOTAL SHEETS	SHEET NO.
05-00333-00-BT	McLEAN	56	15	
STA. 102+00		TO STA. 108+00		
FED. ROAD DIST. NO.		ILLINOIS FED. AID PROJECT		

NOTES:
 1. ALL STATIONING AND OFFSETS ARE BASED UPON THE BIKE TRAIL TRANSIT LINE.
 2. FOR WATER MAIN INFORMATION, SEE THE BIKE TRAIL PLAN & PROFILE SHEETS.
 3. THE COMMERCIAL ENTRANCE TO HAFLEY STORAGE AREA AT STA 102+76 LT IS TO HAVE A 4" AGGREGATE BASE COURSE, TY B, 7" HOT-MIX ASPHALT BINDER COURSE AND 2" HOT-MIX ASPHALT SURFACE COURSE IN THE LIMITS SHOWN ON THE PLANS. FROM THE BACK OF THE TRAIL TO THE TEMPORARY EASEMENT LINE AGGREGATE SURFACE COURSE IS TO BE PLACED.



CITY OF BLOOMINGTON, ILLINOIS
 MFT SECTION 05-00333-00-BT
 CONSTITUTION TRAIL EXTENSION
 STORM SEWER & SANITARY SEWER
 PLAN & PROFILE

DRAWN BY: DRR
 DATE: 01/30/09
 CHECKED BY: PJM

Farnsworth GROUP
 2700 McGraw Drive
 Bloomington, Illinois 61704
 800.888.9485 / fax 309.888.3871

FILE NO. 24-8173
 BOOK NO. 2752
 SHEET NO. 15 OF 56

REVISED 03/08/09 DRR UTIL PP-3