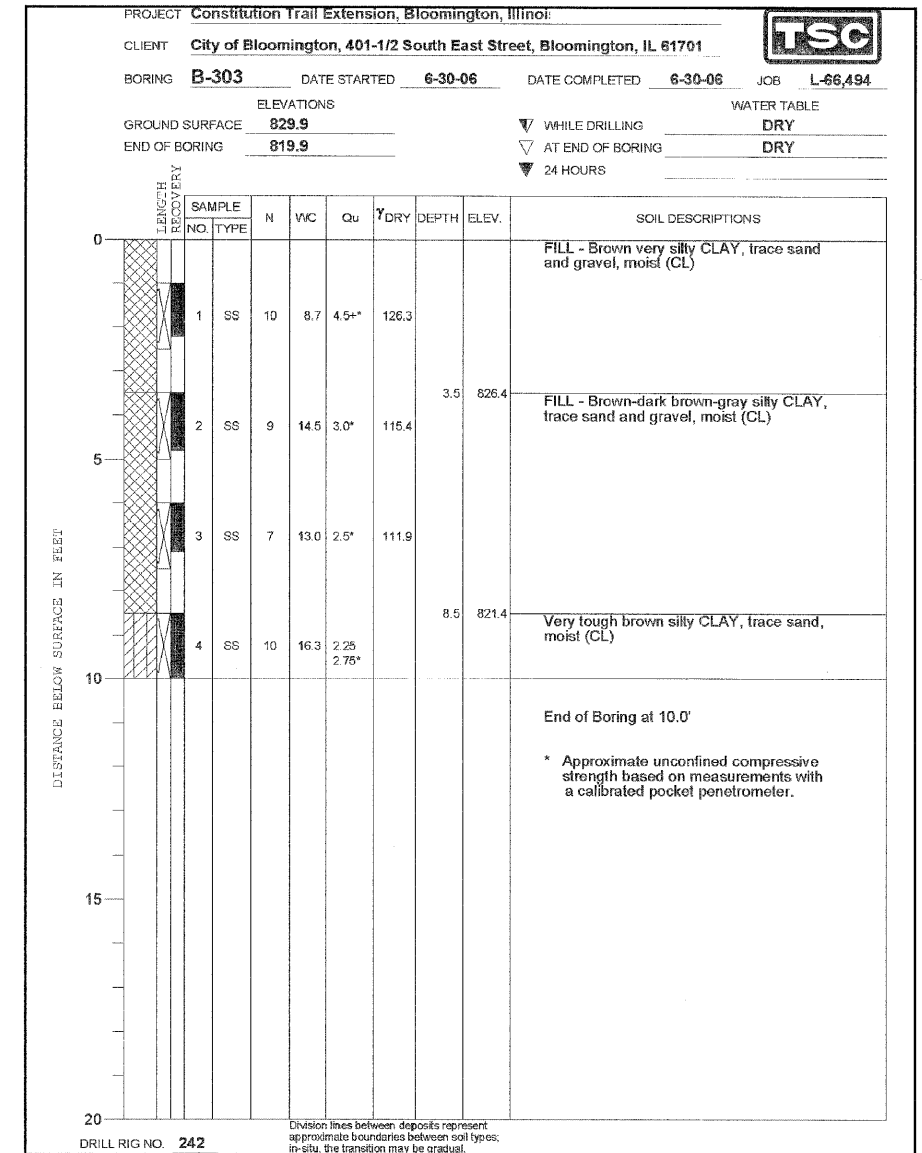
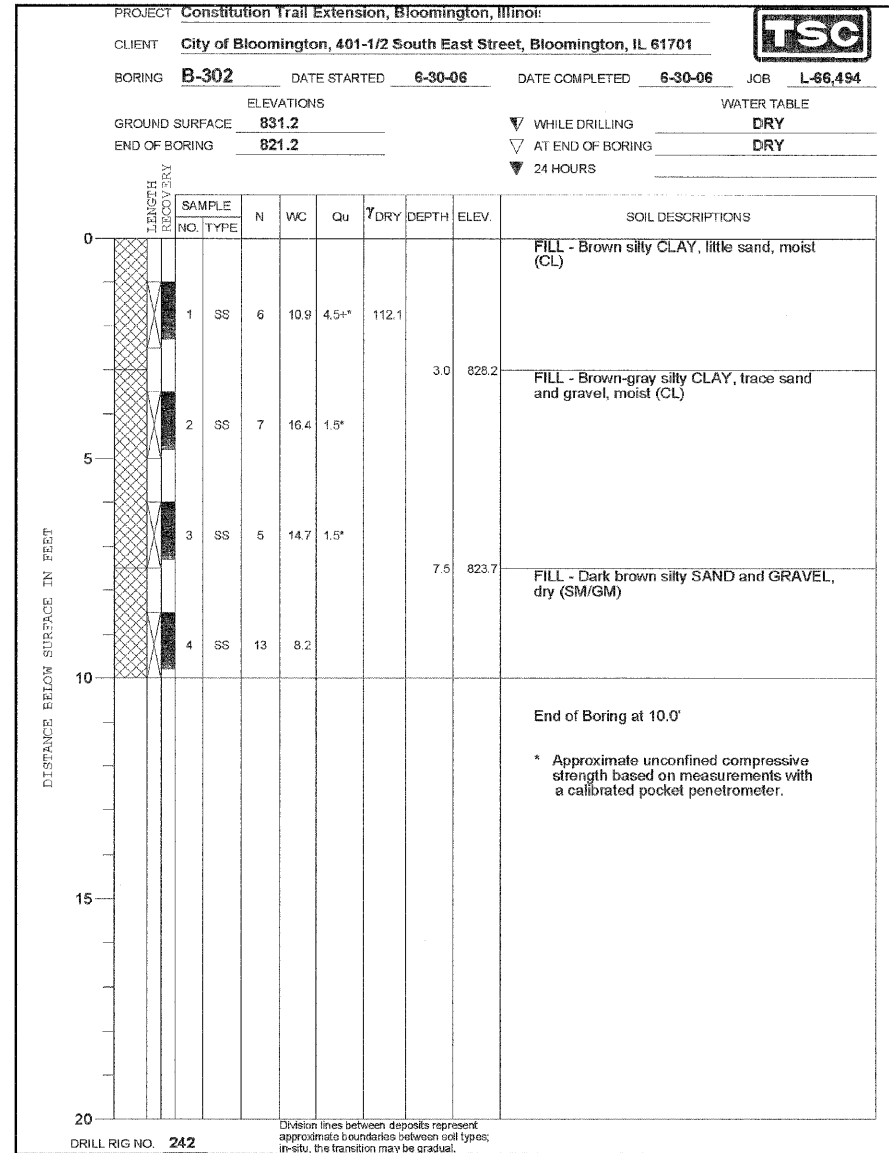
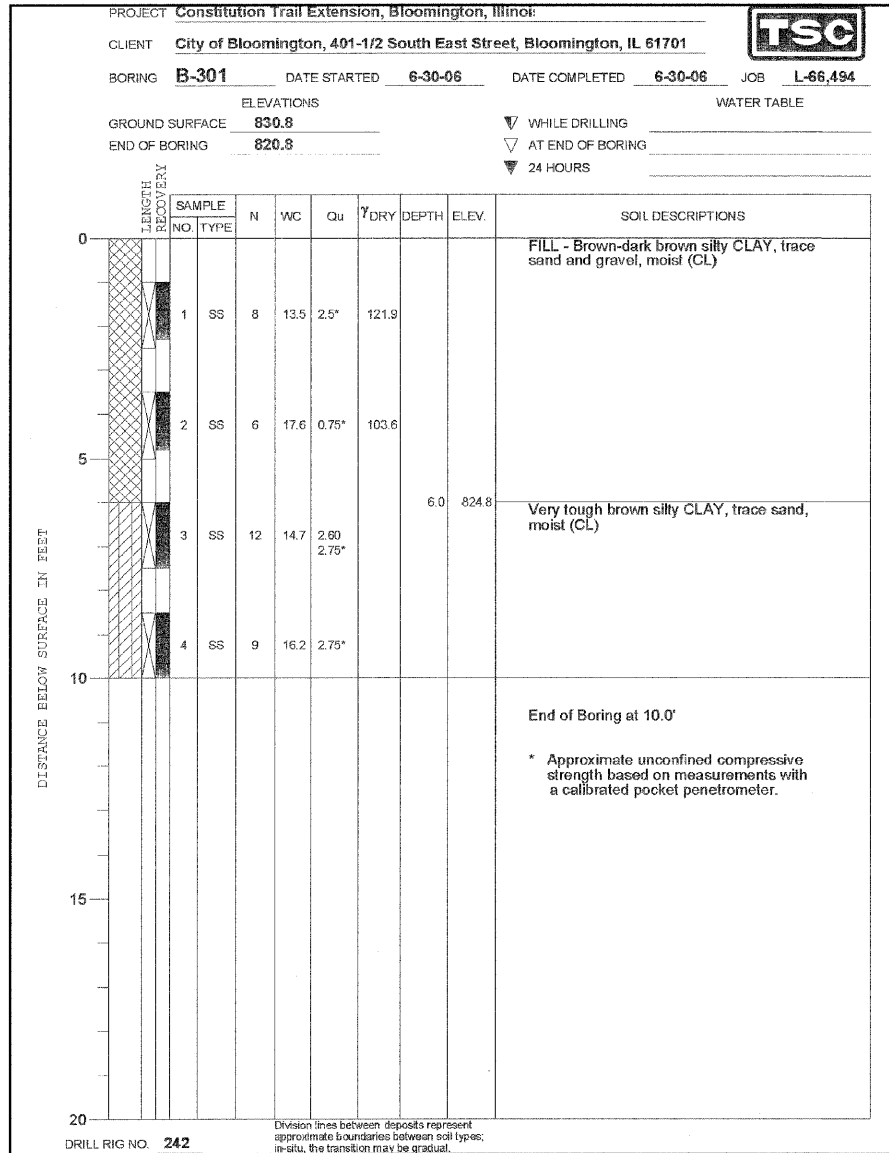


F.A. RTE.	SECTION	COUNTY	TOTAL SHEETS	SHEET NO.
	05-00333-00-BT	McLEAN	56	22
STA.		TO STA.		
FED. ROAD DIST. NO.		ILLINOIS FED. AID PROJECT		

SW3 of SW4



CITY OF BLOOMINGTON, ILLINOIS
SECTION 05-00333-00-BT

RETAINING WALL BORING LOGS

DRAWN BY DJM/JTC		FILE NO. 24-8173
DATE 01/30/09		BOOK NO. 2752
CHECKED BY MSW	2708 McGraw Drive Bloomington, Illinois 61704 309/893-8436, 309/893-1871 fax	SHEET NO. 22 OF 56