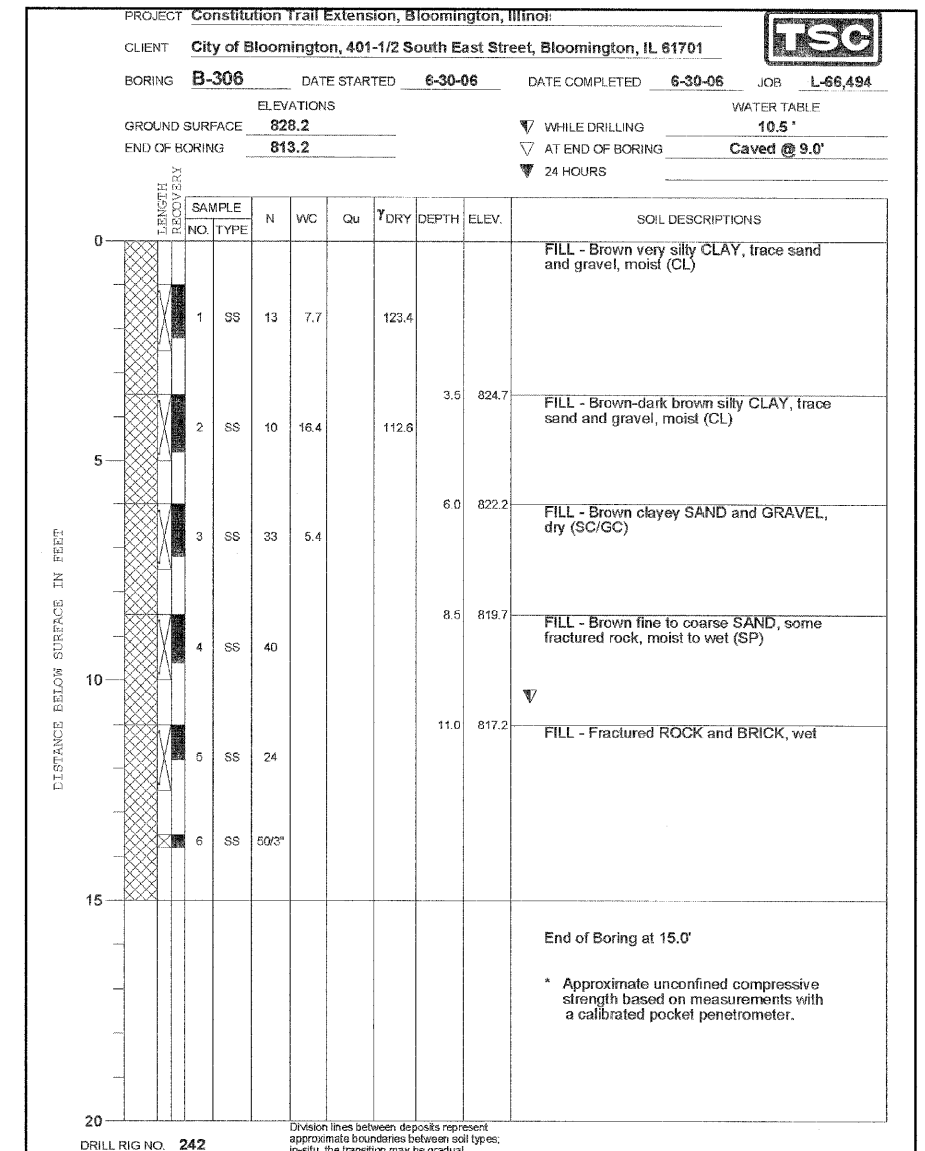
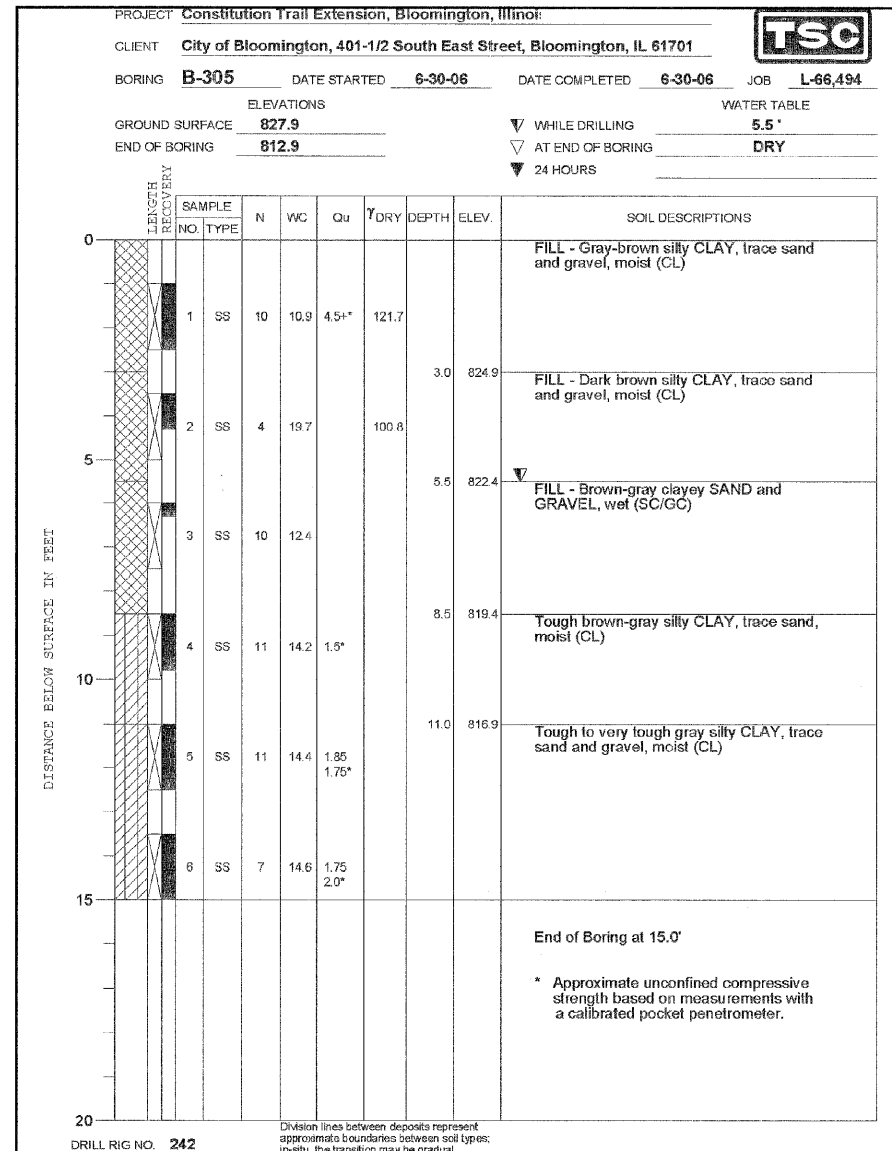
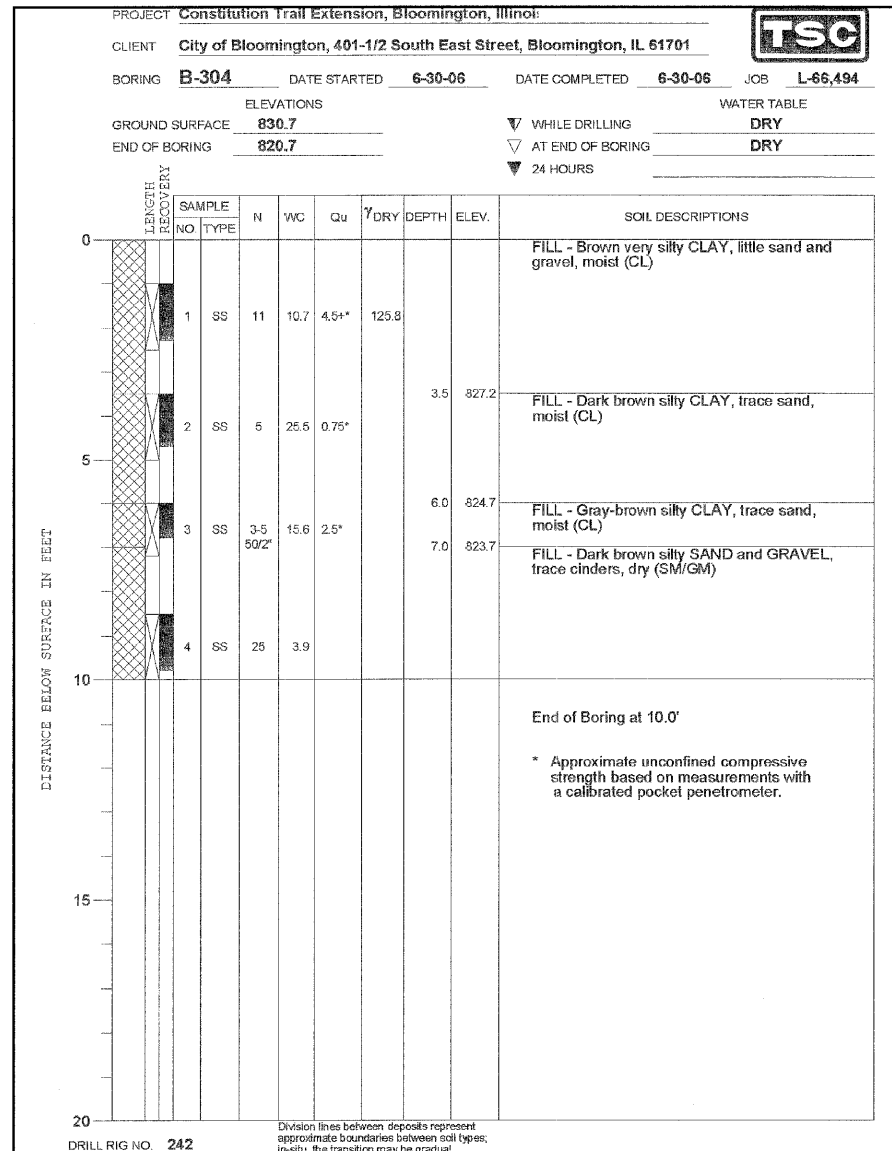


F.A. RTE.	SECTION	COUNTY	TOTAL SHEETS	SHEET NO.
	05-00333-00-BT	McLEAN	56	23
STA.		TO STA.		
FED. ROAD DIST. NO.	ILLINOIS FED. AID PROJECT			

SW4 of SW4



CITY OF BLOOMINGTON, ILLINOIS  
SECTION 05-00333-00-BT

RETAINING WALL BORING LOGS

DRAWN BY DJM/JTC	 8709 MacDrew Drive Bloomington, Illinois 61704 309/893-8435, 309/893-1571 fax	FILE NO. 24-8173
CHECKED BY MSW		BOOK NO. 2752
DATE 01/30/09		SHEET NO. 23 OF 56

City of Bloomington/COB/050932.00-Bloomington\_rfl\_05-00333-00-BT\_Constitution\_Trail/23-SW4