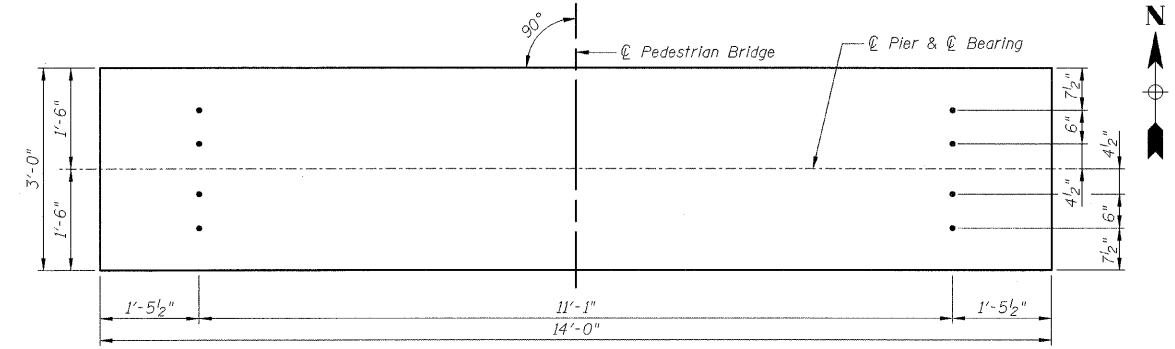


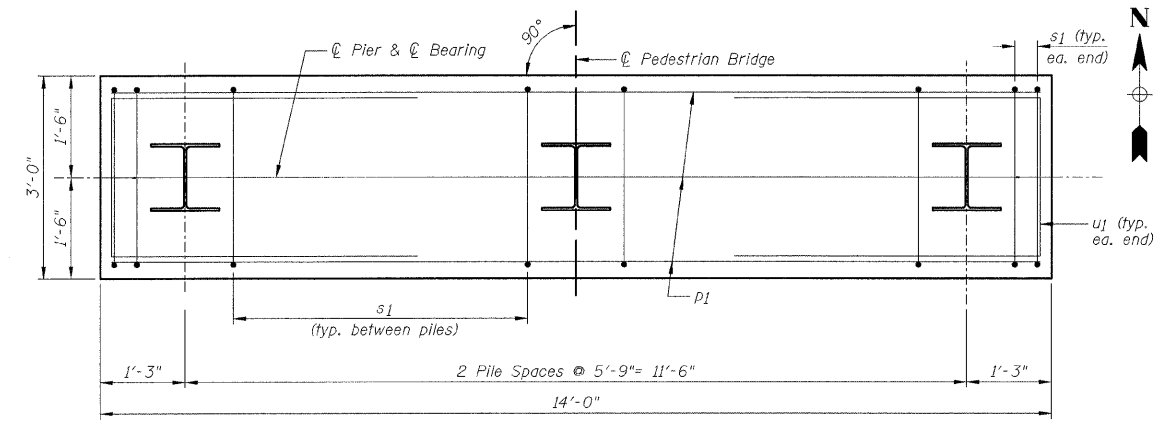
F.A. RTE.	SECTION	COUNTY	TOTAL SHEETS	SHEET NO.
	05-00333-00-BT	McLEAN	56	27
STA.	TO STA.			
FED. ROAD DIST. NO.	ILLINOIS	FED. AID PROJECT		

BILL OF MATERIALS - PIERS
(Quantities for 2 Piers)

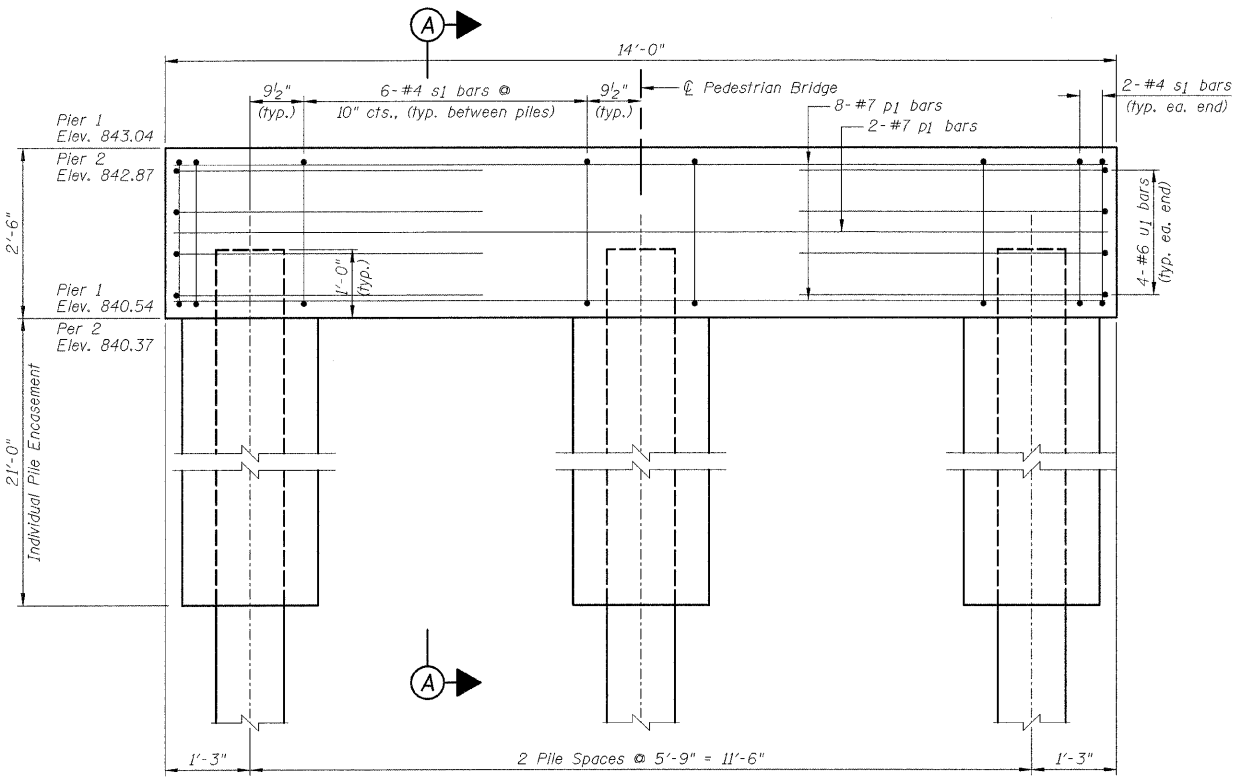
Bar	No.	Size	Length	Shape
p1	20	#7	13'-8"	—
s1	32	#4	10'-5"	□
u1	16	#6	11'-7"	□
Item	Unit	Quantity		
Concrete Structures	Cu. Yd.	7.8		
Concrete Encasement	Cu. Yd.	14.6		
Reinforcement Bars, Epoxy Coated	Pound	1060		
Furnishing Steel Piles HP 10x42	Foot	414		
Driving Piles	Foot	414		
Anchor Bolts, 1"	Each	16		
Concrete Sealer	Sq. Ft.	84		
Clear Protective Coating For Concrete	Sq. Ft.	415		



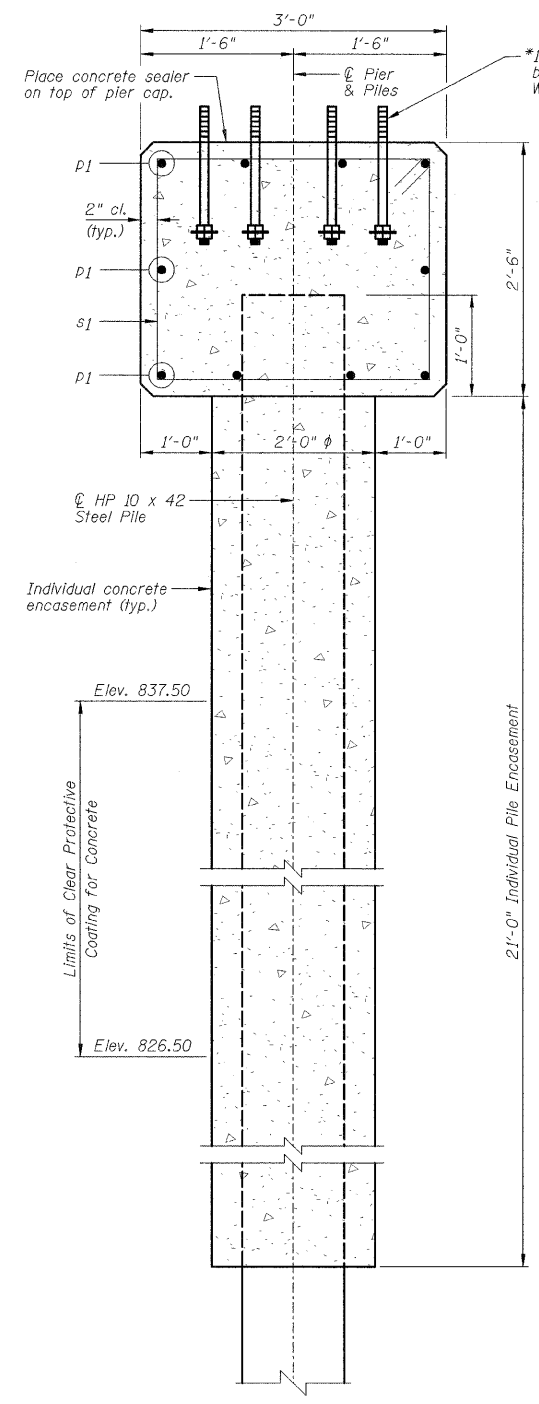
PLAN - ANCHOR BOLT LOCATION



PLAN - PILE CAP

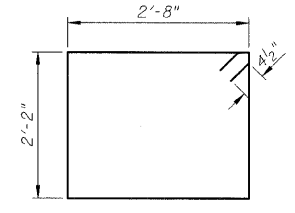


ELEVATION

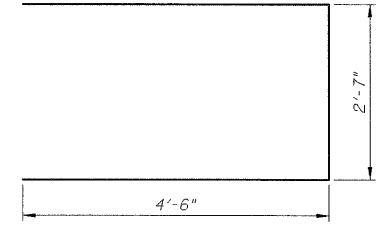


SECTION A-A

*Anchor bolts may be cast in place or installed in holes drilled before or after members are in place. Drilled and set anchor bolts shall be installed according to Article 521.06 of the Standard Specifications. Bottom nut not needed if anchor bolts are drilled and set.



s1 BAR



u1 BAR

PILE DATA
(2 Piers)

Type:	HP 10 x 42
No. Req'd.:	6
Est. Length:	69 Feet
Nom. Req. Brg.:	303 kips
Allowable Res. Avail.:	101 kips

NOTES:

- 1.) Space reinforcement in cap to miss anchor bolts.
- 2.) For pile details, see Sheet B5.
- 3.) Verify anchor bolt spacing, size and locations with bridge manufacturer before construction.
- 4.) Piles shall be driven through 18" diameter precored holes extending to elevation 812.00 according to Article 512.09(c) of the Standard Specifications. Cost included in driving piles.

CITY OF BLOOMINGTON, ILLINOIS
SECTION 05-00333-00-BT

PIERS

DRAWN BY DJM/JTC		FILE NO. 24-8173
DATE 01/30/09		BOOK NO. 2752
CHECKED BY MSW		SHEET NO. 27 OF 56

City of Bloomington 2008 0082932.00 - Supplemental #1 05-00333-00-BT - Construction Table/26/4/09