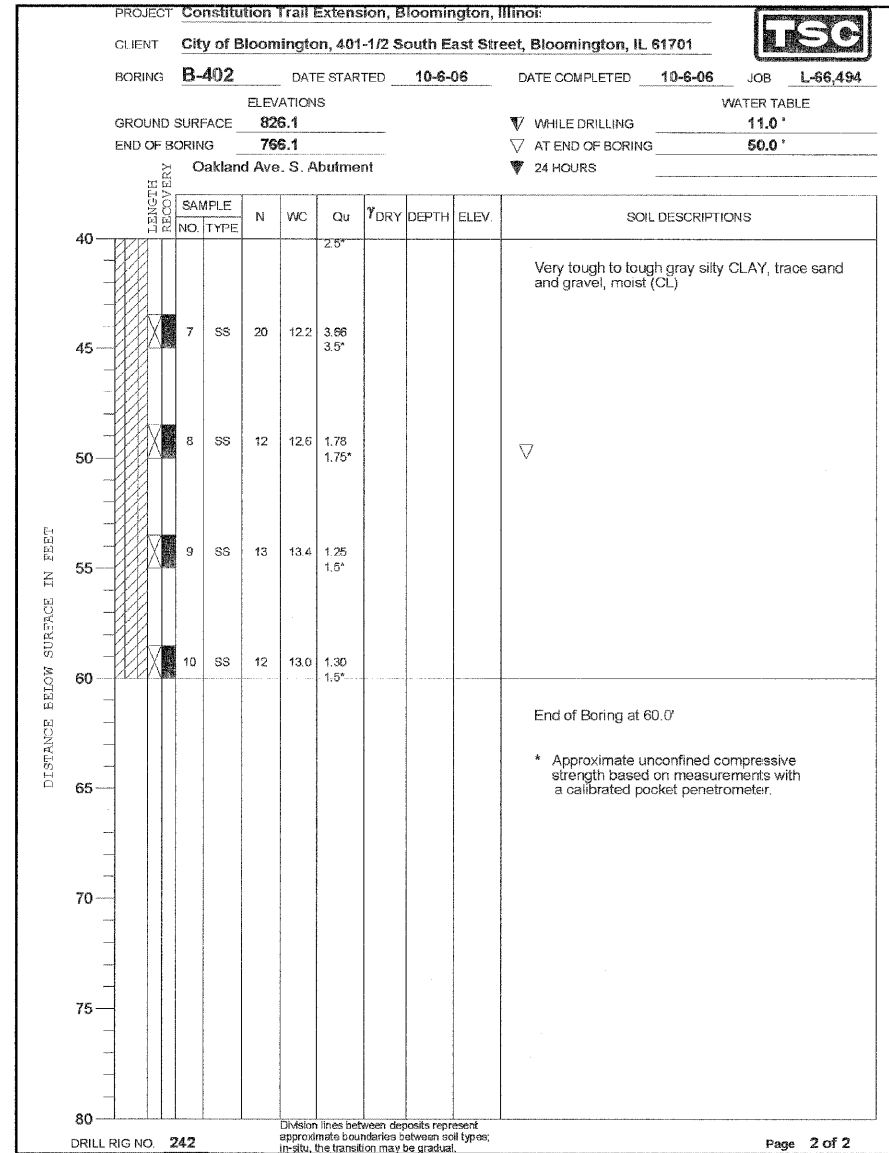
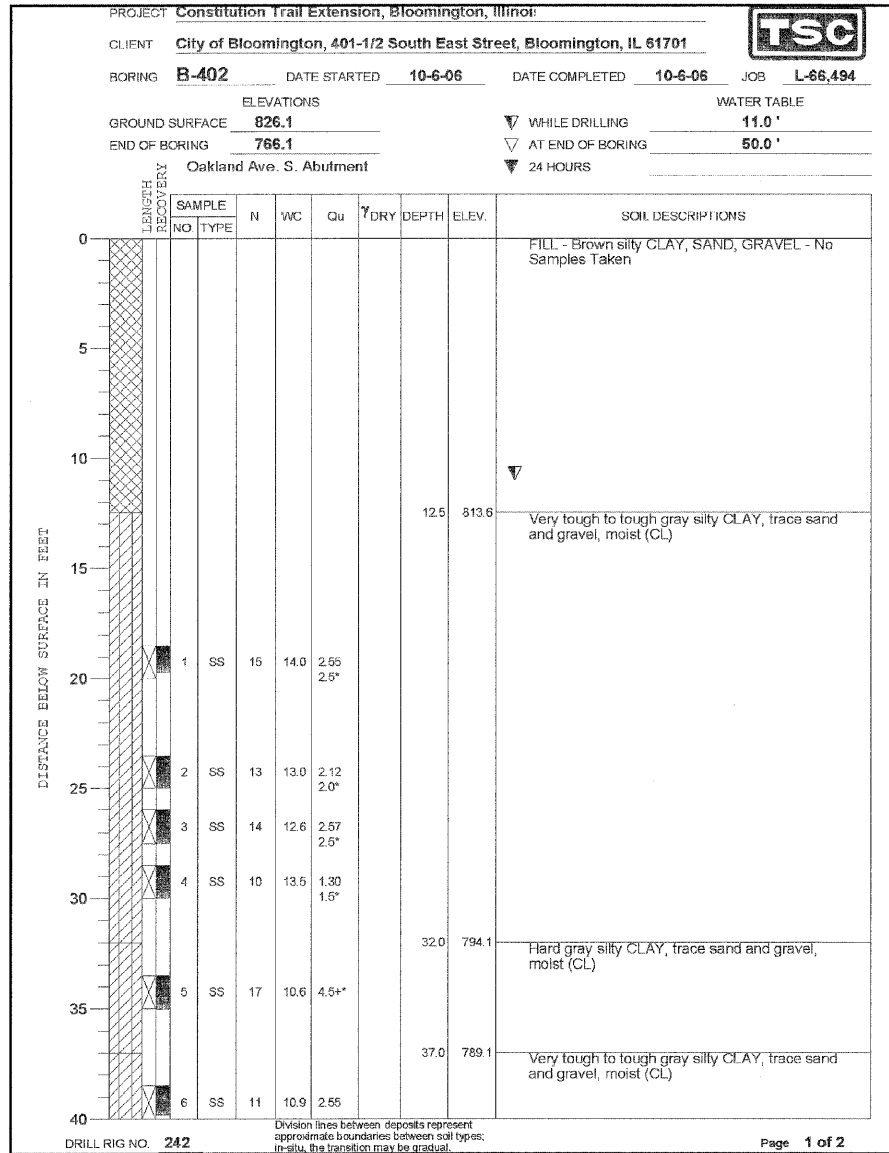


F.A. RTE.	SECTION	COUNTY	TOTAL SHEETS	SHEET NO.
	05-00333-00-BT	McLEAN	56	30
STA.		TO STA.		
FED. ROAD DIST. NO.		ILLINOIS FED. AID PROJECT		



City of Bloomington, 401-1/2 South East Street, Bloomington, IL 61701

CITY OF BLOOMINGTON, ILLINOIS
SECTION 05-00333-00-BT

BRIDGE BORING LOGS

DRAWN BY DJM/JTC		FILE NO. 24-8173
DATE 01/30/09		BOOK NO. 2752
CHECKED BY MSW	3709 Northway Drive Bloomington, Illinois 61704 309/868-8636, 309/868-1571 fax	SHEET NO. 30 of 56