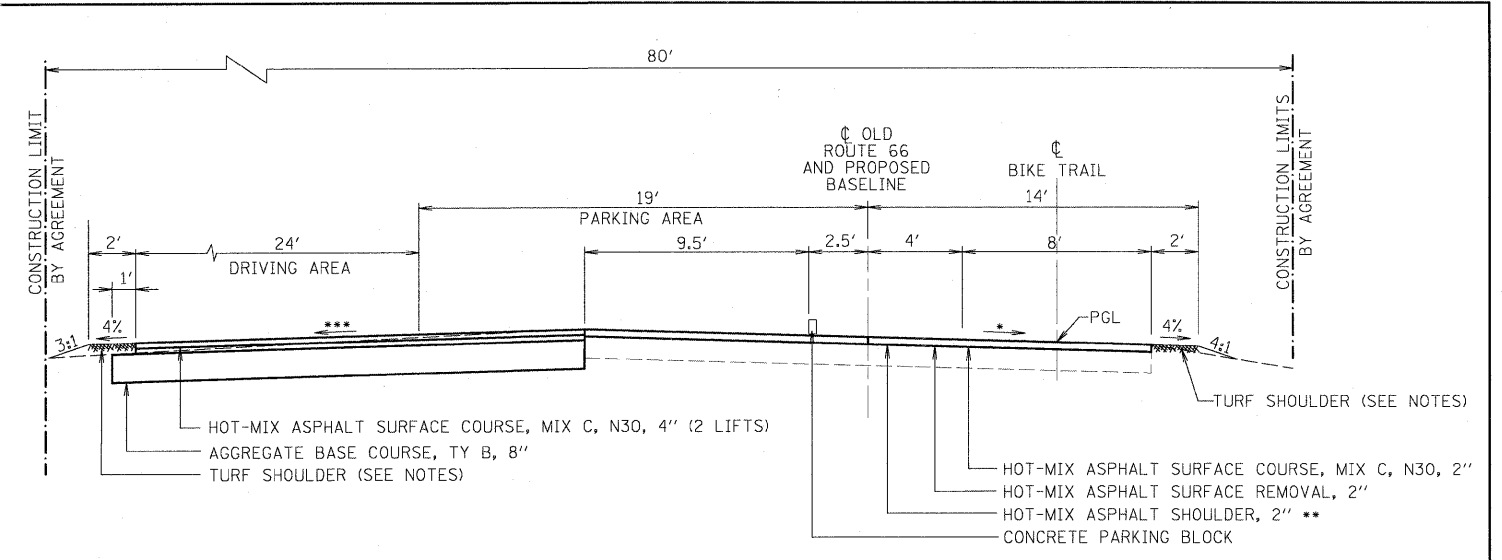


EXISTING TYPICAL SECTION

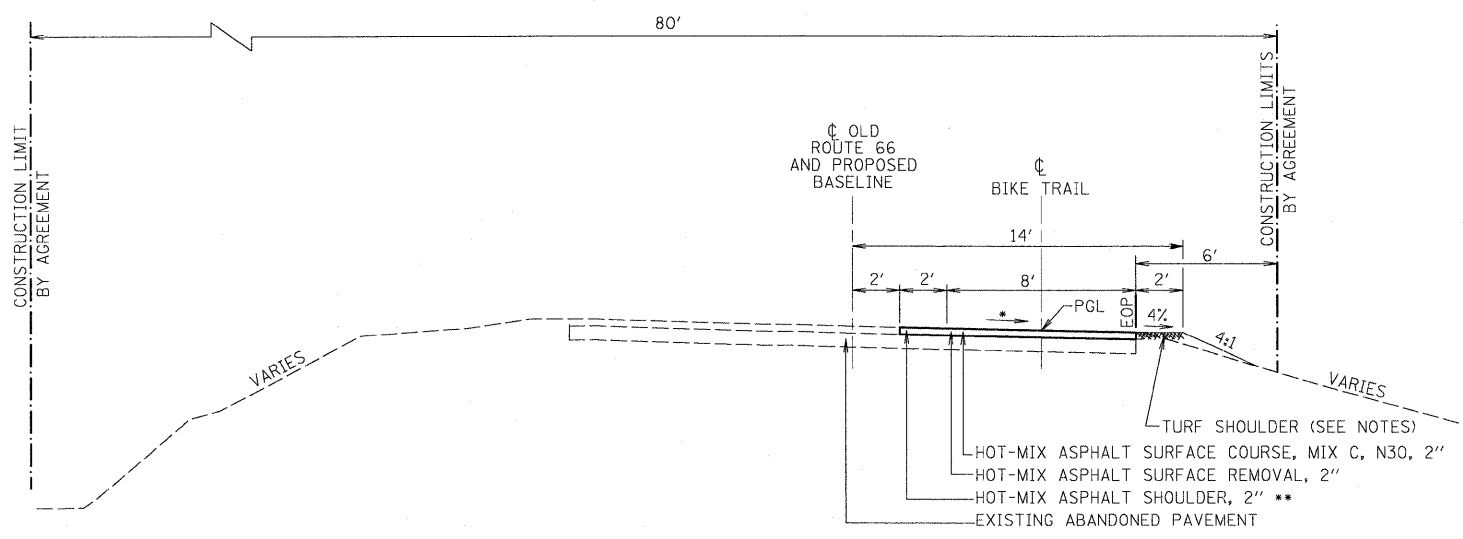
STA. 11+34.35 TO STA. 37+53.92
 STA. 38+04.45 TO STA. 38+53.58
 STA. 39+04.07 TO STA. 64+07.02



PROPOSED BIKE TRAIL TYPICAL SECTION AT TRAILHEAD

STA. 11+34.35 TO STA. 12+15.15

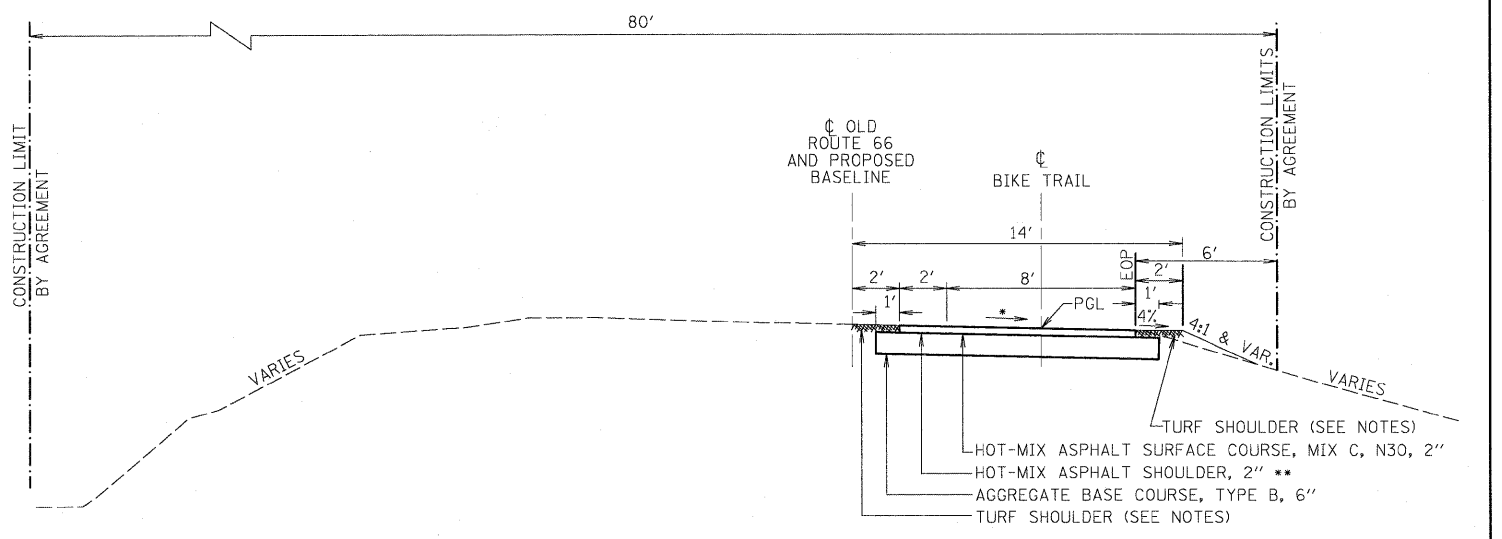
- MATCH EXISTING PAVEMENT SLOPE
- THE CONTRACTOR SHALL PLACE THE HOT-MIX ASPHALT SHOULDERS AND THE HOT-MIX ASPHALT SURFACE COURSE FOR MAINLINE OF BIKE TRAIL SIMULTANEOUSLY. MATERIAL USED FOR HOT-MIX ASPHALT SURFACE COURSE SHALL BE THE SAME MATERIAL USED FOR HOT-MIX ASPHALT SHOULDERS. ALL WORK REQUIRED TO PLACE HOT-MIX ASPHALT SHOULDERS SHALL BE MEASURED AND PAID FOR AT THE CONTRACT UNIT PRICE BID PER TON FOR HOT-MIX ASPHALT SURFACE COURSE, MIX "C", N30.
- SLOPE TO DRAIN (CROSS SLOPE NOT TO EXCEED 2%)



PROPOSED BIKE TRAIL TYPICAL SECTION AT EXISTING PAVEMENT

STA. 12+15.15 TO STA. 37+53.92
 STA. 38+04.45 TO STA. 38+53.58
 STA. 39+04.07 TO STA. 64+07.02

- SECTIONS OF THE EXISTING ABANDONED PAVEMENT WERE BUILT WITH HORIZONTAL CURVES WITH SUPERELEVATION. CONTRACTOR SHALL MATCH EXISTING CROSS SLOPES OF THE EXISTING PAVEMENT. CONTRACTOR SHALL EXAMINE EXISTING CROSS SLOPES PRIOR TO HOT-MIX ASPHALT SURFACE REMOVAL. CONTRACTOR SHALL REMOVE SURFACE AT NO GREATER THAN 2% CROSS SLOPE. CONTRACTOR SHALL PLACE HOT-MIX ASPHALT SURFACE COURSE AT NO GREATER THAN 2% AND IN A MANNER THAT ALLOWS POSITIVE DRAINAGE.
- THE CONTRACTOR SHALL PLACE THE HOT-MIX ASPHALT SHOULDERS AND THE HOT-MIX ASPHALT SURFACE COURSE FOR MAINLINE OF BIKE TRAIL SIMULTANEOUSLY. MATERIAL USED FOR HOT-MIX ASPHALT SURFACE COURSE SHALL BE THE SAME MATERIAL USED FOR HOT-MIX ASPHALT SHOULDERS. ALL WORK REQUIRED TO PLACE HOT-MIX ASPHALT SHOULDERS SHALL BE MEASURED AND PAID FOR AT THE CONTRACT UNIT PRICE BID PER TON FOR HOT-MIX ASPHALT SURFACE COURSE, MIX "C", N30.



PROPOSED BIKE TRAIL TYPICAL SECTION AT SIDE ROADS

STA. 10+47.22 TO STA. 11+34.35
 STA. 37+53.92 TO STA. 38+04.45
 STA. 38+53.58 TO STA. 39+04.07
 STA. 64+07.02 TO STA. 64+61.67
 STA. 65+70.42 TO STA. 69+18.18
 STA. 69+72.63 TO STA. 69+95.56

- CONTINUE SLOPE FROM OVERLAY SECTION NOT TO EXCEED 2%
- THE CONTRACTOR SHALL PLACE THE HOT-MIX ASPHALT SHOULDERS AND THE HOT-MIX ASPHALT SURFACE COURSE FOR MAINLINE OF BIKE TRAIL SIMULTANEOUSLY. MATERIAL USED FOR HOT-MIX ASPHALT SURFACE COURSE SHALL BE THE SAME MATERIAL USED FOR HOT-MIX ASPHALT SHOULDERS. ALL WORK REQUIRED TO PLACE HOT-MIX ASPHALT SHOULDERS SHALL BE MEASURED AND PAID FOR AT THE CONTRACT UNIT PRICE BID PER TON FOR HOT-MIX ASPHALT SURFACE COURSE, MIX "C", N30.

PGL = PROFILE GRADE LINE

NOTES:

1. SEE PLANS FOR LOCATIONS WHERE HOT-MIX ASPHALT SHOULDER IS TO BE PLACED IN LIEU OF TURF SHOULDER.
2. EXISTING TURF/AGGREGATE SHOULDERS SHALL REMAIN IN PLACE AND UNDISTURBED UNLESS DEEMED UNACCEPTABLE BY THE ENGINEER. UNACCEPTABLE TURF/AGGREGATE SHOULDERS SHALL BE REPAIRED BY THE CONTRACTOR AS REQUESTED BY THE ENGINEER.
3. TURF SHOULDERS SHALL NOT BE PAID FOR SEPARATELY BUT SHALL BE INCLUDED IN THE COST OF TOPSOIL EXCAVATION AND PLACEMENT AND SEEDING, CLASS 2 (SPECIAL). SEE SPECIAL PROVISIONS
4. CONSTRUCTION LIMITS BY AGREEMENT AS SHOWN ABOVE ARE DEFINED AS BEING APPROXIMATELY 80' IN WIDTH FROM A POINT ON THE INSIDE SHOULDER 6' FROM THE EAST EDGE OF PAVEMENT OF THE ABANDONED SOUTHBOUND LANE AND EXTENDING OUTWARD WESTERLY TO THE WEST ROW LINE.
5. AREA REFLECTIVE CRACK CONTROL TREATMENT SYSTEM A SHALL BE PLACED ON MILLED SURFACE.

FILE NAME =	USER NAME = #USER#	DESIGNED - DWR	REVISED -	STATE OF ILLINOIS DEPARTMENT OF TRANSPORTATION	TYPICAL CROSS SECTIONS		F.A. RTE.	SECTION	COUNTY	TOTAL SHEETS	SHEET NO.
#FILEL#		DRAWN - AJD/JTC	REVISED -		SHEET NO. OF SHEETS	STA. 10+47.22 TO STA. 69+95.56	06-00025-01-BT	McLEAN	36	3	
PLOT SCALE = #SCALE#		CHECKED - ERB	REVISED -		CONTRACT NO. 91410						
PLOT DATE = #DATE#		DATE - 03/27/09	REVISED -		FED. ROAD DIST. NO. ILLINOIS FED. AID PROJECT						