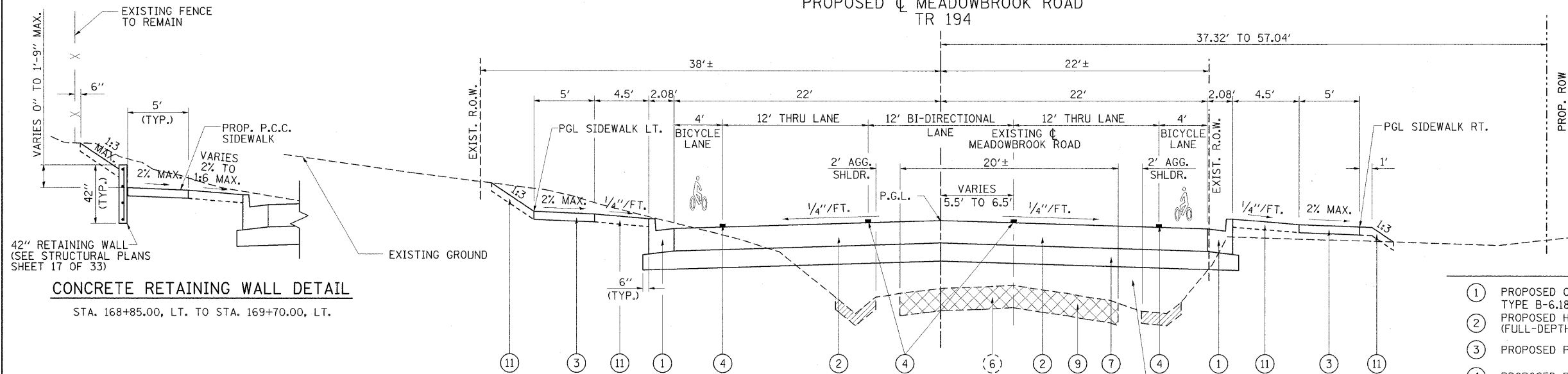


PROPOSED ϕ MEADOWBROOK ROAD
TR 194



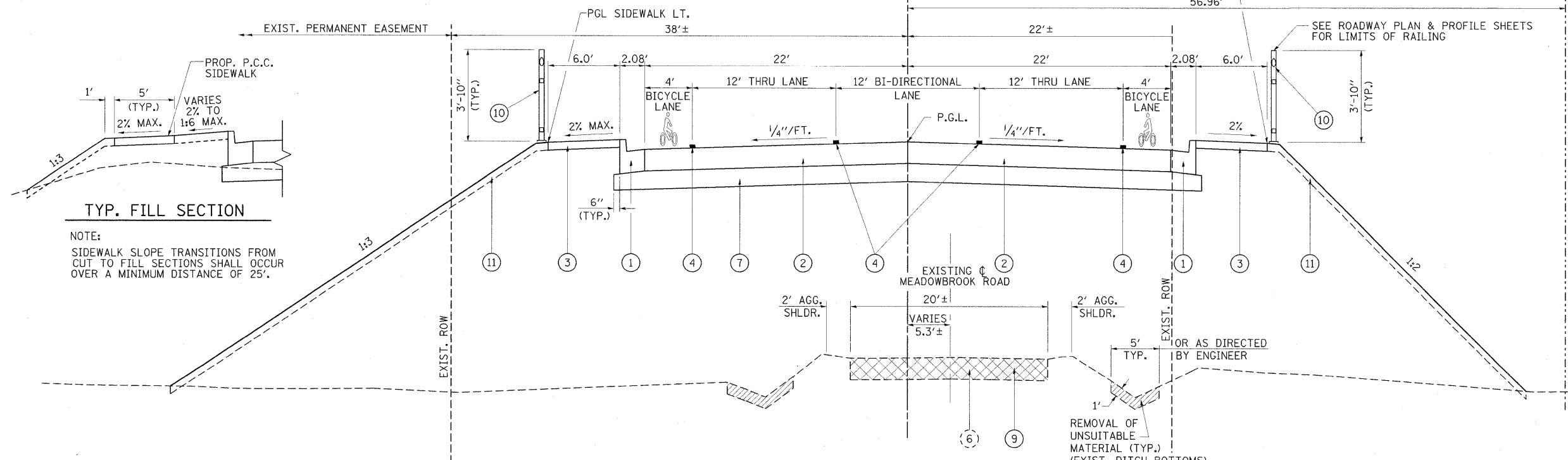
PROPOSED TYPICAL SECTION
MEADOWBROOK ROAD

STA. 166+10.00 TO STA. 172+00±

LEGEND

- ① PROPOSED COMBINATION CONCRETE CURB AND GUTTER, TYPE B-6.18
- ② PROPOSED HOT-MIX ASPHALT PAVEMENT (FULL-DEPTH), 8 1/2"
- ③ PROPOSED P.C.C. SIDEWALK 4"
- ④ PROPOSED PAVEMENT MARKING (SEE PAVEMENT MARKING SHEETS)
- ⑤ PROPOSED STRUCTURE CONCRETE WING WALL & FOUNDATION
- ⑥ EXISTING OIL & CHIP SURFACE PAVEMENT
- ⑦ PROPOSED SUB-BASE GRANULAR MATERIAL, TYPE B 12"
- ⑧ STONE RIP-RAP CLASS A4 WITH FILTER FABRIC
- ⑨ PAVEMENT REMOVAL IN ACCORDANCE WITH EARTH EXCAVATION SPECIAL PROVISION
- ⑩ PROPOSED PEDESTRIAN RAILING (SEE STRUCTURAL PLANS)
- ⑪ TOPSOIL, 4"; SEEDING CLASS 2; MULCH METHOD 2; $\leq 1:3$ SLOPES; EROSION CONTROL BLANKET; $> 1:3$ SLOPES

PROPOSED ϕ MEADOWBROOK ROAD
TR 194



PROPOSED TYPICAL SECTION
MEADOWBROOK ROAD

STA. 172+00± TO STA. 172+62.15
STA. 173+27.85 TO STA. 174+00.00

CONCRETE RETAINING WALL DETAIL

STA. 168+85.00, LT. TO STA. 169+70.00, LT.

TYP. CUT SECTION

TYP. FILL SECTION

NOTE:
SIDEWALK SLOPE TRANSITIONS FROM CUT TO FILL SECTIONS SHALL OCCUR OVER A MINIMUM DISTANCE OF 25'.

FILE NAME =
...draw\sheets\typical_01.dgn

USER NAME = Rob Heady
PLOT SCALE = 5,0000 ' / IN.
PLOT DATE = 10/9/2008

DESIGNED - JMM
DRAWN - RAH
CHECKED - JMM
DATE - 10/2008

REVISED -
REVISED -
REVISED -
REVISED -

MEADOWBROOK ROAD
CITY OF SPRINGFIELD
SPRINGFIELD, ILLINOIS

TYPICAL SECTIONS

SCALE: N/A SHEET NO. 4 OF 33 SHEETS STA. N/A TO STA. N/A