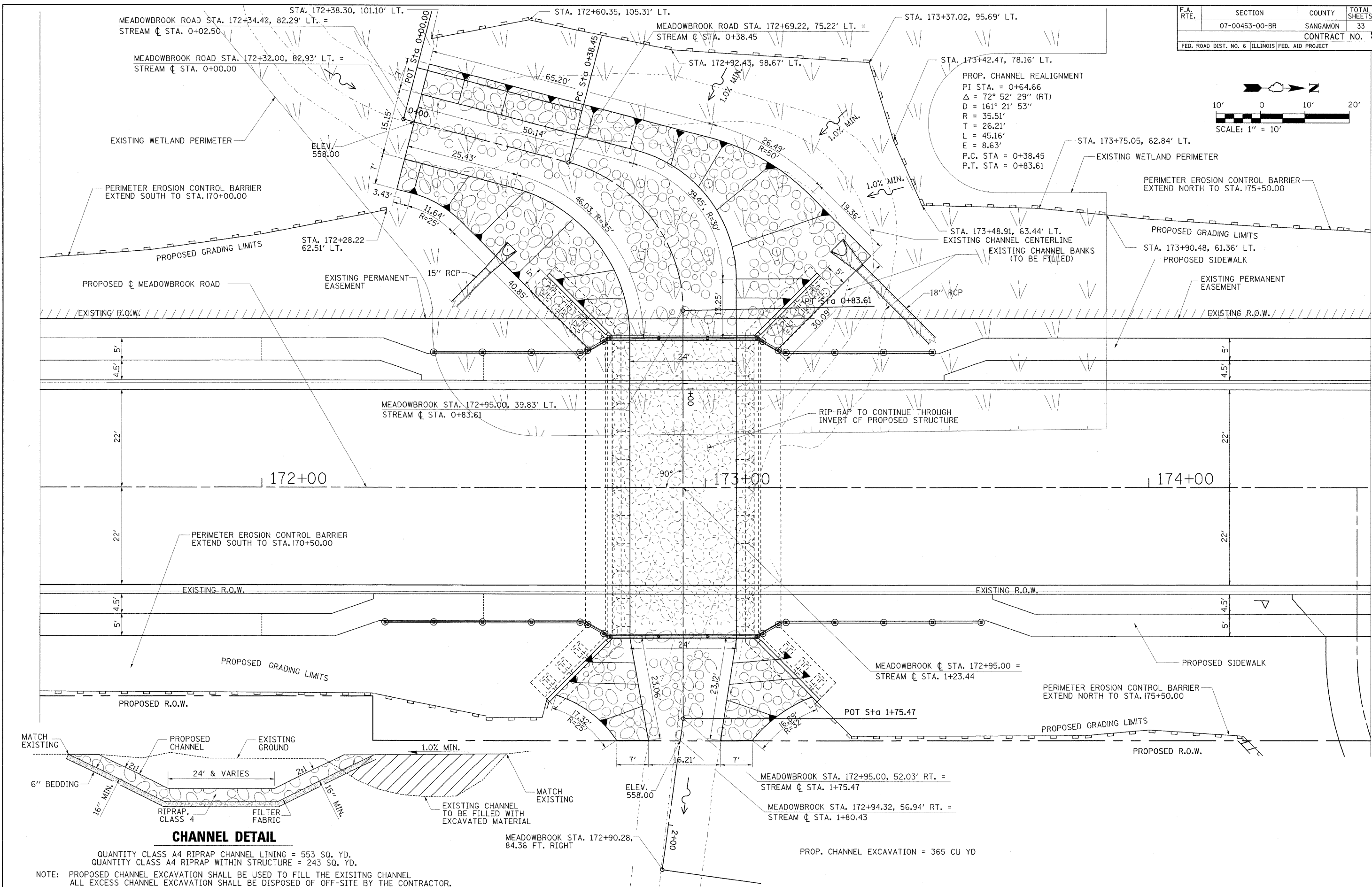


PROP. CHANNEL REALIGNMENT
 PI STA. = 0+64.66
 $\Delta = 72^\circ 52' 29''$ (RT)
 $D = 161' 21' 53''$
 $R = 35.51'$
 $T = 26.21'$
 $L = 45.16'$
 $E = 8.63'$
 P.C. STA = 0+38.45
 P.T. STA = 0+83.61



CHANNEL DETAIL

QUANTITY CLASS A4 RIPRAP CHANNEL LINING = 553 SQ. YD.
 QUANTITY CLASS A4 RIPRAP WITHIN STRUCTURE = 243 SQ. YD.

NOTE: PROPOSED CHANNEL EXCAVATION SHALL BE USED TO FILL THE EXISTING CHANNEL
 ALL EXCESS CHANNEL EXCAVATION SHALL BE DISPOSED OF OFF-SITE BY THE CONTRACTOR.

FILE NAME = ...sheets\channel realignment.dgn	USER NAME = Rob Heady	DESIGNED - EDS / JMM	REVISED -
		DRAWN - GLD	REVISED -
		CHECKED - JMM	REVISED -
		DATE - 08/2008	REVISED -

**MEADOWBROOK ROAD
 CITY OF SPRINGFIELD
 SPRINGFIELD, ILLINOIS**

CHANNEL REALIGNMENT PLAN

SCALE: 1" = 10' SHEET NO. 12 OF 33 SHEETS STA. N/A TO STA. N/A