

STATE OF ILLINOIS
DEPARTMENT OF TRANSPORTATION
DIVISION OF HIGHWAYS

PLANS FOR PROPOSED
SURFACE TRANSPORTATION /RURAL PROGRAM

TR 199A, TR 92, FAS 566(CH 10)

SECTION 05-00113-00-WR

LOGAN COUNTY

PROJECT RS-0566 (106)

JOB NUMBER C-96-224-09

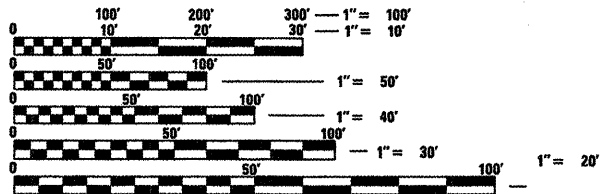
F.A.S. RTE.	SECTION	COUNTY	TOTAL SHEETS	SHEET NO.
566	05-00113-00-WR	LOGAN	63	1
FED. ROAD DIST. NO.		ILLINOIS		

INDEX OF SHEETS

SHEET NO	TITLE
1	COVER SHEET
2	HIGHWAY STANDARDS, SUMMARY OF QUANTITIES, GENERAL NOTES
3	KEY MAP
4-6	TYPICAL CROSS SECTIONS
7-9	BUTT JOINT DETAILS
10-13	SCHEDULE OF QUANTITIES
14-15	CROSS TIES
16-19	ALIGNMENT
20-23	PLAN & PROFILES - 800TH AVE
24-28	PLAN & PROFILES - CH 10
29-32	EROSION CONTROL
33-36	INTERSECTION DETAILS
37	PAVEMENT PATCHING DETAIL
37	CONTRACTION JOINT DETAIL
38	ENTRANCE DETAILS
39	MAILBOX TURNOUT
40	SIDE ROAD DETAILS
41-45	GUARDRAIL LAYOUT & SHOULDER WIDENING DETAILS
46-51	CROSS SECTIONS - 800TH AVE
52-63	CROSS SECTIONS - CH 10

UTILITY CONTACTS:

UTILITY TYPE: OVERHEAD ELECTRIC MENARD ELECTRIC. (217) 632-7746 ATTN: JAMES RECHNER	UTILITY TYPE: CABLE INSIGHT COMMUNICATIONS (217) 424-4232 ATTN: ROBERT DAVIS
UTILITY TYPE: TELEPHONE FRONTIER COMMUNICATIONS (402) 250-1095 ATTN: BILL DANIEL	UTILITY TYPE: TELEPHONE VERIZON NORTH (309) 827-1617 ATTN: MARY RUTH WILLIS
UTILITY TYPE: AMEREN CILCO (309) 693-4839 ATTN: KENT KOWALSKA	UTILITY TYPE: CITY OF MT. PULASKI (217) 792-3956 ATTN: MICHAEL R. PATRIDGE

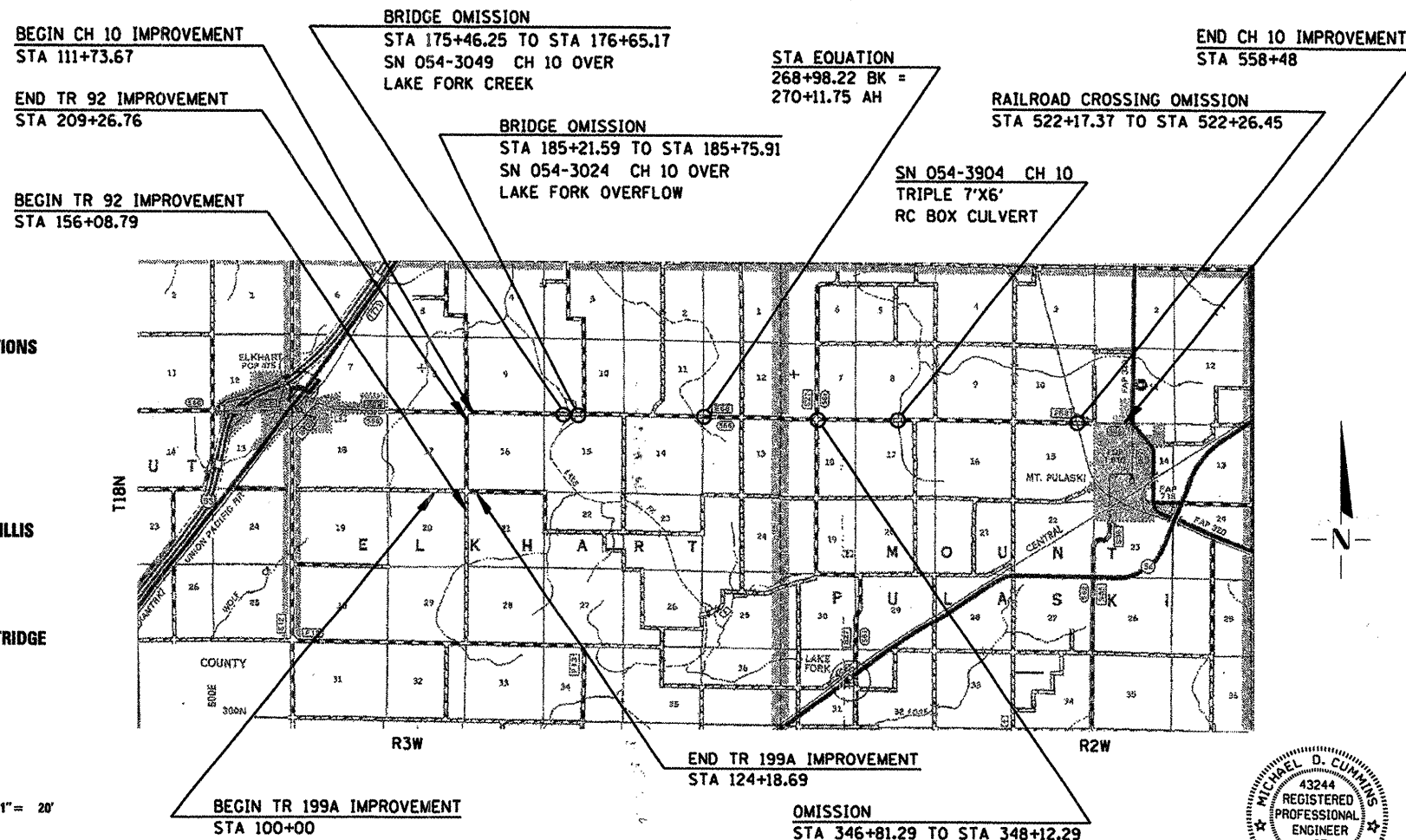


FULL SIZE PLANS HAVE BEEN PREPARED USING STANDARD ENGINEERING SCALES. REDUCED SIZED PLANS WILL NOT CONFORM TO STANDARD SCALES. IN MAKING MEASUREMENTS ON REDUCED PLANS, THE ABOVE SCALES MAY BE USED.

J.U.L.I.E.
JOINT UTILITY LOCATION INFORMATION FOR EXCAVATION
1-800-892-0123
OR 811

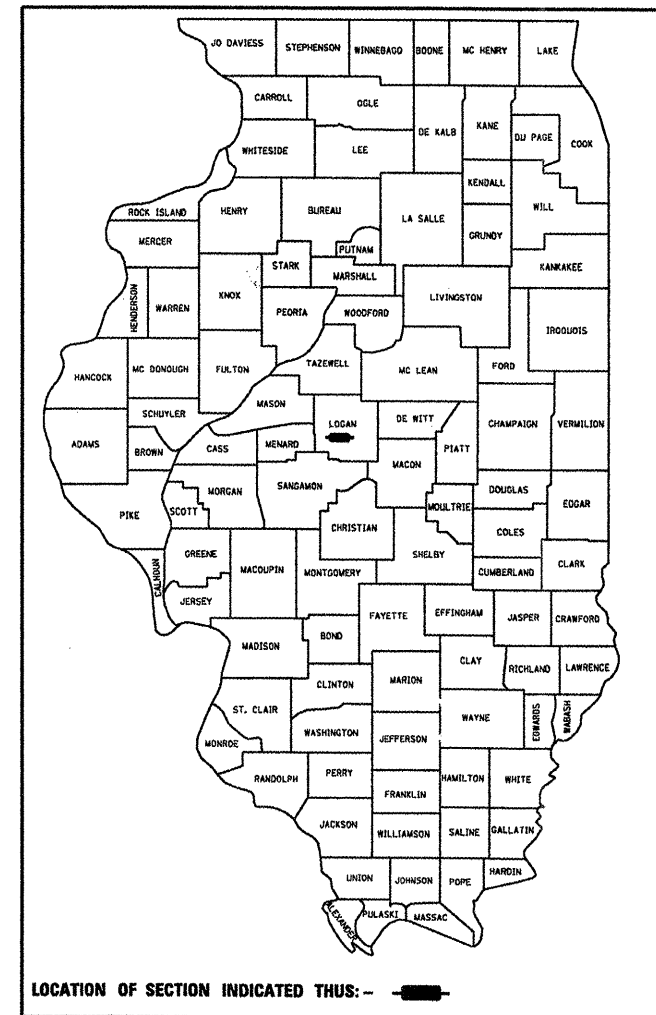
CONTRACT NO. **93482**

CUMMINS ENGINEERING CORPORATION SPRINGFIELD, ILLINOIS



GROSS LENGTH OF SECTION	52,297.46 FEET	9.905 MILES
NET LENGTH OF SECTION	51,960.14 FEET	9.841 MILES

ROAD	DESIGN SPEED	ADT
TR 199A (600th ST): MAJOR COLLECTOR	40 MPH	<400 (3R)
TR 92 (800th AVE): MAJOR COLLECTOR	50 MPH	400-750 (NEW CONST.)
CH 10 (700th ST): MAJOR COLLECTOR	50 MPH	1,000-3,000 (3R)



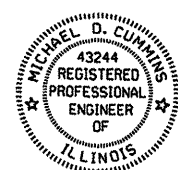
APPROVED JAN 20 2009
Robert A. Adge
 COUNTY ENGINEER

PASSED FEB 11 2009
Jim F...
 DISTRICT SIX ENGINEER OF LOCAL ROADS AND STREETS

PASSED February 5 2009
Don Chamberlain
 DISTRICT ENGINEER OF CONSTRUCTION

RELEASED FOR BID BASED ON LIMITED REVIEW FEB 11 2009
Roger & Durbell
 DEPUTY DIRECTOR OF HIGHWAYS,
 REGION FOUR ENGINEER

STATE OF ILLINOIS
DEPARTMENT OF TRANSPORTATION



Michael D. Cummins (1/24/2009)
 ILLINOIS PROFESSIONAL NO. 43244
 (Expires 11/30/09)