

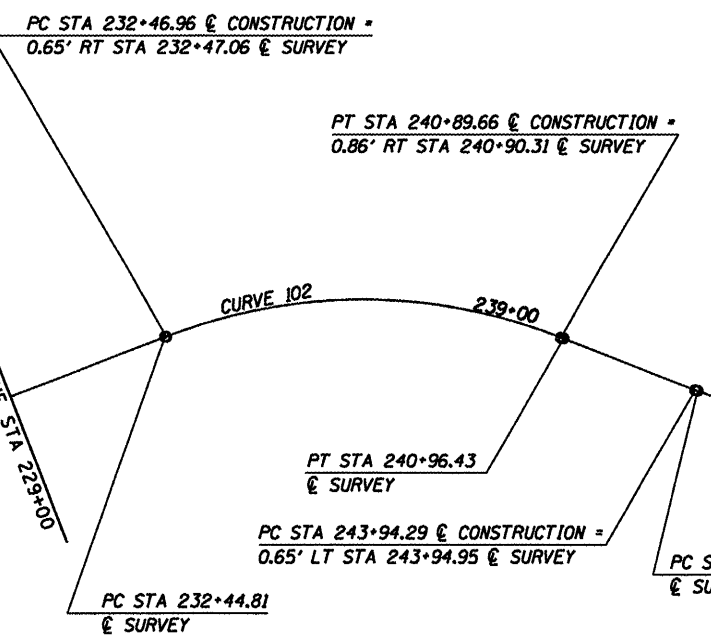


MATCH LINE STA 232+00

MATCH LINE STA 289+00

MATCH LINE STA 289+00

MATCH LINE STA 349+00



COORDINATE DATA: CENTERLINE CONSTRUCTION

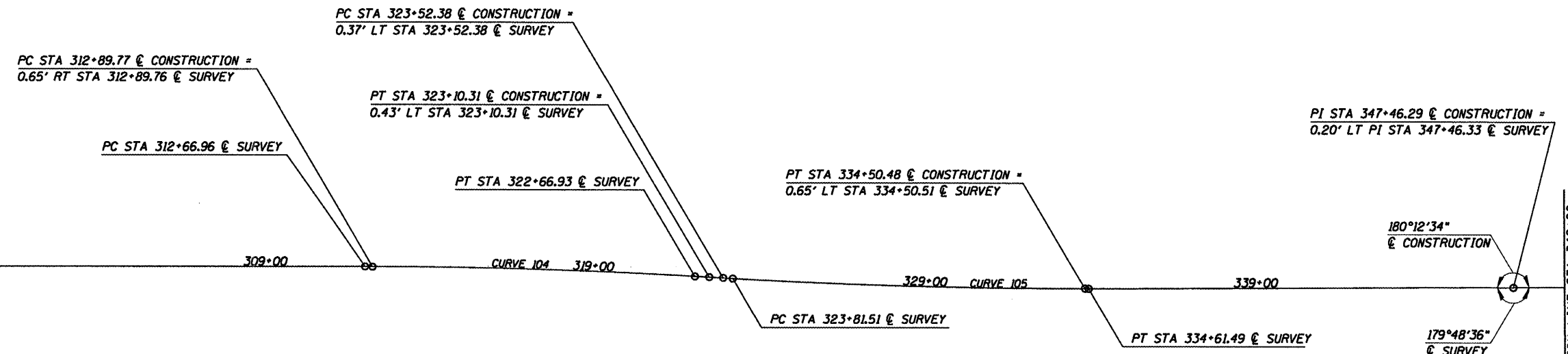
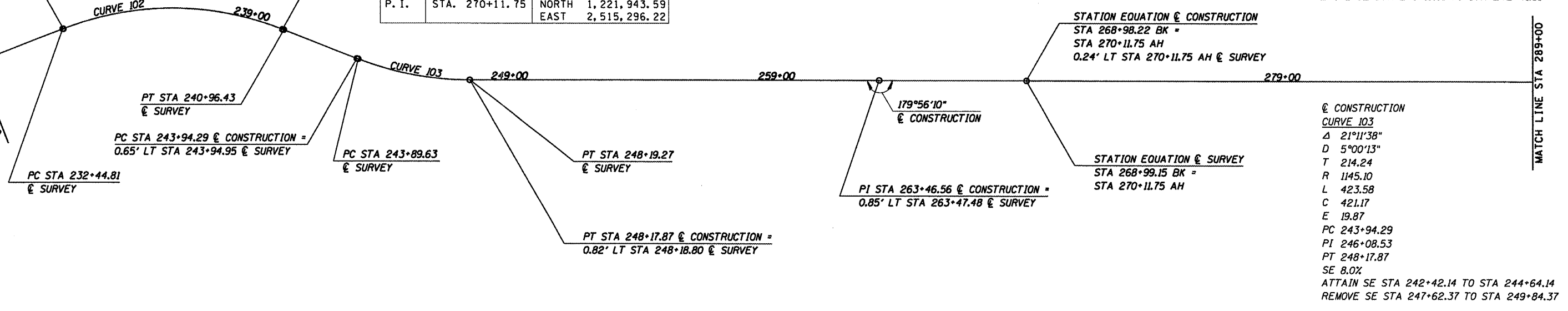
P. C.	STA. 232+46.96	NORTH	1,222,133.70
		EAST	2,511,694.07
P. I.	STA. 236+88.42	NORTH	1,222,291.69
		EAST	2,512,106.29
P. T.	STA. 240+89.66	NORTH	1,222,132.05
		EAST	2,512,517.87
P. C.	STA. 243+94.29	NORTH	1,222,021.89
		EAST	2,512,801.89
P. I.	STA. 246+08.53	NORTH	1,221,944.42
		EAST	2,513,001.63
P. T.	STA. 248+17.87	NORTH	1,221,944.40
		EAST	2,513,215.87
P. I.	STA. 263+46.56	NORTH	1,221,944.26
		EAST	2,514,744.55
P. I.	STA. 270+11.75	NORTH	1,221,943.59
		EAST	2,515,296.22

COORDINATE DATA: CENTERLINE SURVEY

P. C.	STA. 232+44.81	NORTH	1,222,133.49
		EAST	2,511,691.73
P. I.	STA. 236+91.36	NORTH	1,222,294.20
		EAST	2,512,108.36
P. T.	STA. 240+96.43	NORTH	1,222,130.63
		EAST	2,512,523.88
P. C.	STA. 243+89.63	NORTH	1,222,023.22
		EAST	2,512,796.70
P. I.	STA. 246+07.00	NORTH	1,221,943.60
		EAST	2,512,998.97
P. T.	STA. 248+19.27	NORTH	1,221,943.57
		EAST	2,513,216.34
P. I.	STA. 270+11.75	NORTH	1,221,943.35
		EAST	2,515,296.22

@ SURVEY	@ SURVEY	@ CONSTRUCTION
CURVE 102	CURVE 103	CURVE 102
Δ 42°34'52"	Δ 21°28'55"	Δ 42°10'07"
D 5°00'00"	D 5°00'00"	D 5°00'14"
T 446.56	T 217.37	T 441.46
R 1145.91	R 1145.92	R 1145.00
L 851.62	L 429.64	L 842.70
C 832.16	C 427.13	C 823.81
E 83.94	E 20.43	E 82.16
PC 232+44.81	PC 243+89.63	PC 232+46.96
PI 236+91.37	PI 246+07.00	PI 236+88.42
PT 240+96.43	PT 248+19.27	PT 240+89.66
		SE 8.0%

ATTAIN SE STA 230+80.46 TO STA 233+02.46
REMOVE SE STA 240+19.81 TO STA 242+41.81



COORDINATE DATA: CENTERLINE CONSTRUCTION

P. C.	STA. 312+89.77	NORTH	1,221,942.59
		EAST	2,519,574.23
P. I.	STA. 318+00.19	NORTH	1,221,942.47
		EAST	2,520,084.65
P. T.	STA. 323+10.31	NORTH	1,221,912.07
		EAST	2,520,594.17
P. C.	STA. 323+52.38	NORTH	1,221,909.56
		EAST	2,520,636.16
P. I.	STA. 329+01.61	NORTH	1,221,876.84
		EAST	2,521,184.42
P. T.	STA. 334+50.48	NORTH	1,221,878.99
		EAST	2,521,733.65
P. I.	STA. 347+46.29	NORTH	1,221,884.06
		EAST	2,523,029.46

COORDINATE DATA: CENTERLINE SURVEY

P. C.	STA. 312+66.96	NORTH	1,221,943.26
		EAST	2,519,551.43
P. I.	STA. 317+67.09	NORTH	1,221,943.25
		EAST	2,520,051.56
P. T.	STA. 322+66.93	NORTH	1,221,914.16
		EAST	2,520,550.84
P. C.	STA. 323+81.51	NORTH	1,221,907.49
		EAST	2,520,665.22
P. I.	STA. 329+21.68	NORTH	1,221,876.07
		EAST	2,521,204.47
P. T.	STA. 334+61.49	NORTH	1,221,878.38
		EAST	2,521,744.63
P. I.	STA. 347+46.33	NORTH	1,221,883.86
		EAST	2,523,029.46

@ SURVEY	@ SURVEY	@ CONSTRUCTION	@ CONSTRUCTION
CURVE 104	CURVE 105	CURVE 104	CURVE 105
Δ 3°20'00"	Δ 3°44'45"	Δ 3°24'07"	Δ 3°38'22"
D 0°20'00"	D 0°19'53"	D 0°20'00"	D 0°19'53"
T 500.13	T 540.17	T 510.42	T 549.24
R 17188.80	R 17288.74	R 17188.13	R 17287.64
L 999.97	L 1079.98	L 1020.54	L 1098.10
C 999.83	C 1079.80	C 1020.39	C 1097.92
E 7.27	E 8.44	E 7.58	E 8.72
PC 312+66.96	PC 323+81.51	PC 312+89.77	PC 323+52.38
PI 317+67.09	PI 329+21.68	PI 318+00.19	PI 329+01.61
PT 322+66.93	PT 334+61.49	PT 323+10.31	PT 334+50.48
		NORMAL CROWN	NORMAL CROWN

CUMMINS
ENGINEERING
CORPORATION

JOB = 2217	DESIGNED - NAK	REVISED -
FILE NAME = 2217align.dgn	DRAWN - AJH	REVISED -
PLOT SCALE = 1/8" = 100.000' / IN.	CHECKED - NAK	REVISED -
PLOT DATE = 1/20/2009	DATE - 11/03/2008	REVISED -

LOGAN COUNTY
CH 10, TR 199A, TR 92 IMPROVEMENTS

ALIGNMENT

STA. 229+00 TO STA. 349+00

F.A.S. RTE.	SECTION	COUNTY	TOTAL SHEETS	SHEET NO.
566	05-00113-00-WR	LOGAN	63	17
CH 10, TR 199A, TR 92		CONTRACT NO.		
FED. ROAD DIST. NO.		ILLINOIS FED. AID PROJECT		