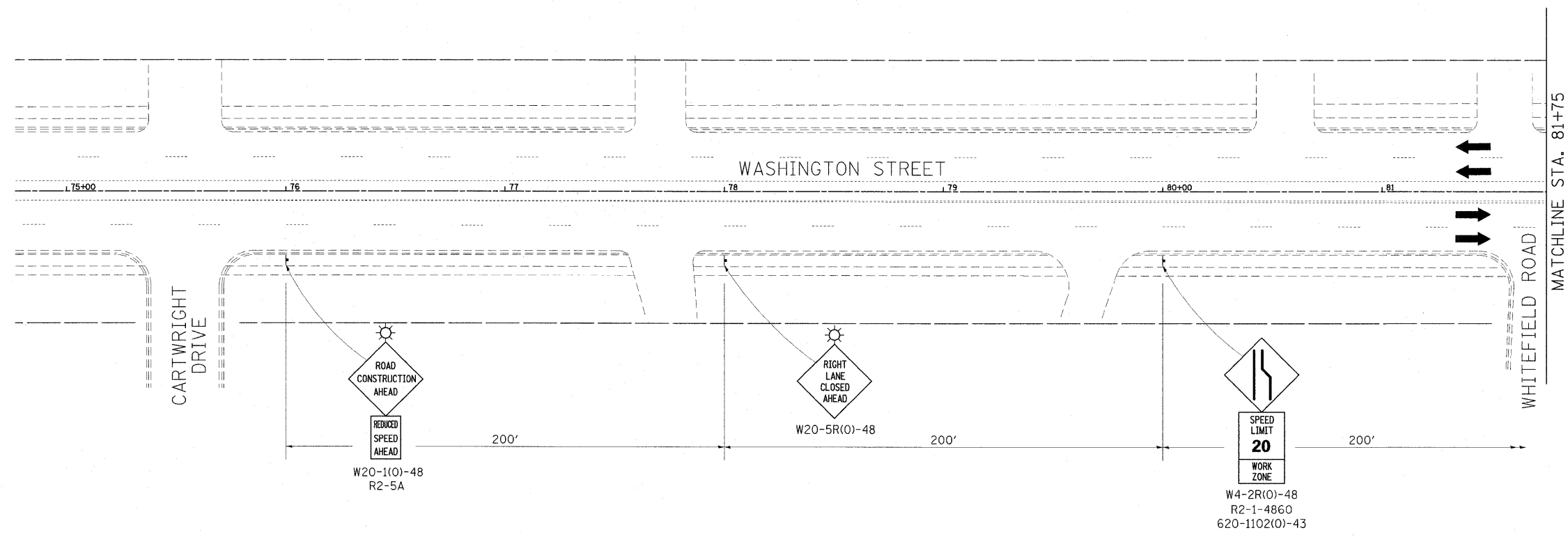


LEGEND

	WORK AREA
	TEMPORARY CONCRETE BARRIER
	TEMPORARY IMPACT ATTENUATOR
	SIGN ON PORTABLE OR PERMANENT SUPPORT
	TYPE C BIDIRECTIONAL REFLECTOR (INCLUDED WITH THE COST FOR CONCRETE BARRIER)
	DRUM
	FLEXIBLE DELINEATOR
	RAISED REFLECTIVE PAVEMENT MARKER, TYPE 2
	TYPE III BARRICADE
	LIGHTS, TYPE A

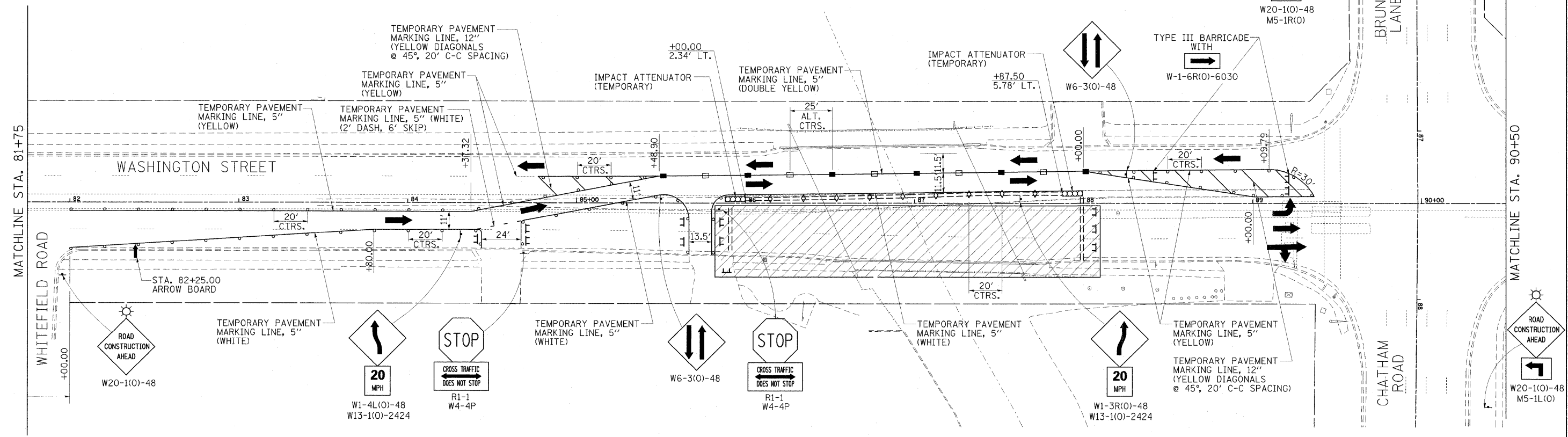
TRAFFIC CONTROL STANDARDS
701306, 701321, 701606, 701801



STAGE I - TRAFFIC CONTROL ITEMS

TEMPORARY PAVEMENT MARKING - LINE 5"	3204 FOOT
TEMPORARY PAVEMENT MARKING - LINE 12"	173 FOOT
WORK ZONE PAVEMENT MARKING REMOVAL	3377 FOOT
TEMPORARY CONCRETE BARRIER	237.5 FOOT
TEMPORARY RAISED REFLECTIVE PAVEMENT MARKER	5 EACH
FLEXIBLE DELINEATORS	6 EACH
IMPACT ATTENUATORS (TEMPORARY)	2 EACH

- STAGE I**
- WORK IN STAGE I SHALL CONSIST OF THE FOLLOWING:
1. REMOVAL EXISTING CORRUGATED MEDIAN FROM STA. 88+00.00 TO STA. 89+35.00 PRIOR TO INSTALLATION OF STAGE I TRAFFIC CONTROL.
 2. INSTALLATION OF TEMPORARY CONCRETE BARRIER, ADVANCE WARNING SIGNS, BARRICADES, TEMPORARY IMPACT ATTENUATORS, TEMPORARY PAVEMENT MARKINGS, FLEXIBLE DELINEATORS, AND TYPE C REFLECTORS AS SHOWN ON STAGE I TRAFFIC CONTROL PLAN.
 3. REMOVAL OF THE EASTBOUND BRIDGE DECK AND THE APPROACH PAVEMENTS.
 4. CONSTRUCTION OF THE NEW EASTBOUND SUPERSTRUCTURE AND APPROACH PAVEMENTS.



FILE NAME =	USER NAME = Brad Downen	DESIGNED - BJD	REVISED -
...\\Sheets\MOT_STG 1.SHT01.DGN		DRAWN - GLD	REVISED -
	PLOT SCALE = 30.0000' / IN.	CHECKED - SPH	REVISED -
	PLOT DATE = 3/10/2009	DATE - 03/10/2009	REVISED -

**CITY OF SPRINGFIELD
SPRINGFIELD, ILLINOIS**

**MAINTENANCE OF TRAFFIC STAGE I
S.N. 084-6001 (E)
WASHINGTON STREET OVER JACKSONVILLE BRANCH**

SCALE: SHEET NO. OF SHEETS STA. TO STA.

F.A.U. RTE.	SECTION	COUNTY	TOTAL SHEETS	SHEET NO.
7977	05-00443-00-BR	SANGAMON	28	6
FED. ROAD DIST. NO. 6 ILLINOIS FED. AID PROJECT			CONTRACT NO. 3485	

• CITY OF SPRINGFIELD