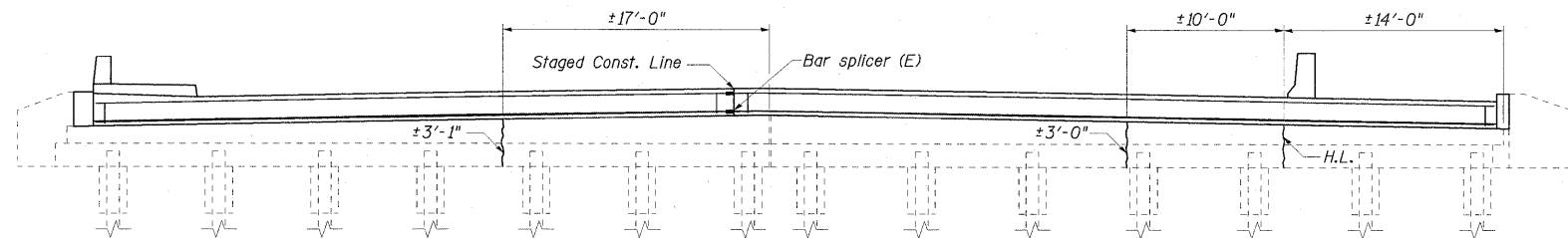
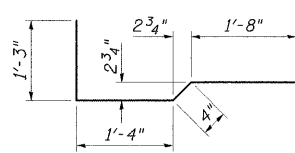


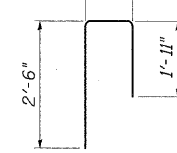
**WEST ABUTMENT PLAN**



**ELEVATION**



**BAR S3(E)**

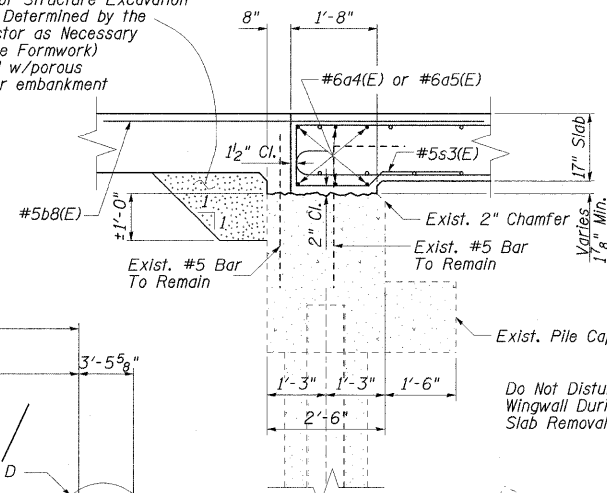


**BAR V(E)**

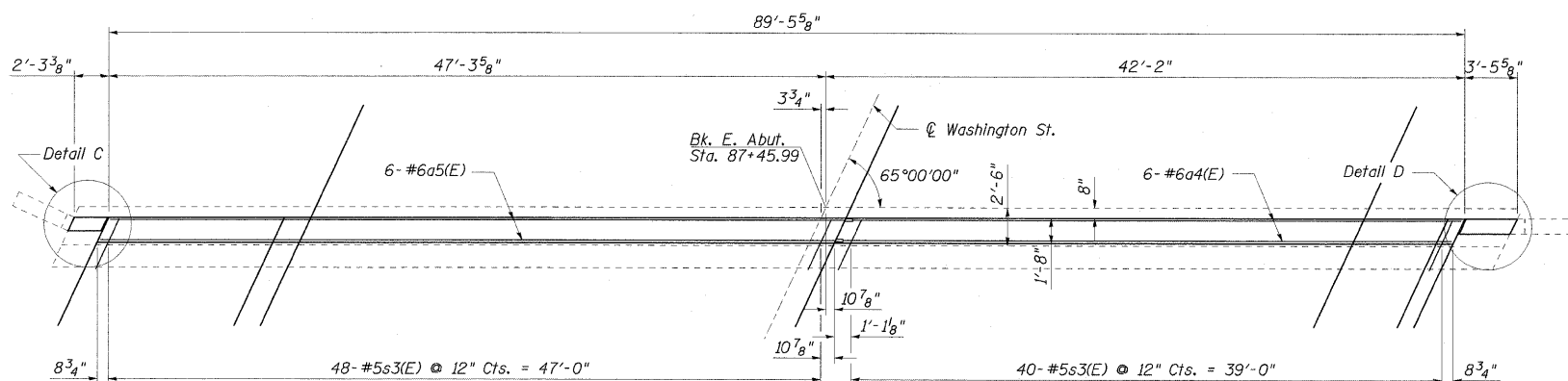
**LEGEND**

- ±3'-0" Epoxy Crack Sealing
- H.L. Hairline Crack - Not to be Sealed

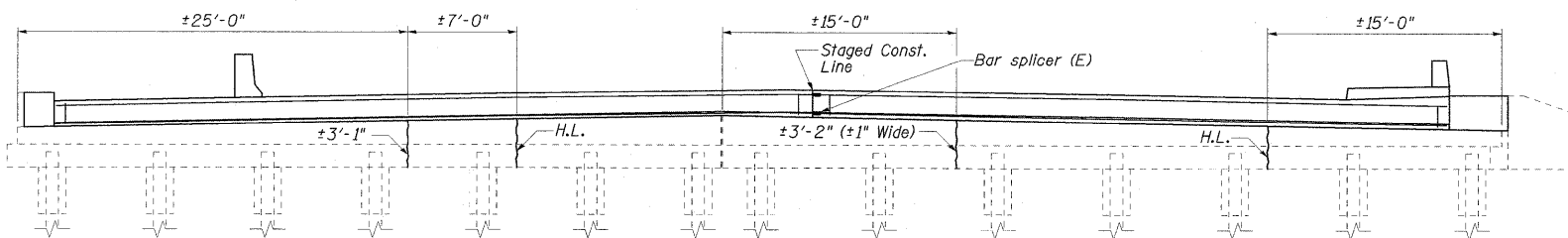
Limits of Structure Excavation  
(To be Determined by the Contractor as Necessary to Place Formwork)  
Backfill w/porous granular embankment



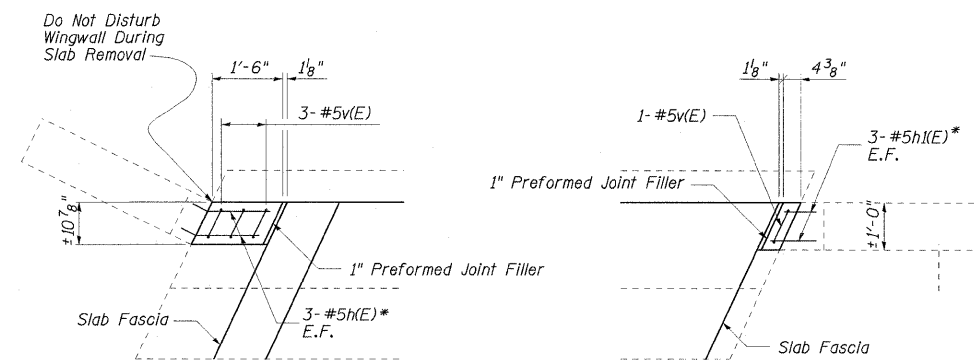
**SECTION THRU ABUTMENT**



**EAST ABUTMENT PLAN**

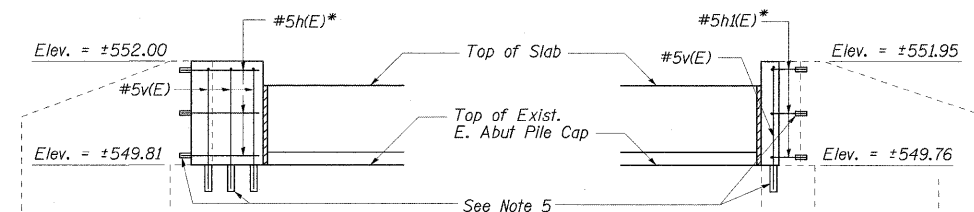


**ELEVATION**



**PLAN**

**PLAN**



**ELEVATION**

**ELEVATION**

**DETAIL A**

**DETAIL B**

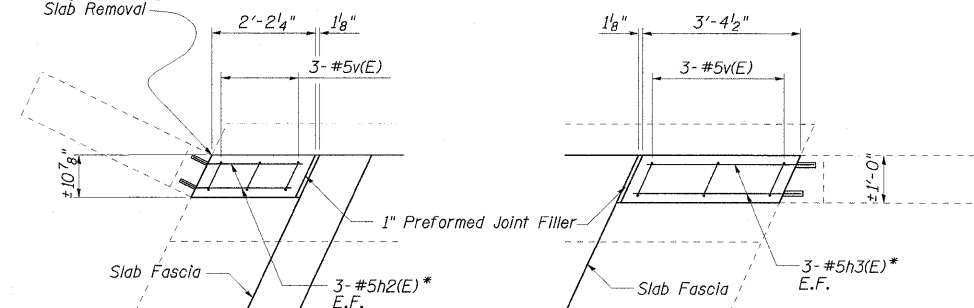
\*Bent to fit in field

**BILL OF MATERIAL**

Item	Unit	Quantity
Porous Granular Embankment	Cu. Yd.	18
Structure Excavation	Cu. Yd.	21
Epoxy Crack Injection	Foot	13

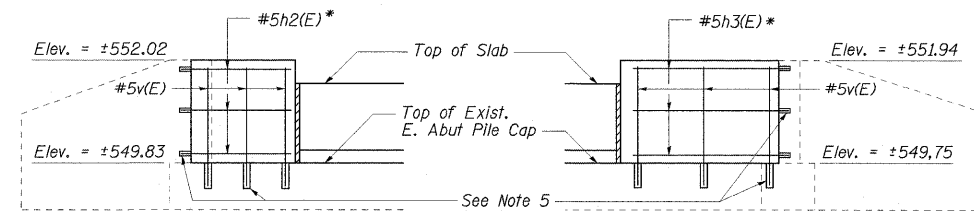
**NOTES:**

1. Existing reinforcement shall be cleaned and incorporated into the new construction. Cost included with Concrete Removal.
2. Remove Exist. #5 Bars Outside of Approach Pavement Limits.
3. Crack Widths Are ±1/8" Unless Otherwise Noted.
4. See Sheet 7 of 16 For Superstructure Details
5. Core and set #5 bars according to Article 509.06 of the Standard Specifications. Cored holes shall be roughened or scored per manufacturer's recommendations. Maximum depth of hole shall not exceed 6".
6. Reinforcement billed on Sheet 7 of 16.



**PLAN**

**PLAN**



**ELEVATION**

**ELEVATION**

**DETAIL C**

**DETAIL D**

FILE NAME = ...NE & W Abut.dgn

USER NAME = Brad Downen  
PLOT SCALE = 6.0000' / IN.  
PLOT DATE = 3/10/2009

DESIGNED - SF  
DRAWN - GLD  
CHECKED - WLB  
DATE - 03/10/2009

REVISED -  
REVISED -  
REVISED -  
REVISED -

**CITY OF SPRINGFIELD  
SPRINGFIELD, ILLINOIS**

**EAST & WEST ABUTMENT  
STATION 86+95.74 S.N. 084-6001 (E)  
WASHINGTON STREET OVER JACKSONVILLE BRANCH**

SCALE: SHEET NO. OF SHEETS STA. TO STA.

SHEET 14 OF 16 SHEETS  
F.A.U. RTE. SECTION COUNTY TOTAL SHEETS SHEET NO.  
7977 05-00443-00-BR SANGAMON 28 25  
CONTRACT NO. 93485  
FED. ROAD DIST. NO. 6 ILLINOIS FED. AID PROJECT  
CITY OF SPRINGFIELD