

RTE.	SECTION	COUNTY	TOTAL SHEETS	SHEET NO.
TR338	01-16117-00-BR	SHELBY	15	1

INDEX OF SHEETS

- 1 COVER SHEET
- 2 SUMMARY OF QUANTITIES
- 3 PLAN AND PROFILE
- 4 BRIDGE PLAN AND ELEVATION
- 5 DECK BEAM DETAILS
- 6 TYPE S-1 STEEL RAILING
- 7 ABUTMENT DETAILS
- 8 PILING SPlice DETAIL
- 9 EROSION CONTROL PLAN
- 10-15 CROSS SECTIONS

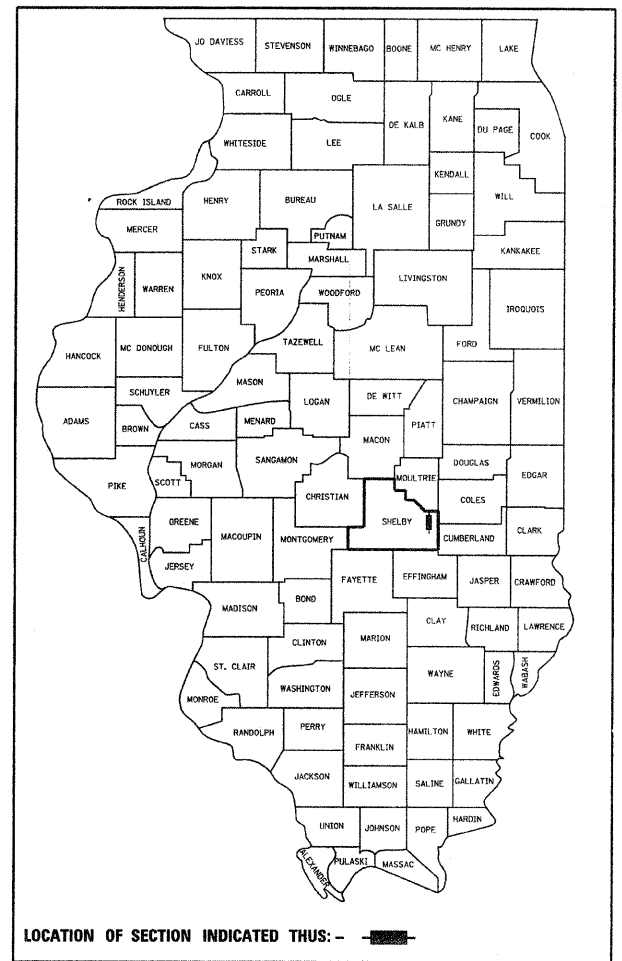
STATE OF ILLINOIS
DEPARTMENT OF TRANSPORTATION
DIVISION OF HIGHWAYS

PLANS FOR PROPOSED HIGHWAY BRIDGE PROGRAM

SECTION 01-16117-00-BR
RICHLAND TOWNSHIP
TR 338
SHELBY COUNTY

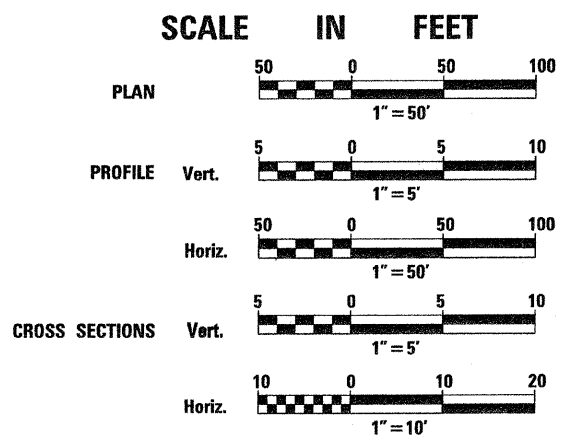
JOB NO. C-97-072-09
PROJECT NO. BROS-173(162)

R 8E , 3 P.M.



STANDARDS

000001-05	STANDARD SYMBOLS, ABBREVIATIONS AND PATTERNS.
280001-04	TEMPORARY EROSION CONTROL SYSTEMS.
515001-03	NAME PLATES FOR BRIDGES.
635006-03	REFLECTOR AND TERMINAL MARKER PLACEMENT
701901-01	TRAFFIC CONTROL DEVICES.
BLR 21-8	TYPICAL APPLICATION OF TRAFFIC CONTROL DEVICES FOR CONSTRUCTION ON RURAL LOCAL HIGHWAYS.



UTILITIES:

Shelby Electric Coop
Rt. 128 N
Shelbyville Illinois
(217) 774-3986

Consolidated Telephone Co.
121 S. 17th Street
Mattoon Illinois
(217) 235-3311

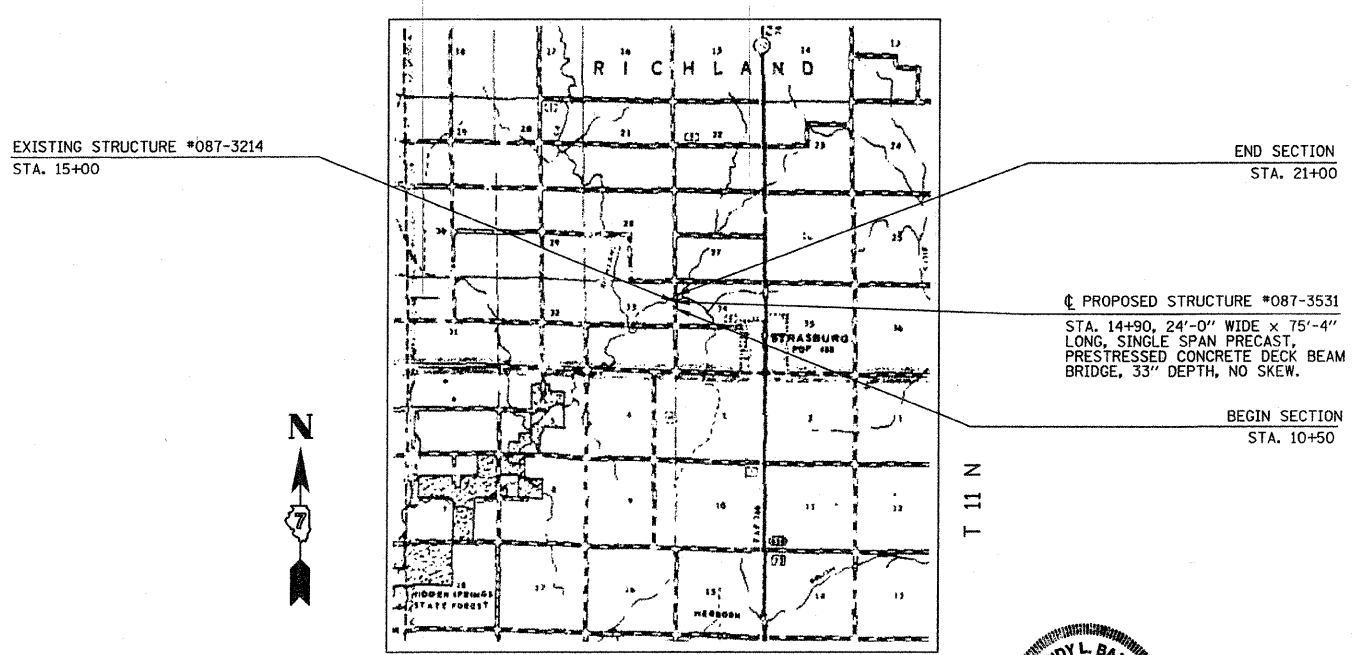
Lincoln Prairie Water
(217) 774-3986

ADT-CURRENT 75 DESIGN ADT 100
CLASS-LOCAL ROAD
DESIGN SPEED-30 MPH
DESIGN YEAR 2030

CONTRACT NO 95573

THE UPCHURCH GROUP
architects engineers surveyors environmental consultants

HILLSIDE, IL. (708) 449-2321
MATTOON, IL. (217) 235-3177



LOCATION MAP

TOTAL LENGTH OF PROJECT = 1200 FT. = 0.22 MILES
NET LENGTH OF PROJECT = 1050 FT. = 0.20 MILES

ANDY L. BAKER
062-057920
LICENSED PROFESSIONAL ENGINEER OF ILLINOIS
3.9.09

ANDY L. BAKER, P.E. LICENSE EXPIRATION DATE 11-30-09

J.U.L.I.E.
JOINT UTILITY LOCATION INFORMATION FOR EXCAVATION
1-800-892-0123

APPROVED ^{3-17 20 09} [Signature] COUNTY ENGINEER

APPROVED ^{3-17 20 09} [Signature] HIGHWAY COMMISSIONER

PASSED ^{4/3 20 09} [Signature] DISTRICT SEVEN ENGINEER OF LOCAL ROADS AND STREETS

Releasing For Bid Based on Limited Review ^{4/3 20 09} [Signature] DEPUTY DIRECTOR OF HIGHWAYS REGION FOUR ENGINEER STATE OF ILLINOIS DEPARTMENT OF TRANSPORTATION

COVER ALB 02-09-09 1:1