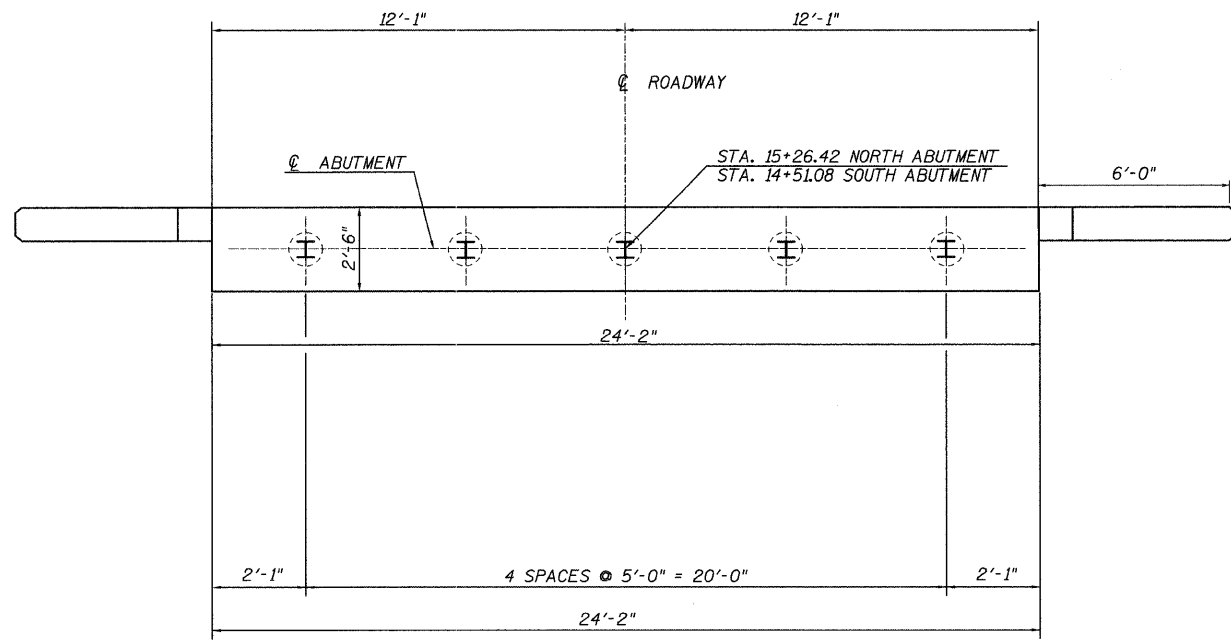


F.A. RTE.	SECTION	COUNTY	TOTAL SHEETS	SHEET NO.
338	01-16117-00	Shelby	15	7
STA. 14+54.33		TO STA. 15+25.67		
FED. ROAD DIST. NO.		ILLINOIS	FED. AID PROJECT	



PLAN
SCALE: 3/8" = 1'-0"

BILL OF MATERIAL

ONE ABUTMENT (INCLUDES BOTH WINGS)				
BAR	SIZE	NO. REQ'D.	LENGTH	SHAPE
h	#5	28	8'-6"	—
h ₁	#5	3	23'-8"	—
p	#7	6	23'-8"	—
s	#4	26	9'-5"	□
u	#6	8	12'-1"	—
v	#5	28	8'-1"	—
v ₁	#5	25	4'-11"	—
STRUCTURE EXCAVATION			CU. YDS.	6.5
CONCRETE STRUCTURES			CU. YDS.	9.5
CONCRETE ENCASEMENT			CU. YDS.	1.4
REINFORCEMENT BARS			POUNDS	1286
STEEL PILES HP 10X42 (S. ABUT.)			LIN. FT.	100
STEEL PILES HP 10X42 (N. ABUT.)			LIN. FT.	92
TEST PILE (N.&S ABUTMENT)			EACH	2

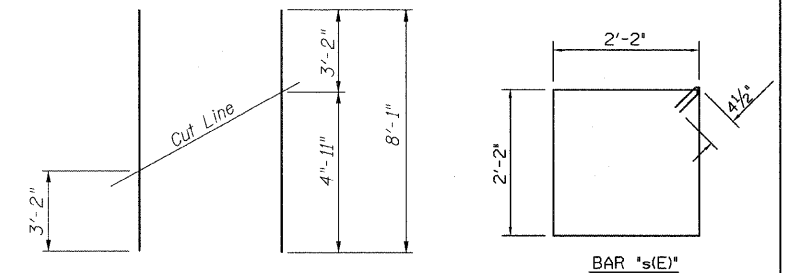
PILE DATA

Type: Steel HP 10X42
No. Required: 10*
Nominal Required Bearing: 335 kips
Allowable Resistance Available: 112 kips
Est. Length (N. Abut.): 25 Ft.
Est. Length (S. Abut.): 23 Ft.

*Includes one Test Pile at North Abutment and one Test Pile at South Abutment

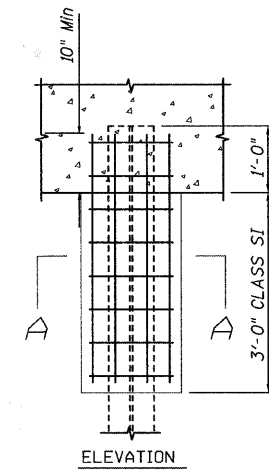
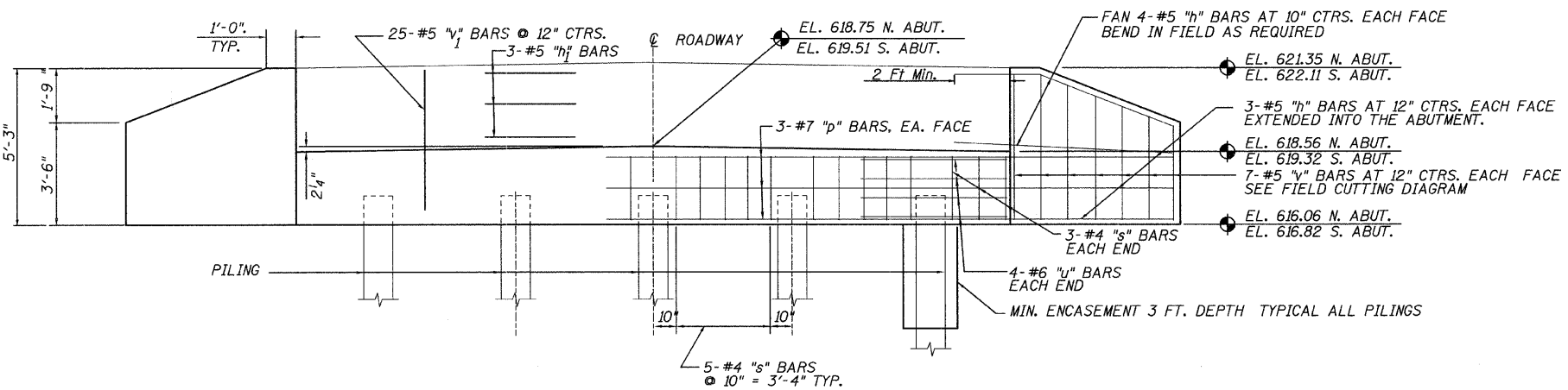
NOTES

The steel H-piles shall be according AASHTO M 270 Grade 50
When test piles are specified, the following note shall be added:
The test pile(s) shall be driven to 110% of the normal required bearing indicated in the pile data information.

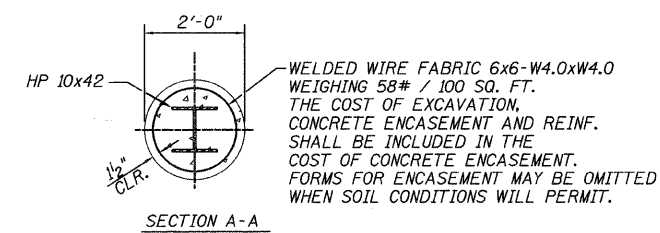


FIELD CUTTING DIAGRAM

Order v(E) bars full length. Cut as shown and use remainder of bars in opposite face.



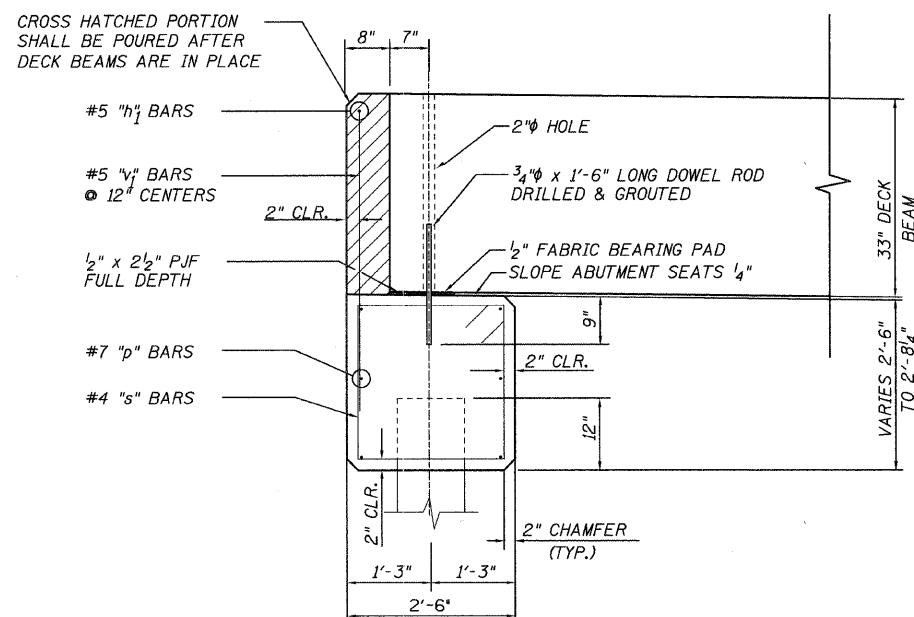
ELEVATION



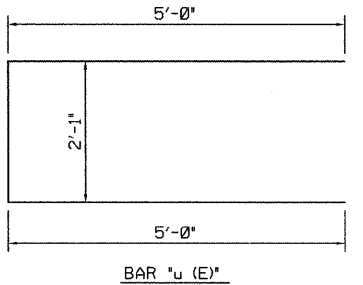
SECTION A-A

PILE ENCASEMENT DETAILS

SCALE: 3/4" = 1'-0"



SECTION THRU ABUTMENT
SCALE: 3/4" = 1'-0"



REINFORCEMENT BARS
SCALE: 3/4" = 1'-0"

REVISIONS	
NAME	DATE

ILLINOIS DEPARTMENT OF TRANSPORTATION
ABUTMENT DETAILS
TR 338 OVER TRIBUTARY TO RICHLAND CREEK
SECTION 01-16117-00-BR
SHELBY COUNTY
STA 14+90
STRUCTURE NO. 087-3531
SCALE: DATE
DRAWN BY Baker
CHECKED BY MJS