

ROUTE	SECTION	COUNTY	TOTAL SHEETS	SHEET NO.
F.A.S. 704	06-00105-00-FP	JASPER	2	1
F.A.S. 704	06-00107-00-FP			
CONTRACT NO. 95579		ILLINOIS	PROJECT ARA-RS-704(138)	

STATE OF ILLINOIS  
DEPARTMENT OF TRANSPORTATION  
DIVISION OF HIGHWAYS  
PLANS FOR PROPOSED  
FEDERAL AID SECONDARY PROJECT

INDEX OF SHEETS

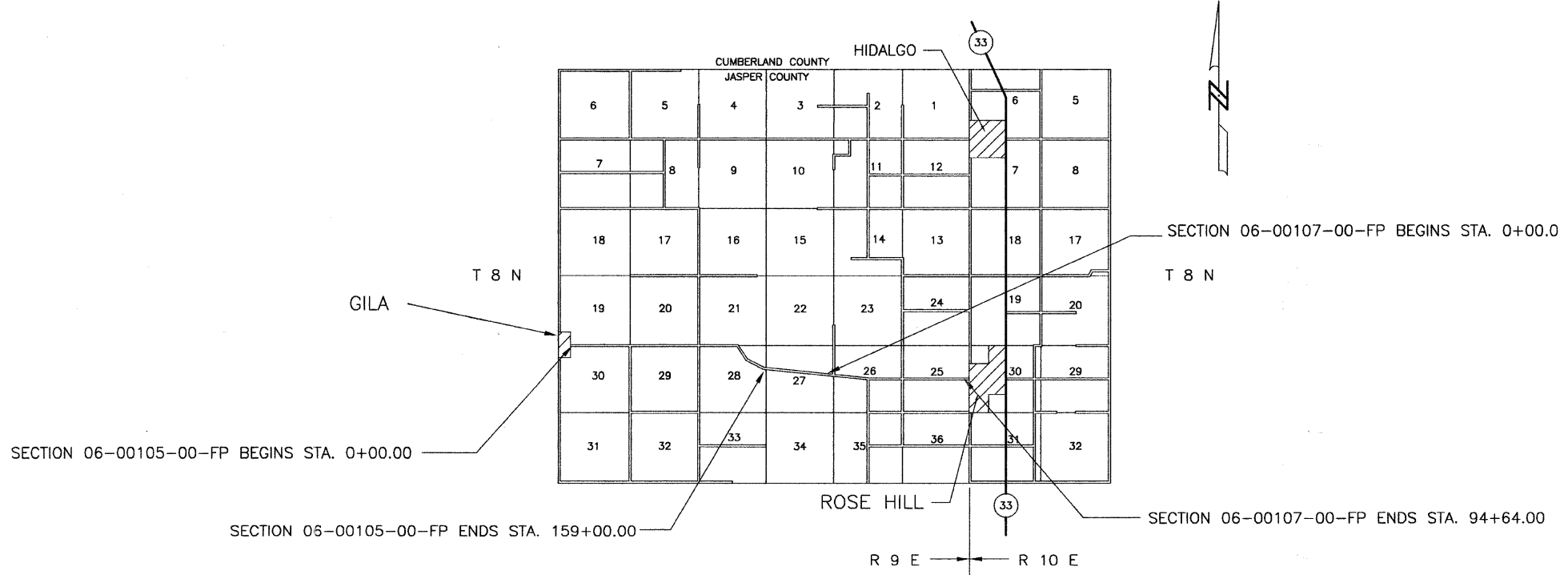
SHEET	ITEM
1	COVER SHEET
2	SUMMARY OF QUANTITIES
	STANDARD 000001-05
	STANDARD 701901-01
	BLR-22-6

JASPER COUNTY  
SECTION 06-00105-00-FP  
SECTION 06-00107-00-FP  
F.A.S. 704  
COUNTY HIGHWAY 6  
JOB NO. C-97-079-09  
PROJECT NO. ARA-RS-704(138)

THESE PLANS WERE PREPARED BY ME, OR A FULL TIME MEMBER OF MY STAFF, WORKING UNDER MY PERSONAL SUPERVISION.



*Richard A. Pettison* 3-19-09  
ILLINOIS REG. PROF. ENG. 38893 DATE  
LICENSE EXPIRES 11/30/09  
12871 EAST STATE HWY 33  
NEWTON, ILLINOIS 62448  
PHONE 618-783-2915



RURAL MAJOR COLLECTOR  
ADT = 450  
DESIGN SPEED = 40 MPH  
CONTRACT NO. 95579

Joint Utility Locating Information for Excavators  
JULIE 1-800-892-0123

NET LENGTH SECTION 06-00105-00-FP = 15,900.0 Ft. = 3.011 Mi.  
NET LENGTH SECTION 06-00107-00-FP = 9,464.0 Ft. = 1.792 Mi.  
TOTAL = 25,364.0 Ft. = 4.803 Mi.

APPROVED 3-19 2009  
*Richard A. Pettison*  
COUNTY ENGINEER

PASSED 4-1 2009  
*Mammie Kraft*  
DISTRICT SEVEN ENGINEER OF  
LOCAL ROADS & STREETS

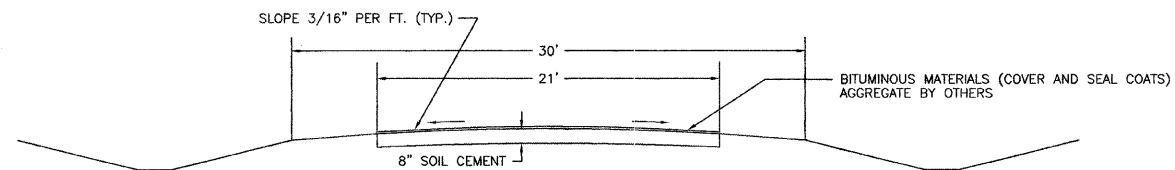
Releasing For  
Bid Based on 4-1 2009  
Limited Review

*Roger L. Ansheloff*  
DEPUTY DIRECTOR OF HIGHWAYS,  
REGION FOUR ENGINEER

STATE OF ILLINOIS  
DEPARTMENT OF TRANSPORTATION

ROUTE	SECTION	COUNTY	TOTAL SHEETS	SHEET NO.
F.A.S. 704	06-00105-00-FP	JASPER	2	2
F.A.S. 704	06-00107-00-FP	ILLINOIS	PROJECT ARA-RS-704(138)	
CONTRACT # 95579				

TYPICAL SECTION OF PROPOSED IMPROVEMENT

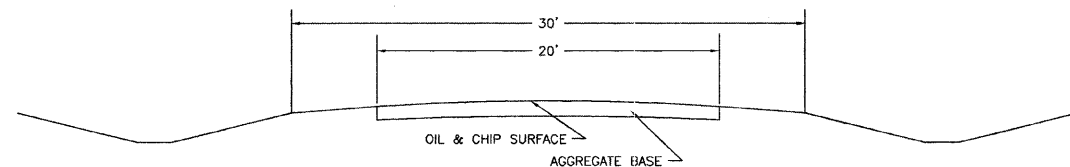


STA. 0+00.00 TO STA. 159+00.00 - SECTION: 06-00105-00-FP  
 STA. 0+00.00 TO STA. 94+64.00 - SECTION: 06-00107-00-FP

PAVEMENT DESIGN DATA

CLASS IV ROAD  
 SEC: 105 SEC: 107  
 STRUCTURAL DESIGN TRAFFIC (S.D.T.) 2028 PC = 396 PC = 396  
 SU = 40 SU = 40  
 MU = 14 MU = 14  
 MINIMUM SOIL SUPPORT: I.B.U. = 3  
 PERCENT OF S.D.T. IN TRAFFIC LANE P = 50% P = 50%  
 S = 50% S = 50%  
 M = 50% M = 50%  
 TRAFFIC FACTOR = 0.016 0.016  
 STRUCTURAL NUMBER = 1.5 1.5  
 PAVEMENT STRUCTURE MATERIALS:  
 STAGE 1 - 8" SOIL-CEMENT BASE COURSE (500 PSI MIN.)  
 A-2 SEAL COAT (AGGREGATE BY OTHERS)  
 STAGE 2 - 2" CLASS 1 21' WIDE (FUTURE)

TYPICAL SECTION OF EXISTING ROAD



STA. 0+00.00 TO STA. 159+00.00 - SECTION: 06-00105-00-FP  
 STA. 0+00.00 TO STA. 94+64.00 - SECTION: 06-00107-00-FP

SECTION 06-00105-00-FP  
 SUMMARY OF QUANTITIES

QUANTITY	UNIT	ITEM	CODE NUMBER
37,100	SQ. YD.	PROCESSING SOIL-CEMENT BASE COURSE 8"	35200300
21,748	100 WT.	CEMENT	35200500
22,260	GALLON	BITUMINOUS MATERIALS (COVER AND SEAL COATS)	40300300

SECTION 06-00107-00-FP  
 SUMMARY OF QUANTITIES

QUANTITY	UNIT	ITEM	CODE NUMBER
22,083	SQ. YD.	PROCESSING SOIL-CEMENT BASE COURSE 8"	35200300
12,945	100 WT.	CEMENT	35200500
13,250	GALLON	BITUMINOUS MATERIALS (COVER AND SEAL COATS)	40300300

TOTAL PROJECT  
 SUMMARY OF QUANTITIES

QUANTITY	UNIT	ITEM	CODE NUMBER
59,183	SQ. YD.	PROCESSING SOIL-CEMENT BASE COURSE 8"	35200300
34,693	100 WT.	CEMENT	35200500
35,510	GALLON	BITUMINOUS MATERIALS (COVER AND SEAL COATS)	40300300
1	LUMP SUM	MOBILIZATION	67100100