

F.A.S. RTE.	SECTION	COUNTY	TOTAL SHEETS	SHEET NO.
642	99-00124-03-PV	COLES	97	1

D-95-025-97

UTILITY NOTE

THE LOCATIONS OF THOSE BURIED AND ABOVEGROUND UTILITIES SHOWN ARE APPROXIMATE, ARE SHOWN FOR CONTRACTOR INFORMATIONAL USE ONLY, AND ARE NOT TO BE REFERENCED FOR CONSTRUCTION PURPOSES. THE IMPLIED PRESENCE OR ABSENCE OF UTILITIES IS NOT TO BE CONSTRUED BY THE OWNER, ENGINEER, CONTRACTOR, OR SUBCONTRACTORS TO BE AN ACCURATE AND COMPLETE REPRESENTATION OF UTILITIES THAT MAY OR MAY NOT EXIST ON THE CONSTRUCTION SITE. BURIED AND ABOVEGROUND UTILITY LOCATION, IDENTIFICATION, AND MARKING ARE THE SOLE RESPONSIBILITY OF THE CONTRACTOR. REPORTING, DISCONNECTION, PROTECTION, ETC. OF ANY UTILITIES MUST BE COORDINATED BETWEEN THE CONTRACTOR, UTILITY COMPANY, AND OWNER. SITE SAFETY, INCLUDING THE AVOIDANCE OF HAZARDS ASSOCIATED WITH BURIED AND ABOVEGROUND UTILITIES, REMAIN THE SOLE RESPONSIBILITY OF THE CONTRACTOR.

J.U.L.I.E.
JOINT UTILITY LOCATION INFORMATION FOR EXCAVATION
1-800-892-0123

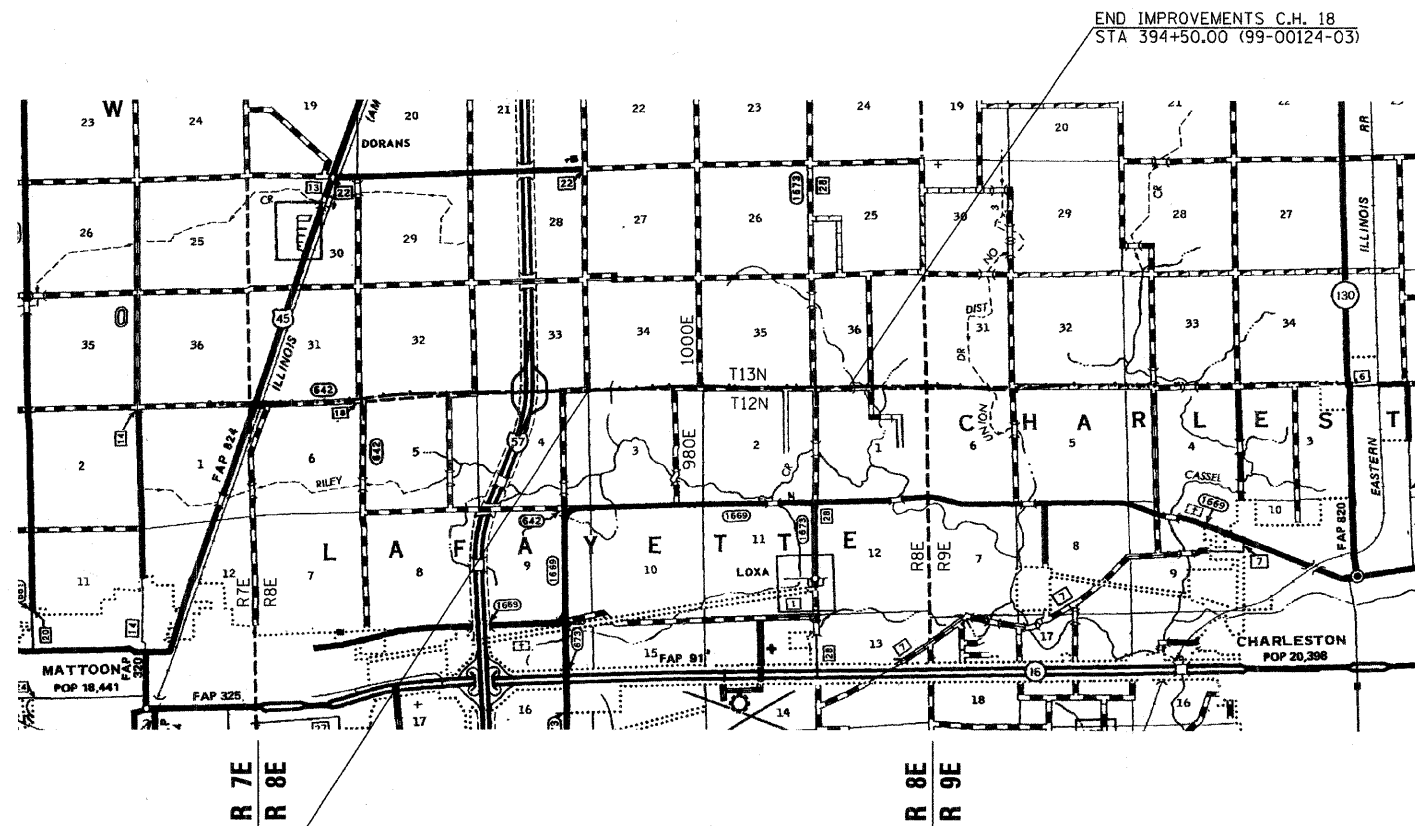
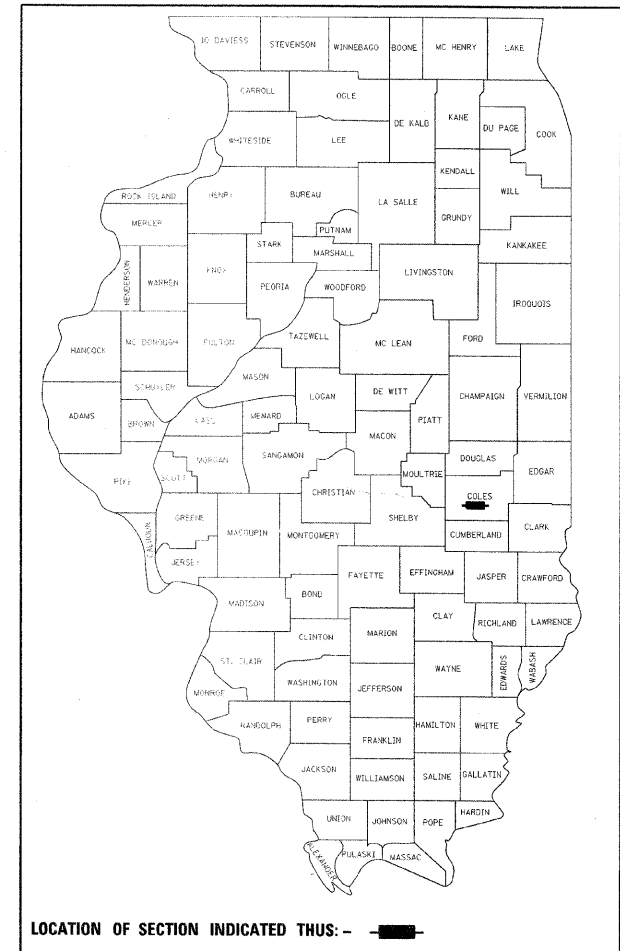
HUMBOLDT TOWNSHIP
LAFAYETTE TOWNSHIP

STATE OF ILLINOIS
DEPARTMENT OF TRANSPORTATION
DIVISION OF HIGHWAYS
PROPOSED
HIGHWAY PLANS
FAS ROUTE 642 (C.H. 18)
SECTION 99-00124-03-PV
ARA-RS-642 (123)
COLES COUNTY
C-97-077-09

UTILITY NOTE

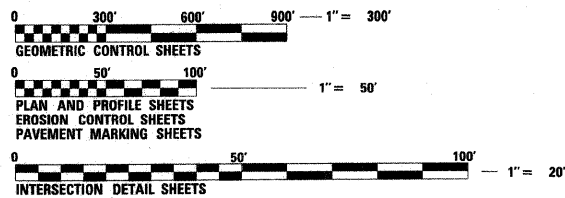
UTILITY LINES WERE PLOTTED FROM INFORMATION FURNISHED BY THE VARIOUS UTILITY COMPANIES INVOLVED (QUALITY LEVEL C &/OR QUALITY LEVEL D) AND THE ACCURACY SHOULD BE CONSIDERED APPROXIMATE ONLY. UTILITY COMPANIES MAY BE ADJUSTING THEIR FACILITIES DURING CONSTRUCTION. THE CONTRACTOR SHALL COOPERATE WITH THESE ORGANIZATIONS WHILE THESE ADJUSTMENTS ARE BEING PERFORMED. J.U.L.I.E. - JOINT UTILITY LOCATION INFORMATION FOR EXCAVATORS SYSTEM (800)89 0123.

FOR INDEX OF SHEETS, SEE SHEET NO. 2
FOR LIST OF STANDARDS, SEE SHEET NO. 2
FOR GENERAL NOTES, SEE SHEET NO. 6



Susan K. McCormick
 SIGNATURE
 March 24, 2009
 DATE
 LIC. EXP. DATE: 11/30/2009

CONTRACT # 95580



FULL SIZE PLANS HAVE BEEN PREPARED USING STANDARD ENGINEERING SCALES. REDUCED SIZED PLANS WILL NOT CONFORM TO STANDARD SCALES. IN MAKING MEASUREMENTS ON REDUCED PLANS, THE ABOVE SCALES MAY BE USED.

DESIGN DESIGNATION : ADT = 8,400
FUNCTIONAL CLASSIFICATION = MAJOR COLLECTOR
DESIGN SPEED = 60 mph
GROSS LENGTH OF PROJECT = 11,650 ft. (2.21 mi.)
NET LENGTH OF PROJECT = 11,650 ft. (2.21 mi.)

APPROVED	<i>M.A. J...</i>	MARCH 25	20 09
	COUNTY ENGINEER		
APPROVED			20
	ROAD COMMISSIONER		
PASSED	<i>M...</i>	4-16	20 09
	DISTRICT SEVEN ENGINEER OF LOCAL ROADS & STREETS		
Releasing For Bid Based on Limited Review	<i>R...</i>	4-16	20 09
	DEPUTY DIRECTOR OF HIGHWAYS, REGION FOUR ENGINEER		
	STATE OF ILLINOIS DEPARTMENT OF TRANSPORTATION		

© Copyright Hanson Professional Services Inc. 2008
HANSON
 DESIGNED BY: SUSAN MCCORMICK - 217-788-2450
 03/24/09
 DRAWN: DJP
 CHECKED: SKM
 DATE: 01/29/04