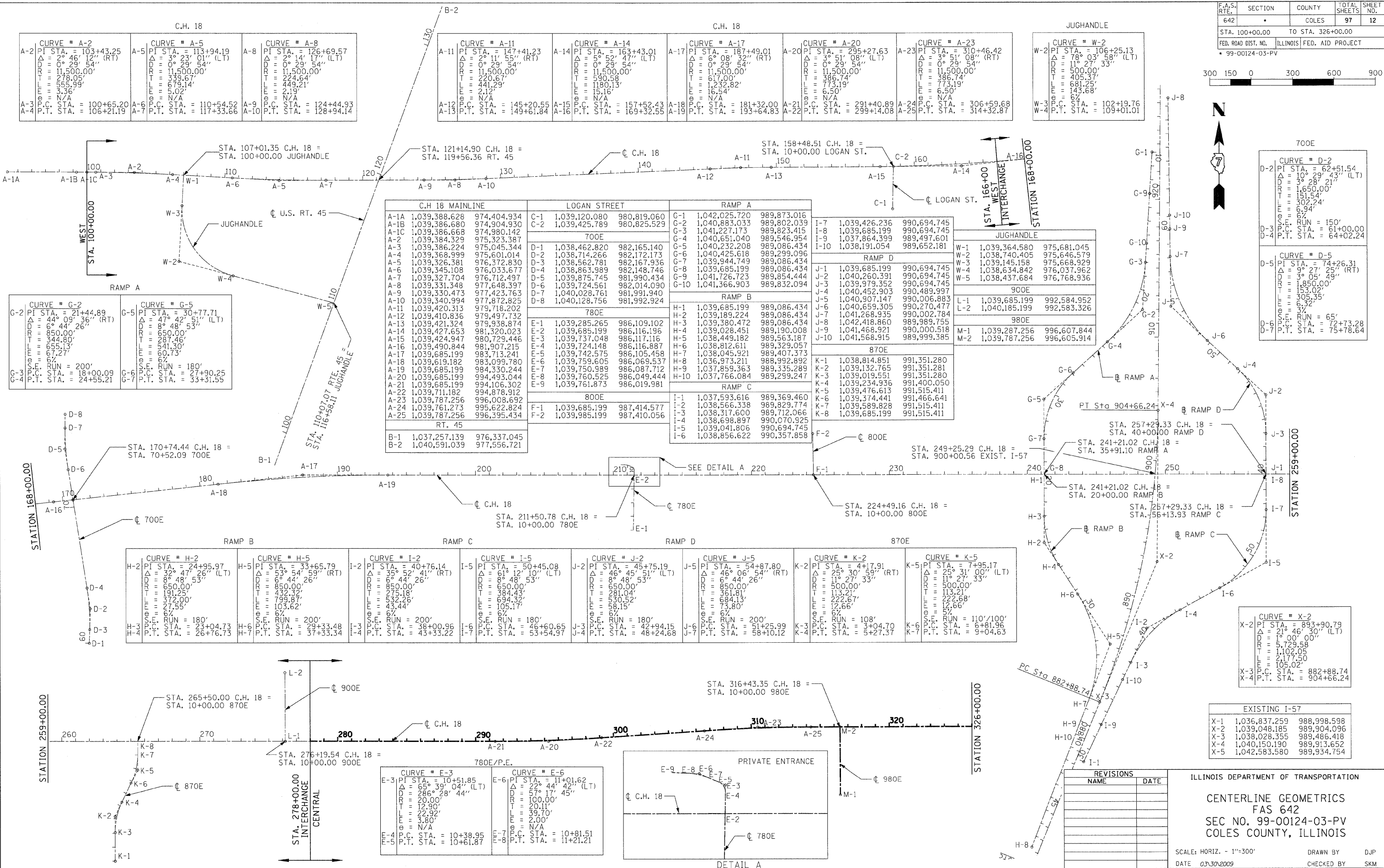
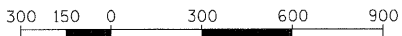


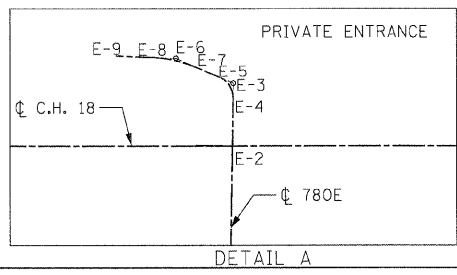
F.A.S. RTE.	SECTION	COUNTY	TOTAL SHEETS	SHEET NO.
642	COLES	97	12	
STA. 100+00.00		TO STA. 326+00.00		
FED. ROAD DIST. NO.		ILLINOIS		FED. AID PROJECT
* 99-00124-03-PV				



C.H. 18 MAINLINE		LOGAN STREET		RAMP A	
A-1A	1,039,388.628	C-1	1,039,120.080	G-1	1,042,025.720
A-1B	1,039,386.680	C-2	1,039,425.789	G-2	1,040,883.033
A-1C	1,039,386.668	700E		G-3	1,041,227.173
A-2	1,039,384.329	D-1	1,038,462.820	G-4	1,040,651.040
A-3	1,039,386.224	D-2	1,038,714.266	G-5	1,040,232.208
A-4	1,039,368.999	D-3	1,038,562.781	G-6	1,040,425.618
A-5	1,039,326.381	D-4	1,038,863.989	G-7	1,039,944.749
A-6	1,039,345.108	D-5	1,039,875.745	G-8	1,039,685.199
A-7	1,039,327.704	D-6	1,039,724.561	G-9	1,041,726.723
A-8	1,039,331.348	D-7	1,040,028.761	G-10	1,041,366.903
A-9	1,039,330.473	D-8	1,040,128.756	RAMP B	
A-10	1,039,340.994	780E		H-1	1,039,685.199
A-11	1,039,420.313	E-1	1,039,285.265	H-2	1,039,189.224
A-12	1,039,410.836	E-2	1,039,685.199	H-3	1,039,380.472
A-13	1,039,421.324	E-3	1,039,737.048	H-4	1,039,028.451
A-14	1,039,427.653	E-4	1,039,724.148	H-5	1,038,449.182
A-15	1,039,424.947	E-5	1,039,742.575	H-6	1,038,812.611
A-16	1,039,490.844	E-6	1,039,759.605	H-7	1,038,045.921
A-17	1,039,685.199	E-7	1,039,750.989	H-8	1,036,973.211
A-18	1,039,619.182	E-8	1,039,760.525	H-9	1,037,859.363
A-19	1,039,685.199	E-9	1,039,761.873	H-10	1,037,766.084
A-20	1,039,685.199	800E		I-1	1,037,593.616
A-21	1,039,685.199	F-1	1,039,685.199	I-2	1,038,566.338
A-22	1,039,711.182	F-2	1,039,985.199	I-3	1,038,317.600
A-23	1,039,787.256	B-1	1,037,257.139	I-4	1,038,698.897
A-24	1,039,787.256	B-2	1,040,591.039	I-5	1,039,041.806
A-25	1,039,787.256	B-2	1,040,591.039	I-6	1,038,856.622

RAMP B		RAMP C		RAMP D		870E	
H-2	CURVE # H-2	H-5	CURVE # H-5	I-2	CURVE # I-2	J-2	CURVE # J-2
H-2	PI STA. = 24+95.97	H-5	PI STA. = 33+65.79	I-2	PI STA. = 40+76.14	J-2	PI STA. = 45+75.19
H-2	Δ = 32° 47' 26" (LT)	H-5	Δ = 53° 54' 59" (RT)	I-2	Δ = 35° 52' 41" (RT)	J-2	Δ = 46° 45' 51" (LT)
H-2	D = 8° 48' 53"	H-5	D = 6° 44' 26"	I-2	D = 6° 44' 26"	J-2	D = 8° 48' 53"
H-2	R = 850.00'	H-5	R = 850.00'	I-2	R = 850.00'	J-2	R = 850.00'
H-2	T = 191.25'	H-5	T = 432.34'	I-2	T = 275.18'	J-2	T = 384.43'
H-2	E = 372.00'	H-5	E = 799.87'	I-2	E = 332.26'	J-2	E = 634.32'
H-2	ℓ = 67.55'	H-5	ℓ = 103.62'	I-2	ℓ = 63.44'	J-2	ℓ = 105.17'
H-2	ℓ = 67.55'	H-5	ℓ = 103.62'	I-2	ℓ = 63.44'	J-2	ℓ = 105.17'
H-2	S.E. RUN = 180°	H-5	S.E. RUN = 200°	I-2	S.E. RUN = 200°	J-2	S.E. RUN = 180°
H-2	P.C. STA. = 23+04.73	H-5	P.C. STA. = 29+33.48	I-2	P.C. STA. = 38+00.96	J-2	P.C. STA. = 42+94.15
H-2	P.T. STA. = 26+76.73	H-5	P.T. STA. = 37+33.34	I-2	P.T. STA. = 43+33.22	J-2	P.T. STA. = 48+24.68

780E/P.E.	
E-3	CURVE # E-3
E-3	PI STA. = 10+51.85
E-3	Δ = 65° 39' 04" (LT)
E-3	D = 286° 28' 44"
E-3	R = 20.00'
E-3	T = 12.90'
E-3	E = 24.82'
E-3	ℓ = 2.00'
E-3	ℓ = 2.00'
E-3	S.E. RUN = N/A
E-3	P.C. STA. = 10+38.95
E-3	P.T. STA. = 10+61.87
E-6	CURVE # E-6
E-6	PI STA. = 11+01.62
E-6	Δ = 22° 44' 42" (LT)
E-6	D = 57° 17' 45"
E-6	R = 100.00'
E-6	T = 20.11'
E-6	E = 39.10'
E-6	ℓ = 2.00'
E-6	ℓ = 2.00'
E-6	S.E. RUN = N/A
E-6	P.C. STA. = 10+81.51
E-6	P.T. STA. = 11+21.21



700E	
D-2	CURVE # D-2
D-2	PI STA. = 62+51.54
D-2	Δ = 10° 29' 43" (LT)
D-2	D = 3° 28' 21"
D-2	R = 1,650.00'
D-2	T = 151.54'
D-2	E = 302.24'
D-2	ℓ = 66.94'
D-2	ℓ = 66.94'
D-2	S.E. RUN = 150°
D-2	P.C. STA. = 61+00.00
D-2	P.T. STA. = 64+02.24
D-3	CURVE # D-3
D-3	PI STA. = 74+26.31
D-3	Δ = 9° 27' 25" (RT)
D-3	D = 3° 05' 43"
D-3	R = 1,850.00'
D-3	T = 153.02'
D-3	E = 305.35'
D-3	ℓ = 6.32'
D-3	ℓ = 6.32'
D-3	S.E. RUN = 65°
D-3	P.C. STA. = 72+73.28
D-3	P.T. STA. = 75+78.64

EXISTING I-57		
X-1	1,036,837.259	988,998.598
X-2	1,039,048.185	989,904.096
X-3	1,038,028.355	989,486.418
X-4	1,040,150.190	989,913.652
X-5	1,042,583.580	989,934.754

REVISIONS	
NAME	DATE

ILLINOIS DEPARTMENT OF TRANSPORTATION  
 CENTERLINE GEOMETRICS  
 FAS 642  
 SEC NO. 99-00124-03-PV  
 COLES COUNTY, ILLINOIS

SCALE: HORIZ. - 1"=300'  
 DATE 03/30/2009  
 DRAWN BY DJP  
 CHECKED BY SKM

© Copyright Hanson Professional Services Inc. 2009



LAYOUT	DUP	12/26/03
DRAWN	DJP	12/26/03
REVIEWED	SKM	01/05/04