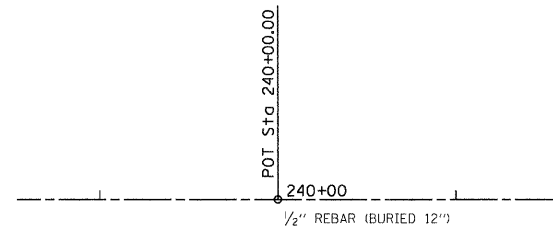
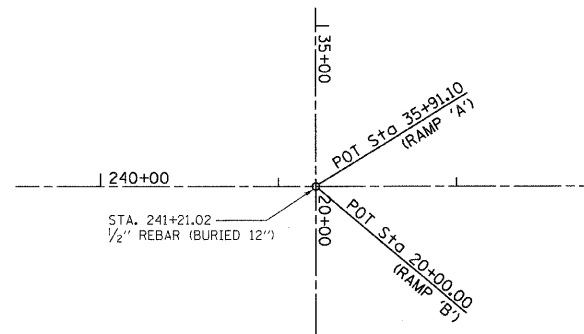


F.A.S. RITE	SECTION	COUNTY	TOTAL SHEETS	SHEET NO.
642	99-00124-03-PV	COLES	97	14
STA.		TO STA.		
FED. ROAD DIST. NO.		ILLINOIS FED. AID PROJECT		

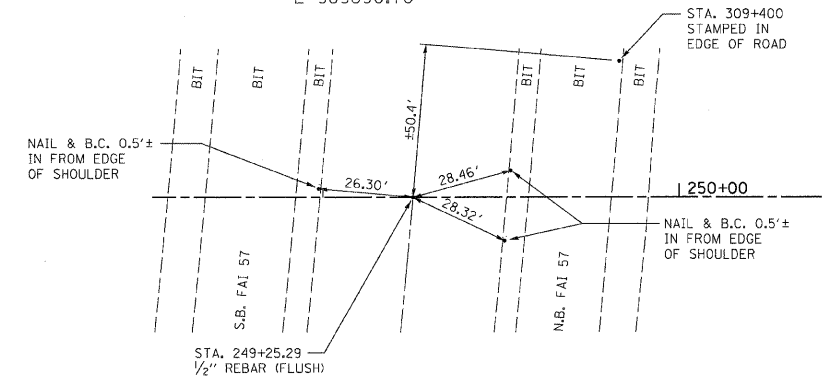
P.O.T.  
C.H. 18 STA.240+00.00  
(NO CROSS TIES AVAILABLE)  
N 1039685.20  
E 988965.42



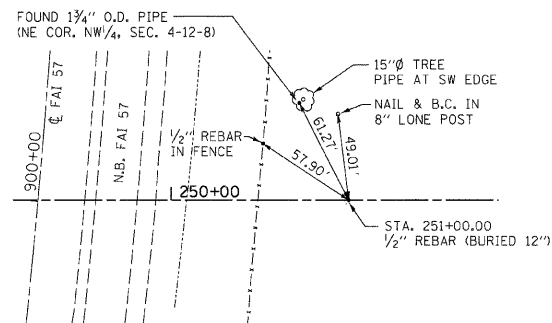
P.O.T. (C-C)  
C.H. 18 STA.241+21.02  
(NO CROSS TIES AVAILABLE)  
N 1039685.20  
E 989086.43



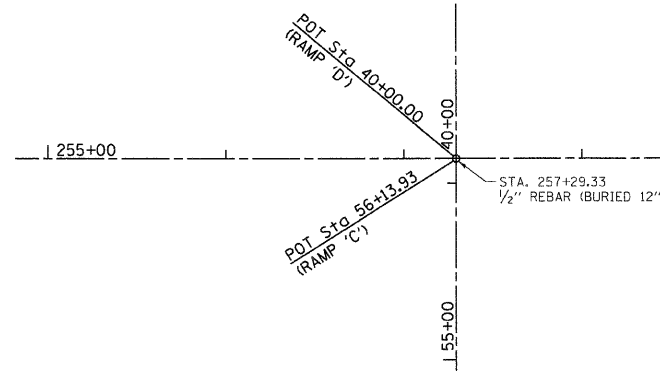
P.O.T. (C-C)  
C.H. 18 STA.249+25.29  
N 1039685.20  
E 989890.70



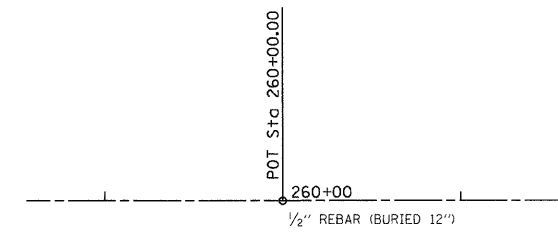
P.O.T.  
C.H. 18 STA.251+00.00  
N 1039685.20  
E 990065.42



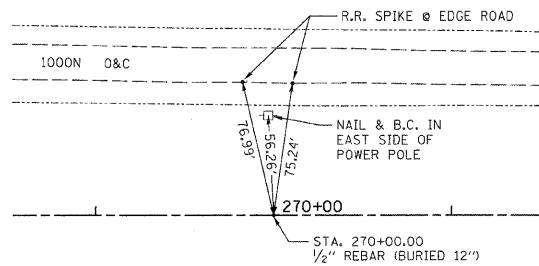
P.O.T. (C-C)  
C.H. 18 STA.257+29.33  
(NO CROSS TIES AVAILABLE)  
N 1039685.20  
E 990694.75



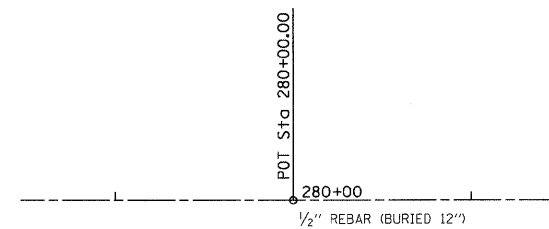
P.O.T.  
C.H. 18 STA.260+00.00  
(NO CROSS TIES AVAILABLE)  
N 1039685.20  
E 990965.42



P.O.T.  
C.H. 18 STA.270+00.00  
N 1039685.20  
E 991965.42



P.O.T.  
C.H. 18 STA.280+00.00  
(NO CROSS TIES AVAILABLE)  
N 1039685.20  
E 992965.42



REVISIONS	
NAME	DATE

ILLINOIS DEPARTMENT OF TRANSPORTATION  
**SURVEY TIES**  
FAS 642  
SEC NO. 99-00124-03-PV  
COLES COUNTY, ILLINOIS  
SCALE: VERT. N.T.S. HORIZ. N.T.S.  
DATE 03/30/2009  
DRAWN BY CAI  
CHECKED BY MED

TUG PROJ. #19197022-5  
#FILE ABBREV#