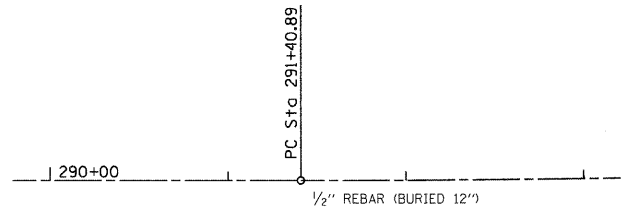
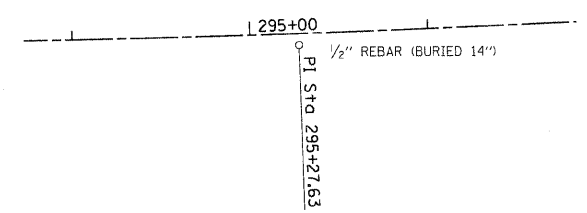


F.A.S. RTE.	SECTION	COUNTY	TOTAL SHEETS	SHEET NO.
642	99-00124-03-PV	COLES	97	15
STA.		TO STA.		
FED. ROAD DIST. NO.		ILLINOIS FED. AID PROJECT		

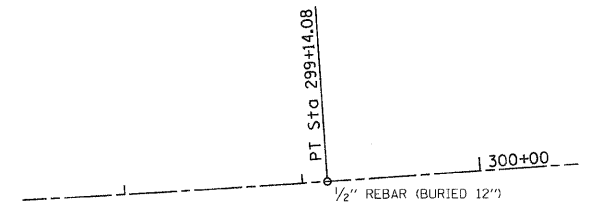
P.C.
C.H. 18 STA.291+40.89
(NO CROSS TIES AVAILABLE)
N 1039685.20
E 994106.30



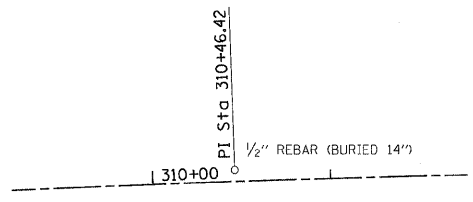
P.I.
C.H. 18 STA.295+27.63
(NO CROSS TIES AVAILABLE)
N 1039685.20
E 994493.04



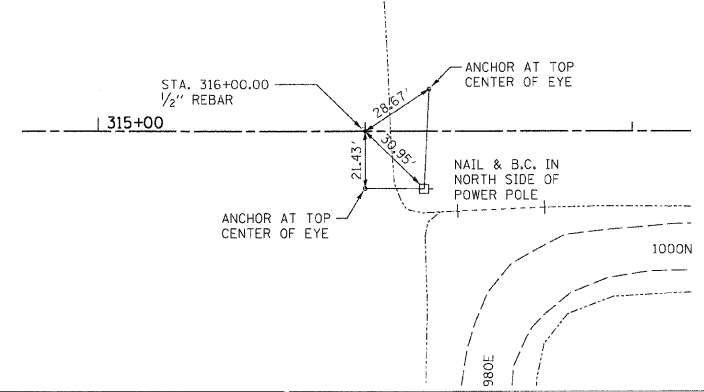
P.T.
C.H. 18 STA.299+14.08
(NO CROSS TIES AVAILABLE)
N 1039711.18
E 994878.91



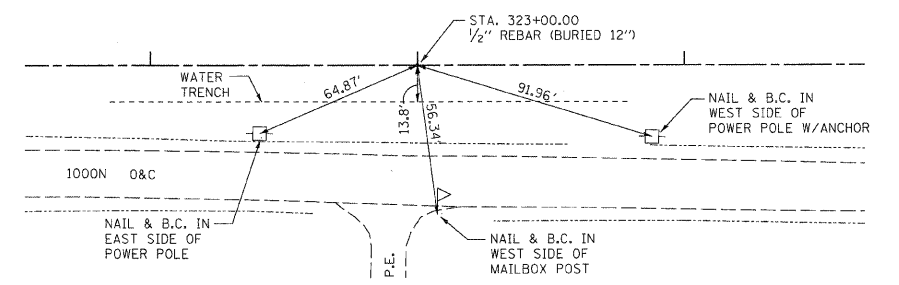
P.I.
C.H. 18 STA.310+46.42
(NO CROSS TIES AVAILABLE)
N 1039787.26
E 996008.69



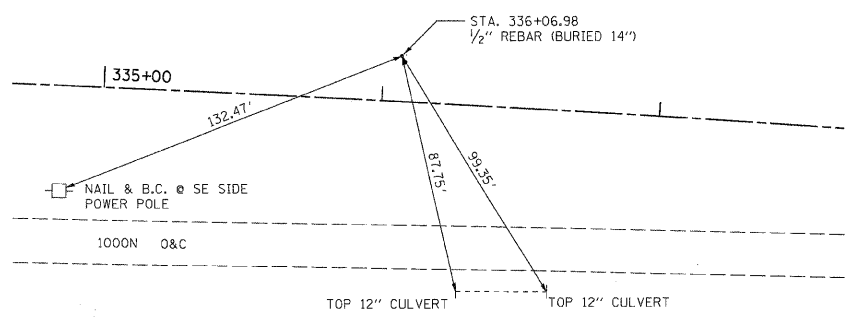
P.O.T.
C.H. 18 STA.316+00.00
N 1039787.26
E 996562.57



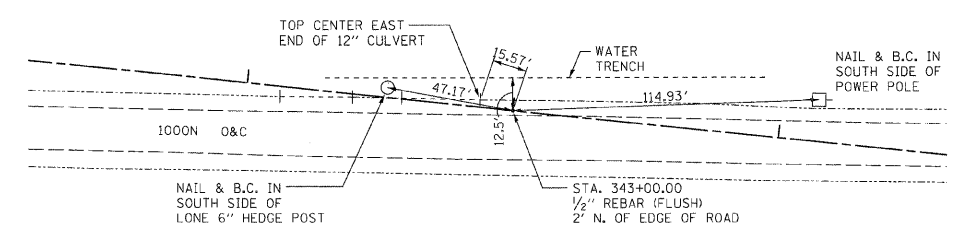
P.O.T.
C.H. 18 STA.323+00.00
N 1039787.26
E 997262.57



P.I.
C.H. 18 STA.336+06.98
N 1039787.26
E 998569.55



P.O.T.
C.H. 18 STA.343+00.00
N 1039713.58
E 999259.80



REVISIONS	
NAME	DATE

ILLINOIS DEPARTMENT OF TRANSPORTATION

SURVEY TIES
FAS 642
SEC NO. 99-00124-03-PV
COLES COUNTY, ILLINOIS

SCALE: VERT. N.T.S. HORIZ. N.T.S.
DATE 03/30/2009
DRAWN BY CAI
CHECKED BY MED

TUG PROJ. #1917022-5
9/15/09/022-5