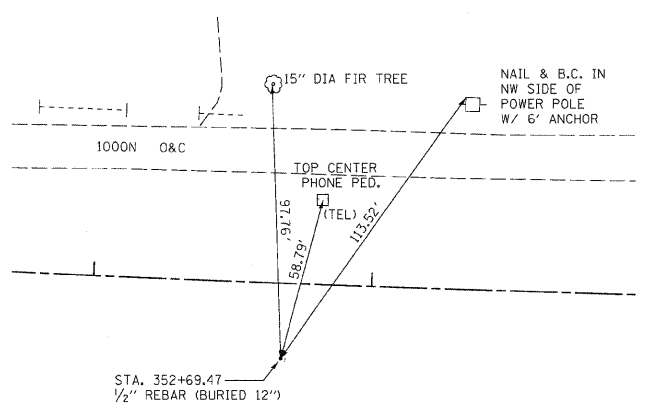
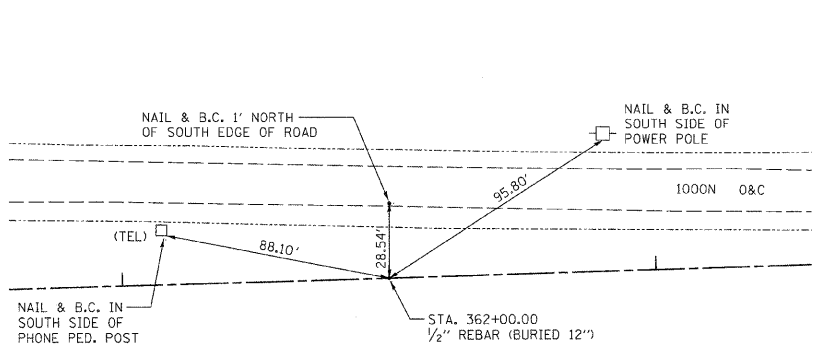


F.A.S. RTE.	SECTION	COUNTY	TOTAL SHEETS	SHEET NO.
642	99-00124-03-PV	COLES	97	16
STA.		TO STA.		
FED. ROAD DIST. NO.		ILLINOIS	FED. AID PROJECT	

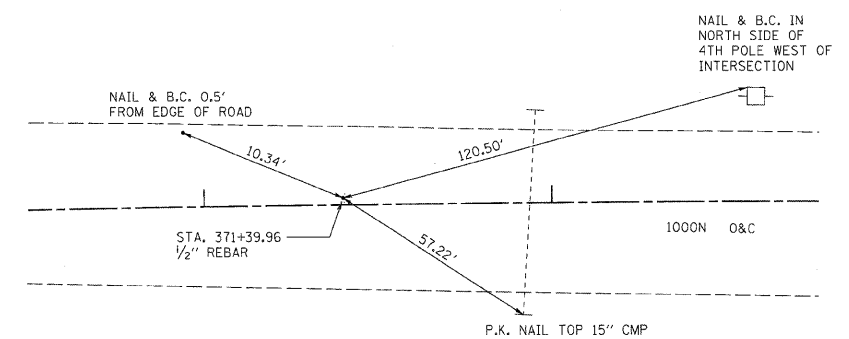
P.I.
C.H. 18 STA.352+69.47
N 1039610.69
E 1000223.79



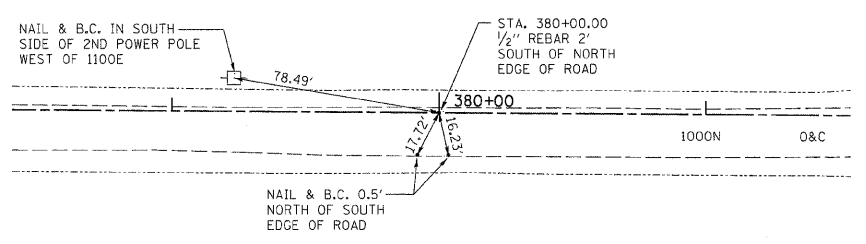
P.O.T.
C.H. 18 STA.362+00.00
N 1039638.92
E 1001156.34



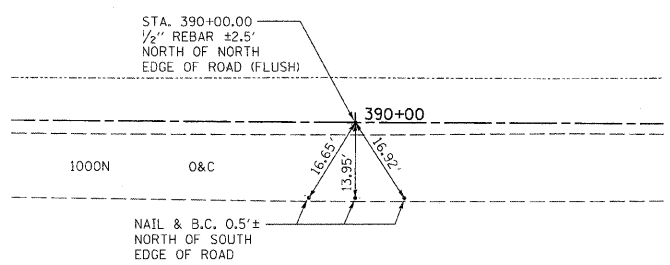
P.I.
C.H. 18 STA.371+39.96
N 1039667.37
E 1002095.88



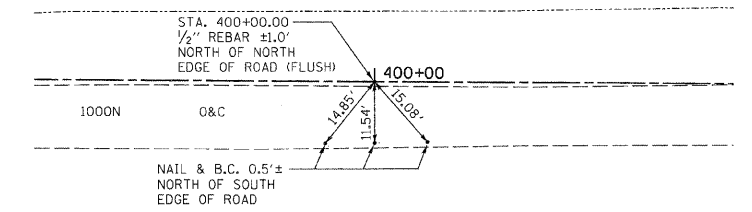
P.O.T.
C.H. 18 STA.380+00.00
N 1039661.31
E 1002955.94



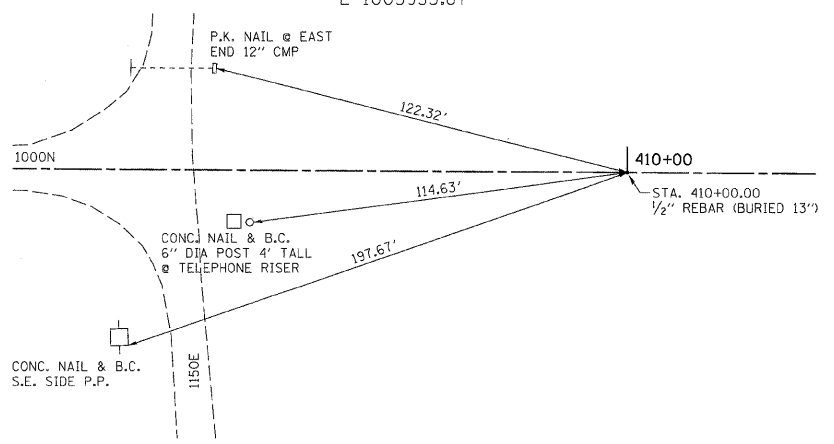
P.O.T.
C.H. 18 STA.390+00.00
N 1039654.28
E 1003955.91



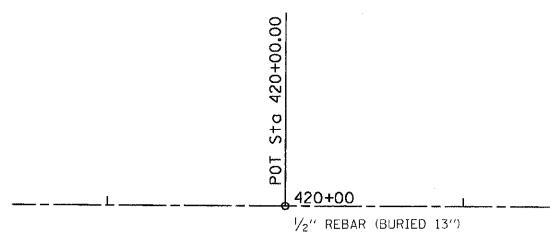
P.O.T.
C.H. 18 STA.400+00.00
N 1039647.24
E 1004955.89



P.O.T.
C.H. 18 STA.410+00.00
N 1039640.20
E 1005955.87



P.O.T.
C.H. 18 STA.420+00.00
(NO CROSS TIES AVAILABLE)
N 1039633.16
E 1006955.84



REVISIONS	
NAME	DATE

ILLINOIS DEPARTMENT OF TRANSPORTATION
SURVEY TIES
FAS 642
SEC NO. 99-00124-03-PV
COLES COUNTY, ILLINOIS
SCALE: VERT. N.T.S. HORIZ. N.T.S.
DATE 03/30/2009 DRAWN BY MED CHECKED BY MED

TUG PROJ. #1397022-5
BELLEABBREVB