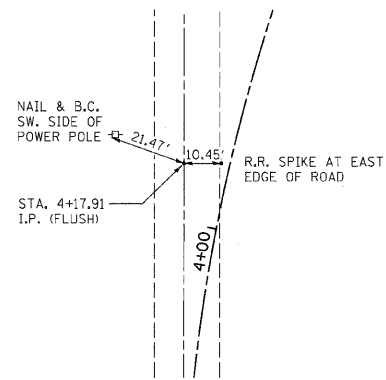
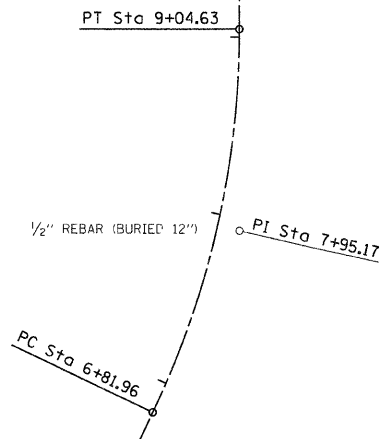


F.A.S. RTE.	SECTION	COUNTY	TOTAL SHEETS	SHEET NO.
642	99-00124-03-PV	COLES	97	17
STA. TO STA.		FED. ROAD DIST. NO. ILLINOIS FED. AID PROJECT		

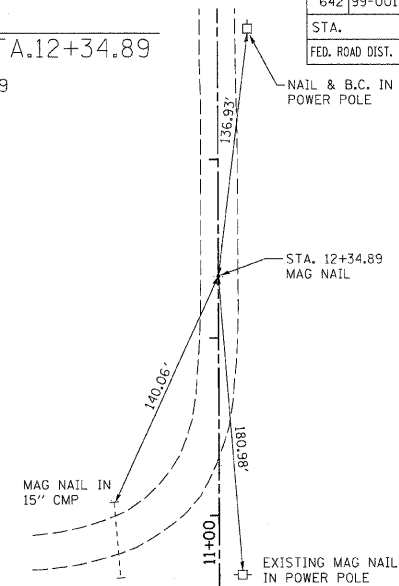
P.I.  
CO. RD. 870E STA.4+17.91  
N 1039132.77  
E 991351.28



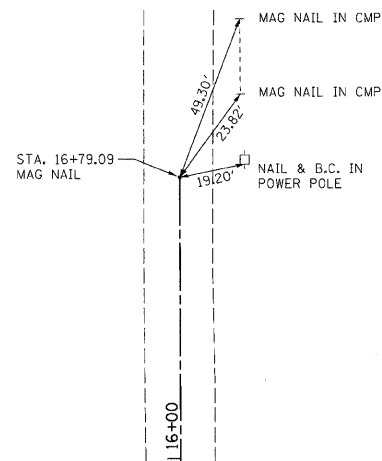
P.I.  
CO. RD. 870E STA.7+95.17  
(NO CROSS TIES AVAILABLE)  
N 1039476.61  
E 991515.41



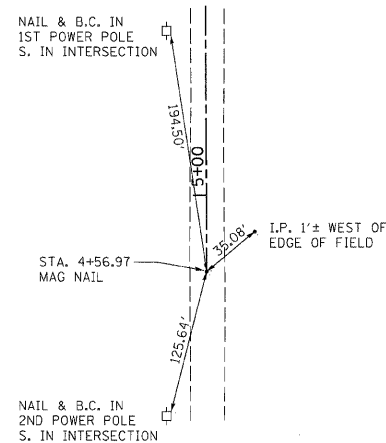
P.O.T.  
CO. RD. 900E STA.12+34.89  
N 1039920.09  
E 992584.19



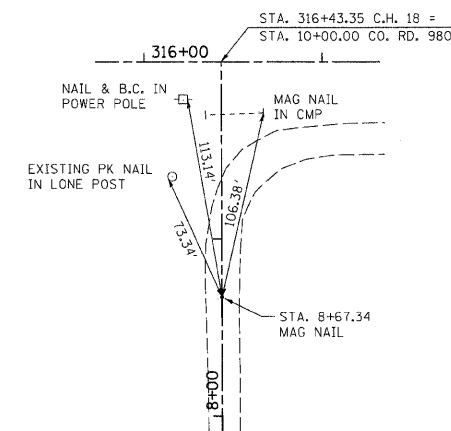
P.O.T.  
CO. RD. 900E STA.16+79.09  
N 1040364.29  
E 992582.74



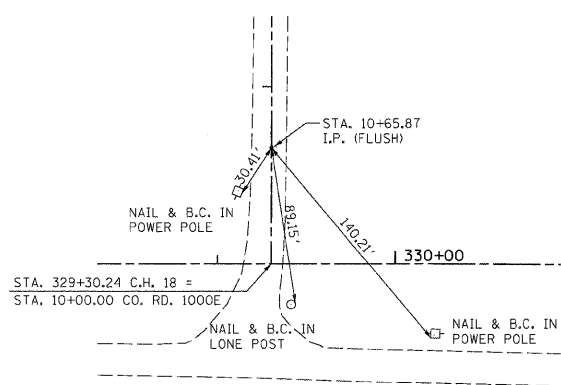
P.O.T.  
CO. RD. 980E STA.4+56.97  
N 1039244.23  
E 996608.01



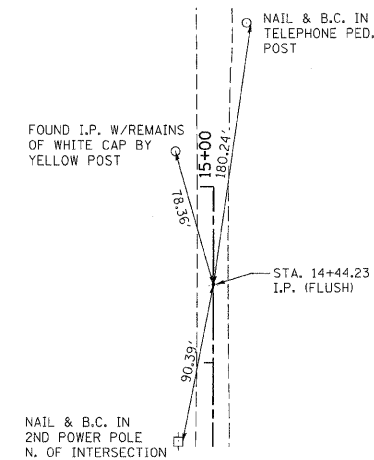
P.O.T.  
CO. RD. 980E STA.8+67.34  
N 1039654.60  
E 996606.43



P.O.T.  
CO. RD. 1000E STA.10+65.87  
N 1039853.13  
E 997893.02



P.O.T.  
CO. RD. 1000E STA.14+44.23  
N 1040231.48  
E 997894.25



REVISIONS	
NAME	DATE

ILLINOIS DEPARTMENT OF TRANSPORTATION  
**SURVEY TIES**  
FAS 642  
SEC NO. 99-00124-03-PV  
COLES COUNTY, ILLINOIS  
SCALE: VERT. N.T.S. DRAWN BY  
HORIZ. N.T.S. CHECKED BY MED  
DATE 03/30/2009

TUG PROJ. #1997022-5  
#LEABBREVS