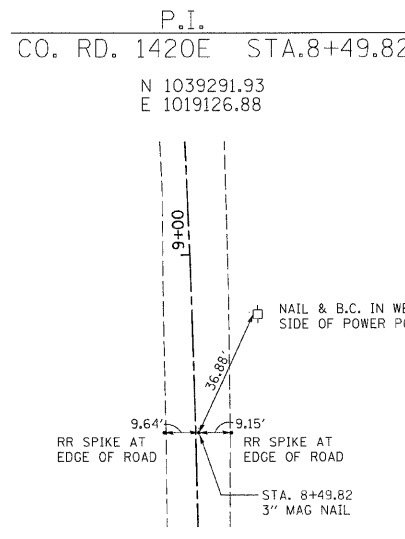
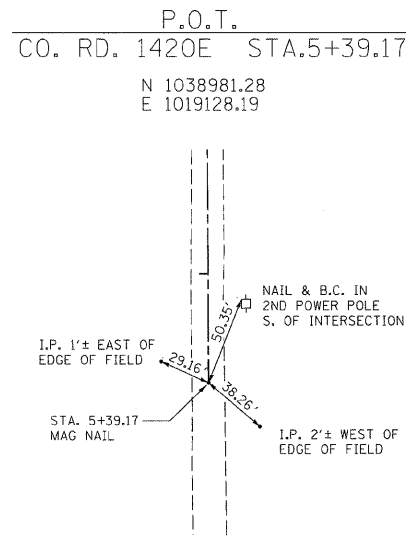
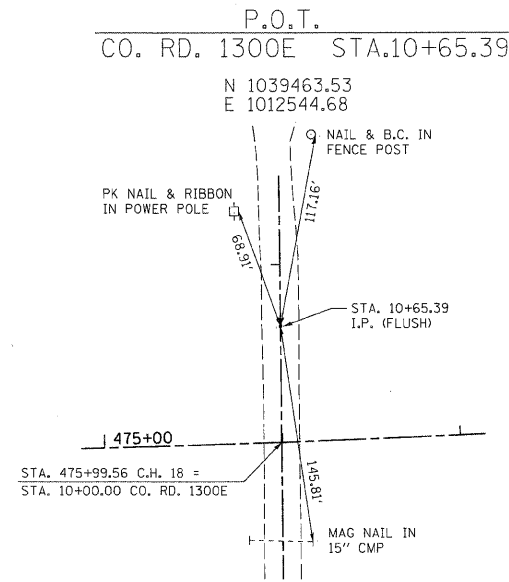
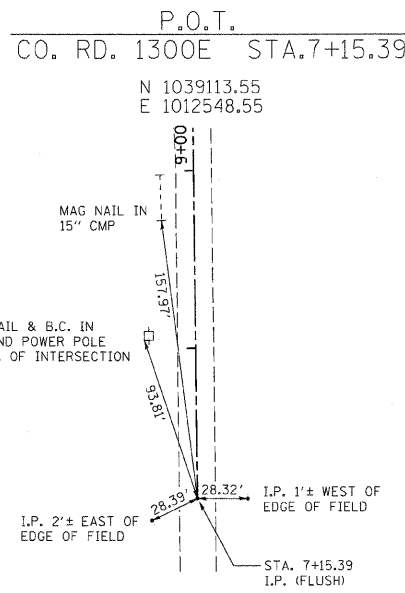
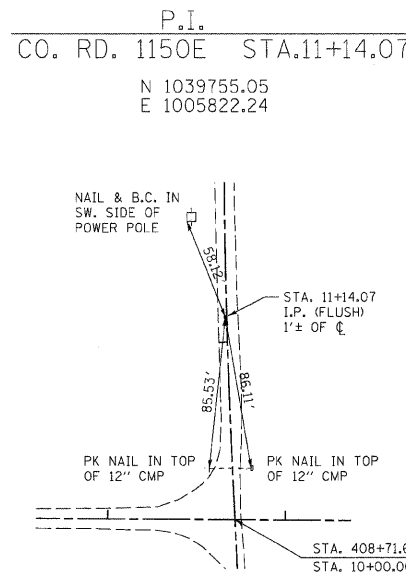
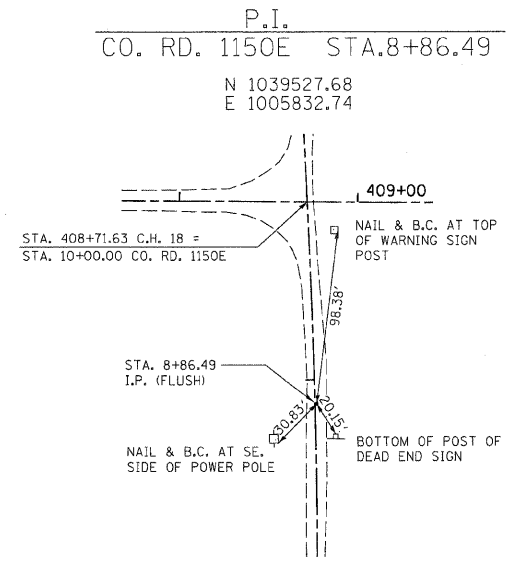
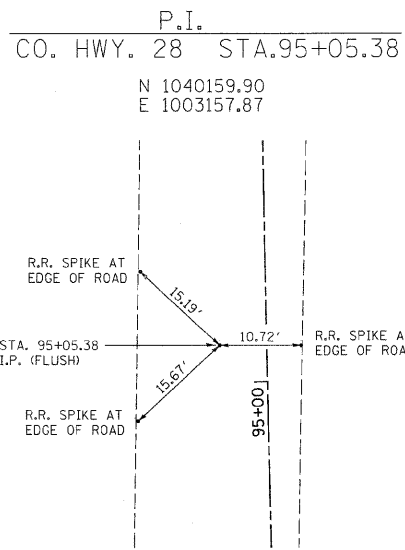
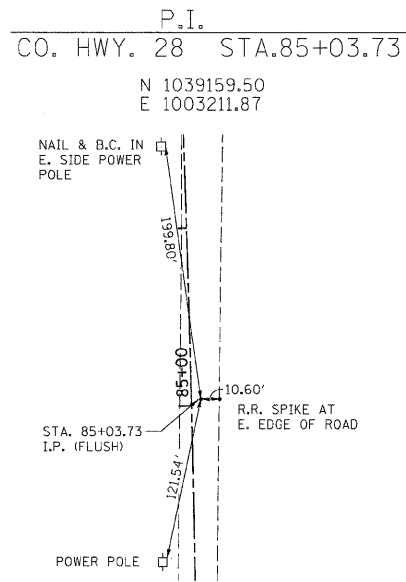


F.A.S. RTE.	SECTION	COUNTY	TOTAL SHEETS	SHEET NO.
642	99-00124-03-PV	COLES	97	18
STA.		TO STA.		
FED. ROAD DIST. NO.		ILLINOIS	FED. AID PROJECT	



REVISIONS	
NAME	DATE

ILLINOIS DEPARTMENT OF TRANSPORTATION  
**SURVEY TIES**  
FAS 642  
SEC NO. 99-00124-03-PV  
COLES COUNTY, ILLINOIS  
SCALE: VERT. N.T.S. HORIZ. N.T.S.  
DATE 03/30/2009 DRAWN BY  
CHECKED BY MED

TUC PROJ. #1397022-5  
FILE#BBRE18