

F.A.S. RTE.	SECTION	COUNTY	TOTAL SHEETS	SHEET NO.
642	99-00124-03-PV	COLES	97	23
STA. 326+00.00		TO STA. 342+00.00		
FED. ROAD DIST. NO.		ILLINOIS FED. AID PROJECT		

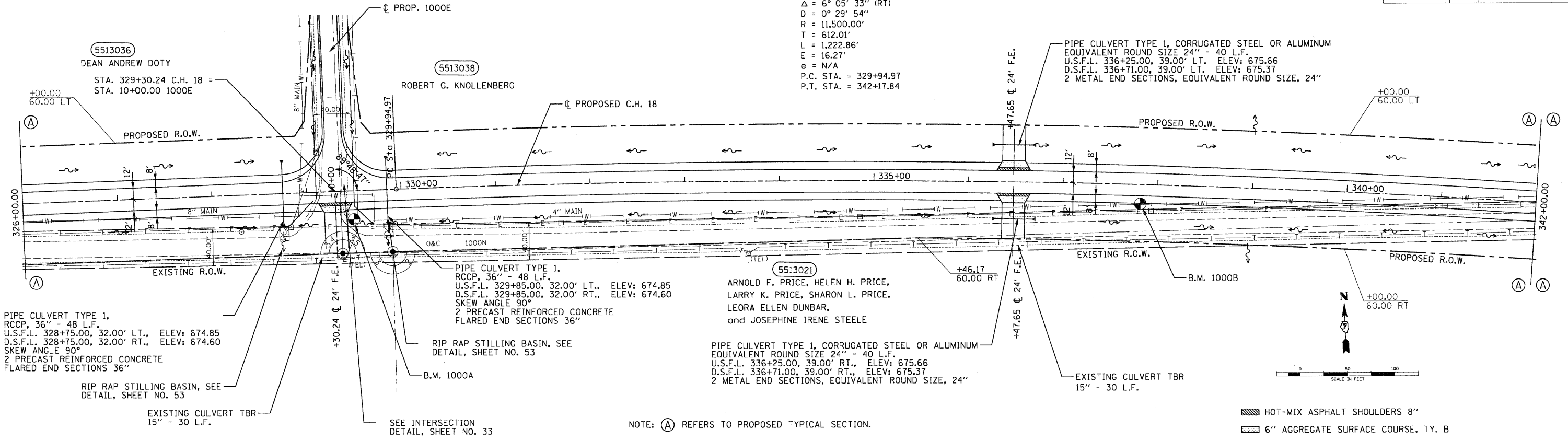
PROP. CURVE CURV9  
 PI STA. = 336+06.98  
 $\Delta = 6^{\circ} 05' 33''$  (RT)  
 $D = 0^{\circ} 29' 54''$   
 $R = 11,500.00'$   
 $T = 612.01'$   
 $L = 1,222.86'$   
 $E = 16.27'$   
 $e = N/A$   
 P.C. STA. = 329+94.97  
 P.T. STA. = 342+17.84

PIPE CULVERT TYPE 1, CORRUGATED STEEL OR ALUMINUM  
 EQUIVALENT ROUND SIZE 24" - 40 L.F.  
 U.S.F.L. 336+25.00, 39.00' LT. ELEV: 675.66  
 D.S.F.L. 336+71.00, 39.00' LT. ELEV: 675.37  
 2 METAL END SECTIONS, EQUIVALENT ROUND SIZE, 24"

PIPE CULVERT TYPE 1,  
 RCCP, 36" - 48 L.F.  
 U.S.F.L. 329+85.00, 32.00' LT., ELEV: 674.85  
 D.S.F.L. 329+85.00, 32.00' RT., ELEV: 674.60  
 SKEW ANGLE 90°  
 2 PRECAST REINFORCED CONCRETE  
 FLARED END SECTIONS 36"

PIPE CULVERT TYPE 1, CORRUGATED STEEL OR ALUMINUM  
 EQUIVALENT ROUND SIZE 24" - 40 L.F.  
 U.S.F.L. 336+25.00, 39.00' RT., ELEV: 675.66  
 D.S.F.L. 336+71.00, 39.00' RT., ELEV: 675.37  
 2 METAL END SECTIONS, EQUIVALENT ROUND SIZE, 24"

EXISTING CULVERT TBR  
 15" - 30 L.F.

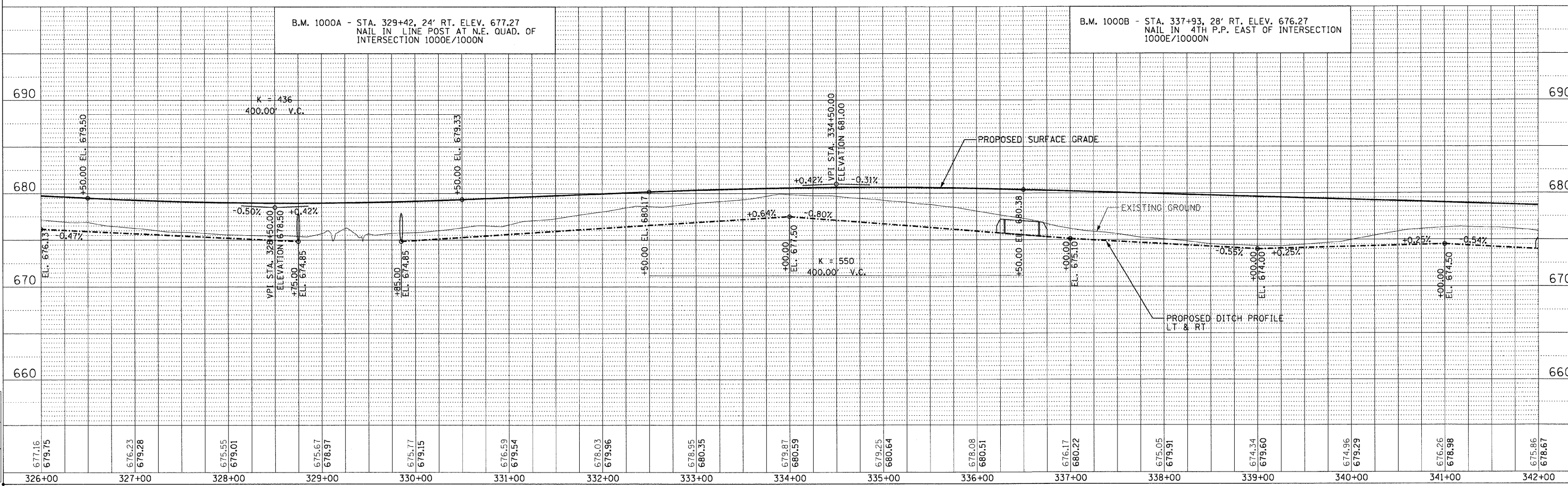


NOTE: (A) REFERS TO PROPOSED TYPICAL SECTION.

HOT-MIX ASPHALT SHOULDERS 8"  
 6" AGGREGATE SURFACE COURSE, TY. B

B.M. 1000A - STA. 329+42, 24' RT. ELEV. 677.27  
 NAIL IN LINE POST AT N.E. QUAD. OF  
 INTERSECTION 1000E/1000N

B.M. 1000B - STA. 337+93, 28' RT. ELEV. 676.27  
 NAIL IN 4TH P.P. EAST OF INTERSECTION  
 1000E/1000N



DATE	BY

PLANNING  
 SURVEYED  
 ALIGNED  
 CHECKED  
 PLAN  
 NOTE BOOK  
 NO. OF MAY CHECKED  
 NO. OF FILE NAME

DATE	BY

DATE	BY

LAYOUT	DATE