

F.A.S. RTE.	SECTION	COUNTY	TOTAL SHEETS	SHEET NO.
642	99-00124-03-PV	COLES	97	24
STA. 342+00.00 TO STA. 358+00.00				
FED. ROAD DIST. NO. ILLINOIS FED. AID PROJECT				

- HOT-MIX ASPHALT SHOULDERS 8"
- 6" AGGREGATE SURFACE COURSE, TY. B
- INCIDENTAL HOT-MIX ASPHALT SURFACING 3"

PIPE CULVERT TYPE 1, CORRUGATED STEEL OR ALUMINUM EQUIVALENT ROUND SIZE, 24" - 46 L.F.
 U.S.F.L. 342+02.33, 38.00' LT., ELEV: 673.94
 D.S.F.L. 342+52.60, 38.00' LT., ELEV: 673.70
 2 METAL END SECTIONS, EQUIVALENT ROUND SIZE 24"

5513040
 LARRY K. PRICE and SHARON LEE PRICE

PIPE CULVERT TYPE 1, CORRUGATED STEEL OR ALUMINUM EQUIVALENT ROUND SIZE, 24" - 40 L.F.
 U.S.F.L. 352+22.73, 41.00' LT., ELEV. 672.75
 D.S.F.L. 351+77.27, 42.00' LT., ELEV. 672.17
 2 METAL END SECTIONS, EQUIVALENT ROUND SIZE 24"

RIPRAP STILLING BASIN, SEE DETAIL SHEET NO. 53

EXISTING CULVERT TBR 24" CMP - 25 L.F.

EXISTING CULVERT TBR 15" - 30 L.F.

EXISTING CULVERT TBR 12" - 17 L.F.

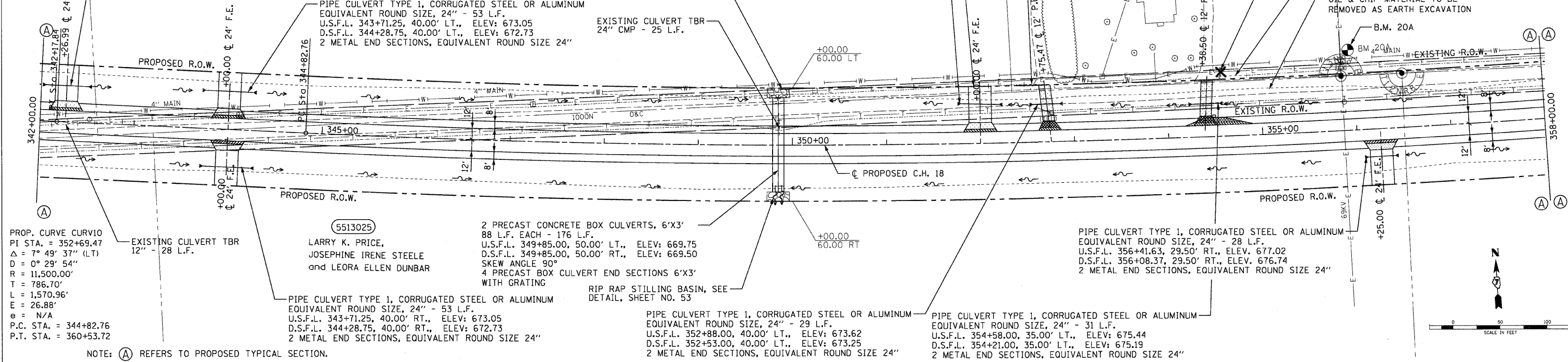
MAILBOX TO BE REMOVED AND RELOCATED

EXISTING CULVERT TBR 12" - 32 L.F.

OIL & CHIP MATERIAL TO BE REMOVED AS EARTH EXCAVATION

B.M. 20A

EXISTING R.O.W.



PROP. CURVE CURV10
 PI STA. = 352+69.47
 $\Delta = 7^\circ 49' 37''$ (LT)
 $D = 0^\circ 29' 54''$
 $R = 11,500.00'$
 $T = 786.70'$
 $L = 1,570.96'$
 $E = 26.88'$
 $\epsilon = N/A$
 P.C. STA. = 344+82.76
 P.T. STA. = 360+53.72

5513025
 LARRY K. PRICE, JOSEPHINE IRENE STEELE and LEORA ELLEN DUNBAR

2 PRECAST CONCRETE BOX CULVERTS, 6'X3' 88 L.F. EACH - 176 L.F.
 U.S.F.L. 349+85.00, 50.00' LT., ELEV: 669.75
 D.S.F.L. 349+85.00, 50.00' RT., ELEV: 669.50
 SKEW ANGLE 90°
 4 PRECAST BOX CULVERT END SECTIONS 6'X3' WITH GRATING

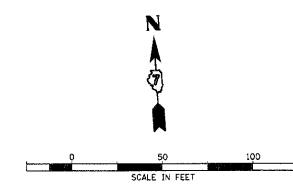
RIP RAP STILLING BASIN, SEE DETAIL, SHEET NO. 53

PIPE CULVERT TYPE 1, CORRUGATED STEEL OR ALUMINUM EQUIVALENT ROUND SIZE, 24" - 29 L.F.
 U.S.F.L. 352+88.00, 40.00' LT., ELEV: 673.62
 D.S.F.L. 352+53.00, 40.00' LT., ELEV: 673.25
 2 METAL END SECTIONS, EQUIVALENT ROUND SIZE 24"

PIPE CULVERT TYPE 1, CORRUGATED STEEL OR ALUMINUM EQUIVALENT ROUND SIZE, 24" - 31 L.F.
 U.S.F.L. 354+58.00, 35.00' LT., ELEV: 675.44
 D.S.F.L. 354+21.00, 35.00' LT., ELEV: 675.19
 2 METAL END SECTIONS, EQUIVALENT ROUND SIZE 24"

PIPE CULVERT TYPE 1, CORRUGATED STEEL OR ALUMINUM EQUIVALENT ROUND SIZE, 24" - 28 L.F.
 U.S.F.L. 356+41.63, 29.50' RT., ELEV. 677.02
 D.S.F.L. 356+08.37, 29.50' RT., ELEV. 676.74
 2 METAL END SECTIONS, EQUIVALENT ROUND SIZE 24"

NOTE: (A) REFERS TO PROPOSED TYPICAL SECTION.



DATE	BY	DESCRIPTION



DATE	BY	DESCRIPTION

DATE	BY	DESCRIPTION

