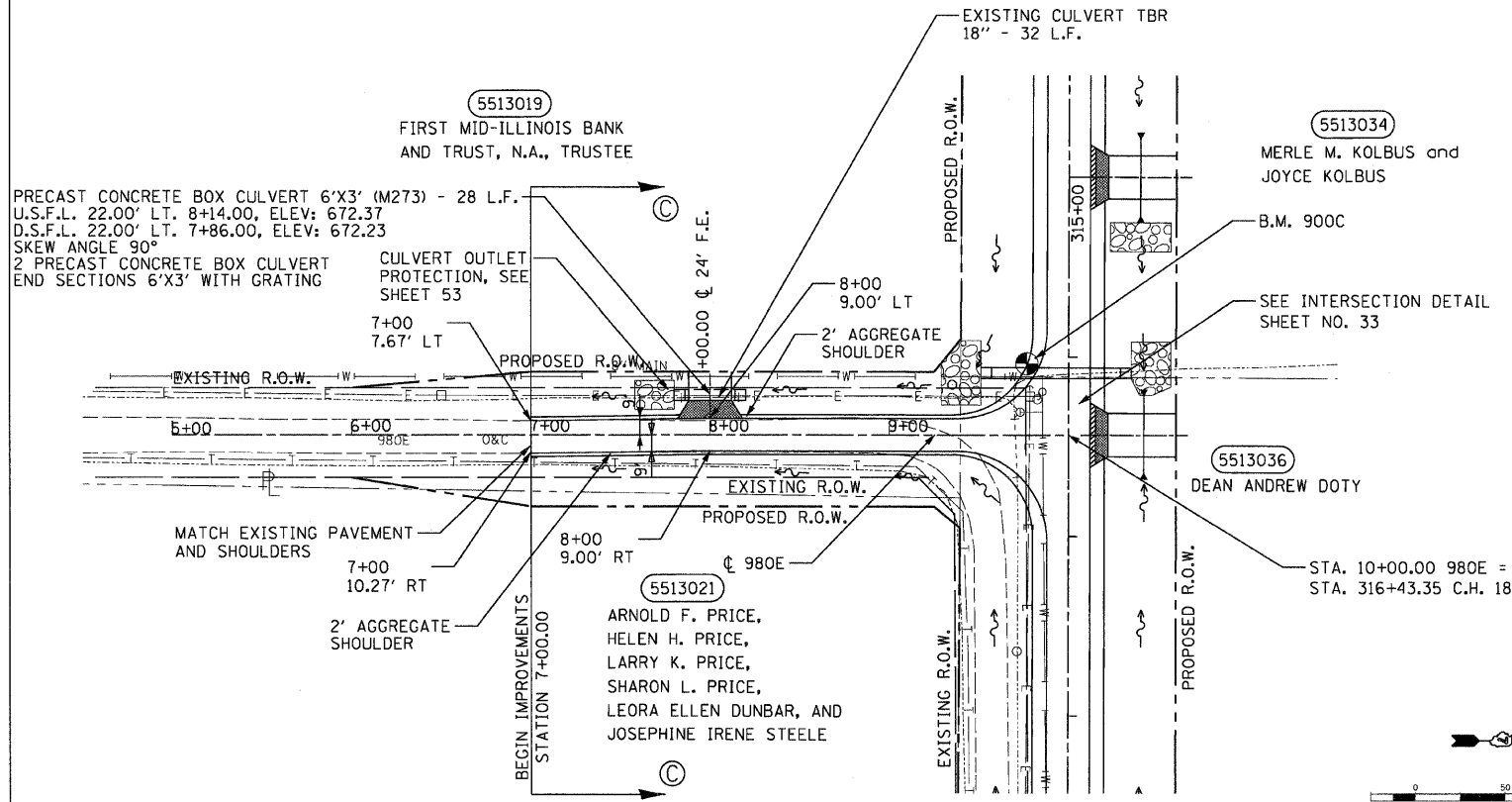
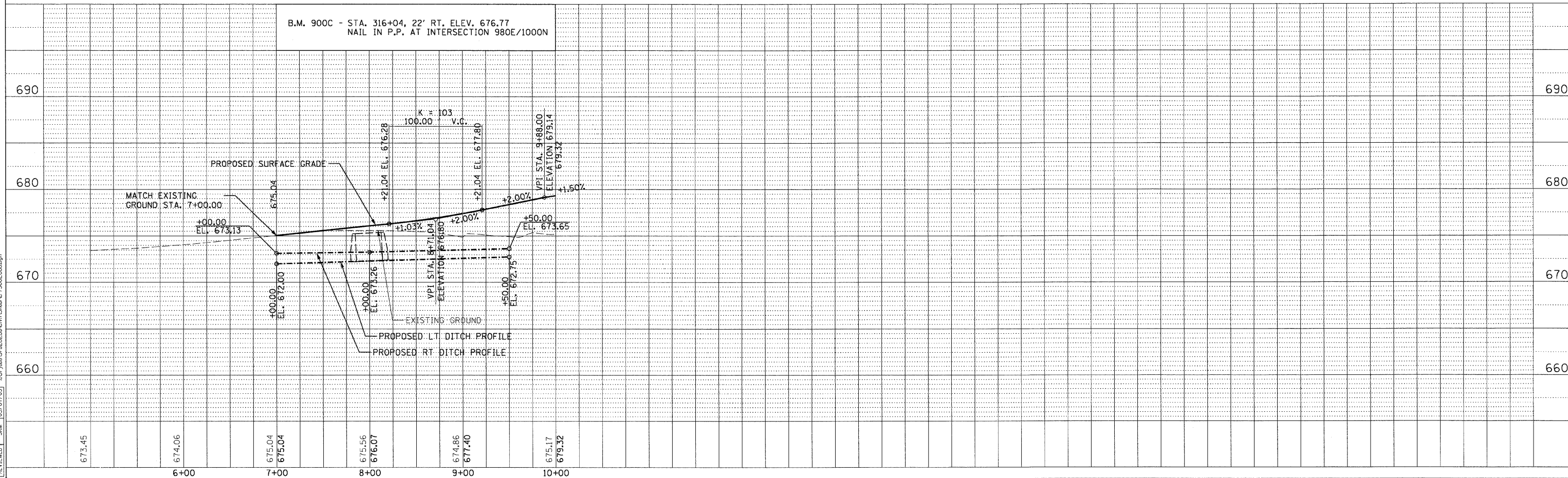


F.A.S. RTE.	SECTION	COUNTY	TOTAL SHEETS	SHEET NO.
642	99-00124-03-PV	COLES	97	29
STA. 7+00.00		TO STA. 10+00.00		
FED. ROAD DIST. NO.		ILLINOIS FED. AID PROJECT		



NOTE: (C) REFERS TO PROPOSED TYPICAL SECTION.

6" AGGREGATE SURFACE COURSE, TY. B



CO. RD. 980E STA. 7+00.00 TO STA. 10+00.00

DATE	BY	REVISION

SURVEYED: \_\_\_\_\_  
 ALIGNED: \_\_\_\_\_  
 CHECKED: \_\_\_\_\_  
 PLAN: \_\_\_\_\_  
 NOTE BOOK: \_\_\_\_\_  
 NO. \_\_\_\_\_

DATE	BY	REVISION

DATE	BY	REVISION

LAYOUT	DIP/SKM	DATE

673.45  
 674.06  
 675.04  
 675.04  
 675.56  
 676.07  
 674.86  
 677.40  
 675.17  
 679.32