

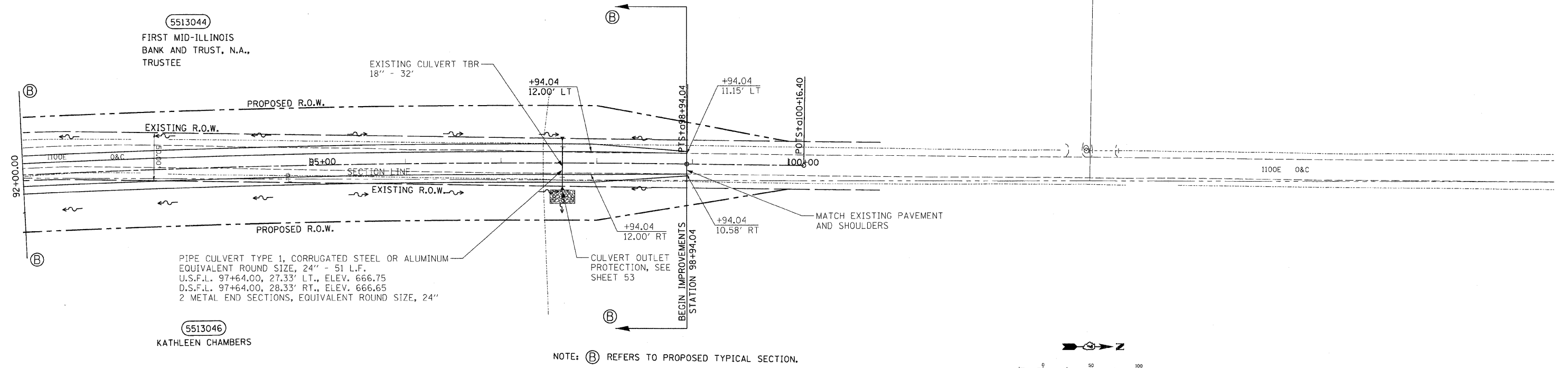
F.A.S. RTE.	SECTION	COUNTY	TOTAL SHEETS	SHEET NO.
642	99-00124-03-PV	COLES	97	32
STA. 92+00.00		TO STA. 98+94.04		
FED. ROAD DIST. NO.	ILLINOIS	FED. AID PROJECT		

DATE	BY
DATE	BY

DATE	BY
DATE	BY

DATE	BY
DATE	BY

DATE	BY
DATE	BY



5513044  
FIRST MID-ILLINOIS BANK AND TRUST, N.A., TRUSTEE

5513046  
KATHLEEN CHAMBERS

PIPE CULVERT TYPE 1, CORRUGATED STEEL OR ALUMINUM EQUIVALENT ROUND SIZE, 24" - 51 L.F.  
U.S.F.L. 97+64.00, 27.33' LT., ELEV. 666.75  
D.S.F.L. 97+64.00, 28.33' RT., ELEV. 666.65  
2 METAL END SECTIONS, EQUIVALENT ROUND SIZE, 24"

NOTE: (B) REFERS TO PROPOSED TYPICAL SECTION.

