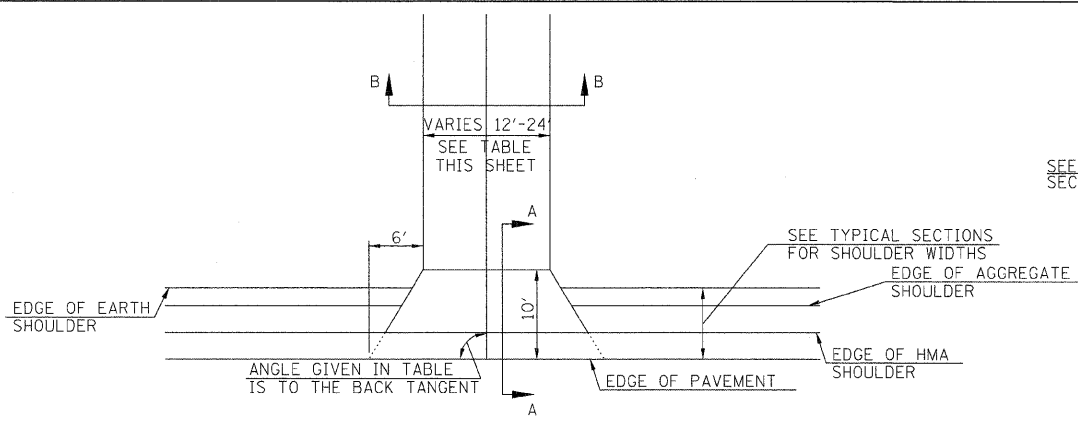
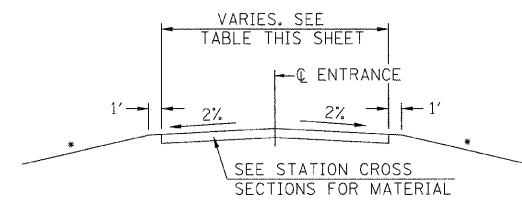


F.A.S. RTE.	SECTION	COUNTY	TOTAL SHEETS	SHEET NO.
642	99-00124-03-PV	COLES	97	49
STA.		TO STA.		
FED. ROAD DIST. NO.		ILLINOIS FED. AID PROJECT		

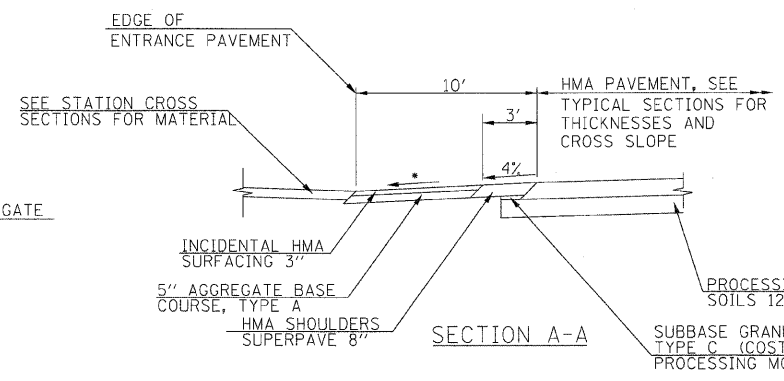


TYPICAL PRIVATE ENTRANCE DETAIL



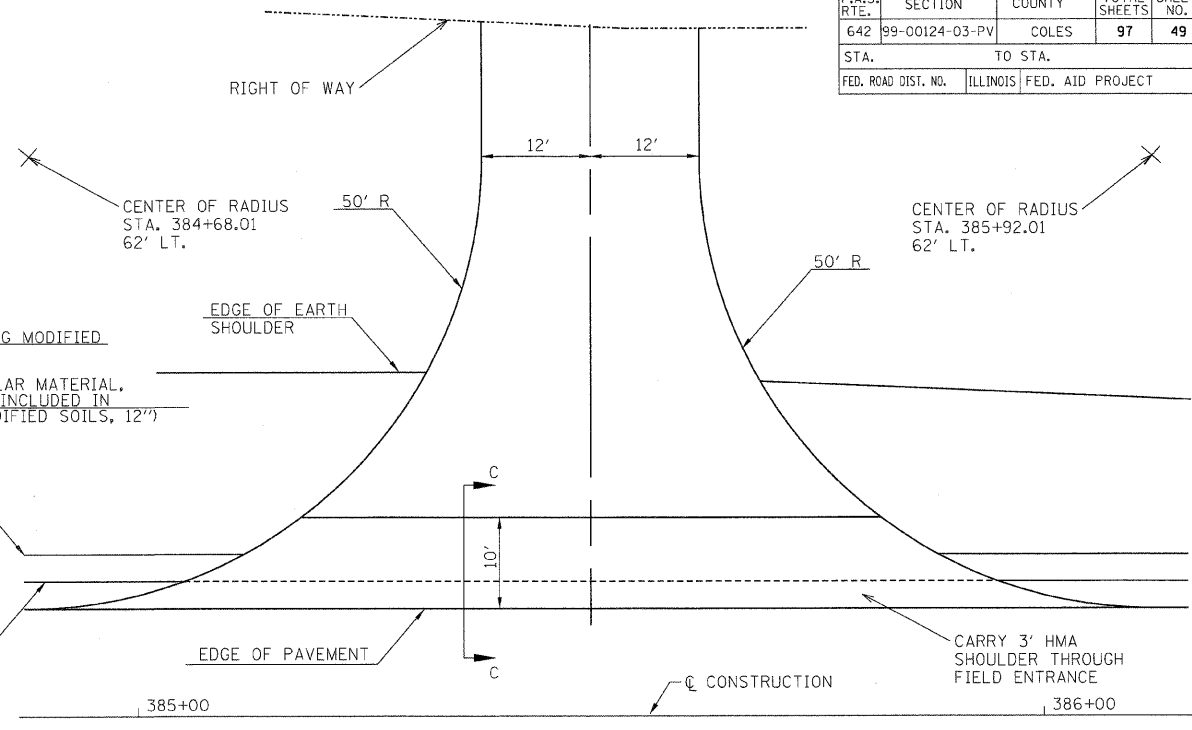
SECTION B-B

• 6:1 MIN. SLOPE TO MATCH EXISTING GROUND

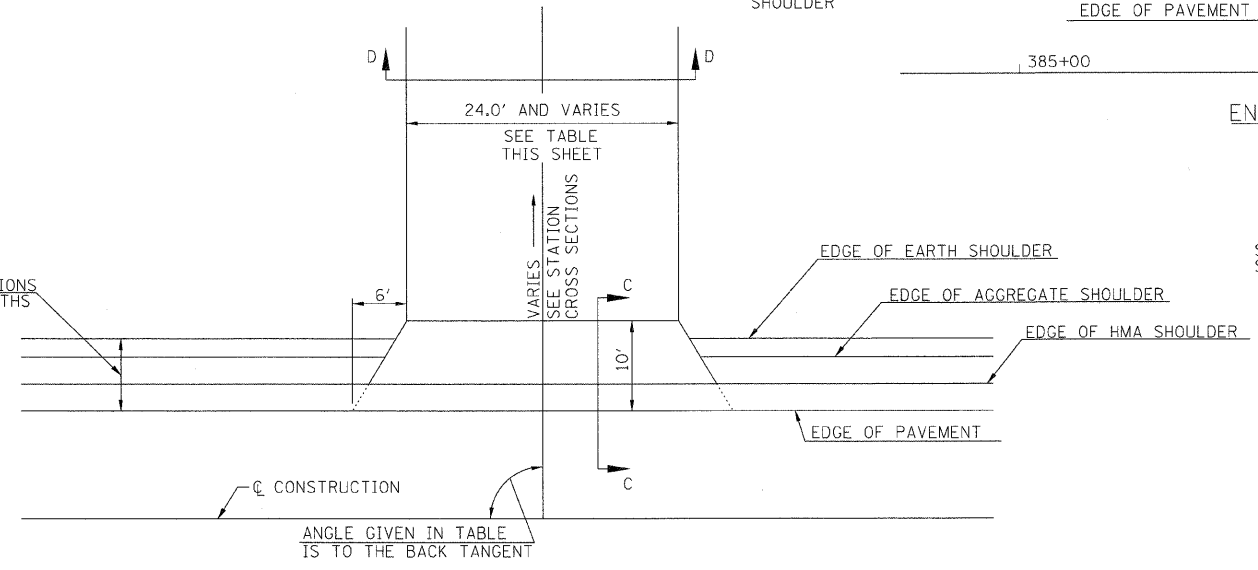


SECTION A-A

• 4% UNLESS OTHERWISE NOTED ON STATION CROSS SECTIONS

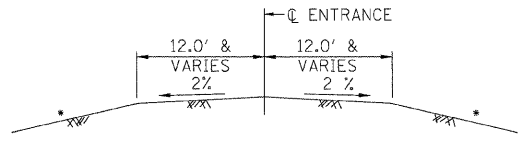


ENTRANCE DETAIL STA. 385+50.00 LT.



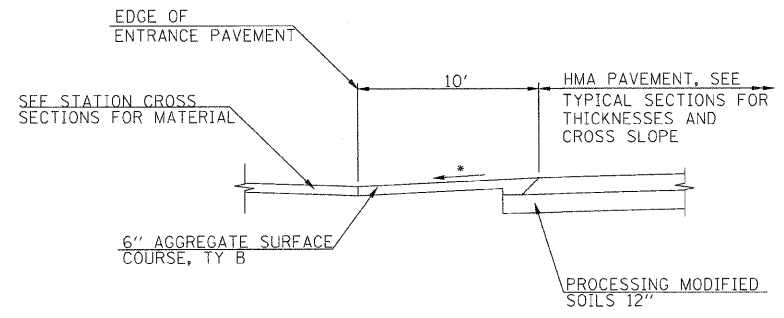
SECTION C-C FOR FIELD ENTRANCES ALONG C.H. 18

• 4% UNLESS OTHERWISE NOTED ON STATION CROSS SECTIONS



SECTION D-D

• 6:1 MIN. SLOPE TO MATCH EXISTING GROUND



SECTION C-C FOR FIELD ENTRANCES ALONG 980E AND C.H. 28

• 4% UNLESS OTHERWISE NOTED ON STATION CROSS SECTIONS

PRIVATE AND FIELD ENTRANCES				
LOCATION	ANGLE	WIDTH	COMMENT	P.E. / F.E.
289+58.18, LT	90°	48'		F.E.
290+43.07, RT	90°	48'		F.E.
315+00.00, LT	90°	24'		F.E.
316+43.35, LT	90°	24'	OPPOSITE 980E	F.E.
8+00.00, LT	90°	24'	ALONG 980E	F.E.
321+33.88, RT	90°	24'		F.E.
322+90.38, RT	89°	14'		P.E.
329+30.24, RT	90°	24'	OPPOSITE 1000E	F.E.
336+47.65, LT	90°	24'		F.E.
336+47.65, RT	90°	24'		F.E.
342+26.99, LT	90°	24'		F.E.
344+00.00, LT	90°	24'		F.E.
344+00.00, RT	90°	24'		F.E.
352+00.00, LT	90°	24'		F.E.
352+75.47, LT	83.9°	12'		P.E.
354+38.50, LT	93.9°	12'		P.E.
356+25.00, RT	90°	24'		F.E.
365+00.00, LT	90°	24'		F.E.
365+00.00, RT	90°	24'		F.E.
369+31.18, RT	86.9°	24'	1075E	F.E.
373+00.00, LT	90°	24'		F.E.
373+00.00, RT	90°	24'		F.E.
385+50.00, LT	90°	24'	SEE DETAIL THIS SHEET	F.E.
86+86.93, RT	82.9°	24'	ALONG C.H. 28	F.E.

REVISIONS	
NAME	DATE

ILLINOIS DEPARTMENT OF TRANSPORTATION
 ENTRANCE DETAILS
 FAS 642
 SEC NO. 99-00124-03-PV
 COLES COUNTY, ILLINOIS
 SCALE: NOT TO SCALE
 DATE 03/30/2009
 DRAWN BY SKM
 CHECKED BY DJP

© Copyright Hanson Professional Services Inc. 2009
HANSON
 03/30/2009
 LAYOUT: DJP/SKM/03/28/03
 DRAWN: DJP
 REVIEWED: SKM
 1:57 jobs 51 52028000/MS/Sheet/517_035en1.dgn