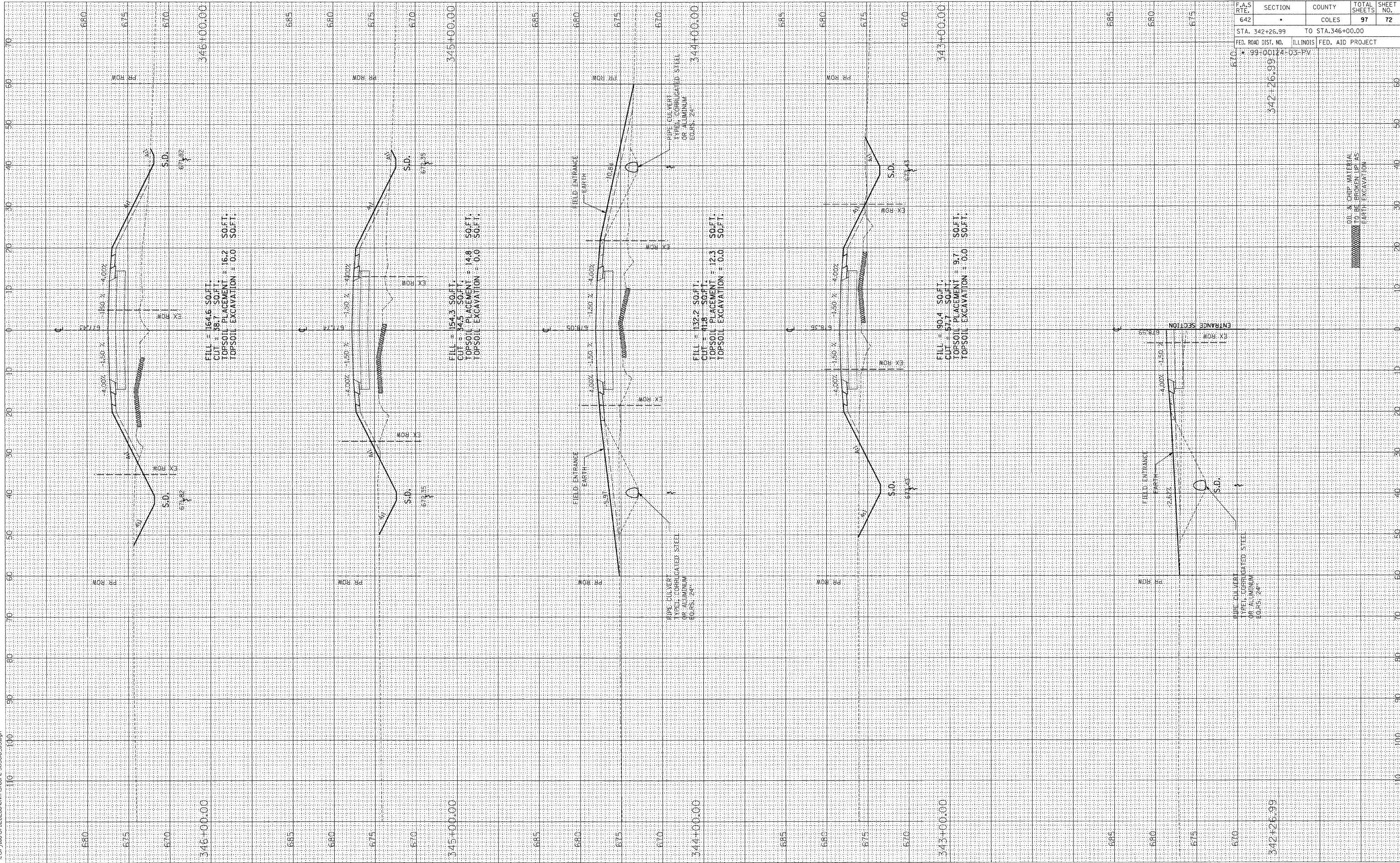


FINAL SURVEY	BY	DATE
SURVEYED		
PLOTTED		
NOTE BOOK		
AREAS CHECKED		
NO.		



ORIGINAL SURVEY	BY	DATE
SURVEYED		
PLOTTED		
NOTE BOOK		
AREAS CHECKED		
NO.		

03/27/2009
 I:\97 Jobs\952028b\Ch\Sheet\c-303a08.dwg



F.A.S. RTE.	SECTION	COUNTY	TOTAL SHEETS	SHEET NO.
642	*	COLES	97	72
STA. 342+26.99		TO STA. 346+00.00		
FED. ROAD DIST. NO. * 99-00124-03-PV		ILLINOIS FED. AID PROJECT		