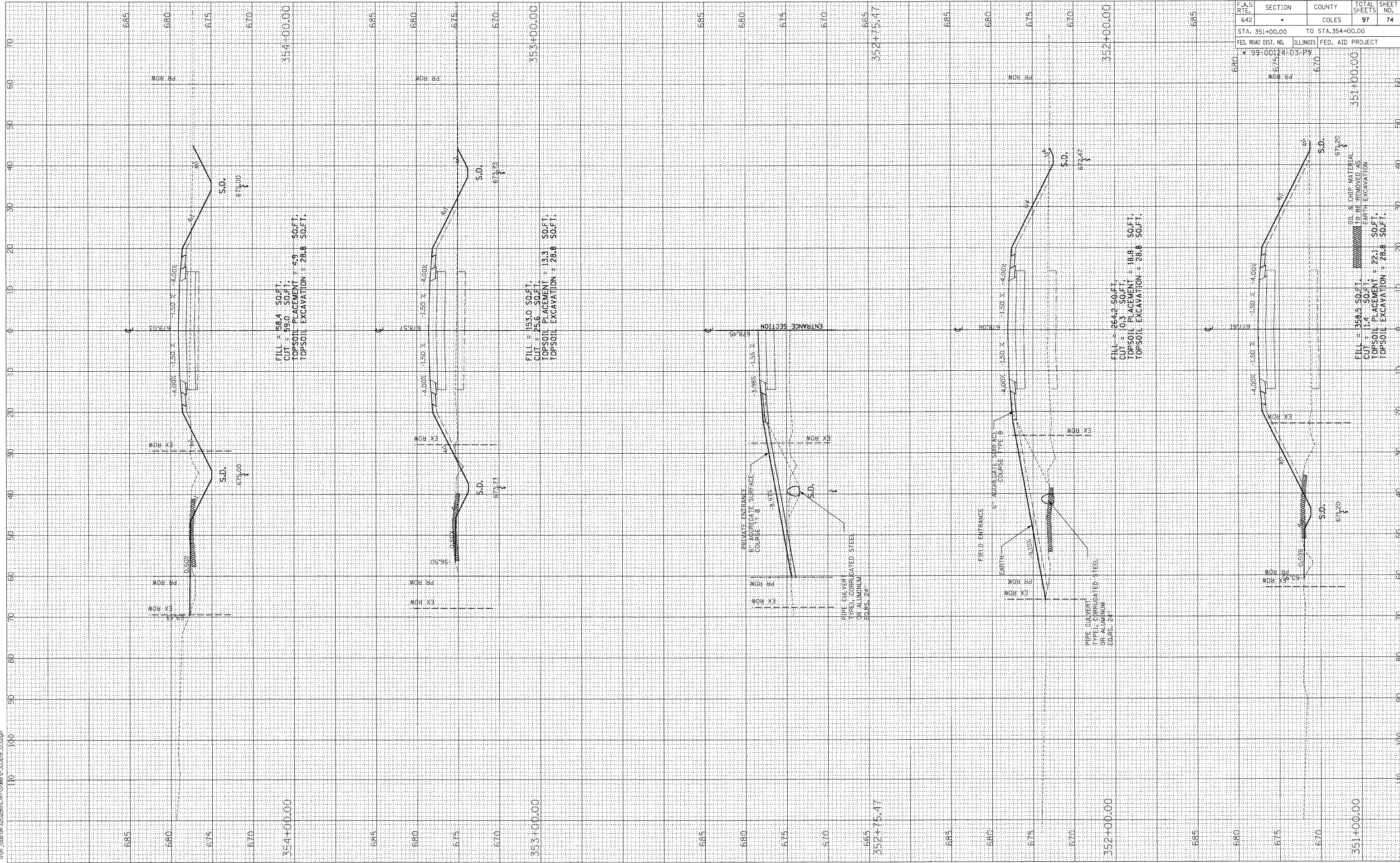


FINAL SURVEY	DATE
SURVEYED	BY
PLOTTED	
FORMAL DATE	
NOTE BOOK	
AREAS CHECKED	
NO.	



ORIGINAL SURVEY	DATE
SURVEYED	BY
PLOTTED	
FORMAL DATE	
NOTE BOOK	
AREAS CHECKED	
NO.	

03/21/2009  
19770059720209/CIV/SHEP-C-30368\_03.dgn



F.A.S. RTE.	SECTION	COUNTY	TOTAL SHEETS	SHEET NO.
642	*	COLES	97	74
STA. 351+00.00		TO STA. 354+00.00		
FED. ROAD DIST. NO.		ILLINOIS FED. AID PROJECT		
* 99-00124-03-P				